

## Bus system flat-type plug - SACC-DSIV-M12FSD-4CON-L90 - 1534630

Please be informed that the data shown in this PDF Document is generated from our Online Catalog. Please find the complete data in the user's documentation. Our General Terms of Use for Downloads are valid (<http://download.phoenixcontact.com>)



Bus system flush-type socket, ETHERNET, 4-pos., M12, shielded, D-coded, rear/screw mounting, with angled solder connection



### Key commercial data

Packing unit	1 pc
Minimum order quantity	10 pc
Weight per Piece (excluding packing)	144.6 GRM
Custom tariff number	85366990
Country of origin	Germany

### Technical data

#### Mechanical characteristics

Standards/specifications	M12 connector IEC 61076-2-101
Number of positions	4
Shielded	No
Connection method	Solder pins

#### Ambient conditions

Ambient temperature (operation)	-25 °C ... 85 °C
Degree of protection	IP67

#### Material data

Inflammability class according to UL 94	HB
Contact carrier material	PA 66
Contact material	CuZn
Contact surface material	Ni/Au
Cable gland material	Zinc die-cast, nickel-plated
Sealing material	NBR

## Bus system flat-type plug - SACC-DSIV-M12FSD-4CON-L90 - 1534630

### Technical data

#### Electrical characteristics

Number of positions	4
Nominal voltage $U_N$	250 V
Nominal current $I_N$	4 A
Surge voltage category	II
Pollution degree	3

### Classifications

#### eCl@ss

eCl@ss 4.0	27140815
eCl@ss 4.1	27140815
eCl@ss 5.0	27143423
eCl@ss 5.1	27143423
eCl@ss 6.0	27143423
eCl@ss 7.0	27449001
eCl@ss 8.0	27449001

#### ETIM

ETIM 2.0	EC001297
ETIM 3.0	EC002061
ETIM 4.0	EC002061
ETIM 5.0	EC002061

#### UNSPSC

UNSPSC 6.01	31251501
UNSPSC 7.0901	31251501
UNSPSC 11	31251501
UNSPSC 12.01	31251501
UNSPSC 13.2	31251501

### Approvals

#### Approvals

---

Approvals

GOST

---

# Bus system flat-type plug - SACC-DSIV-M12FSD-4CON-L90 - 1534630

## Approvals

Ex Approvals

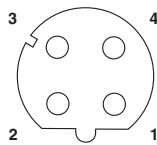
Approvals submitted

## Approval details



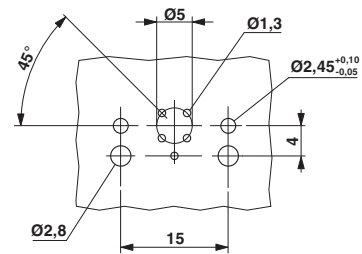
## Drawings

Schematic diagram



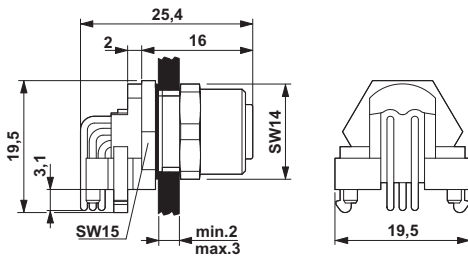
Pin assignment M12 socket, 4-pos., D-coded, female side

Drilling diagram



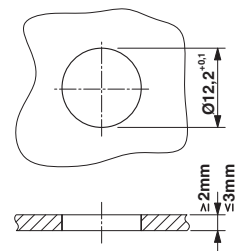
M12 flush-type connector

Dimensioned drawing



M12 flush-type connector

Dimensioned drawing



Panel cutout