

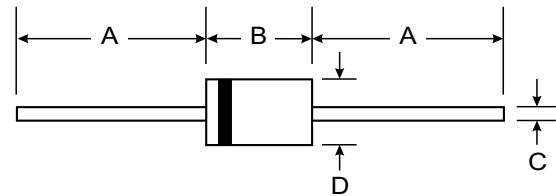
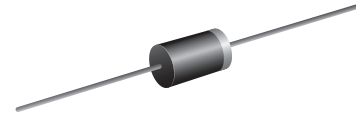
**VOLTAGE RANGE: 30- 100V**  
**CURRENT: 12 A**

### Features

- Metal of silicon rectifier , majority carrier conduction
- Guard ring for transient protection
- Low power loss,high efficiency
- High current capability,low VF
- High surge capacity

### Mechanical Data

- Case: DO-201AD, Molded Plastic
- Terminals: Plated Leads Solderable per MIL-STD-202, Method 208
- Polarity: Cathode Band
- Weight: 1.2 grams (approx.)
- Mounting Position: Any
- Marking: Type Number



DO-201AD		
Dim	Min	Max
A	25.40	—
B	7.20	9.50
C	1.20	1.30
D	4.80	5.30
All Dimensions in mm		

### Maximum Ratings and Electrical Characteristics $T_A = 25^\circ\text{C}$ unless otherwise specified

Single phase, half wave, 60Hz, resistive or inductive load. For capacitive load, derate current by 20%.

Characteristic	Symbol	12SQ030	12SQ035	12SQ040	12SQ045	12SQ050	12SQ060	12SQ080	12SQ100	Unit	
Maximum Recurrent Peak Reverse Voltage	V <sub>RRM</sub>	30	35	40	45	50	60	80	100	V	
Maximum RMS Voltage	V <sub>RMS</sub>	21	24.5	28	31.5	35	42	56	70	V	
Maximum DC Blocking Voltage	V <sub>DC</sub>	30	35	40	45	50	60	80	100	V	
Maximum Average Forward Rectified Current @T <sub>c</sub> =95 °C	I <sub>(AV)</sub>	12								A	
Peak Forward Surge Current 8.3ms single half sine-wave super imposed on rated load(JEDEC Method)	I <sub>FSM</sub>	275								A	
Peak Forward Voltage at 12A DC(Note1)	V <sub>F</sub>	0.55			0.7		0.8			V	
Maximum DC Reverse Current @T <sub>j</sub> =25°C at Rated DC Blocking Voltage @T <sub>j</sub> =100°C	I <sub>R</sub>	0.5				50					mA
Typical Junction Capacitance (Note2)	C <sub>J</sub>	450									pF
Typical Thermal Resistance (Note3)	R <sub>JC</sub>	3.0									°C/w
Operating Temperature Range	T <sub>J</sub>	-55 to+200								°C	
Storage Temperature Range	T <sub>STG</sub>	-55 to+200								°C	

NOTES:1.300us Pulse Width, 2%Duty Cycle.

2.Measured at 1.0 MHZ and applied reverse voltage of 4.0VDC.

3.Thermal Resistance Junction to case.

FIG.1-FORWARD CURRENT DERATING CURVE

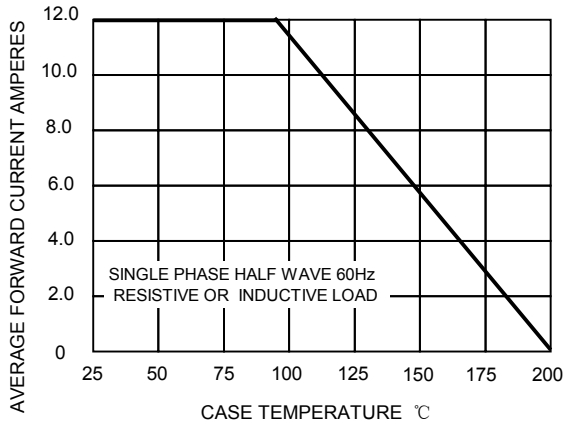


FIG.2-MAXIMUM NON-REPETITIVE SURGE

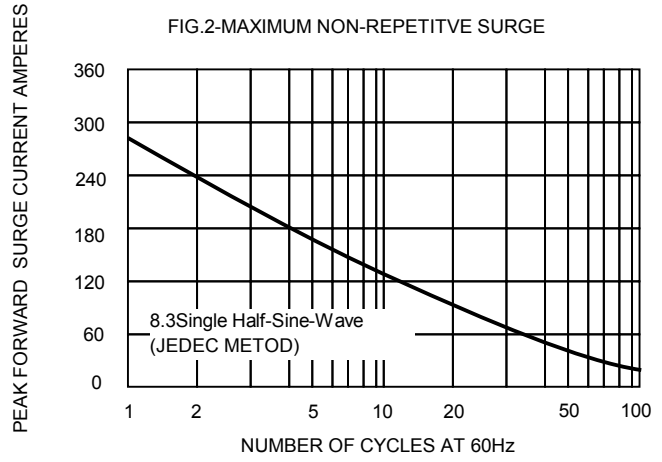


FIG.3-TYPICAL REVER CHARACTERISTICS

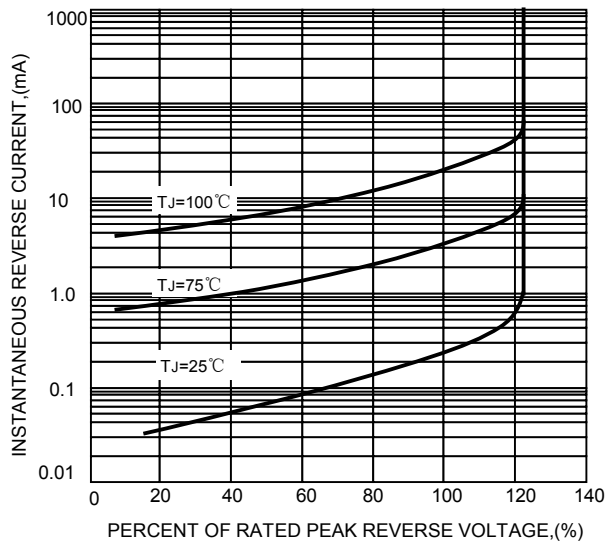


FIG.4-TYPICAL FORWARD CHARACTERISTICS

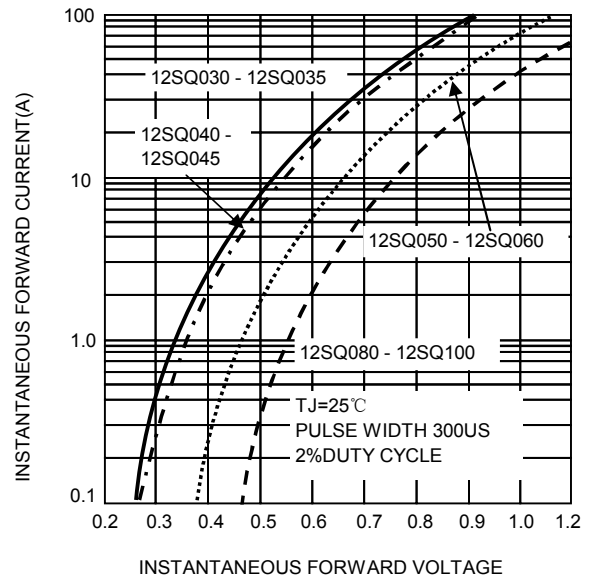


FIG.5-TYPICAL JUNCTION CAPACITANCE

