

VOLTAGE RANGE: 50 - 1000V

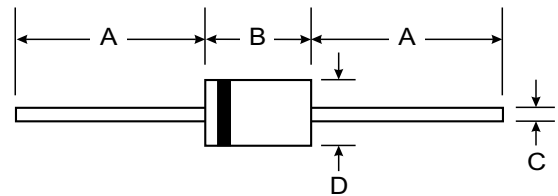
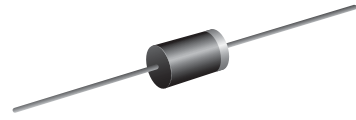
CURRENT: 3.0 A

Features

- Low Reverse Recovery Time (T_{rr})
- Low Reverse Current
- Low Forward Voltage Drop
- High Current Capability
- Plastic Material - UL Recognition 94V-0

Mechanical Data

- Case: DO-201AD, Molded Plastic
- Terminals: Axial Leads, Solderable per MIL-STD-202 Method 208
- Polarity: Color Band Denotes Cathode
- Approx. Weight: 1.1 grams
- Mounting Position: Any



DO-201AD		
Dim	Min	Max
A	25.40	—
B	7.20	9.50
C	1.20	1.30
D	4.80	5.30
All Dimensions in mm		

Maximum Ratings and Electrical Characteristics $T_A = 25^\circ\text{C}$ unless otherwise specified

Single phase, half wave, 60Hz, resistive or inductive load. For capacitive load, derate current by 20%.

Characteristic	Symbol	FR301	FR302	FR303	FR304	FR305	FR306	FR307	Unit
Maximum Recurrent Peak Reverse Voltage	V_{RRM}	50	100	200	400	600	800	1000	V
Maximum RMS Voltage	V_{RMS}	35	70	140	280	420	560	700	V
Maximum DC Blocking voltage	V_{DC}	50	100	200	400	600	800	1000	V
Maximum Average Forward Rectified Current (9.5mm) Lead Length @ $T_A=75^\circ\text{C}$	$I_{(AV)}$	3.0							A
Peak Forward Surge Current 8.3 ms single half sine-wave superimposed on rated load (JEDEC method)	I_{FSM}	150							A
Maximum Instantaneous Forward Voltage at 3.0A DC	V_F	1.3							V
Maximum DC Reverse Current	I_R	10							μA
Maximum Reverse Recovery Time (Note 1)	T_{rr}	150				250	500		ns
Typical Junction Capacitance (Note 2)	C_J	70				50			pF
Operating and Storage Temperature Range	T_J, T_{STG}	-65 to +175							$^\circ\text{C}$

Notes: 1. Reverse Recovery Test Conditions: $I_F = 0.5 \text{ A}$, $I_R = 1.0 \text{ A}$, $I_{RR} = 0.25 \text{ A}$
 2. Measured at 1 MHz and applied reverse voltage of 4.0 volts.

