

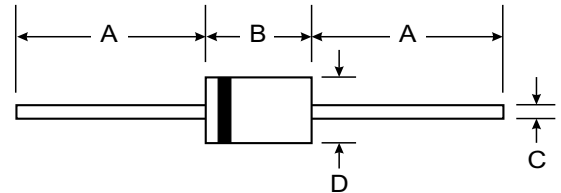
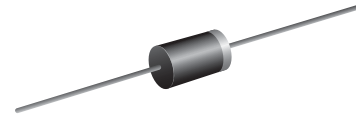
VOLTAGE RANGE: 150 - 200V
CURRENT: 5.0 A

Features

- Schottky Barrier Chip
- Ideally Suited for Automatic Assembly
- Low Power Loss, High Efficiency
- For Use in Low Voltage Application
- Guard Ring Die Construction
- Plastic Case Material has UL Flammability Classification Rating 94V-O

Mechanical Data

- Case: DO-201AD, Molded Plastic
- Terminals: Plated Leads Solderable per MIL-STD-202, Method 208
- Polarity: Cathode Band
- Weight: 1.2 grams (approx.)
- Mounting Position: Any
- Marking: Type Number



DO-201AD		
Dim	Min	Max
A	25.40	—
B	7.20	9.50
C	1.20	1.30
D	4.80	5.30
All Dimensions in mm		

Maximum Ratings and Electrical Characteristics T_A = 25°C unless otherwise specified

Single phase, half wave, 60Hz, resistive or inductive load. For capacitive load, derate current by 20%.

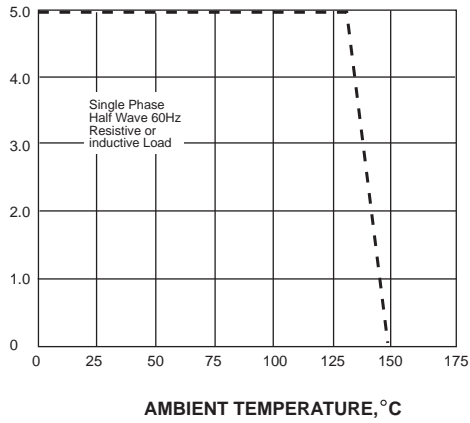
Characteristic	Symbol	SB5150	SB5200	Unit
Maximum repetitive peak reverse voltage	V _{RRM}	150	200	Volts
Maximum RMS voltage	V _{RMS}	105	150	Volts
Maximum DC blocking voltage	V _{DC}	150	200	Volts
Maximum average forward rectified current at T _L (see fig.1)	I _(AV)	5.0		Amps
Peak forward surge current 8.3ms single half sine-wave superimposed on rated load (JEDEC Method)	I _{FSM}	150.0		Amps
Maximum instantaneous forward voltage at 5.0A	V _F	0.85	0.95	Volts
Maximum DC reverse current at rated DC blocking voltage	I _R	0.2		mA
<small>T_A=25°C</small> <small>T_A=100°C</small>		2.0		
Typical junction capacitance (NOTE 1)	C _J	200		pF
Typical thermal resistance (NOTE 2)	R _{θJA}	50.0		°C/W
Operating junction temperature range	T _J	-50 to +150		°C
Storage temperature range	T _{STG}	-50 to +150		°C

Note: 1. Measured at 1MHz and applied reverse voltage of 4.0V D.C.
 2. P.C.B. mounted with 0.2x0.2" (5.0x5.0mm) copper pad areas

RATINGS AND CHARACTERISTIC CURVES SB5150 THRU SB5200

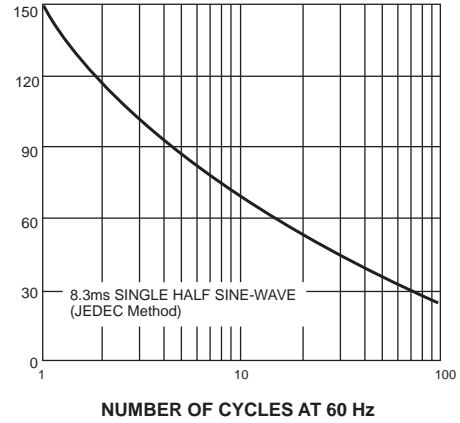
AVERAGE FORWARD RECTIFIED CURRENT,
AMPERES

FIG. 1- FORWARD CURRENT DERATING CURVE



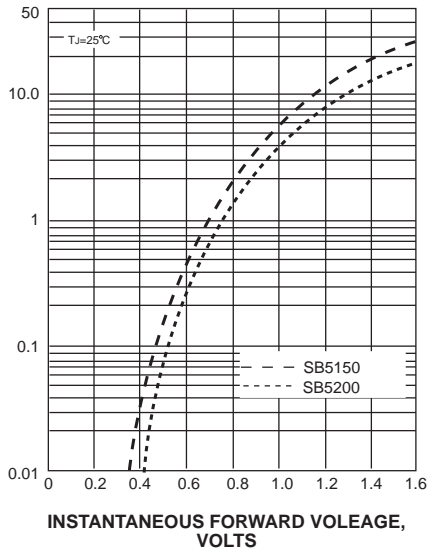
PEAK FORWARD SURGE CURRENT,
AMPERES

FIG. 2-MAXIMUM NON-REPETITIVE PEAK FORWARD SURGE CURRENT



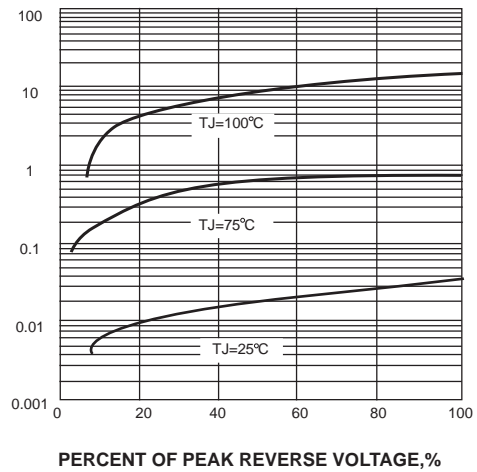
INSTANTANEOUS FORWARD CURRENT, AMPERES

FIG. 3-TYPICAL INSTANTANEOUS FORWARD CHARACTERISTICS



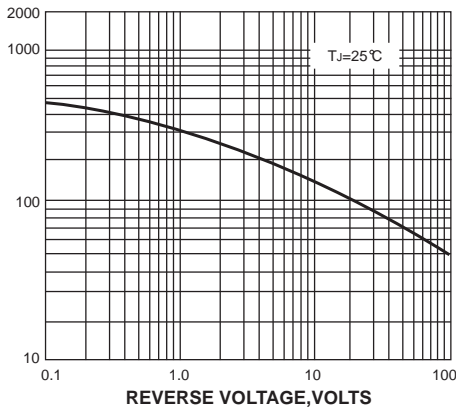
INSTANTANEOUS REVERSE CURRENT,
MILLIAMPERES

FIG. 4-TYPICAL REVERSE CHARACTERISTICS



JUNCTION CAPACITANCE, pF

FIG. 5-TYPICAL JUNCTION CAPACITANCE



TRANSIENT THERMAL IMPEDANCE,
°C/W

FIG. 6-TYPICAL TRANSIENT THERMAL IMPEDANCE

