

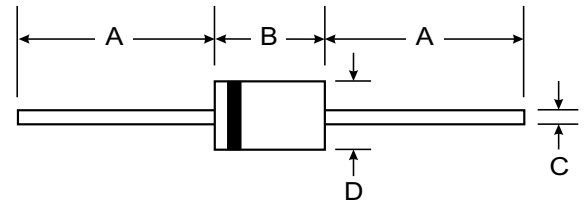
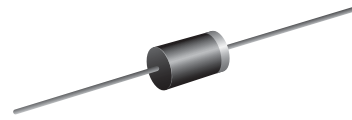
**VOLTAGE RANGE: 400 - 600V**  
**CURRENT: 1.5 A**

### Features

- High current capability
- High surge current capability
- High reliability
- Low reverse current
- Low forward voltage drop
- Fast switching for high efficiency

### Mechanical Data

- Case : DO-15 Molded plastic
- Epoxy : UL94V-O rate flame retardant
- Lead : Axial lead solderable per MIL-STD-202, Method 208 guaranteed
- Polarity : Color band denotes cathode end
- Mounting position : Any
- Weight : 0.465 gram



| DO-15                |       |       |
|----------------------|-------|-------|
| Dim                  | Min   | Max   |
| A                    | 25.40 | —     |
| B                    | 5.50  | 7.62  |
| C                    | 0.686 | 0.889 |
| D                    | 2.60  | 3.60  |
| All Dimensions in mm |       |       |

### Maximum Ratings and Electrical Characteristics T<sub>A</sub> = 25°C unless otherwise specified

| RATING  | SYMBOL             | RU3M          | RU3AM | UNIT |
|---|--------------------|---------------|-------|------|
| Maximum Repetitive Peak Reverse Voltage   | V <sub>RRM</sub>   | 400           | 600   | V    |
| Maximum RMS Voltage   | V <sub>RMS</sub>   | 280           | 420   | V    |
| Maximum DC Blocking Voltage   | V <sub>DC</sub>    | 400           | 600   | V    |
| Maximum Average Forward Current <small>T<sub>a</sub> = 55 °C</small>  | I <sub>F(AV)</sub> | 1.5           |       | A    |
| Maximum Peak Forward Surge Current<br>( 50 Hz, Half-cycle , Sine wave, Single Shot )  | I <sub>FSM</sub>   | 30            |       | A    |
| Maximum Forward Voltage at I <sub>F</sub> = 1.5 A   | V <sub>F</sub>     | 1.1           |       | V    |
| Maximum DC Reverse Current <small>T<sub>a</sub> = 25 °C</small><br>at Rated DC Blocking Voltage <small>T<sub>a</sub> = 100 °C</small> | I <sub>R</sub>     | 10            |       | μA   |
|   | I <sub>R(H)</sub>  | 350           |       | μA   |
| Maximum Reverse Recovery Time ( Note 1 )  | T <sub>rr</sub>    | 0.4           |       | μs   |
| Junction Temperature Range  | T <sub>J</sub>     | - 40 to + 150 |       | °C   |
| Storage Temperature Range   | T <sub>STG</sub>   | - 40 to + 150 |       | °C   |

### Notes :

( 1 ) Reverse Recovery Test Conditions : I<sub>F</sub> = 10 mA, I<sub>RP</sub> = 10 mA.

## RATING AND CHARACTERISTIC CURVES ( RU3M - RU3AM )

FIG.1 - REVERSE RECOVERY TIME CHARACTERISTIC AND TEST CIRCUIT DIAGRAM

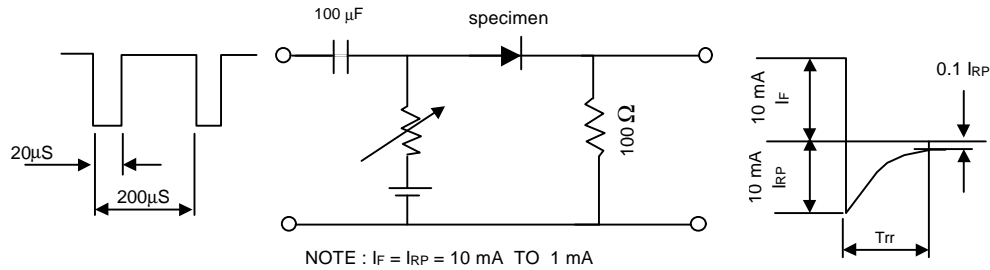


FIG.2 - DERATING CURVE FOR OUTPUT RECTIFIED CURRENT

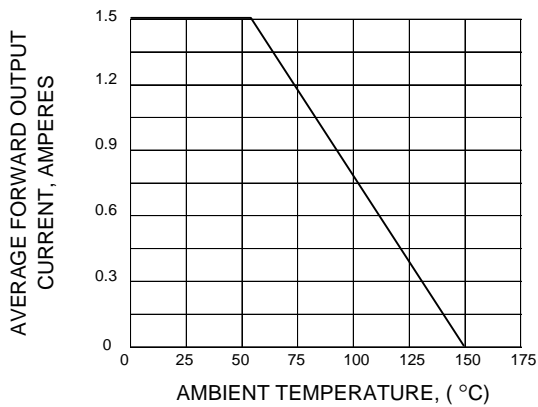


FIG.3 - MAXIMUM NON-REPETITIVE PEAK FORWARD SURGE CURRENT

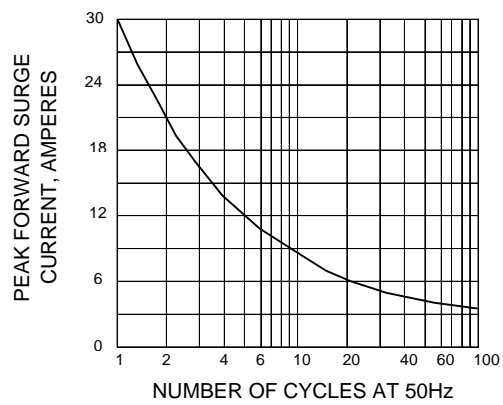


FIG.4 - TYPICAL FORWARD CHARACTERISTICS

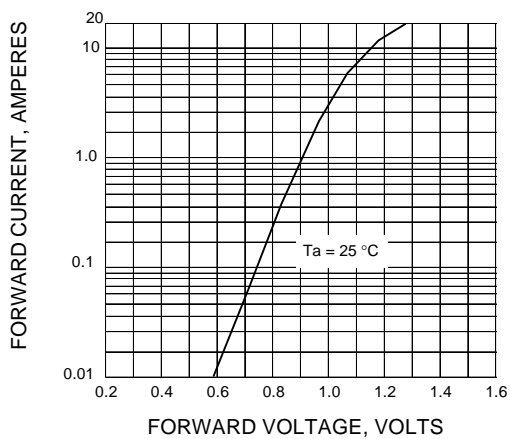


FIG.5 - TYPICAL REVERSE CHARACTERISTICS

