

Features

- 4 ~ 6.3 ϕ , 105°C, 1,000 hours assured
- Vertical chip type miniaturized for 5.5mm high capacitor
- Designed for surface mounting on high density PC board
- RoHS Compliance

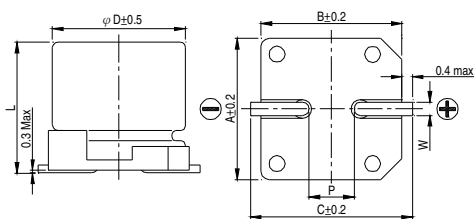


Marking color: Black

SPECIFICATIONS

Items	Performance																							
Category Temperature Range	-55°C ~ +105°C																							
Capacitance Tolerance	±20% (at 120Hz, 20°C)																							
Leakage Current (at 20°C)	I = 0.01CV or 3 (μA) whichever is greater (after 2 minutes) Where, C = rated capacitance in μF V = rated DC working voltage in V																							
Dissipation Factor (Tan δ at 120Hz, 20°C)	<table border="1"> <thead> <tr> <th>Rated Voltage</th> <th>6.3</th> <th>10</th> <th>16</th> <th>25</th> <th>35</th> <th>50</th> </tr> </thead> <tbody> <tr> <td>Tan δ (max)</td> <td>0.30</td> <td>0.26</td> <td>0.22</td> <td>0.16</td> <td>0.13</td> <td>0.12</td> </tr> </tbody> </table>	Rated Voltage	6.3	10	16	25	35	50	Tan δ (max)	0.30	0.26	0.22	0.16	0.13	0.12									
Rated Voltage	6.3	10	16	25	35	50																		
Tan δ (max)	0.30	0.26	0.22	0.16	0.13	0.12																		
Low Temperature Characteristics (at 120Hz)	<p>Impedance ratio shall not exceed the values given in the table below.</p> <table border="1"> <thead> <tr> <th colspan="2">Rated Voltage</th> <th>6.3</th> <th>10</th> <th>16</th> <th>25</th> <th>35</th> <th>50</th> </tr> </thead> <tbody> <tr> <td rowspan="2">Impedance Ratio</td> <td>Z(-25°C)/Z(+20°C)</td> <td>4</td> <td>3</td> <td>2</td> <td>2</td> <td>2</td> <td>2</td> </tr> <tr> <td>Z(-55°C)/Z(+20°C)</td> <td>8</td> <td>5</td> <td>4</td> <td>3</td> <td>3</td> <td>3</td> </tr> </tbody> </table>	Rated Voltage		6.3	10	16	25	35	50	Impedance Ratio	Z(-25°C)/Z(+20°C)	4	3	2	2	2	2	Z(-55°C)/Z(+20°C)	8	5	4	3	3	3
Rated Voltage		6.3	10	16	25	35	50																	
Impedance Ratio	Z(-25°C)/Z(+20°C)	4	3	2	2	2	2																	
	Z(-55°C)/Z(+20°C)	8	5	4	3	3	3																	
Endurance	<table border="1"> <thead> <tr> <th>Test Time</th> <th>1,000 Hrs</th> </tr> </thead> <tbody> <tr> <td>Capacitance Change</td> <td>Within ±20% of initial value</td> </tr> <tr> <td>Dissipation Factor</td> <td>Less than 200% of specified value</td> </tr> <tr> <td>Leakage Current</td> <td>Within specified value</td> </tr> </tbody> </table> <p>* The above specifications shall be satisfied when the capacitors are restored to 20°C after the rated voltage applied for 1,000 hours at 105°C.</p>	Test Time	1,000 Hrs	Capacitance Change	Within ±20% of initial value	Dissipation Factor	Less than 200% of specified value	Leakage Current	Within specified value															
Test Time	1,000 Hrs																							
Capacitance Change	Within ±20% of initial value																							
Dissipation Factor	Less than 200% of specified value																							
Leakage Current	Within specified value																							
Shelf Life Test	<table border="1"> <thead> <tr> <th>Test Time</th> <th>1,000 Hrs</th> </tr> </thead> <tbody> <tr> <td>Capacitance Change</td> <td>Within ±20% of initial value</td> </tr> <tr> <td>Dissipation Factor</td> <td>Less than 200% of specified value</td> </tr> <tr> <td>Leakage Current</td> <td>Within specified value</td> </tr> </tbody> </table> <p>* The above specifications shall be satisfied when the capacitors are restored to 20°C after exposing them for 1,000 hours at 105°C without voltage applied.</p>	Test Time	1,000 Hrs	Capacitance Change	Within ±20% of initial value	Dissipation Factor	Less than 200% of specified value	Leakage Current	Within specified value															
Test Time	1,000 Hrs																							
Capacitance Change	Within ±20% of initial value																							
Dissipation Factor	Less than 200% of specified value																							
Leakage Current	Within specified value																							
Ripple Current & Frequency Multipliers	<table border="1"> <thead> <tr> <th>Frequency (Hz)</th> <th>50</th> <th>120</th> <th>1k</th> <th>10k up</th> </tr> </thead> <tbody> <tr> <td>Multiplier</td> <td>0.7</td> <td>1.0</td> <td>1.3</td> <td>1.4</td> </tr> </tbody> </table>	Frequency (Hz)	50	120	1k	10k up	Multiplier	0.7	1.0	1.3	1.4													
Frequency (Hz)	50	120	1k	10k up																				
Multiplier	0.7	1.0	1.3	1.4																				

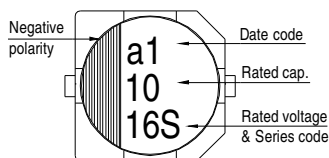
DIAGRAM OF DIMENSIONS



LEAD SPACING AND DIAMETER Unit: mm

φD	L	A	B	C	W	P ± 0.2
4	5.3 ± 0.2	4.3	4.3	5.1	0.5 ~ 0.8	1.0
5	5.3 ± 0.2	5.3	5.3	6.1	0.5 ~ 0.8	1.5
6.3	5.3 ± 0.2	6.6	6.6	7.4	0.5 ~ 0.8	2.0

MARKING



DIMENSION & PERMISSIBLE RIPPLE CURRENT

Dimension: $\phi D \times L$ (mm)
Ripple Current: mA/rms at 120 Hz, 105°C

V. DC		6.3V (0J)		10V (1A)		16V (1C)		25V (1E)		35V (1V)		50V (1H)	
μF	Contents	$\phi D \times L$	mA	$\phi D \times L$	mA	$\phi D \times L$	mA	$\phi D \times L$	mA	$\phi D \times L$	mA	$\phi D \times L$	mA
0.1	0R1											4x5.3	2
0.22	R22											4x5.3	3
0.33	R33											4x5.3	4
0.47	R47											4x5.3	5
1	010											4x5.3	7
2.2	2R2											4x5.3	10
3.3	3R3											4x5.3	12
4.7	4R7							4x5.3	12	4x5.3	14	5x5.3	17
10	100			4x5.3	15	4x5.3	16	5x5.3	21	5x5.3	23	6.3x5.3	26
22	220	4x5.3	21	5x5.3	25	5x5.3	28	6.3x5.3	36	6.3x5.3	50	6.3x5.3	51
33	330	5x5.3	30	5x5.3	31	6.3x5.3	40	6.3x5.3	44				
47	470	5x5.3	36	6.3x5.3	43	6.3x5.3	47	6.3x5.3	60				
100	101	6.3x5.3	61	6.3x5.3	65	6.3x5.3	70						