

# multimec®

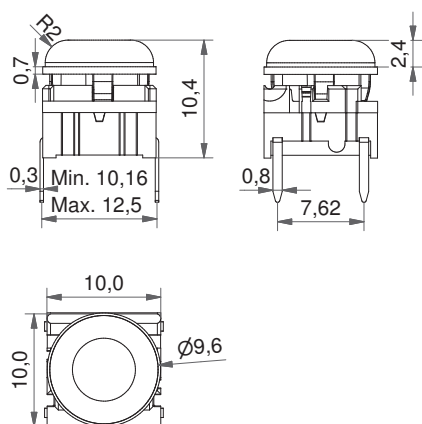
## 5G + 1JS

### Technical Data:

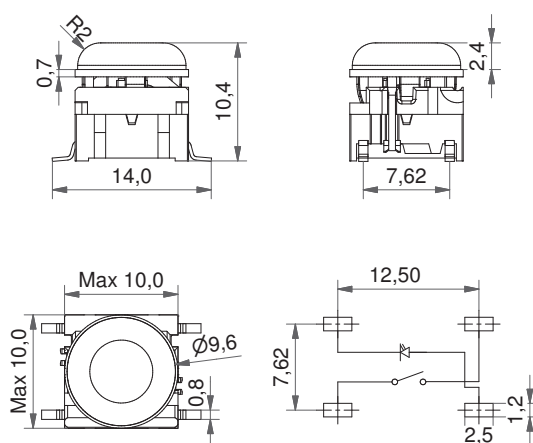
- through-hole or SMD
- 50mA/24VDC
- single pole/momentary
- 10.000.000 operations lifetime
- IP67 sealing
- temperature range:  
LED: -30/+85°C  
solid cap: +65°C  
transparent: +85°C
- actuation force: 2.0, 3.5, 6.5 N



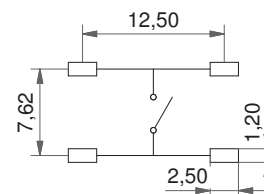
### Dimensions (through-hole)



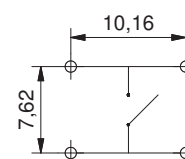
### Dimensions (SMD w/LED)



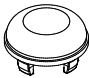
### PCB Layout SMD

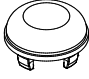


### PCB Layout TH



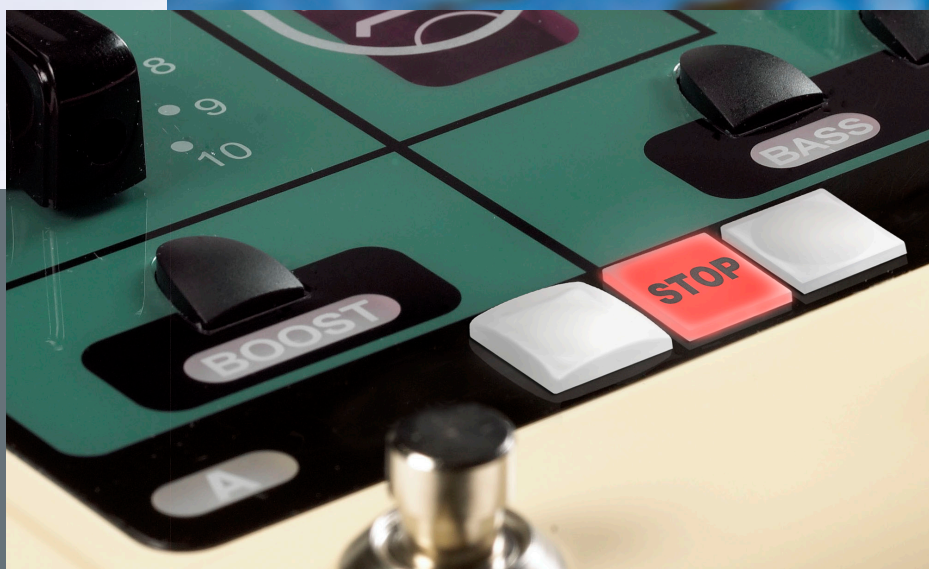
### HOW TO ORDER

<b>5 G</b>	<input type="checkbox"/>	<input type="checkbox"/>	<input type="checkbox"/>	+	<b>1 J S</b>	<input type="checkbox"/>
<b>Switch</b>	<b>Mounting</b>	<b>Actuation force</b>	<b>LED</b>		<b>Cap</b>	<b>Colour code</b>
	<b>TH9</b> through-hole	<b>20</b>	<b>01</b> blue		<b>1JS</b> transparent	<b>11</b> transparent
	<b>SH9</b> surface mount	<b>35</b>	<b>22</b> green			<b>16</b> frosted white
		<b>65</b>	<b>42</b> yellow			
			<b>61</b> white			
			<b>82</b> red			
			<b>2242</b> green/yellow			
			<b>8222</b> red/green			

<b>5 G</b>	<input type="checkbox"/>	<input type="checkbox"/>	+	<b>1 J S</b>	<input type="checkbox"/>
<b>Switch</b>	<b>Mounting</b>	<b>Actuation force</b>		<b>Cap</b>	<b>Colour code</b>
	<b>TH9</b> through-hole	<b>20</b>		<b>1JS</b> solid colour	<b>00</b> blue
	<b>SH9</b> surface mount	<b>35</b>			<b>02</b> green
		<b>65</b>			<b>03</b> grey
					<b>04</b> yellow
					<b>06</b> white
					<b>08</b> red
					<b>09</b> black



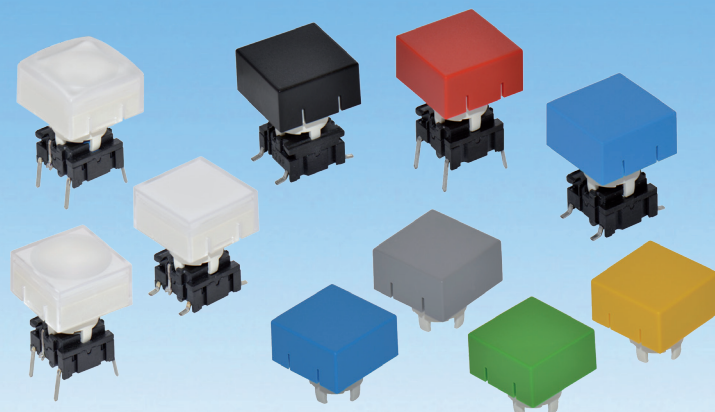
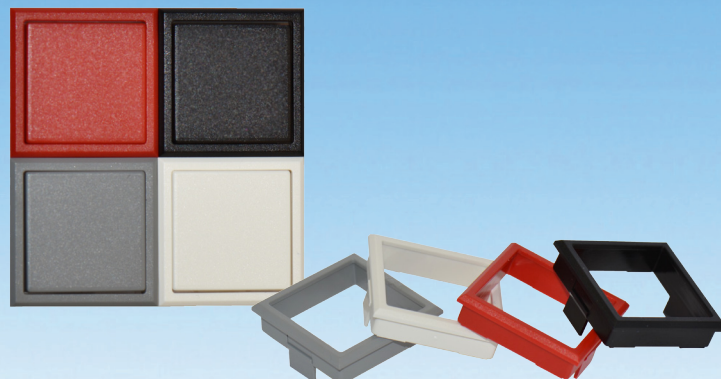
# 1KS/KBS/KCS



The 1KS series is square caps with measurements of 14.3 x 14.3 mm and can be used with the 2K bezel, which snaps into the front panel, or alone without the bezel.

The 1KS is with a flat top, the 1KBS with a convex top and 1KCS with a concave top. All three versions are designed for illumination with a nice distribution of the illumination to the whole cap surface. The caps also offer the designer the option of using interchangeable legends or standard printed graphics. A legend can be printed on the top lid surface or a foil with the legend is placed between the transparent lid and the lens.

When used with the 2SS variable height extender, the 1KS/1KBS/1KCS caps can be to any required operating height between 24.1-29.1mm.



Distributor:



**mec**  
switches

**1PS / 1QS / 1RS**



The new caps for the Multimec switches 1PS / 1QS / 1RS is optimized with a “snap on” system to ensure the cap to stay on the switch actuator even under heavy vibrations or similar scenarios.

- The 1PS cap is a solid cap which can be supplied in different colours
- The 1QS cap is a solid cap like 1PS, but with a rectangular lens for intensive or smooth illumination
- The 1RS cap is a solid cap like 1PS, but with a round lens for intensive or smooth illumination



Distributor:

# multimec®

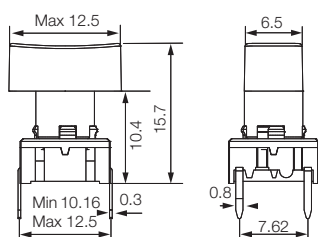
## 5E/5G + 1PS/1QS/1RS

### Technical Data

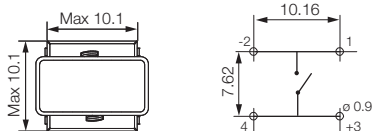
- through-hole or SMD
- 50mA/24VDC
- single pole/momentary
- 10.000.000 operations life time
- IP67 sealing
- temperature range:  
 LED: -40/+85°C  
 solid cap +65°C  
 transparent +85°C
- actuation force: 2.0, 3.5, 6.5 N



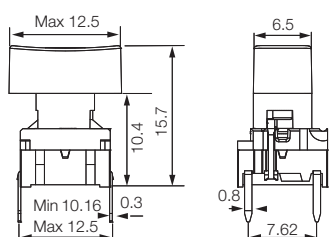
### Dimensions (through-hole)



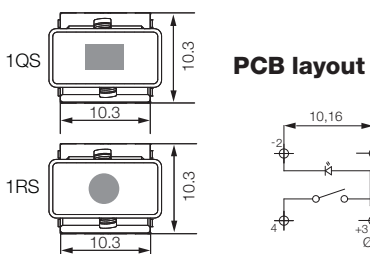
### PCB layout



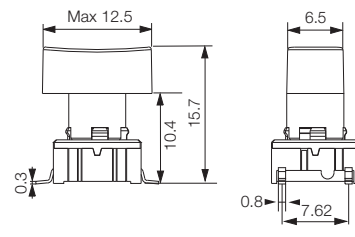
### Dimensions (w/LED)



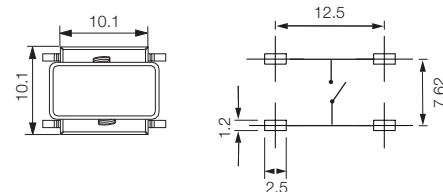
### PCB layout






### Dimensions (SMD)




### PCB layout



### HOW TO ORDER

<b>5 G</b>	<input type="checkbox"/>	<input type="checkbox"/>	<input type="checkbox"/>	<input type="checkbox"/>	<input type="checkbox"/>	<input type="checkbox"/>
<b>Switch</b>	<b>Mounting</b>	<b>Actuation force</b>	<b>LED</b>	<b>Cap</b>	<b>Colour code</b>	<b>Lens</b>
	<b>TH9</b> through-hole	<b>20</b>	<b>01</b> blue	<b>1QS</b> with lens	<b>00</b> blue	<b>1</b> transparent
	<b>SH9</b> surface mount	<b>35</b>	<b>22</b> green		<b>03</b> grey	<b>6</b> frosted white
		<b>65</b>	<b>42</b> yellow	<b>1RS</b> with lens	<b>08</b> red	
			<b>61</b> white		<b>09</b> black	
			<b>82</b> red	<b>1PS</b>		
			<b>2242</b> green/yellow		<b>11</b> transparent	
			<b>8222</b> red/green		<b>16</b> frosted white	
			<b>8242</b> red/yellow			

### Switch to be used: 5E or 5G

<b>5 E</b>	<input type="checkbox"/>	<input type="checkbox"/>	<input type="checkbox"/>	<input type="checkbox"/>
<b>5 G</b>	<b>Mounting</b>	<b>Actuation force</b>	<b>Cap</b>	<b>Colour code</b>
	<b>TH9</b> through-hole	<b>20</b>	<b>1PS</b> solid colour	<b>00</b> blue
	<b>SH9</b> surface mount	<b>35</b>		<b>02</b> green
		<b>65</b>		<b>03</b> grey
				<b>04</b> yellow
				<b>06</b> white
				<b>08</b> red
				<b>09</b> black

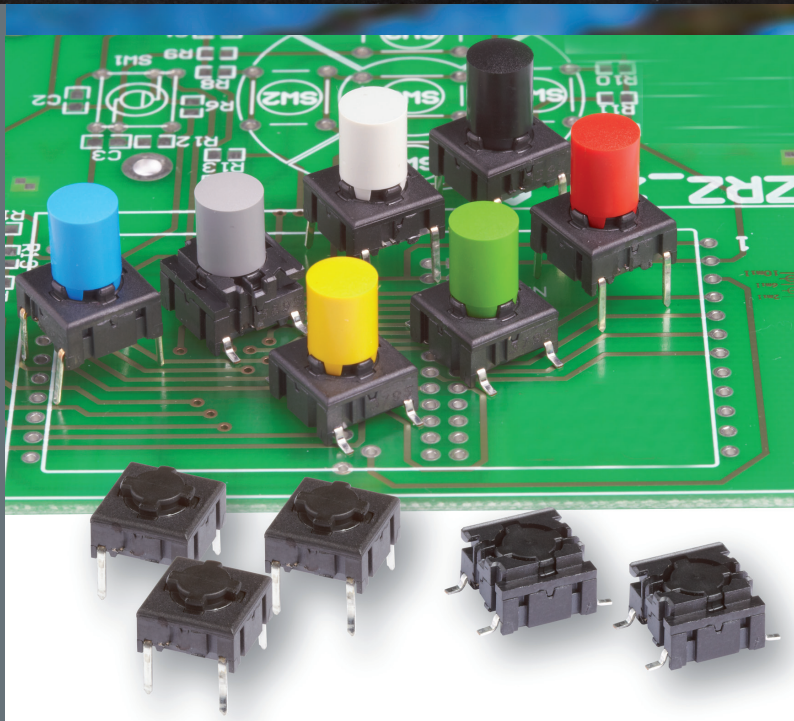


# 1SS/1LS/1IS



The new caps for the Multimec switches 1SS/1LS/1IS are optimised with a “snap-on” system to ensure the cap to stay on the switch actuator even under heavy vibrations or similar scenarios.

- The 1SS cap is solid cap which can be supplied in different colours
- The 1LS cap is a solid cap like 1SS, but with a small round lens for intensive or smooth illumination
- The 1IS cap is a transparent or frosted white cap like 1SS, for intensive or smooth illumination



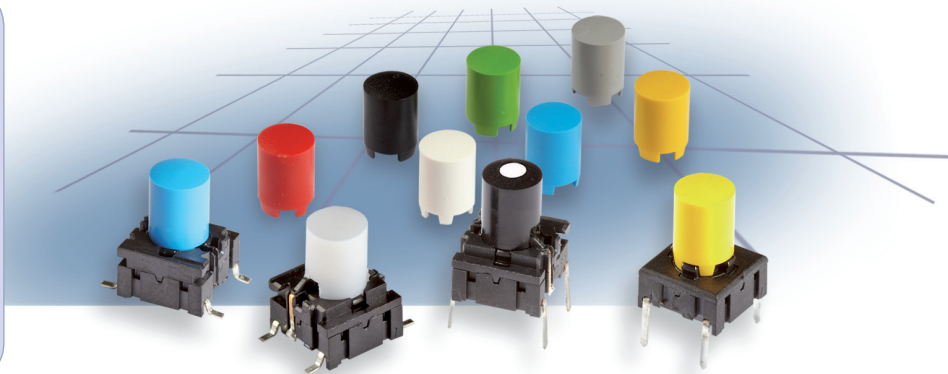
Distributor:

# multimec®

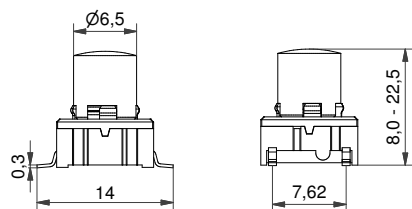
## 5E/5G + 1SS/1LS/1IS

### Technical Data:

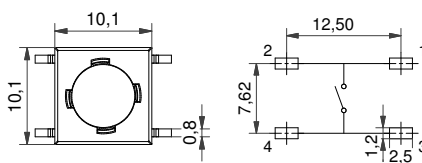
- through-hole or SMD
- 50mA/24VDC
- single pole/momentary
- 10.000.000 operations lifetime
- IP67 sealing
- temp. range: switch: -40/+160°C  
LED: -30/+85°C  
solid keycap: -40/+160°C  
transparent keycap: -40/+85°C
- actuation force: 2.0, 3.5, 6.5 N



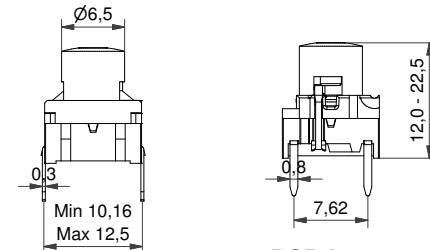
### Dimensions (SMD) + 1SS



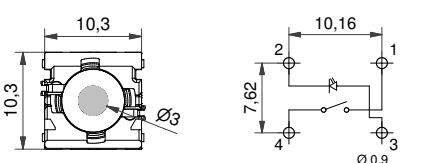
### PCB layout



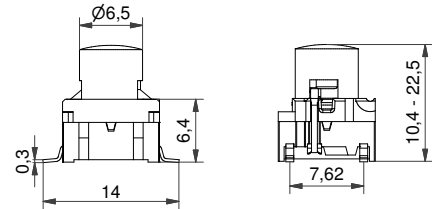
### Dimensions (TH w/LED) + 1LS



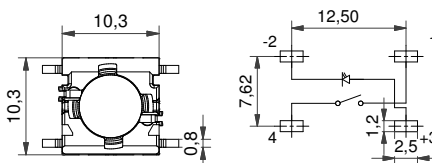
### PCB layout




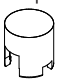
### Dimensions (SMD w/LED) + 1IS



### PCB layout



### HOW TO ORDER illuminated

<b>5 G</b>				+					
<b>Switch</b>	<b>Mounting</b>	<b>Actuation force</b>	<b>LED</b>		<b>Cap</b>	<b>Colour code</b>	<b>Lens</b>	<b>Height/1LS</b>	
	TH9 through-hole	20	01 blue		1LS with lens	00 blue	1 transparent	12.0	19.0
	SH9 surface mount	35	22 green			03 grey	2 green	15.0	22.5
		65	42 yellow			08 red	4 yellow	16.0	
		Q*	61 white			09 black	6 frosted white	<b>Height/1IS</b>	
			82 red		1IS	11 transparent	8 red	10.4	16.0
			2242 green/yellow		transparent	16 frosted white		11.0	19.0
			8222 red/green					12.0	22.5
			8242 red/yellow					15.0	

### HOW TO ORDER non-illuminated

<b>5 E</b>				+				
<b>5 G</b>								
<b>Switch</b>	<b>Mounting</b>	<b>Actuation force</b>			<b>Cap</b>	<b>Colour code</b>	<b>Height</b>	
	TH9 through-hole	20			1SS	00 blue	08.0	16.0
	SH9 surface mount	35			solid colour	02 green	09.5	19.0
		65				03 grey	10.4	22.5
		Q*				04 yellow	11.0	
						06 white	12.0	
						08 red	15.0	