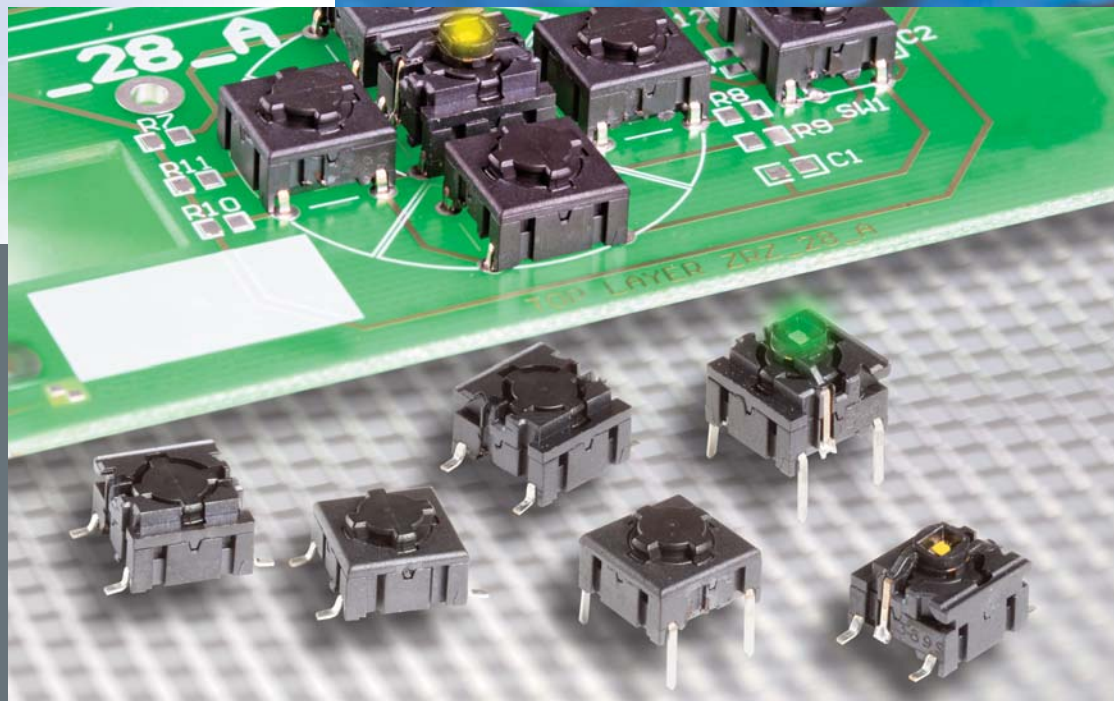


mec

switches

5E/5G



The Multimec 5E and 5G series is the new generation of the existing 3A, 3C, 3E, 3F, 4A and 4Fmultimec switches. The 5E and 5G series is a narrower product line, but the flexibility is more advanced. The switches will be supplied in high temperature material only to stand today's advanced soldering processes. The cap holding system is improved, by a superior snap system.

The 5E and 5G series can be supplied with LED's integrated in the switch and also as a surface mount switch. A high variety of aesthetic designed keycaps is available for the multimec switches both as solid caps, but also with excellent illumination possibilities.

The standard program will include three different actuation forces: 2, 3.5, and 6.5N. The multimec switches are known for their crisp audible tactile feel although a quiet version is available for sensitive applications such as audio, conference and military equipment.

The switch can be used as through-hole or SMD versions, and are designed to be used in a wide variety of applications.



Distributor:

multimec®

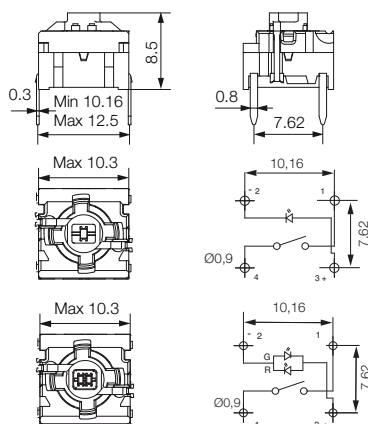
5E/5G

Technical Data:

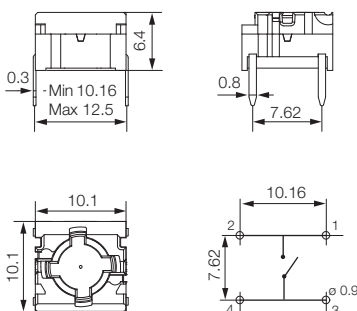
- through-hole or SMD / 50mA/24VDC / single pole/momentary
- 10.000.000 operations life time / IP67 sealing / actuation force: 2.0, 3.5, 6.5 N
- high temperature -40/+160° C



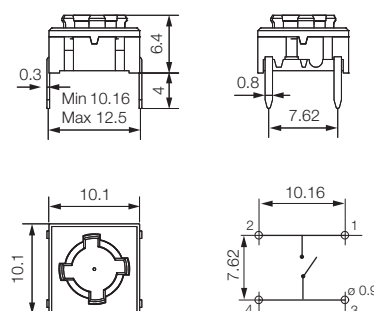
5GTH9 (through-hole) 1+2 LED



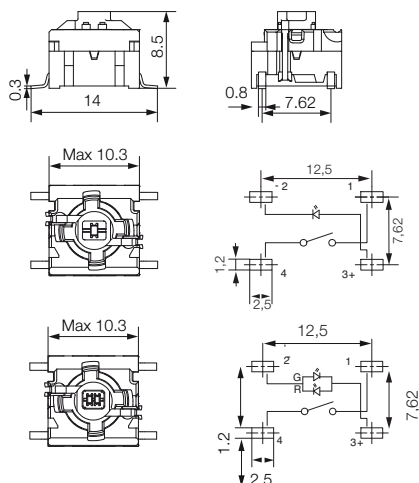
5GTH9 (through-hole)



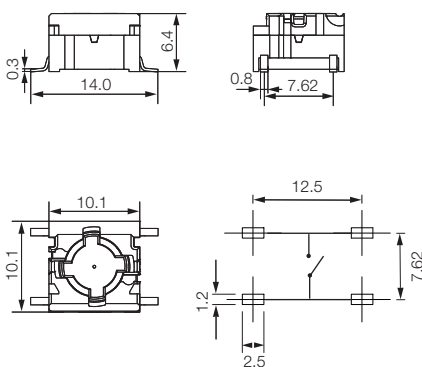
5ETH9 (through-hole)



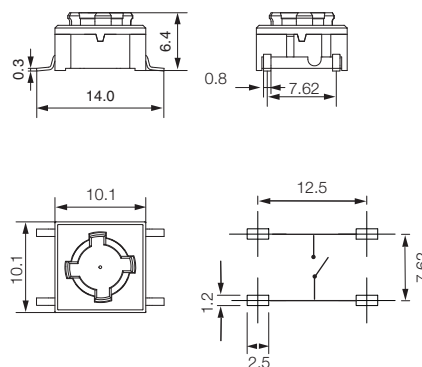
5GSH9 (SMD) 1+2 LEDS



5GSH9 (SMD)



5ESH9 (SMD)



HOW TO ORDER

5 G					
Switch	Mounting	Actuation force	LED		
	TH9 through-hole	20	01 blue / 22 green / 42 yellow / 61 white / 82 red / 2242 green/yellow / 8222 red/green / 8242 red/yellow		
	SH9 surface mount	35			
		65			

5 E					
Switch	Mounting	Actuation force	5 G		
	TH9 through-hole	20	Switch	Mounting	Actuation force
	SH9 surface mount	35		TH9 through-hole	20
				SH9 surface mount	35
					65



1A/1H/1M/1ZA



1A/1H/1M/1ZA series caps have a hinge-type retention system which gives a rocker-action actuation when mounted on Multimec 5G switch.

Illumination can be provided with 1A in transparent colours or 1H with different colour lenses.

1A/1H, 1ZA and 1M caps offer three different dimensions, many solid and transparent colours as well as lens colours. 1A has many legend options in its standard offering; however, all caps can be provided with custom legends.

*Letter legends on the picture are not standard



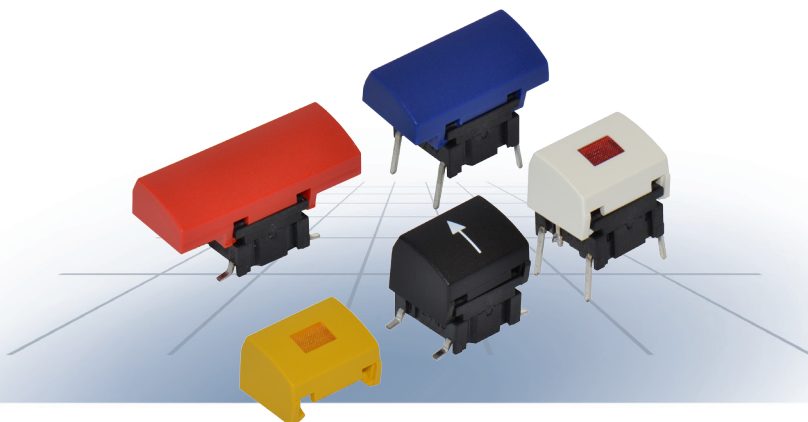
Distributor:

multimec®

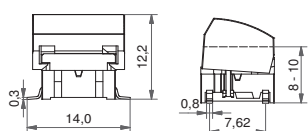
5G + 1A/1H/1M/1ZA

Technical Data:

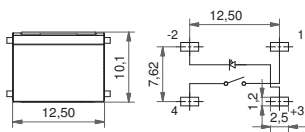
- through-hole or SMD
- 50mA/24VDC
- single pole/momentary
- 10.000.000 operations lifetime
- IP67 sealing
- temp. range: switch: -40/+160°C
LED: -30/+85°C
solid keycap: -40/+65°C
transparent keycap: -40/+85°C
- actuation force: 2.0, 3.5, 6.5 N



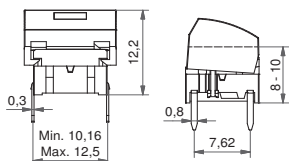
Dimensions (SMD w/LED) 1A



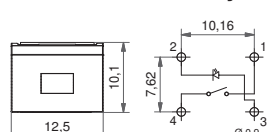
PCB layout



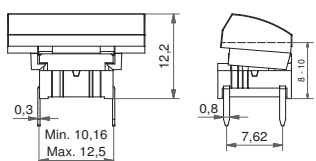
Dimensions (TH w/LED) 1H



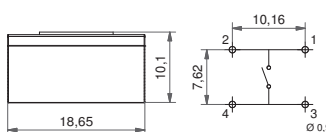
PCB layout



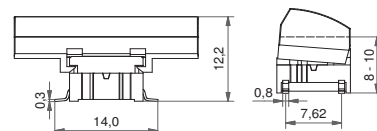
Dimensions (through-hole) 1ZA



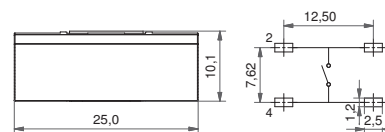
PCB layout



Dimensions (SMD) 1M



PCB layout



HOW TO ORDER illuminated

5 G				+				
Switch	Mounting	Actuation force	LED		Cap	Colour code 1H	Lens 1H	
	TH9 through-hole	20	01 blue		1H	00 blue 06 white	1 transparent	
	SH9 surface mount	35	22 green			02 green 08 red	2 green	
		65	42 yellow			03 grey 09 black	4 yellow	
		Q**	61 white			04 yellow	6 frosted white	
			82 red			Colour code 1A	8 red	
			2242 green/yellow		1A	10 frosted blue 16 frosted white		
			8222 red/green			12 frosted green 18 frosted red		
			8242 red/yellow			14 frosted yellow		

HOW TO ORDER non-illuminated

5 G				+				
Switch	Mounting	Actuation force	Cap		Colour code			
	TH9 through-hole	20	1A		00 blue 30*ultra blue 50*metal dark blue			
	SH9 surface mount	35			02 green 40*dusty blue 53*metal light grey			
		65	1ZA		03*grey 42*aqua blue 57*metal dark grey			
		Q**			04 yellow 32 mint green 58 metal bordeaux			
			1M		06*white 33 tele grey			
					08 red 34 melon			
					09*black 38 noble red			

**Quiet version is only available for actuation force 2.0N (20) and the letter Q is added to the end of the switch part number. See the ordering example.

Dimensions (mm) Unless otherwise specified, all tolerances +/- 0.2



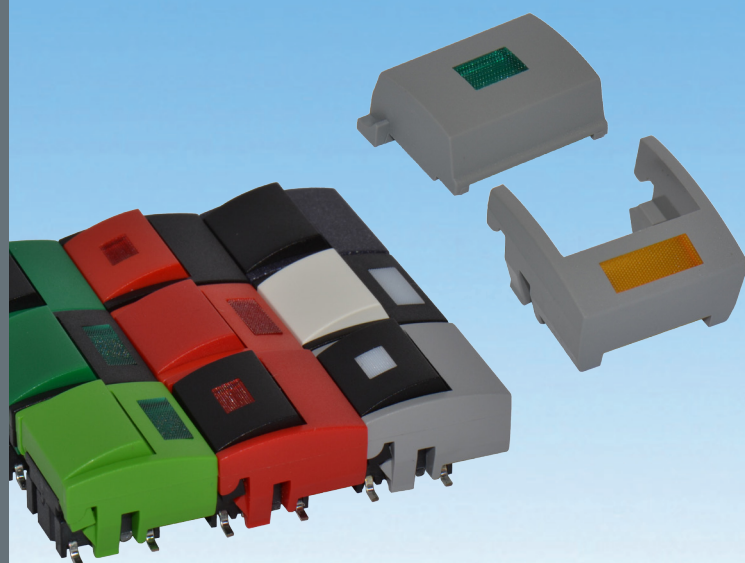
1B/1C+2C/2D



1B/1C cap and 2C/2D bezel series have a award-winning design. The cap is connected to the bezel with a hinge-type retention system and the bezel snaps on to the switch.

The series provides many design options with its solid and transparent colour range as well as different illumination option.

Illumination can be achieved by using 1B cap in transparent colour, 1C cap with a lens or 2D bezel with a lens where LED is placed on the PCB.



Distributor:

mec
switches

1DS/1ES/1FS



The new caps for the Multimec switches 1DS / 1ES / 1FS is optimized with a “snap on” system to ensure the cap to stay on the switch actuator even under heavy vibrations or similar scenarios.

- The 1DS cap is a solid cap which can be supplied in different colours
- The 1ES cap is a solid cap like 1DS, but with a small round lens for intensive or smooth illumination
- The 1FS cap is a solid cap like 1DS, but with a large round lens for intensive or smooth illumination



multimec®

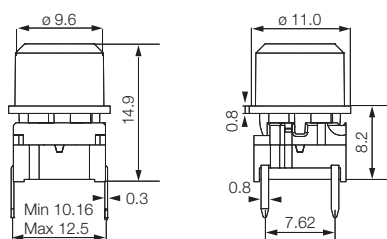
5G + 1DS/1ES/1FS

Technical Data

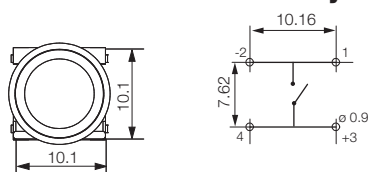
- through-hole or SMD
- 50mA/24VDC
- single pole/momentary
- 10.000.000 operations life time
- IP67 sealing
- temperature range:
LED: -40/+85°C
solid cap +65°C
transparent +85°C
- actuation force: 2.0, 3.5, 6.5 N



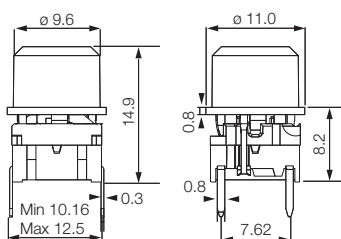
Dimensions (through-hole)



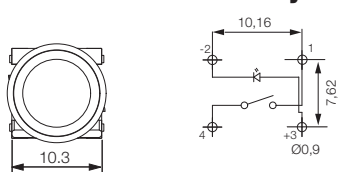
PCB layout



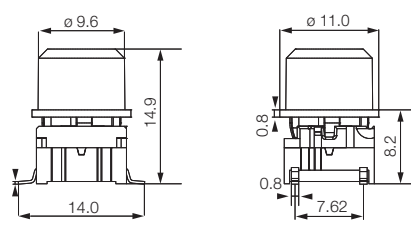
Dimensions (w. LED)



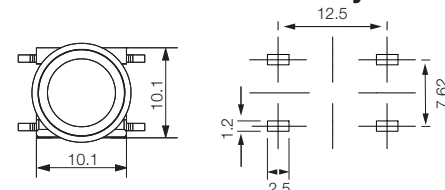
PCB layout



Dimensions (SMD)



PCB layout



HOW TO ORDER

5 G						
Switch	Mounting	Actuation force	LED	Cap	Colour code	Lens
	TH9 through-hole	20	01 blue	1ES with lens	00 blue	1 transparent
	SH9 surface mount	35	22 green		03 grey	6 frosted white
		65	42 yellow	1FS with lens	08 red	
			61 white		09 black	
			82 red			
			2242 green/yellow			
			8222 red/green			
			8242 red/yellow			

1DS



11 transparent
16 frosted white

5 G					
Switch	Mounting	Actuation force	Cap	Colour code	
	TH9 through-hole	20	1DS solid colour	00 blue	
	SH9 surface mount	35		02 green	
		65		03 grey	
				04 yellow	
				06 white	
				08 red	
				09 black	



1GAS/1GCS



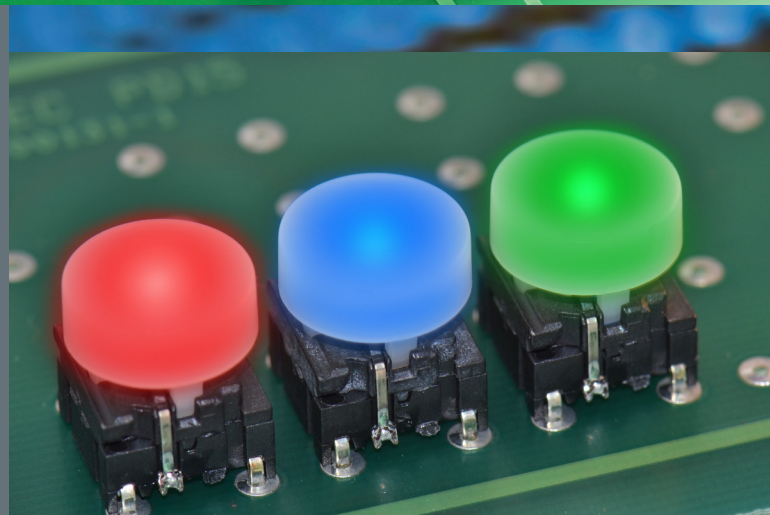
The 1GAS/1GCS caps are optimised for use with foil overlays.

Compared to conventional membrane panels it provides an extremely rugged and a long-term cost-effective solution with increased reliability, enhanced product life and improved tactile feel.

The new caps have 9 standard colour options: blue, green, grey, yellow, white, red, black, transparent and frosted white.

Even more, the under part of the new cap series has been cleared, so the caps in transparent and frosted white can provide excellent illumination.

When used with the 2SS variable height extender, the 1GAS/1GCS caps can be to any required operating height between 17.5-22.5mm.



Distributor:

multimec®

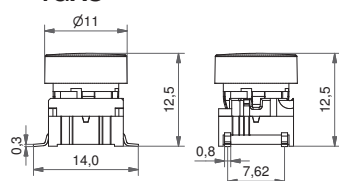
5G + 1GAS/1GCS

Technical Data:

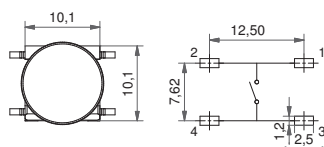
- through-hole or SMD
- 50mA/24VDC
- single pole/momentary
- 10.000.000 operations lifetime
- IP67 sealing
- temp. range: switch: -40/+160°C
LED: -30/+85°C
solid keycap: -40/+160°C
transparent keycap: -40/+85°C
- actuation force: 2.0, 3.5, 6.5 N



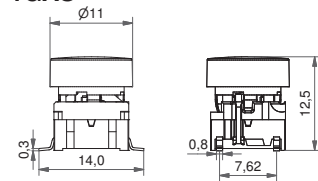
Dimensions (SMD) + 1GAS



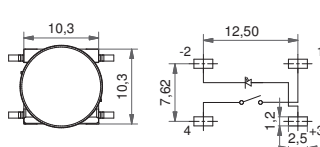
PCB layout



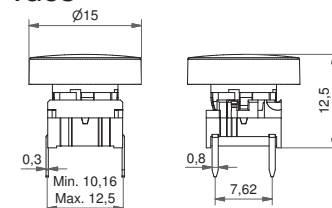
Dimensions (SMD w/LED) + 1GAS



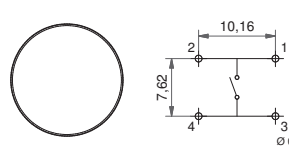
PCB layout



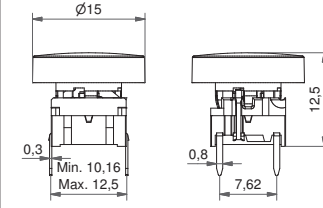
Dimensions (through-hole) + 1GCS



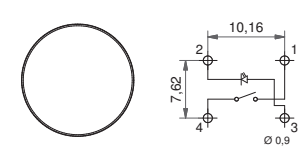
PCB layout



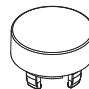

Dimensions (TH w/LED) + 1GCS



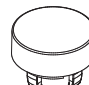

PCB layout



HOW TO ORDER illuminated

5 G				+				
Switch	Mounting	Actuation force	LED		Cap	1GAS	1GCS	Colour code
	TH9 through-hole	20	01 blue		transparent colour			11 transparent
	SH9 surface mount	35	22 green					16 frosted white
		65	42 yellow					
		Q*	61 white					
			82 red					
			2242 green/yellow					
			8222 red/green					
			8242 red/yellow					

HOW TO ORDER non-illuminated

5 G				+				
Switch	Mounting	Actuation force			Cap	1GAS	1GCS	Colour code
	TH9 through-hole	20			solid colour			00 blue
	SH9 surface mount	35						02 green
		65						03 grey
		Q*						04 yellow
								06 white
								08 red
								09 black