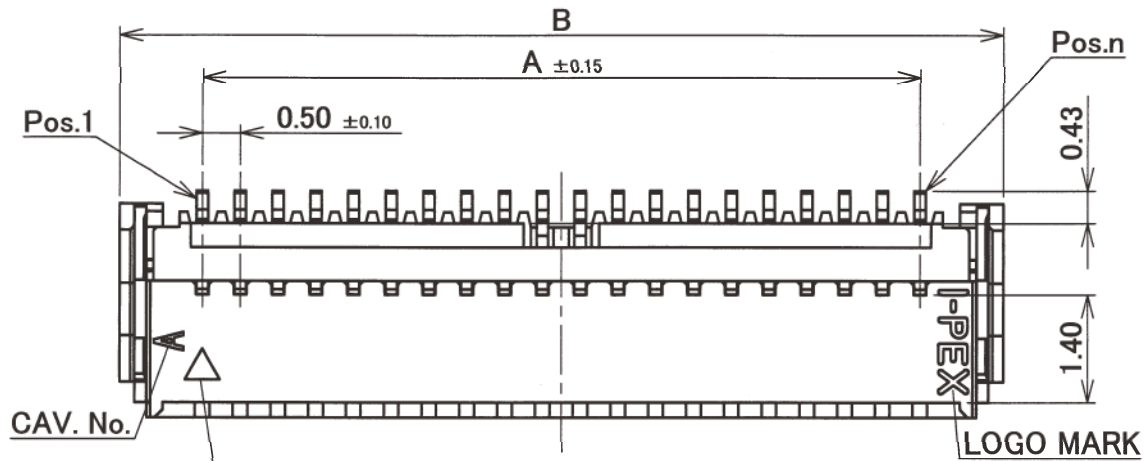


Recommended P/N 20542-0**E-01

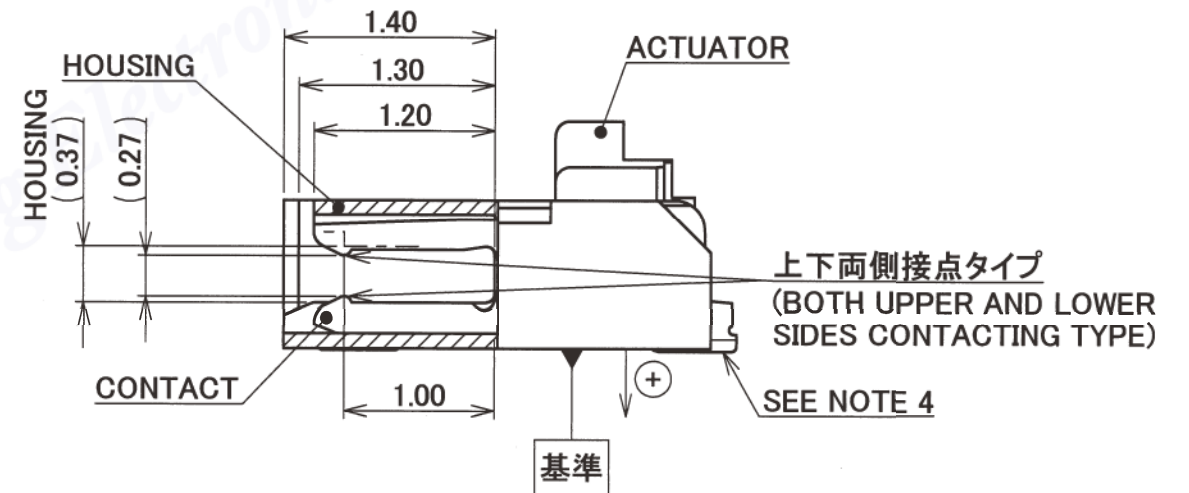
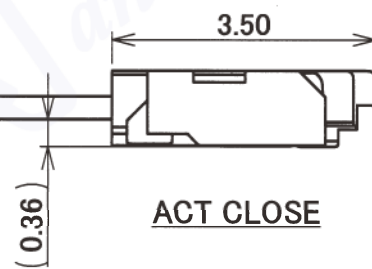
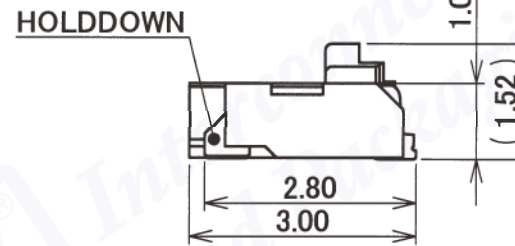
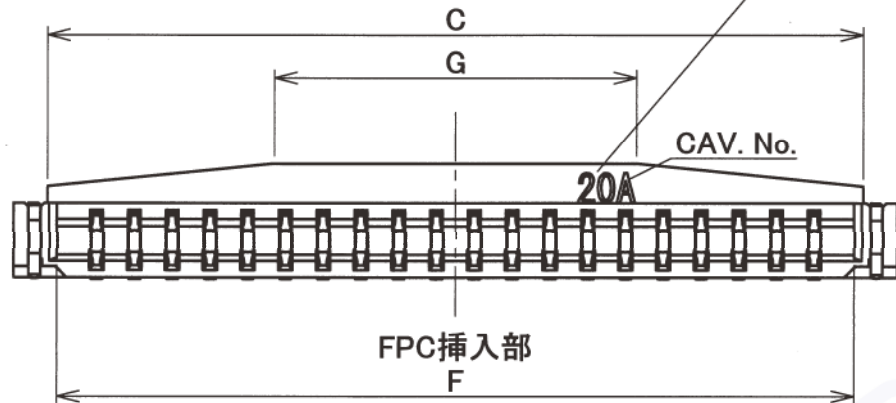
PART No.
20542-0**E-01

PART No.	POS.	A	B	C	D	E	F	G
20542-004E-01	4	1.50	3.70	2.80	2.50	3.15	2.56	1.80
20542-006E-01	6	2.50	4.70	3.80	3.50	4.15	3.56	2.80
20542-008E-01	8	3.50	5.70	4.80	4.50	5.15	4.56	3.80
20542-010E-01	10	4.50	6.70	5.80	5.50	6.15	5.56	4.80
20542-012E-01	12	5.50	7.70	6.80	6.50	7.15	6.56	5.80
20542-014E-01	14	6.50	8.70	7.80	7.50	8.15	7.56	6.80
20542-016E-01	16	7.50	9.70	8.80	8.50	9.15	8.56	7.80
20542-018E-01	18	8.50	10.70	9.80	9.50	10.15	9.56	8.80
20542-020E-01	20	9.50	11.70	10.80	10.50	11.15	10.56	9.80
20542-022E-01	22	10.50	12.70	11.80	11.50	12.15	11.56	10.80
20542-024E-01	24	11.50	13.70	12.80	12.50	13.15	12.56	11.80
20542-026E-01	26	12.50	14.70	13.80	13.50	14.15	13.56	12.80
20542-028E-01	28	13.50	15.70	14.80	14.50	15.15	14.56	13.80
20542-030E-01	30	14.50	16.70	15.80	15.50	16.15	15.56	14.80



6P~30P : WITH DATUM PIN MARK
4P : WITHOUT DATUM PIN MARK

6P~30P : WITH POS. No.
4P : WITHOUT POS. No.



NOTES

- MATERIAL & FINISH
 HOUSING : HEAT RESISTING PLASTICS, UL94V-0, BEIGE
 ACTUATOR : HEAT RESISTING PLASTICS, UL94V-0, BEIGE
 CONTACT : COPPER ALLOY
 Au OVER Ni PLATING
 HOLDDOWN : COPPER ALLOY
 Sn OVER Ni PLATING
- PRODUCT SPECIFICATION NO. PRS-1619
- INSTRUCTION MANUAL NO. HIM-12019
- CONTACT & HOLDDOWN COPLANARITY : 0.08MAX
- C/T TAIL IS PROJECTION FROM HOUSING IN THE + DIRECTION. (0~0.06)
- RoHS COMPLIANT

GENERAL TOLERANCE	
6 MAX.	±0.2
6 OVER MAX. 30	±0.3
30 OVER MAX. 120	±0.5
ANGLE	±2°

Confidential III C

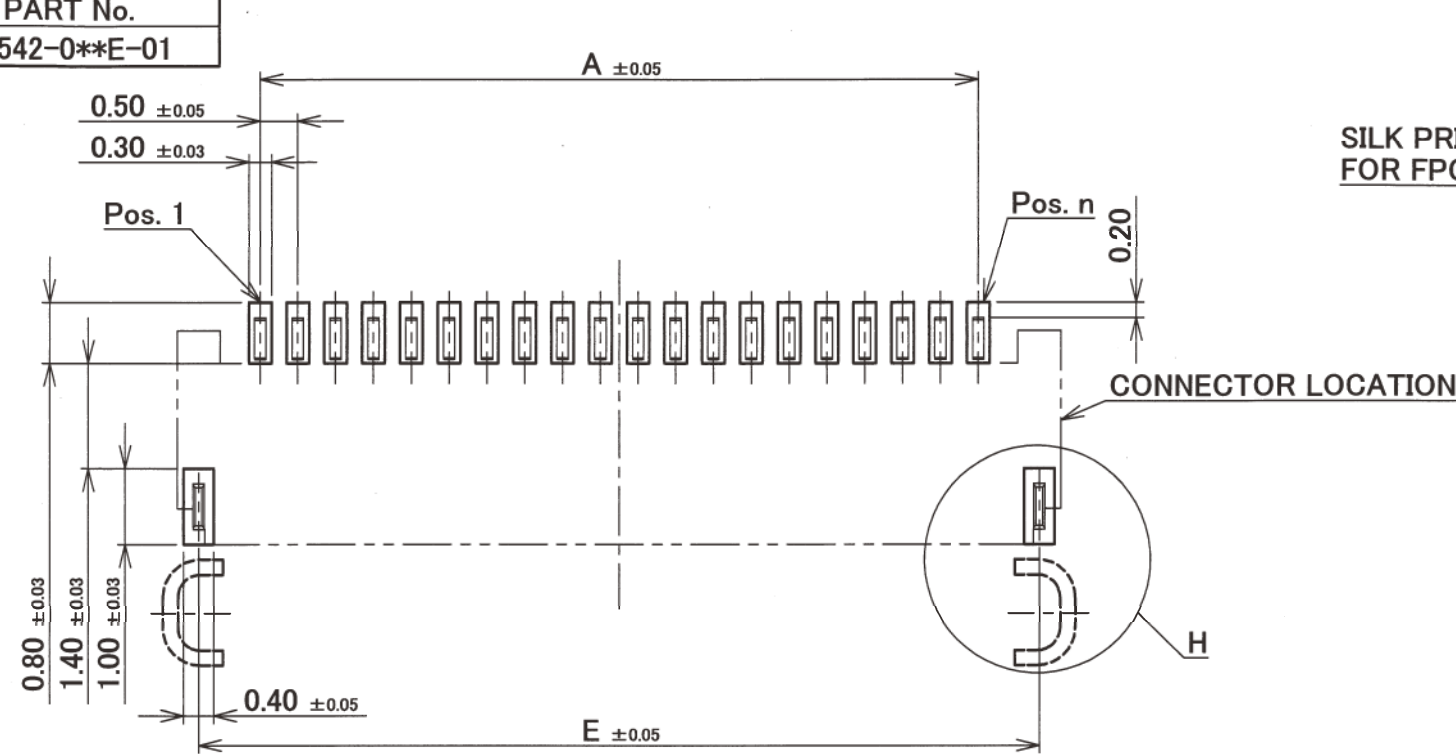
SERIES No.	R4	CUSTOMER COPY	PROJECTION	SCALE	UNIT	DWG. No.	SHEET	REV.
				10:1	mm	20542	1/2	5

I-PEX DAI-ICHI SEIKO CO.,LTD.
I-PEX Business Company

TITLE
MINIFLEX5-BFNII

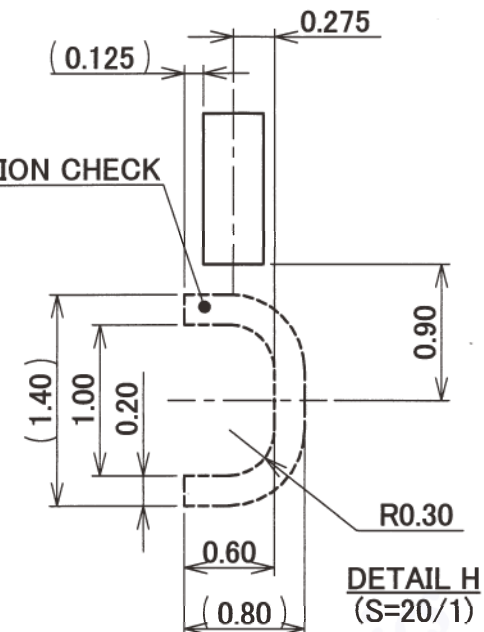
Recommended P/N 20542-0**E-01

PART No.
20542-0**E-01

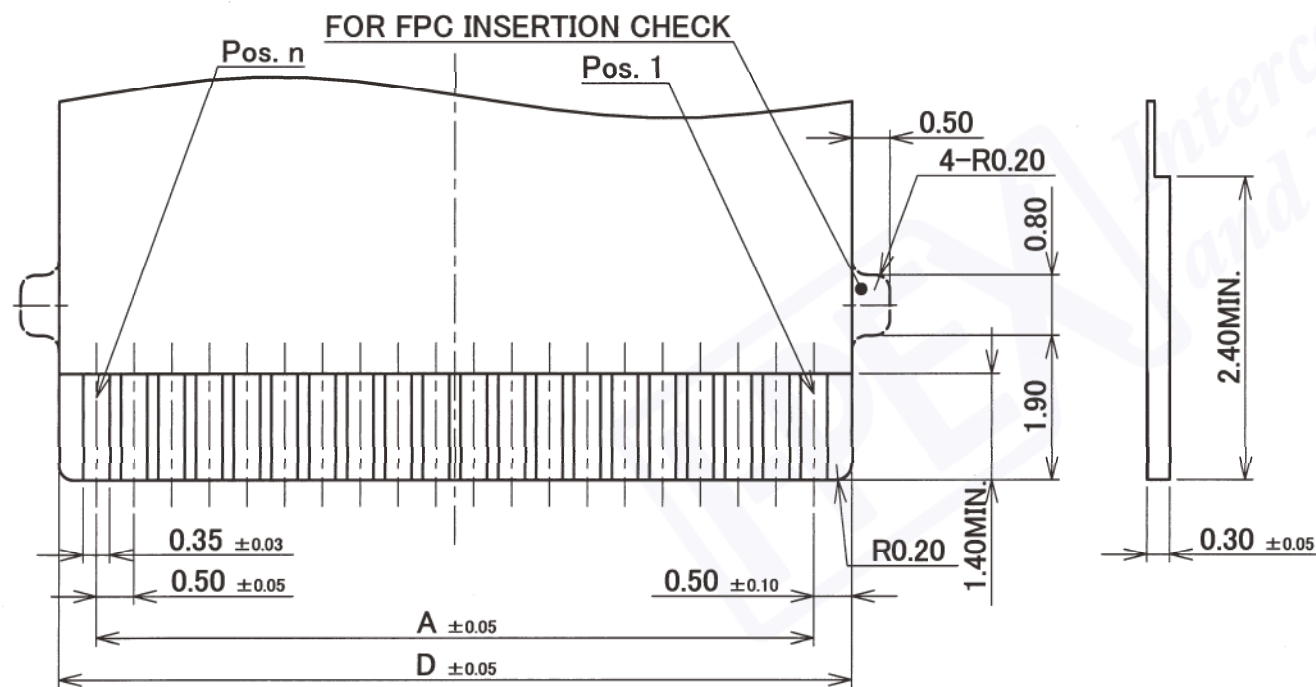


RECOMMENDED PCB LAYOUT & METAL MASK LAYOUT
METAL MASK THICKNESS : t=0.12mm

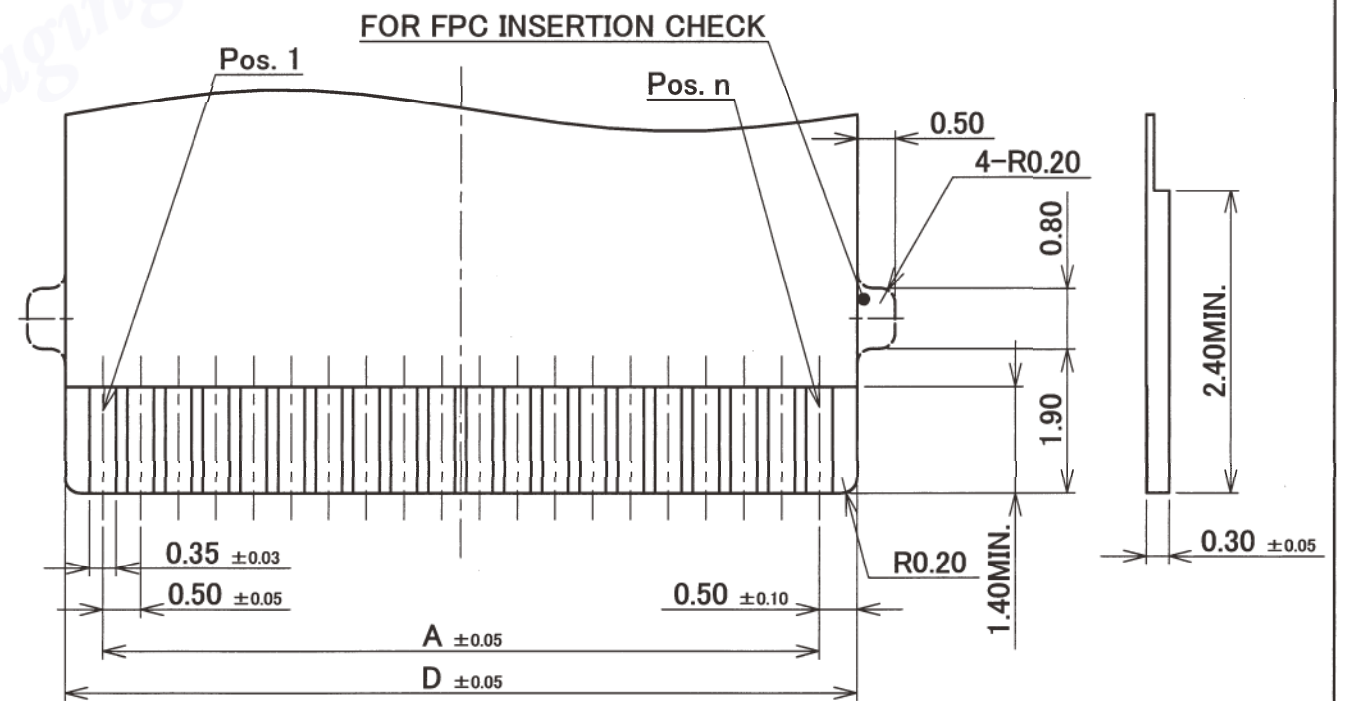
SILK PRINT FOR FPC INSERTION CHECK



PART No.	POS.	A	D	E
20542-004E-01	4	1.50	2.50	3.15
20542-006E-01	6	2.50	3.50	4.15
20542-008E-01	8	3.50	4.50	5.15
20542-010E-01	10	4.50	5.50	6.15
20542-012E-01	12	5.50	6.50	7.15
20542-014E-01	14	6.50	7.50	8.15
20542-016E-01	16	7.50	8.50	9.15
20542-018E-01	18	8.50	9.50	10.15
20542-020E-01	20	9.50	10.50	11.15
20542-022E-01	22	10.50	11.50	12.15
20542-024E-01	24	11.50	12.50	13.15
20542-026E-01	26	12.50	13.50	14.15
20542-028E-01	28	13.50	14.50	15.15
20542-030E-01	30	14.50	15.50	16.15



RECOMMENDED FPC LAYOUT (TOP CONTACT TYPE)



RECOMMENDED FPC LAYOUT (BOTTOM CONTACT TYPE)

GENERAL TOLERANCE	
6 MAX.	± 0.2
6 OVER MAX. 30	± 0.3
30 OVER MAX. 120	± 0.5
ANGLE	$\pm 2^\circ$

I-PEX DAI-ICHI SEIKO CO.,LTD.
I-PEX Business Company

TITLE		DWG. No.		SHEET	REV.
MINIFLEX5-BFNII		20542		2/2	5

SERIES No.	CUSTOMER COPY	PROJECTION	SCALE	UNIT	DWG. No.	SHEET	REV.
R4	CUSTOMER COPY		10:1	mm	20542	2/2	5