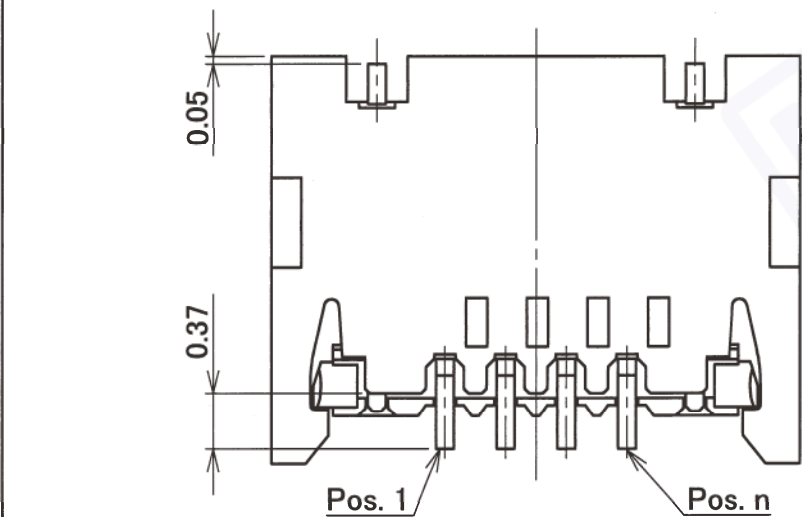
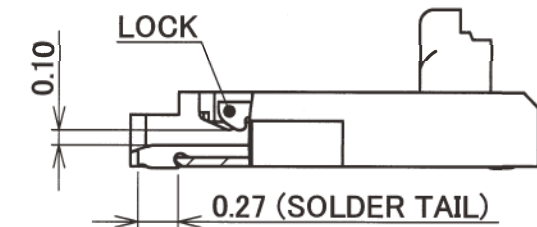
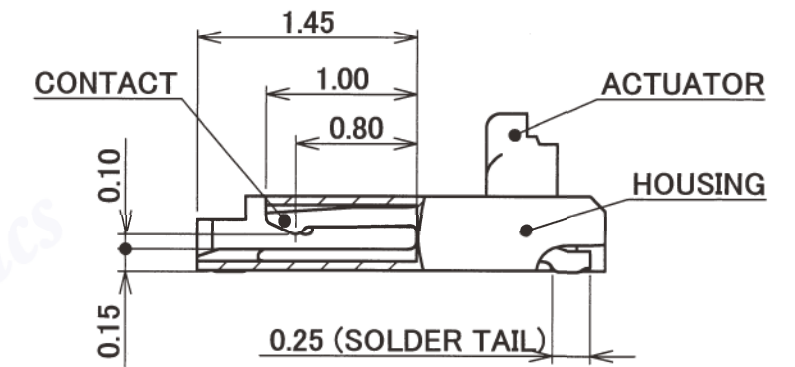
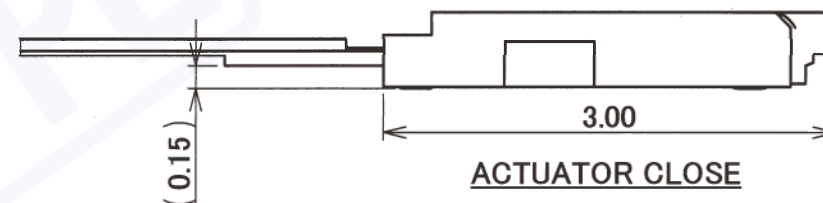
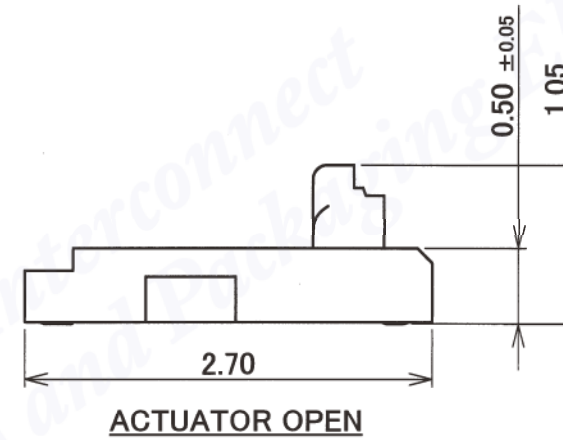
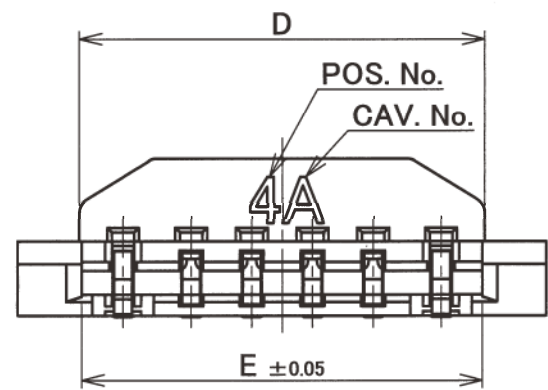
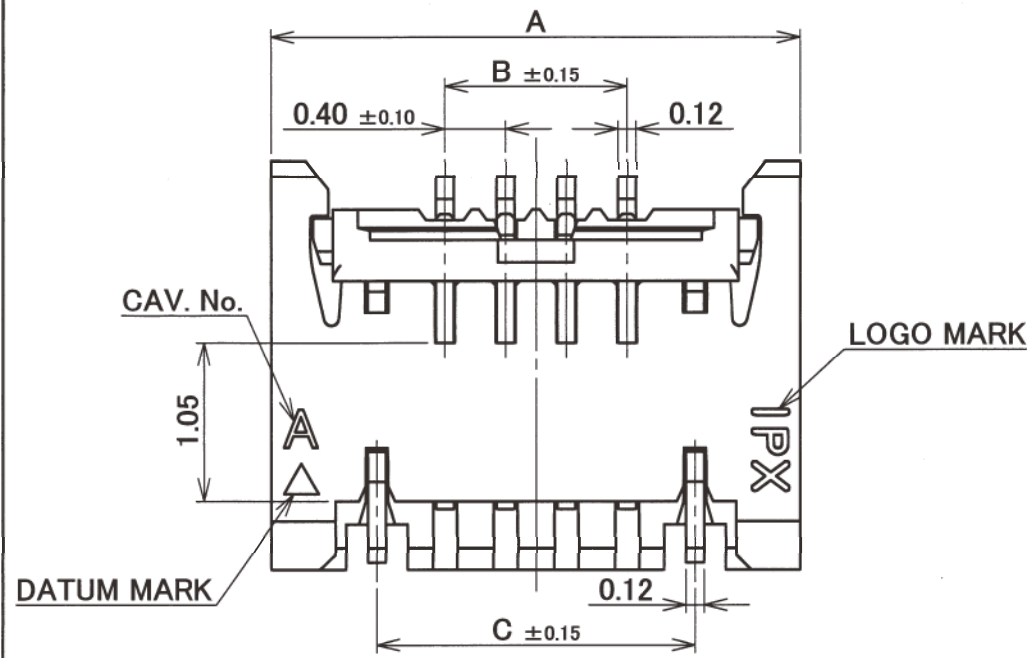


PART No.
20588-0**E-01

PART No.	Pos.	A	B	C	D	E
20588-004E-01	4P	3.50	1.20	2.10	2.68	2.65
20588-006E-01	6P	4.30	2.00	2.90	3.48	3.45
20588-008E-01	8P	5.10	2.80	3.70	4.28	4.25
20588-010E-01	10P	5.90	3.60	4.50	5.08	5.05
20588-012E-01	12P	6.70	4.40	5.30	5.88	5.85
◆20588-014E-01	14P	7.50	5.20	6.10	6.68	6.65
◆20588-015E-01	15P	7.90	5.60	6.50	7.08	7.05

◆MARK MEANS NOT AVAILABLE.



NOTES

1.MATERIALS

- HOUSING : HEAT RESISTING PLASTICS, UL94V-0, BEIGE
- ACTUATOR: HEAT RESISTING PLASTICS, UL94V-0, BEIGE
- CONTACT : COPPER ALLOY  
Au PLATING
- LOCK : COPPER ALLOY  
Au PLATING

2.COPLANARITY: 0.10MAX

3.PRODUCT SPECIFICATION NO. PRS-1863

4.RoHS Compliant

5.CONTACT POINT : ONLY UPPER CONTACT

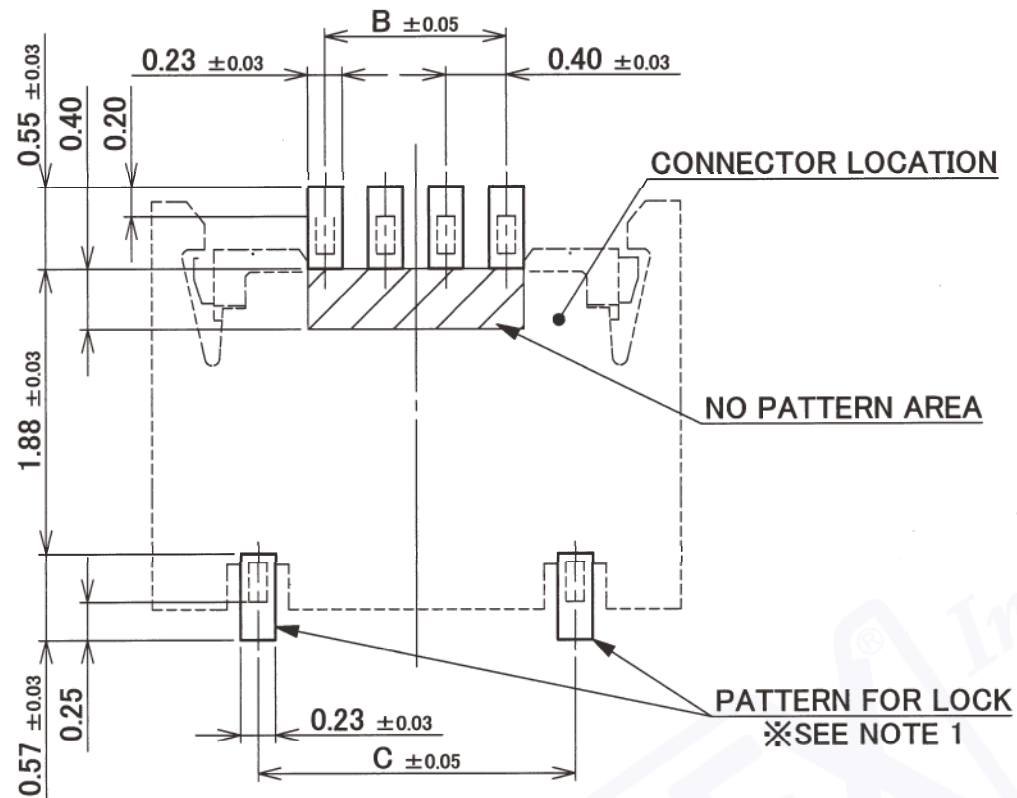
GENERAL TOLERANCE	
6 MAX.	±0.2
6 OVER MAX. 30	±0.3
30 OVER MAX. 120	±0.5
ANGLE	±2°



TITLE  
MINIFLEX4-ST

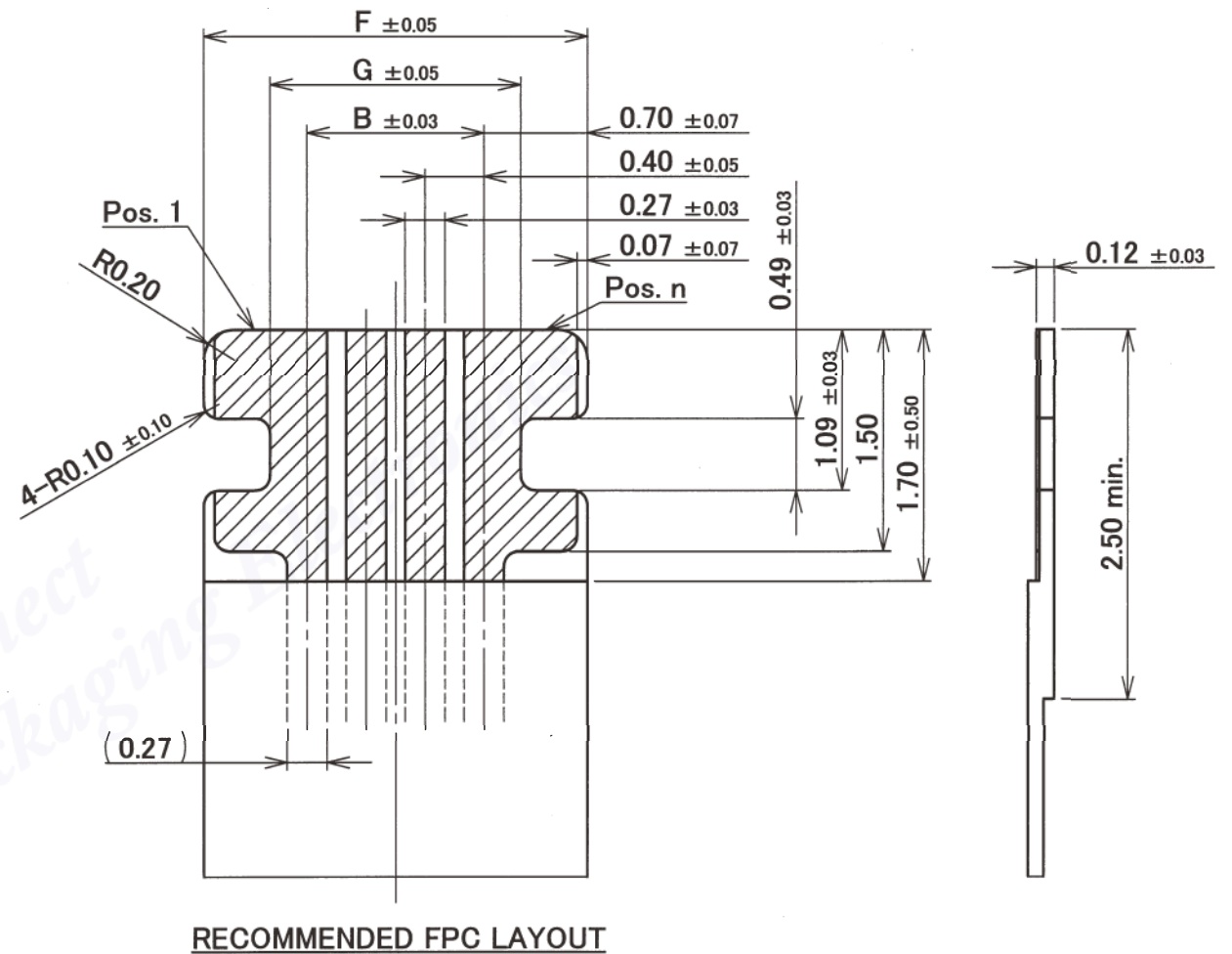
SERIES No.	R5	CUSTOMER COPY	PROJECTION	SCALE	UNIT	DWG. No.	SHEET	REV.
				20:1	mm	20588	1/2	5

Pos.	B	D	F	G
4P	1.20	2.10	2.60	1.70
6P	2.00	2.90	3.40	2.50
8P	2.80	3.70	4.20	3.30
10P	3.60	4.50	5.00	4.10
12P	4.40	5.30	5.80	4.90
14P	5.20	6.10	6.60	5.70
15P	5.60	6.50	7.00	6.10



RECOMMENDED PCB AND METAL MASK LAYOUT  
METAL MASK THICKNESS : t=0.12mm

NOTES  
1. PLEASE DO NOT CONNECT THESE TWO SOLDER PADS TO THE ELECTRICAL CIRCUIT, (SIGNAL OR GROUND)



RECOMMENDED FPC LAYOUT

NOTES  
1. MATERIAL  
COVER FILM : PI  
CONDUCTOR : COPPER  
BASE FILM : PI  
STIFFENER : PI  
ADHESIVE : THERMOSETTING ADHESIVE  
2. FINISH  
Au OVER Ni UNDER PLATING.

GENERAL TOLERANCE	
6 MAX.	±0.2
6 OVER MAX. 30	±0.3
30 OVER MAX. 120	±0.5
ANGLE	±2°

**I-PEX** DAI-ICHI SEIKO CO.,LTD.  
I-PEX Business Company

TITLE	
MINIFLEX4-ST	
SHEET	REV.
2/2	5

SERIES No.	CUSTOMER COPY	PROJECTION	SCALE	UNIT	DWG. No.	SHEET	REV.
R4			20:1	mm	20588	2/2	5