

LOW PROFILE COMPRESSION ONLY LOAD BUTTON LOAD CELL WITH MOUNTING PROVIDED

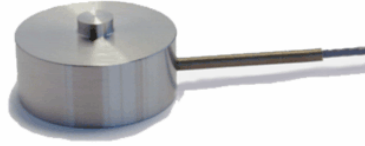
LBM SERIES



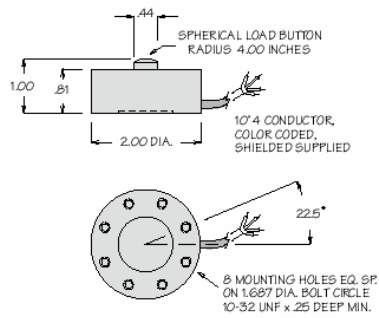
CAPACITY RANGES:

50, 100, 200, 500, 1,000, 2,000,
2,500, 5,000, 8,000, 10,000 LBS.

The LBM Series (Load Button) load cells are offered for compression only applications where space is limited. This load button is a direct replacement for many of the same type and bolt patterns currently used in the industry. The matching surface must be flat and at least 2 inches in diameter. The loading diameter is slightly convex for accurate load distribution. Eight threaded mounting holes are provided on the bottom surface for fastening down from beneath. These sensors are manufactured from heat treated 17-4ph stainless steel, and the sensing element incorporates bonded foil strain gages of the highest quality. They are sealed for protection against most industrial environments.



Rated Output (R.O.): 2 mV/V nominal
 Nonlinearity: 0.15% of R.O.
 Hysteresis: 0.1% of R.O.
 Nonrepeatability: 0.05% of R.O.
 Zero Balance: 1.0% of R.O.
 Compensated Temp. Range: 60° to 160°F
 Safe Temp. Range: -65° to 200°F
 Temp. Effect on Output: 0.005% of Load/°F
 Temp. Effect on Zero: 0.005% of R.O./°F
 Terminal Resistance: 350 ohms nominal
 Excitation Voltage: 10 VDC
 Safe Overload: 150% of R.O.
 Deflection Inches: 0.002 @ R.O.



Wiring Color Code (WCC1)	4 Conductor
--------------------------	-------------

Internal Temperature Compensation and Balance Network Not Shown

