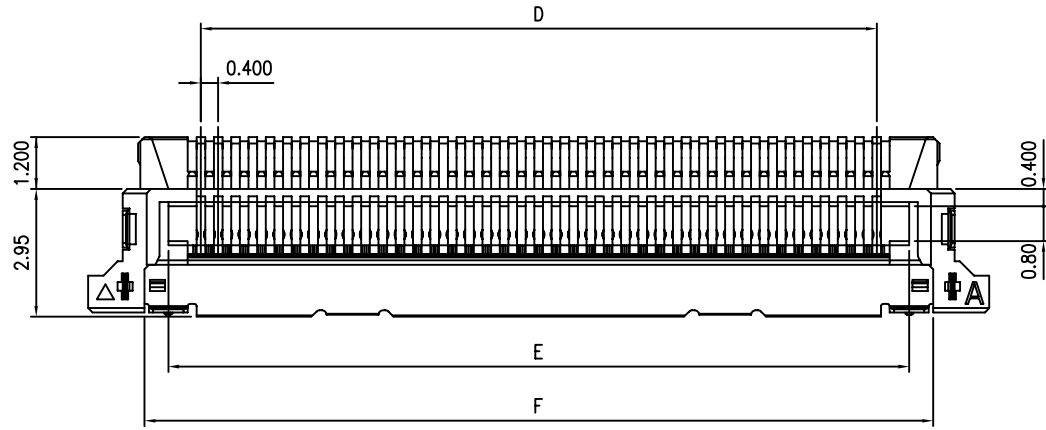
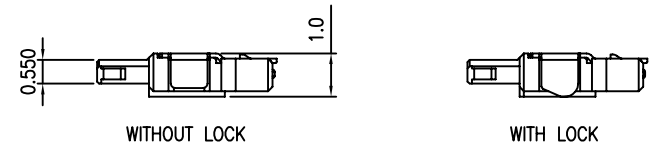
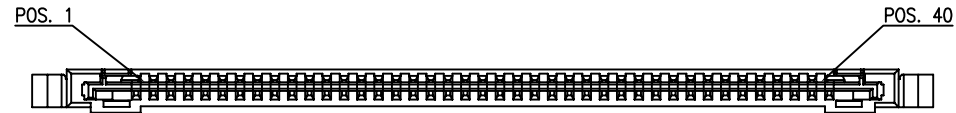


107GXX-X1XXXX-XX
WITH GROUND TYPE



NOTES:

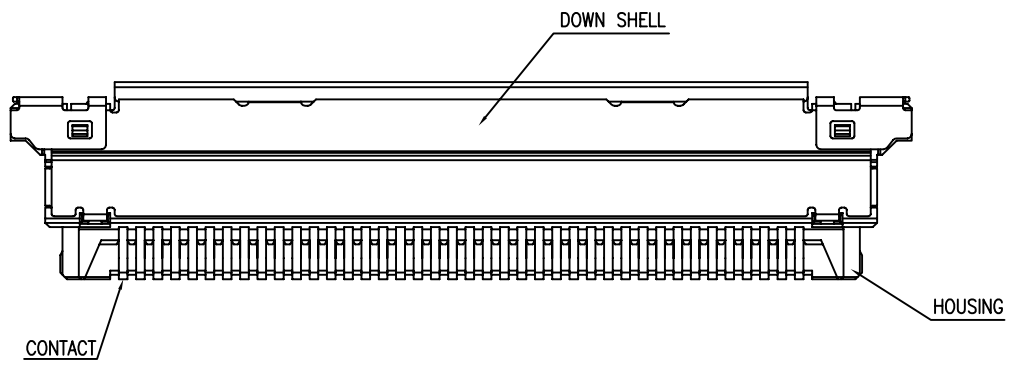
- UNLESS OTHERWISE SPECIFIED, ALL TOLERANCES FOLLOW DRAWING COMMON STANDARD.
- PART NO. DESCRIPTION :
 1 0 7 G X X - X X X X X - G 3
 NO. OF POSITIONS :
 40..... 40 POSITION
 30..... 30 POSITION
 LOCK OPTION :
 0..... WITHOUT LOCK
 1..... WITH LOCK
 GROUND OPTION :
 0..... WITHOUT GROUND
 1..... WITH GROUND
 DOWN SHELL MATERIAL :
 0..... STAINLESS STEEL
 1..... PHOSPHOR BRONZE
 PLATING THICKNESS :
 3..... 0.076μm [3μ]
 CONTACT PLATING OPTION :
 G..... GOLD PLATED ON CONTACT AREA OVER 50~150 μ"
 NICKEL UNDER PLATING
 WIRE SEPARTE PILLAR OPTION :
 1..... WITH WIRE SEPARTE PILLAR
 PACKING OPTION :
 T..... TRAY
 DOWN SHELL PLATING :
 0..... PURE TIN
 1..... GOLD FLASH

| PART NO. | POS. | A | B | C | D | E | F | G |
|------------------|------|-------|-------|-------|-------|-------|-------|-------|
| 107G40-XXXXXX-XX | 40 | 20.80 | 18.40 | 19.20 | 15.60 | 17.10 | 18.20 | 14.00 |
| 107G30-XXXXXX-XX | 30 | 16.80 | 14.40 | 15.20 | 11.60 | 13.10 | 14.20 | 10.50 |

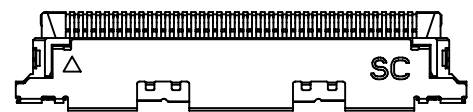
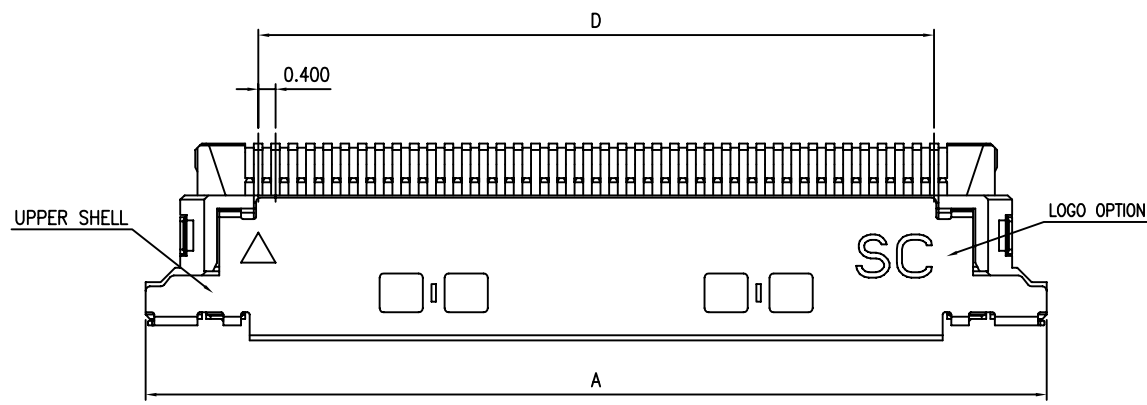
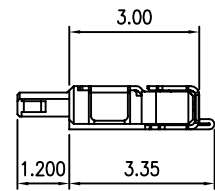
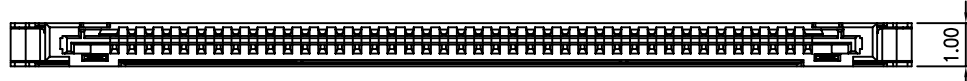
| NO. | DESCRIPTION | QTY. | MATERIAL | FINISH |
|-----|-------------|----------|---------------------------------|--|
| 4 | UPPER SHELL | 1 | STAINLESS STEEL OR COPPER ALLOY | PURE-TIN OVER NICKEL OR GOLD FLASH OVER NICKEL |
| 3 | DOWN SHELL | 1 | STAINLESS STEEL OR COPPER ALLOY | PURE-TIN OVER NICKEL OR GOLD FLASH OVER NICKEL |
| 2 | CONTACT | 40 30 | COPPER ALLOY | CONTACT AREA : Au(3μ) OVER NICKEL SOLDERING AREA : GOLD FLASH OVER NICKEL |
| 1 | HOUSING | 1 | GLASS FILLED LCP | |

| PROJECTION | TOLERANCE UNLESS OTHERWISE SPECIFIED | | TITLE |
|------------|--------------------------------------|----------------------|--|
| | LINEAR | ANGLE | |
| UNITS | .0 ± 0.25 | X° REF ± 5' | CABLE CONNECTOR 0.4 PH ASSEMBLY(WIRE SEPARTE PILLAR) |
| MM[INCH] | .00 ± 0.15 | X' ± 2" | |
| | .000 ± 0.10 | X'X' ± 1' | |
| SCALE | DRAW | Eric Lin 09-27-'10 | DWG NO. |
| | DESIGN | Eric Lin 09-27-'10 | 107GXX-XXXXXX-XX |
| SIZE | CHKD | Eric Lin 09-27-'10 | CAD NO. |
| | APPD. | Jayen Chen 09-27-'10 | E10771-1 |
| | | | REV. 1A |
| | | | SHEET 1/2 |

STARCONN
 慶良電子股份有限公司
 CHIEF LAND ELECTRONIC CO., LTD.



PART. NUMBER:
 CONTACT..... C10772-XXXXXX-XX
 HOUSING..... M10773-XXXXXX
 DOWN SHELL..... S10774-XXXXXX-XX(40POS.)
 S10776-XXXXXX-XX(30POS.)
 UPPER SHELL..... S10775-XXXXXX-XX(40POS.)
 S10777-XXXXXX-XX(30POS.)



ASSEMBLY TYPE 1/2 UPPER SHELL

| PART NO. | POS. | A | B | C | D | E |
|------------------|------|-------|-------|-------|-------|-------|
| 107G40-XXXXXX-XX | 40 | 20.80 | 18.40 | 19.20 | 15.60 | 17.10 |
| 107G30-XXXXXX-XX | 30 | 16.80 | 14.40 | 15.20 | 11.60 | 13.10 |

| NO. | DESCRIPTION | QTY. | MATERIAL | FINISH |
|-----|-------------|----------|---------------------------------|---|
| 4 | UPPER SHELL | 1 | STAINLESS STEEL OR COPPER ALLOY | PURE-TIN OVER NICKEL OR GOLD FLASH OVER NICKEL |
| 3 | DOWN SHELL | 1 | STAINLESS STEEL OR COPPER ALLOY | PURE-TIN OVER NICKEL OR GOLD FLASH OVER NICKEL |
| 2 | CONTACT | 40 30 | COPPER ALLOY | CONTACT AREA : Au(Si) ₂ OVER NICKEL SOLDERING AREA : GOLD FLASH OVER NICKEL |
| 1 | HOUSING | 1 | GLASS FILLED LCP | |

| PROJECTION | TOLERANCE UNLESS OTHERWISE SPECIFIED | | STARCONN 慶良電子股份有限公司 CHIEF LAND ELECTRONIC CO., LTD. | |
|-------------------|--------------------------------------|-------------|---|-------|
| | LINEAR | ANGLE | | |
| UNITS MM[INCH] | .0 ± 0.25 | X° REF ± 5' | TITLE CABLE CONNECTOR 0.4 PH ASSEMBLY(WIRE SEPARATE PILLAR) | |
| | .00 ± 0.15 | X' ± 2" | | |
| | .000 ± 0.10 | X'X' ± 1' | | |
| SCALE | DRAW | DATE | DWG NO. | REV. |
| 8:1 | DESIGN | 09-27-'10 | 107G40-XXXXXX-XX | 1A |
| SIZE | CHKD | 09-27-'10 | CAD NO. | SHEET |
| A3 | APPD. | 09-27-'10 | E10771-2 | 2/2 |