

尺寸	0-10mm	10-30mm	30-50mm	50-100mm
公差	±1.0mm	±1.0mm	±1.5mm	±1.2mm

专利设计, 实用新型专利号  
Patent No: ZL201420299310. 3

MARKS	MODIFICATION	QTY.	CHK. BY	DATE

直接插电线, 电线被锁紧, 简单可靠, 无需专业电焊工, 不会产生假焊, 过热损害等不良.  
Directly insert the wire, no need of welding. Reliable & no damage .

建议的电线规格:

Suggested cable type:

0.5mm平方 ~ 1.0 mm平方, 22 ~18AWG

电线末端处理方式:

Cable end style

A. 单股线, 末端剥线长度7.5-8.5mm, 不需浸锡

Single cable, stripped end 7.5-8.5mm

B. 多股绞合线, 末端剥线长度7.5-8.5mm, 末端浸锡处理, 浸锡厚度不宜多

Multi cables, Stripped end 7.5-8.5mm, Tin-dipped.

C. 多股绞合线, 末端剥线长度7.5-8.5mm, 末端打基板端子

NOTES:

1. Rating:

COC 6(3)A 250V AC T105

TVV 6(3)A 250V AC T105

CB 6(3)A 250V AC T105

ETL 6(3)A 125V AC T105

2. Circuit Diagram: 2P ON-OFF

3. Terminal Strength: ≥80N

4. Electrical life: ≥10000 cycles

5. Withstand Voltage: Withstand Voltage: 1500VAC 1min

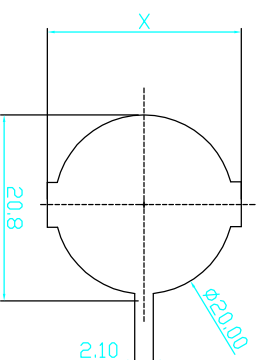
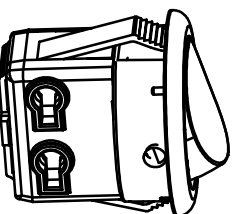
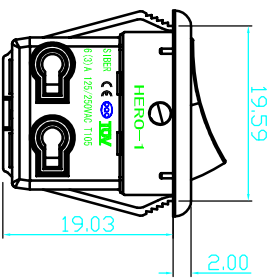
Terminals to Button: 3000VAC 1min

Leakage Current: 1mA

6. Current resistance: ≤50mΩ (initial)

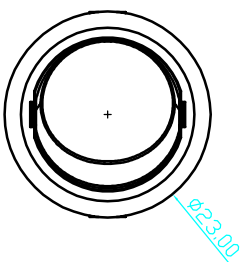
7. Insulation resistance: ≥100MΩ

8. Body Material: NYLON 66 94-V2



Panel hole size

Panel thickness	X
0.75-1.25	20.2
1.28-2.0	20.4
2.0-3.0	20.6



产品要求

1. 塑件表面应光滑平整, 无飞边、缩孔、花斑、裂痕、杂色、凹陷等缺陷.
2. 表面为细麻面, 参看样品.
3. 未注圆角为R0.2.
4. 未注尺寸参考三维模数.

产品名称	踏板开关	零部件图号	HERO-1	
零部件名称	外形图			材料 PA66
设计		版本 A	比例	FIT
审核		单位 mm	第 1 张	共 1 张
批准		施霸(中国)电器制品有限公司 STIBER (CHINA) ELECTRONIC MFG CO., LTD		