

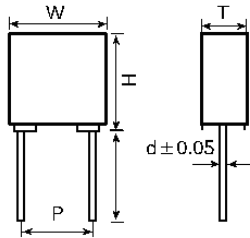


MPB(无线充电薄膜电容) series

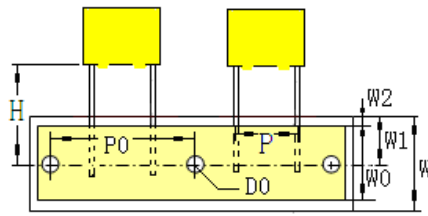
塑料外壳金属化聚丙烯膜电容器

Box-type Metallized polyester film capacitor

外形图 Outline Drawing

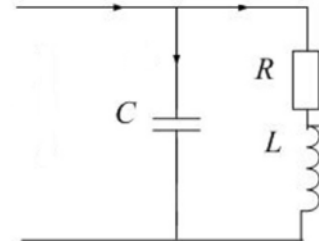


散装产品



编带产品

典型应用电路图(typical circuit)



特点

- 高频损耗小
- 内部温升小
- 阻燃环氧树脂包封(UL94V-0)
- 产品体积小, 便于安装

主要用途

- 广泛用于高频、直流、交流和脉冲电路中。
- 适用于手机无线充电谐振电路中。
- 适用于显示器 S 校正电路设计。
- 适用于点火器脉冲电路。

Features

- Low loss at high frequency
- Small inherent temperature rise
- Flame retardant epoxy resin powder coating(UL94V-0)
- Small size of product, easy to install

Typical application

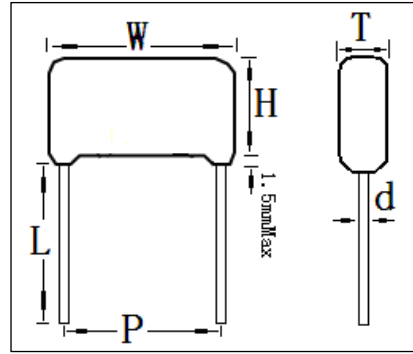
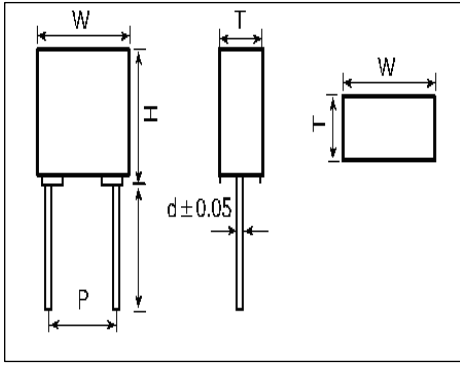
- Widely used in high frequency, DC, AC and pulse circuits
- Used in wireless charging resonance circuit of mobile phone.
- Specially designed for s-correction circuits of monitor
- Suitable for igniter pulse circuit

技术要求 Specifications

- 引用标准 (Reference Standard): GB/T7332 (IEC60384-2)
- 气候类别(Climatic Category): 40/100/21
- 额定温度(Rated Temperature): 85°C
- 工作温度范围(Operating Temperature Range): -40/+100°C
- 额定电压(Rated Voltage): 63V、100V、160V、250V、400V、630V
- 容量范围(Capacitance Range): 0.001uF ~1.5uF
- 容量偏差(Capacitance Tolerance): J (±5%)、K (±10%)、M (±20%)
- 耐电压(Testing Voltage): 1.6U_R (5s)
- 绝缘电阻(Insulation Resistance):

>0.33uF	U _R >100V	≥2500S (MΩ·uF)
	U _R ≤100V	≥1250S (MΩ·uF)
≤0.33uF	U _R >100V	≥7500MΩ
	U _R ≤100V	≥3750MΩ
- 损耗角正切(Dissipation Factor): ≤0.01 (1KHz 20°C)

■外形尺寸 Dimensions(mm)



N O .	静电 容量 (μf)	容量 偏差	额定 电压 (DC)	尺寸 (mm)			
				W \pm 0.5	H \pm 0.5	T \pm 0.5	P \pm 0.5
1	0.10	5%	100	7.2	6.5	2.5	5
2	0.15	5%	100	7.2	6.5	2.5	5
3	0.18	5%	100	7.2	6.5	2.5	5
4	0.20	5%	100	7.2	7.5	3.5	5
5	0.30	5%	100	7.2	7.5	3.5	5
6	0.33	5%	100	10	9	4	7.5
7	0.39	5%	100	10	10	5	7.5
8	0.40	5%	100	10	10	5	7.5
9	0.42	5%	100	12	11	5	7.5
10	0.47	5%	100	12	11	5	7.5

N O .	静电 容量 (μf)	容量 偏差	额定 电压 (DC)	尺寸 (mm)			
				W Max	H Max	T Max	P \pm 0.5
1	0.1	5%	400	10	8	4	7.5
2	0.15	5%	400	10	8.5	4	7.5
3	0.18	5%	400	10	9	4	7.5
4	0.20	5%	400	10	9	4	7.5
5	0.33	5%	400	10	10	5	7.5
6	0.39	5%	400	10	11	5	7.5
7	0.40	5%	400	10	11	5	7.5
8	0.40	5%	400	12	11	5	10
9	0.42	5%	400	12	11	5	10
10	0.47	5%	400	12	12	5	10