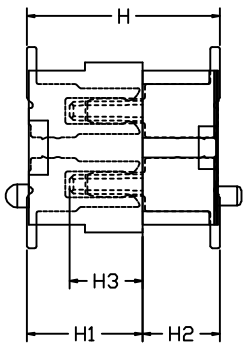


| High photos/throughs (H1) | The female seat height (H1) | The male seat height (H2) | Insertion height (H3) |
|---------------------------|-----------------------------|---------------------------|-----------------------|
| 3.5 | 2.5 | 1.0 | 1.9 |
| 4.0 | 3.0 | 1.0 | 1.9 |
| 4.5 | 3.5 | 1.0 | 1.9 |
| 5.0 | 4.0 | 1.0 | 1.9 |
| 5.5 | 4.5 | 1.0 | 1.9 |
| 6.0 | 4.0 | 2.0 | 1.9 |
| 6.5 | 4.5 | 2.0 | 1.9 |



ASSEMBLY

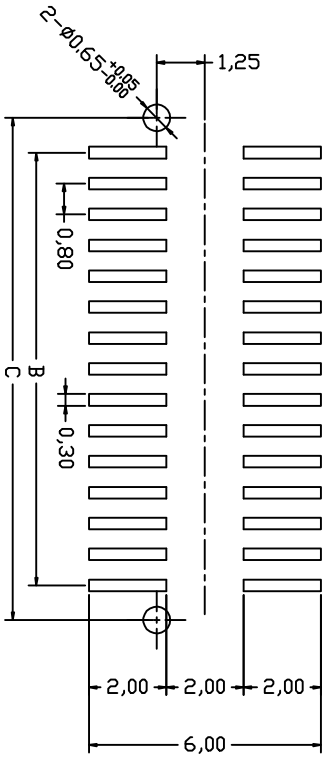
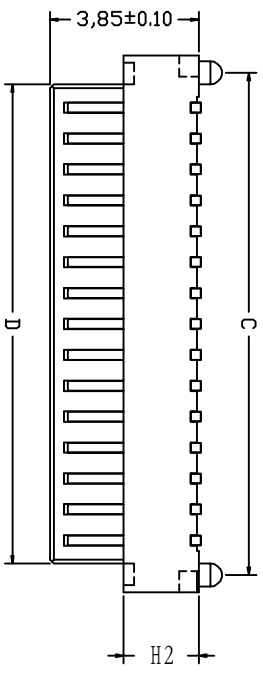
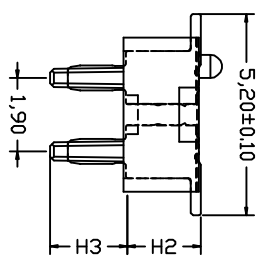
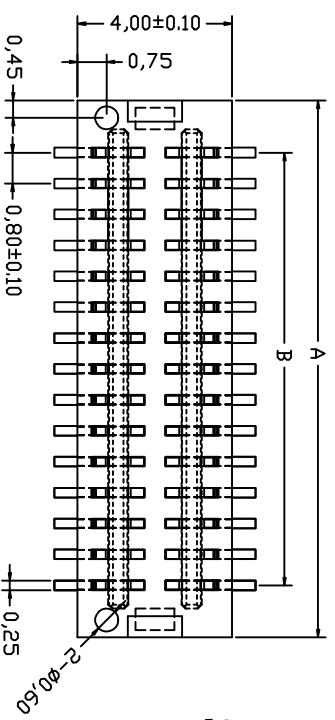
Ordering Information

S G -XX X XXX XX XX X X

PITCH 05-0.5mm F-Female NO. of pins 008-100pin
 08-0.8mm M-Male

The female or Male seat height 0.11 or H2
 10-10mm G22H Gold
 20-20mm G22H Gold
 30-30mm G45H Gold
 35-35mm G510H Gold
 40-40mm G615H Gold
 45-45mm G790H Gold

Contact Plating G=Gold finish
 G=With boss 1=With boss
 Colour 0=Black 1=Black



P.C.B PATTEN

Electrical:
 Vlotag Rating: 50V AC(rms)/DC
 Current Rating: 0.5A AC(rms)/DC
 Contact Resistance: 50mΩ Max
 Insulation Resistance: 100MΩ min
 Dielectric Withstanding Voltage: 200V
 AC r. m. s
 Operating Temperature: -30°C~+90°C
 Housing: High Temperature Plastic
 Material: PA9T
 Contact: phosphor Bronze, Gold Plating

| NO. of Contacts | Dimension (mm) | | | | |
|-----------------|----------------|--------|--------|--------|--------|
| | A±0.10 | B±0.10 | C±0.10 | D±0.10 | E±0.10 |
| 8 | 5.10 | 2.40 | 4.20 | 3.60 | |
| 10 | 5.90 | 3.20 | 5.00 | 4.40 | |
| 12 | 6.70 | 4.00 | 5.80 | 5.20 | |
| 14 | 7.50 | 4.80 | 6.60 | 6.00 | |
| 16 | 8.30 | 5.60 | 7.40 | 6.80 | |
| 18 | 9.10 | 6.40 | 8.20 | 7.60 | |
| 20 | 9.90 | 7.20 | 9.00 | 8.40 | |
| 22 | 10.70 | 8.00 | 9.80 | 9.20 | |
| 24 | 11.50 | 8.80 | 10.60 | 10.00 | |
| 26 | 12.30 | 9.60 | 11.40 | 10.80 | |
| 28 | 13.10 | 10.40 | 12.20 | 11.60 | |
| 30 | 13.90 | 11.20 | 13.00 | 12.40 | |
| 32 | 14.70 | 12.00 | 13.80 | 13.20 | |
| 34 | 15.50 | 12.80 | 14.60 | 14.00 | |
| 36 | 16.30 | 13.60 | 15.40 | 14.80 | |
| 38 | 17.10 | 14.40 | 16.20 | 15.60 | |
| 40 | 17.90 | 15.20 | 17.00 | 16.40 | |
| 42 | 18.70 | 16.00 | 17.80 | 17.20 | |
| 44 | 19.50 | 16.80 | 18.60 | 18.00 | |
| 46 | 20.30 | 17.60 | 19.40 | 18.80 | |
| 48 | 21.10 | 18.40 | 20.20 | 19.60 | |
| 50 | 21.90 | 19.20 | 21.00 | 20.40 | |
| 52 | 22.70 | 20.00 | 21.80 | 21.20 | |
| 54 | 23.50 | 20.80 | 22.60 | 22.00 | |
| 56 | 24.30 | 21.60 | 23.40 | 22.80 | |
| 58 | 25.10 | 22.40 | 24.20 | 23.60 | |
| 60 | 25.90 | 23.20 | 25.00 | 24.40 | |
| 62 | 26.70 | 24.00 | 25.80 | 25.20 | |
| 64 | 27.50 | 24.80 | 26.60 | 26.00 | |
| 66 | 28.30 | 25.60 | 27.40 | 26.80 | |
| 68 | 29.10 | 26.40 | 28.20 | 27.60 | |
| 70 | 29.90 | 27.20 | 29.00 | 28.40 | |
| 72 | 30.70 | 28.00 | 29.80 | 29.20 | |
| 74 | 31.50 | 28.80 | 30.60 | 30.00 | |
| 76 | 32.30 | 29.60 | 31.40 | 30.80 | |
| 78 | 33.10 | 30.40 | 32.20 | 31.60 | |
| 80 | 33.90 | 31.20 | 33.00 | 32.40 | |
| 82 | 34.70 | 32.00 | 33.80 | 33.20 | |
| 84 | 35.50 | 32.80 | 34.60 | 34.00 | |
| 86 | 36.30 | 33.60 | 35.40 | 34.80 | |
| 88 | 37.10 | 34.40 | 36.20 | 35.60 | |
| 90 | 37.90 | 35.20 | 37.00 | 36.40 | |
| 92 | 38.70 | 36.00 | 37.80 | 37.20 | |
| 94 | 39.50 | 36.80 | 38.60 | 38.00 | |
| 96 | 40.30 | 37.60 | 39.40 | 38.80 | |
| 98 | 41.10 | 38.40 | 40.20 | 39.60 | |
| 100 | 41.90 | 39.20 | 41.00 | 40.40 | |

| | | | |
|----|----------|------|-------------------------|
| 单位 | M M | 尺寸公差 | ±0.05 ±0.10 ±0.20 |
| 日期 | 14.08.30 | 角度公差 | ±1° |
| 比例 | 1:1 | 版本 | A |
| 绘制 | | 审核 | |
| 校对 | | 审核 | |
| 审核 | | 审核 | |

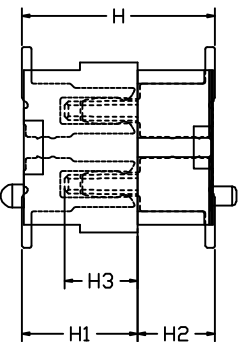
深圳市山谷道电子有限公司

电话: 0755-27759859
传真: 0755-27759850

| | |
|------|--------------------------------|
| 物料编号 | SG-08 M XXX XX XX X X |
| 品名 | 0.8mm BOARD TO BOARD 公差 双排 立式式 |
| 包装规格 | 卷带1000PCS/R |
| 图号 | XXXX01 |

| High photos/throughs (H1) | The female seat height (H1) | The male seat height (H2) | Insertion height (H3) |
|---------------------------|-----------------------------|---------------------------|-----------------------|
| 3.5 | 2.5 | 1.0 | 1.9 |
| 4.0 | 3.0 | 1.0 | 1.9 |
| 4.5 | 3.5 | 1.0 | 1.9 |
| 5.0 | 4.0 | 1.0 | 1.9 |
| 5.5 | 4.5 | 1.0 | 1.9 |
| 6.0 | 4.0 | 2.0 | 1.9 |
| 6.5 | 4.5 | 2.0 | 1.9 |

ASSEMBLY



Ordering Information

SG-XX X XXX XX XX X X

PTCH
05-0.5mm
08-0.8mm

F-Female
M-Male

NO. of pins
008-100pin

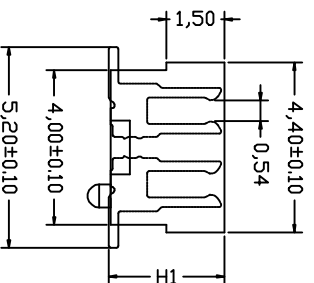
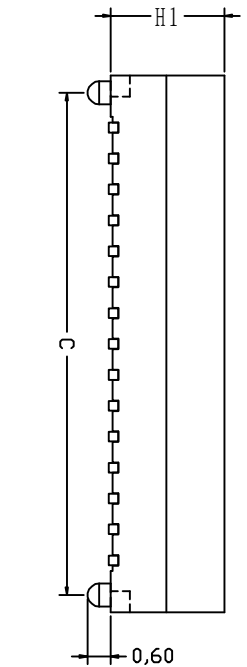
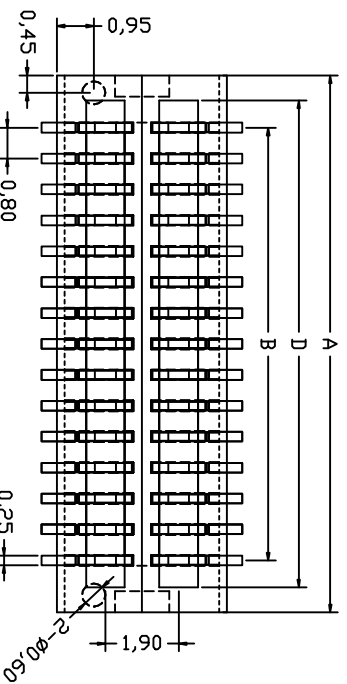
The female or Male seat height
0.11 or H2

10-10mm
20-20mm
30-30mm
35-35mm
40-40mm
45-45mm

BOSS
0-Without boss
1-With boss

COLOUR
0-18K
1-8K

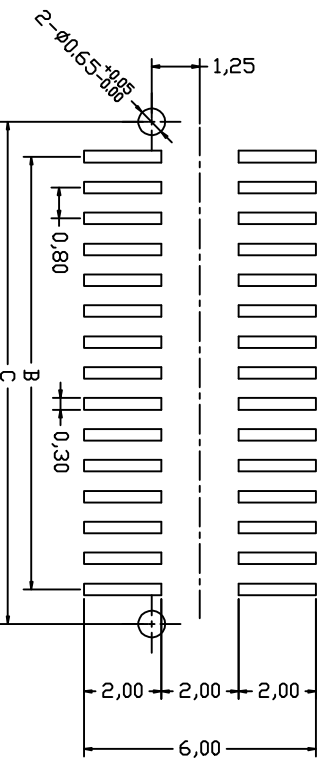
Contact Plating
G05Gold finish
G10ur Gold
G20ur Gold
G25ur Gold
G45ur Gold
G5510ur Gold
G6515ur Gold
G750ur Gold



Electrical:

Vlotag Rating:50V AC(rms)/DC
Current Rating:0.5A AC(rms)/DC
Contact Resistance:50mΩ Max
Insulation Resistance:100MΩ min
Dielectric Withstanding Voltage:200V
AC r. m. s
Operating Temperature:-30℃~+90℃
Material:High Temperature Plastic
Housing:High Temperature Plastic
UL94V-0
Terminal:Copper Alloy
Material:PA9T
Contact:phosphor Bronze, Gold Plating:

| NO. of Contacts | Dimension(mm) | | | |
|-----------------|---------------|--------|--------|--------|
| | A±0.10 | B±0.10 | C±0.10 | D±0.10 |
| 8 | 5.10 | 2.40 | 4.20 | 3.70 |
| A 10 | 5.90 | 3.20 | 5.00 | 4.50 |
| A 12 | 6.70 | 4.00 | 5.80 | 5.30 |
| A 14 | 7.50 | 4.80 | 6.60 | 6.10 |
| A 16 | 8.30 | 5.60 | 7.40 | 6.90 |
| A 18 | 9.10 | 6.40 | 8.20 | 7.70 |
| A 20 | 9.90 | 7.20 | 9.00 | 8.50 |
| A 22 | 10.70 | 8.00 | 9.80 | 9.30 |
| A 24 | 11.50 | 8.80 | 10.60 | 10.10 |
| A 26 | 12.30 | 9.60 | 11.40 | 10.90 |
| 28 | 13.10 | 10.40 | 12.20 | 11.70 |
| A 30 | 13.90 | 11.20 | 13.00 | 12.50 |
| A 32 | 14.70 | 12.00 | 13.80 | 13.30 |
| A 34 | 15.50 | 12.80 | 14.60 | 14.10 |
| A 36 | 16.30 | 13.60 | 15.40 | 14.90 |
| 38 | 17.10 | 14.40 | 16.20 | 15.70 |
| A 40 | 17.90 | 15.20 | 17.00 | 16.50 |
| A 42 | 18.70 | 16.00 | 17.80 | 17.30 |
| A 44 | 19.50 | 16.80 | 18.60 | 18.10 |
| A 46 | 20.30 | 17.60 | 19.40 | 18.90 |
| 48 | 21.10 | 18.40 | 20.20 | 19.70 |
| A 50 | 21.90 | 19.20 | 21.00 | 20.50 |
| 52 | 22.70 | 20.00 | 21.80 | 21.30 |
| 54 | 23.50 | 20.80 | 22.60 | 22.10 |
| 56 | 24.30 | 21.60 | 23.40 | 22.90 |
| 58 | 25.10 | 22.40 | 24.20 | 23.70 |
| A 60 | 25.90 | 23.20 | 25.00 | 24.50 |
| 62 | 26.70 | 24.00 | 25.80 | 25.30 |
| 64 | 27.50 | 24.80 | 26.60 | 26.10 |
| 66 | 28.30 | 25.60 | 27.40 | 26.90 |
| 68 | 29.10 | 26.40 | 28.20 | 27.70 |
| 70 | 29.90 | 27.20 | 29.00 | 28.50 |
| 72 | 30.70 | 28.00 | 29.80 | 29.30 |
| 74 | 31.50 | 28.80 | 30.60 | 30.10 |
| 76 | 32.30 | 29.60 | 31.40 | 30.90 |
| 78 | 33.10 | 30.40 | 32.20 | 31.70 |
| 80 | 33.90 | 31.20 | 33.00 | 32.50 |
| 82 | 34.70 | 32.00 | 33.80 | 33.30 |
| 84 | 35.50 | 32.80 | 34.60 | 34.10 |
| 86 | 36.30 | 33.60 | 35.40 | 34.90 |
| 88 | 37.10 | 34.40 | 36.20 | 35.70 |
| 90 | 37.90 | 35.20 | 37.00 | 36.50 |
| 92 | 38.70 | 36.00 | 37.80 | 37.30 |
| 94 | 39.50 | 36.80 | 38.60 | 38.10 |
| 96 | 40.30 | 37.60 | 39.40 | 38.90 |
| 98 | 41.10 | 38.40 | 40.20 | 39.70 |
| 100 | 41.90 | 39.20 | 41.00 | 40.50 |



PCB PATTEN

| 单位 | M | M | 尺寸公差 | |
|----|----------|-------|-------|--|
| 日期 | 14.08.30 | 0 0 0 | ±0.05 | |
| 比例 | 1:1 | 角度公差 | ±0.10 | |
| 绘制 | | 0 0 | ±0.20 | |
| 校对 | | 版本 | ±1' | |
| 审核 | | 视角 | ±0.5' | |
| | | 物料编号 | | |
| | | 品名 | | |
| | | 包装规格 | | |

深圳市山谷道电子有限公司

电话: 0755-27759859

传真: 0755-27759850

SG-08 F XXX XX XX X X

0.8mm BOARD TO BOARD 母座 双插 立式式

物料编号: SG-08 F XXX XX XX X X
品名: 0.8mm BOARD TO BOARD 母座 双插 立式式
包装规格: 卷带/000PCS/R
图号: XCD01