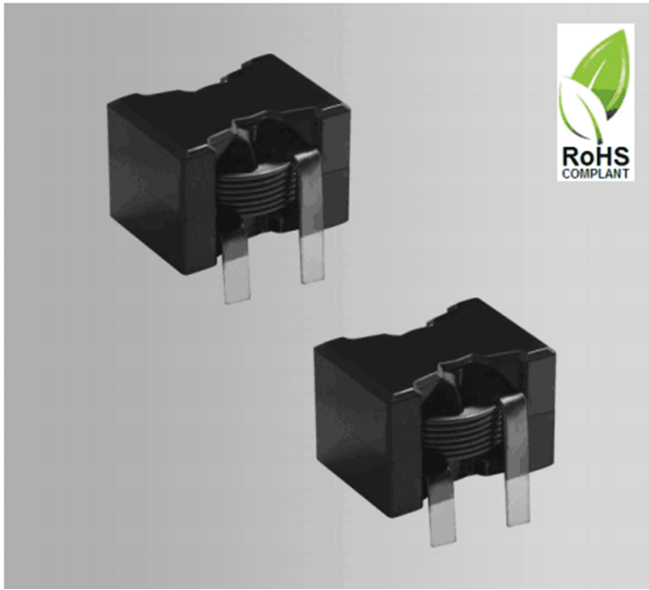




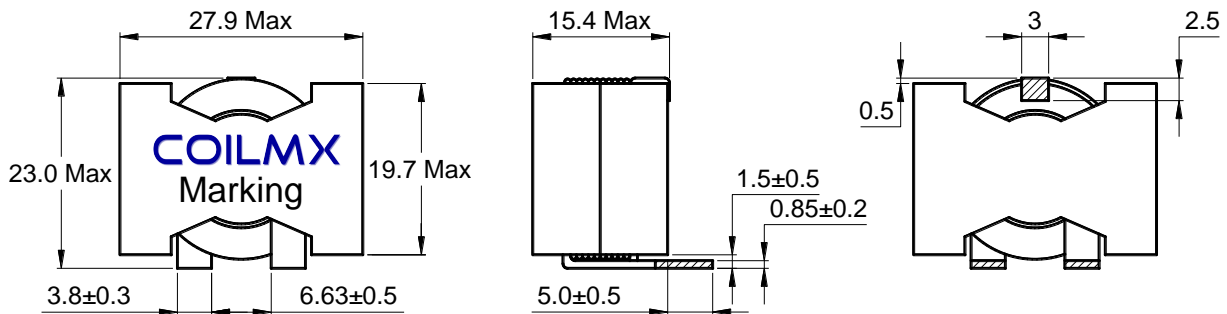
High Current Power Inductor - MTQ2915A Series



Outline: 产品概要

- Assemblage design, sturdy structure.
组立式设计，结构坚固。
- High inductance, high current, low magnetic loss, low ESR, small parasitic capacitance.
高电感值，大电流，低磁损，低阻抗，寄生电容小。
- Flat wire winding, achieve a low D.C. Resistance.
扁平线绕组，实现极低的直流电阻。
- Temperature rise current and saturation current is less influenced by environment.
温升电流及饱和电流受环境条件影响小。
- Operating temperature : -40°C ~ +125°C
(Including coil's temperature rise)
工作温度：-40°C ~ +125°C (包含线圈发热)

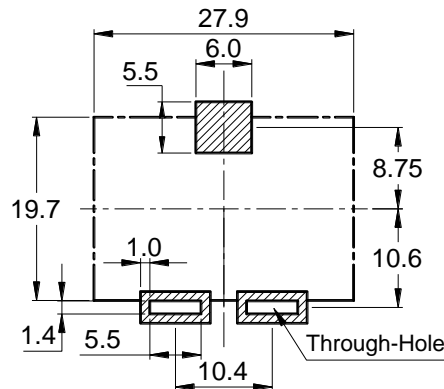
1 Appearance and dimensions (mm) 外形尺寸



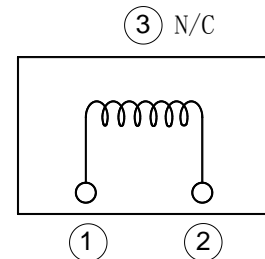
2 Marking 印字标识



3 Reference land pattern (mm) 参考基板尺寸



4 Schematic 原理图





High Current Power Inductor - MTQ2915A Series

5 Electrical characteristics

电气特性

Part No. 品名	Inductance (μH) 电感值 ※1 ±20%	D.C.R. (mΩ) 直流电阻		Saturation current (A) 饱和电流 ※2 Typical	Temperature rise current (A) 温升电流 ※3 Typical
		Typical	Max		
MTQ2915A-1R5M	1.50	1.60	1.76	100	30.0
MTQ2915A-2R2M	2.20	1.60	1.76	84.0	30.0
MTQ2915A-3R3M	3.30	1.60	1.76	54.0	30.0
MTQ2915A-4R7M	4.70	1.60	1.76	36.9	30.0
MTQ2915A-6R8M	6.80	1.60	1.76	26.0	30.0
MTQ2915A-100M	10.0	1.60	1.76	16.2	30.0
MTQ2915A-150M	15.0	1.60	1.76	11.0	30.0
MTQ2915A-220M	22.0	1.60	1.76	9.00	30.0
MTQ2915A-330M	33.0	1.60	1.76	2.60	30.0

■ All data is tested based on 25°C ambient temperature.
所有数据基于环境温度 25°C条件下测试。

※1 Inductance measure condition at 100kHz, 0.1V.
电感测试条件为 100kHz, 0.1V。

※2 Saturation current: the actual value of DC current when the inductance decrease 20% of its initial value.
饱和电流: 电感值下降其初始值的 20%时所加载的实际直流电流值。

※3 Temperature rise current: the actual value of DC current when the temperature rise is ΔT40°C(Ta=25°C).
温升电流: 使产品温度上升到 ΔT40°C时所加载的实际直流电流值(Ta=25°C)。

※ Special remind: Circuit design, component placement, PWB size and thickness, cooling system and etc. all will affect the product temperature. Please verify the product temperature in the final application.
特别提醒: 线路设计, 组件布局, 印刷电路板(PWB)尺寸及厚度, 散热系统等均会影响产品温度。
请务必在最终应用时, 验证产品发热状况。



High Current Power Inductor - MTQ2915A Series

6 Saturation current VS temperature rise current curve

饱和电流 VS 温升电流曲线

