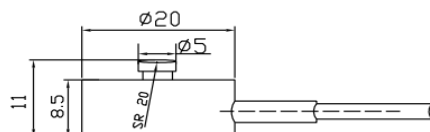
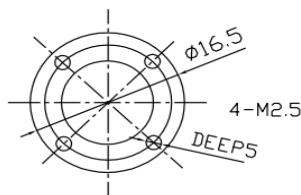


S23



◆ 尺寸及量程 / Size and Capacity



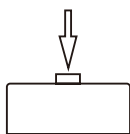
量程 / Capacity	材料 / Material	重量 / Weight
5/10/20/50/100/200/500/ 1000/1500/2000kg	不锈钢 / Stainless Steel	0.1kg

注：出线方式可选压线螺母，Φ 2 x 1500 mm，IP67。
Note: The outline can be pressing nut Φ 2 x 1500 mm, IP67.

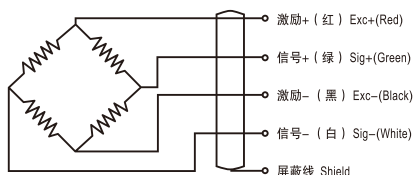
◆ 特点和用途 / Features & Applications

- 外型小巧,高度低, 变形量小
- 不锈钢材料
- 适用于各种小空间的测力, 广泛应用于工业、研发等领域的测量和控制。
- Small size, low profile, small deflection
- Made of stainless steel.
- Suitable for force measurement in limited spaces. Widely used for industrial measurement and control, R&D and other applications.

◆ 受力方式 / Load Direction



◆ 接线图 / Schematic Wiring Diagram



注：屏蔽线不与弹性体相连。
Note: Cable shield is not connected to the body.

◆ 技术参数 / Technical Parameters

参数	Specifications	技术指标 / Technique
输出灵敏度	Rated output	1.0±10% mV / V
零点输出	Zero balance	± 2% F.S.
非线性	Non-linearity	0.25% F.S.
滞后	Hysteresis	0.20% F.S.
重复性	Repeatability	0.20% F.S.
蠕变(30分钟)	Creep (30min)	0.20% F.S.
温度灵敏度漂移	Temp. effect on output	0.05% F.S. / 10°C
零点温度漂移	Temp. effect on zero	0.05% F.S. / 10°C
输入电阻	Input impedance	400 ± 30Ω
输出电阻	Output impedance	350 ± 5Ω
绝缘电阻	Insulation	≥ 5000MΩ / 100VDC
激励电压	Recommended excitation	10V
最大激励电压	Maximum excitation	15V
温度补偿范围	Compensated temp. range	-10~60°C
工作温度范围	Operation temp. range	-20~80°C
安全超载	Safe overload	150% F.S.
极限超载	Ultimate overload	200% F.S.
电缆线尺寸	Cable size	φ 3×4000 mm
防护等级	Protection class	IP66
连接方式	Cable color code	Input: Red(+) Black(-);
		Output: Green(+) White(-);
		输入: 红 (+) 黑 (-);
		输出: 绿 (+) 白 (-)