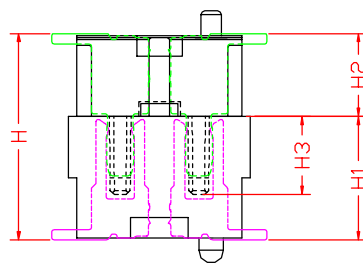


High photosynthesis (H)	The female seat height (H1)	The male seat height (H2)	Insertion height (H3)
3.0	2.2	0.8	1.6
3.5	2.2	1.3	1.6
4.0	3.0	1.0	1.9
4.5	3.5	1.0	1.9
5.0	3.0/4.0	2.0/1.0	1.9
5.5	3.5/4.5	2.0/1.0	1.9
6.0	4.0	2.0	1.9
6.5	4.5	2.0	1.9

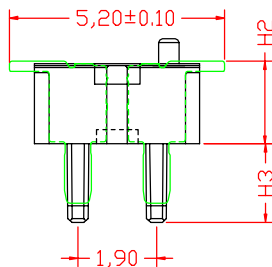
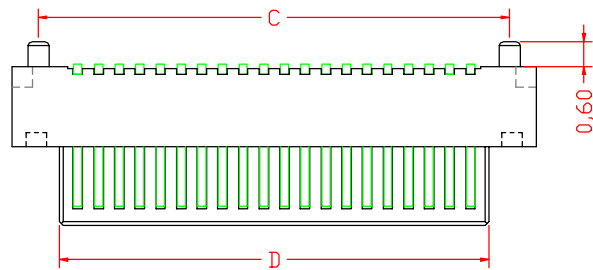
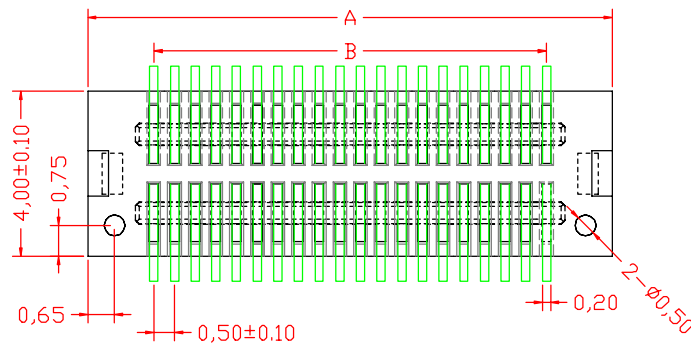
ASSEMBLY



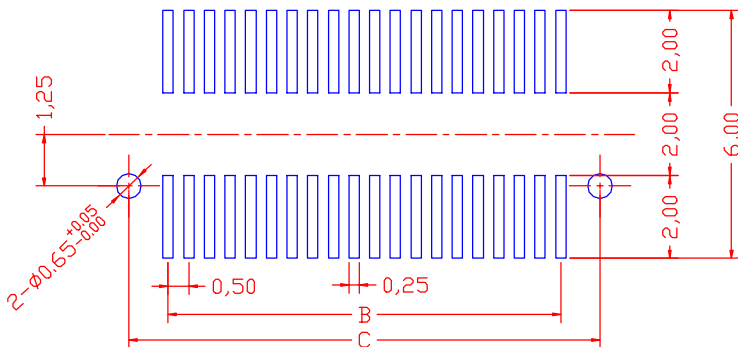
Ordering Information

SGDBM-05- XXXP- HXX

F=Female PITCH M=Male NO. of pins The female or Male seat height (H1 or H2)
 05=0.5mm 008=100pin 10=1.0mm
 20=2.0mm 30=3.5mm 40=4.0mm
 08=0.8mm 45=4.5mm



Electrical:
 Vlotag Rating:50V AC(rms)/DC
 Current Rating:0.5A AC(rms)/DC
 Contact Resistance:50mΩ Max
 Insulation Resistance:100MΩ min
 Dielectric Withstanding Voltage:200V AC r. m. s
 Operting Temperature:-55°C~+85°C
 Materirls
 Housing:High Temperature Plastic
 UL94V-0
 Terminal:Copper Alloy
 Material:PA9T
 Contact:phosphor Bronae, Gold Plating;



P. C. B PATTEN

NO. of Contacts	Dimension (mm)			
	A±0.10	B±0.10	C±0.10	D±0.10
8	4.70	1.50	3.40	2.40
10	5.20	2.00	3.90	2.90
12	5.70	2.50	4.40	3.40
14	6.20	3.00	4.90	3.90
16	6.70	3.50	5.40	4.40
18	7.20	4.00	5.90	4.90
20	7.70	4.50	6.40	5.40
22	8.20	5.00	6.90	5.90
24	8.70	5.50	7.40	6.40
26	9.20	6.00	7.90	6.90
28	9.70	6.50	8.40	7.40
30	10.20	7.00	8.90	7.90
32	10.70	7.50	9.40	8.40
34	11.20	8.00	9.90	8.90
36	11.70	8.50	10.40	9.40
38	12.20	9.00	10.90	9.90
40	12.70	9.50	11.40	10.40
42	13.20	10.00	11.90	10.90
44	13.70	10.50	12.40	11.40
46	14.20	11.00	12.90	11.90
48	14.70	11.50	13.40	12.40
50	15.20	12.00	13.90	12.90
52	15.70	12.50	14.40	13.40
54	16.20	13.00	14.90	13.90
56	16.70	13.50	15.40	14.40
58	17.20	14.00	15.90	14.90
60	17.70	14.50	16.40	15.40
62	18.20	15.00	16.90	15.90
64	18.70	15.50	17.40	16.40
66	19.20	16.00	17.90	16.90
68	19.70	16.50	18.40	17.40
70	20.20	17.00	18.90	17.90
72	20.70	17.50	19.40	18.40
74	21.20	18.00	19.90	18.90
76	21.70	18.50	20.40	19.40
78	22.20	19.00	20.90	19.90
80	22.70	19.50	21.40	20.40
82	23.20	20.00	21.90	20.90
84	23.70	20.50	22.40	21.40
86	24.20	21.00	22.90	21.90
88	24.70	21.50	23.40	22.40
90	25.20	22.00	23.90	22.90
92	25.70	22.50	24.40	23.40
94	26.20	23.00	24.90	23.90
96	26.70	23.50	25.40	24.40
98	27.20	24.00	25.90	24.90
100	27.70	24.50	26.40	25.40

单位	M M	尺寸公差	
日期	14.08.30	.0 0 0	±0.05
比例	1:1	.0 0	±0.10
		.0	±0.20
绘制		角度公差	
校对		.0	±1°
审核		.0 0	±0.5°
		视角	⊙

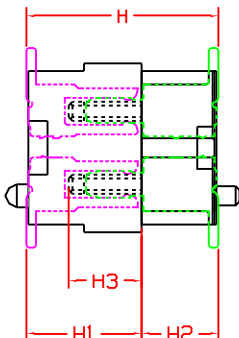
深圳市山谷道电子有限公司

电话: 0755-27759859

传真: 0755-27759850

物料编号	SGDBM-05-XXXP-HXX		
品名	0.5mm BOARD TO BOARD 公座 双槽 立贴式		
包装规格	卷带1000PCS/R	图号	xx001

High photosynthesis (H)	The female seat height (H1)	The male seat height (H2)	Insertion height (H3)
3.0	2.2	0.8	1.6
3.5	2.2	1.3	1.6
4.0	3.0	1.0	1.9
4.5	3.5	1.0	1.9
5.0	3.0/4.0	2.0/1.0	1.9
5.5	3.5/4.5	2.0/1.0	1.9
6.0	4.0	2.0	1.9
6.5	4.5	2.0	1.9



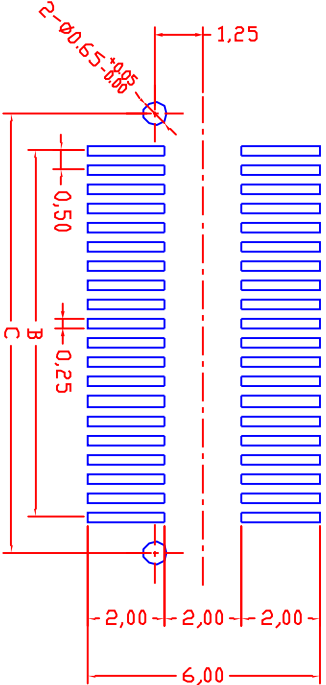
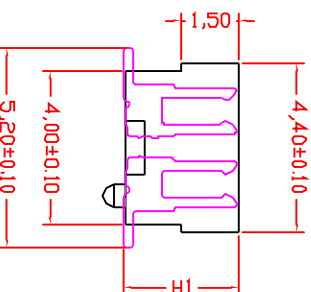
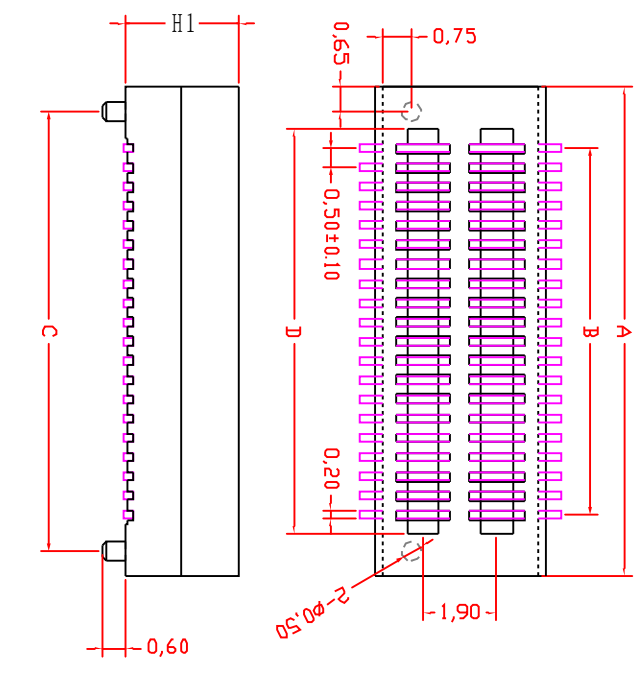
ASSEMBLY

Ordering Information

SGDBF 05-XXXX-HXX

F=Female PITCH
M=Male 05=05mm 008-100pin

The female or Male seat height (H1 or H2)
1.0=10mm
2.0=20mm
3.0=30mm
3.5=35mm
4.0=40mm
4.5=45mm



Electrical:
Voltage Rating: 50V AC (rms)/DC
Current Rating: 0.5A AC (rms)/DC
Contact Resistance: 50mΩ Max
Insulation Resistance: 100 MΩ min
Dielectric Withstanding Voltage: 200V
AC r. m s
Operating Temperature: -55°C ~ +85°C
Materials
Housing: High Temperature Plastic
UL94V-0
Terminal: Copper Alloy
Material: PA9T
Contact: phosphor Bronze, Gold Plating ;

NO. of Contacts	Dimension (mm)			
	A±0.10	B±0.10	C±0.10	D±0.10
8	4.70	1.50	3.40	2.48
10	5.20	2.00	3.90	2.98
12	5.70	2.50	4.40	3.48
14	6.20	3.00	4.90	3.98
16	6.70	3.50	5.40	4.48
18	7.20	4.00	5.90	4.98
20	7.70	4.50	6.40	5.48
22	8.20	5.00	6.90	5.98
24	8.70	5.50	7.40	6.48
26	9.20	6.00	7.90	6.98
28	9.70	6.50	8.40	7.48
30	10.20	7.00	8.90	7.98
32	10.70	7.50	9.40	8.48
34	11.20	8.00	9.90	8.98
36	11.70	8.50	10.40	9.48
38	12.20	9.00	10.90	9.98
40	12.70	9.50	11.40	10.48
42	13.20	10.00	11.90	10.98
44	13.70	10.50	12.40	11.48
46	14.20	11.00	12.90	11.98
48	14.70	11.50	13.40	12.48
50	15.20	12.00	13.90	12.98
52	15.70	12.50	14.40	13.48
54	16.20	13.00	14.90	13.98
56	16.70	13.50	15.40	14.48
58	17.20	14.00	15.90	14.98
60	17.70	14.50	16.40	15.48
62	18.20	15.00	16.90	15.98
64	18.70	15.50	17.40	16.48
66	19.20	16.00	17.90	16.98
68	19.70	16.50	18.40	17.48
70	20.20	17.00	18.90	17.98
72	20.70	17.50	19.40	18.48
74	21.20	18.00	19.90	18.98
76	21.70	18.50	20.40	19.48
78	22.20	19.00	20.90	19.98
80	22.70	19.50	21.40	20.48
82	23.20	20.00	21.90	20.98
84	23.70	20.50	22.40	21.48
86	24.20	21.00	22.90	21.98
88	24.70	21.50	23.40	22.48
90	25.20	22.00	23.90	22.98
92	25.70	22.50	24.40	23.48
94	26.20	23.00	24.90	23.98
96	26.70	23.50	25.40	24.48
98	27.20	24.00	25.90	24.98
100	27.70	24.50	26.40	25.48

深圳市山谷道电子有限公司

电话: 0755-27759859
传真: 0755-27759850

物料编号 SGDBF-05-XXXX-HXX

品名 0.5mm BOARD TO BOARD 母座 双槽 立贴式

包装规格 卷带1000PCS/R 图号 xx001

单位	M	M	尺寸公差	
日期	14.08.30	00	D 0.05	±0.10
比例	1:1	00	角度公差	±0.20
绘制		00		±0.5
校对		00	版本	A
审核			视角	