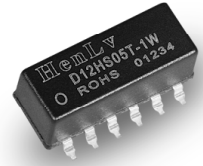


D XX H S (D) XX T- XW

① ② ③ ④ ⑤ ⑥ ⑦



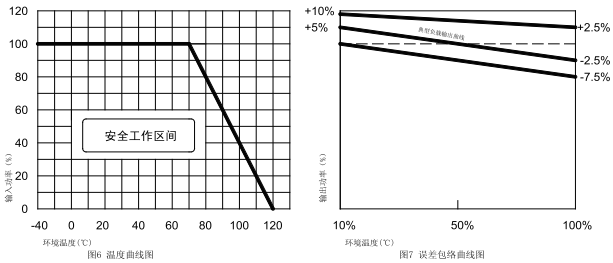
产品概述

DXXHS (D) XXT-XW系列产品是我公司研发的最新系列产品,目的是为了给客户设备提供一个安全稳定的输入电压。为了降低输入对输出的干扰,产品本身提供了2 K V的隔离耐压值,保证客户在任何使用环境下都能做到输入对输出干扰最小。

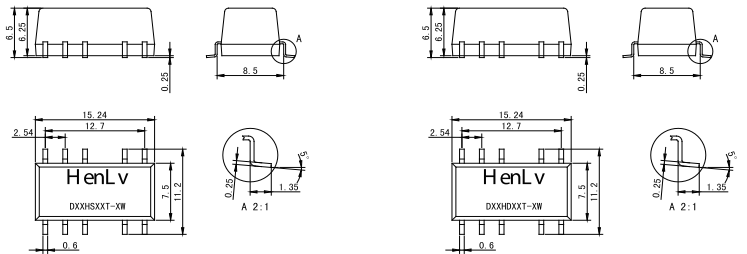
RoHS
COMPLINAT

型号	输入电压 (V)	输出电压 (V±2%)	满载输出电流 (mA)	效率	重量 (g) ±3	封装	认证
D 05HS3.3T-1W	+5VDC ±5%	3.3VDC	909	≥75%	13	SMD	RoHS
D 05HS05T-1W		5VDC	600	≥75%	13	SMD	
D05HS09T-1W		9VDC	330	≥78%	13	SMD	
D05HS12T-1W		12VDC	250	≥78%	13	SMD	
D05HS15T-1W		15VDC	200	≥78%	13	SMD	
D05HS24T-1W		24VDC	125	≥80%	13	SMD	
D09HS3.3T-1W	+9VDC ±5%	3.3VDC	909	≥75%	13	SMD	
D 09HS05T-1W		5VDC	600	≥75%	13	SMD	
D09HS09T-1W		9VDC	330	≥78%	13	SMD	
D09HS12T-1W		12VDC	250	≥78%	13	SMD	
D09HS15T-1W		15VDC	200	≥78%	13	SMD	
D09HS24T-1W		24VDC	125	≥80%	13	SMD	
D 12HS3.3T-1W	+12VDC ±5%	3.3VDC	909	≥75%	13	SMD	
D 12HS05T-1W		5VDC	600	≥75%	13	SMD	
D12HS09T-1W		9VDC	330	≥78%	13	SMD	
D12HS12T-1W		12VDC	250	≥78%	13	SMD	
D12HS15T-1W		15VDC	200	≥78%	13	SMD	
D12HS24T-1W		24VDC	125	≥80%	13	SMD	
D 15HS3.3T-1W	+15VDC ±5%	3.3VDC	909	≥75%	13	SMD	
D 15HS05T-1W		5VDC	600	≥80%	13	SMD	
D15HS09T-1W		9VDC	330	≥80%	13	SMD	
D15HS12T-1W		12VDC	250	≥82%	13	SMD	
D15HS15T-1W		15VDC	200	≥82%	13	SMD	
D15HS24T-1W		24VDC	125	≥82%	13	SMD	
D 24HS3.3T-1W	+24VDC ±5%	3.3VDC	909	≥75%	13	SMD	
D 24HS05T-1W		5VDC	600	≥80%	13	SMD	
D24HS09T-1W		9VDC	330	≥80%	13	SMD	
D24HS12T-1W		12VDC	250	≥82%	13	SMD	
D24HS15T-1W		15VDC	200	≥82%	13	SMD	
D24HS24T-1W		24VDC	125	≥82%	13	SMD	
D 05HD3.3T-1W	+5VDC ±5%	±3.3VDC	±151	≥75%	13	SMD	
D 05HD05T-1W		±5VDC	±100	≥75%	13	SMD	
D05HD09T-1W		±9VDC	±55	≥78%	13	SMD	
D05HD12T-1W		±12VDC	±41.6	≥78%	13	SMD	
D05HD15T-1W		±15VDC	±33.3	≥78%	13	SMD	
D05HD24T-1W		±24VDC	±20.8	≥80%	13	SMD	
D09HD3.3T-1W	+9VDC ±5%	3.3VDC	±151	≥75%	13	SMD	
D 09HD05T-1W		5VDC	±100	≥75%	13	SMD	
D09HD09T-1W		9VDC	±55	≥78%	13	SMD	
D09HD12T-1W		12VDC	±41.6	≥78%	13	SMD	
D09HD15T-1W		15VDC	±33.3	≥78%	13	SMD	
D09HD24T-1W		24VDC	±20.8	≥80%	13	SMD	
D 12HD3.3T-1W	+12VDC ±5%	3.3VDC	±151	≥75%	13	SMD	
D 12HD05T-1W		5VDC	±100	≥75%	13	SMD	
D12HD09T-1W		9VDC	±55	≥78%	13	SMD	
D12HD12T-1W		12VDC	±41.6	≥78%	13	SMD	
D12HD15T-1W		15VDC	±33.3	≥78%	13	SMD	
D12HD24T-1W		24VDC	±20.8	≥80%	13	SMD	
D 15HD3.3T-1W	+15VDC ±5%	3.3VDC	±151	≥75%	13	SMD	
D 15HD05T-1W		5VDC	±100	≥80%	13	SMD	
D15HD09T-1W		9VDC	±55	≥80%	13	SMD	
D15HD12T-1W		12VDC	±41.6	≥82%	13	SMD	
D15HD15T-1W		15VDC	±33.3	≥82%	13	SMD	
D15HD24T-1W		24VDC	±20.8	≥82%	13	SMD	
D 24HD3.3T-1W	+24VDC ±5%	3.3VDC	±151	≥75%	13	SMD	
D 24HD05T-1W		5VDC	±100	≥80%	13	SMD	
D24HD09T-1W		9VDC	±55	≥80%	13	SMD	
D24HD12T-1W		12VDC	±41.6	≥82%	13	SMD	
D24HD15T-1W		15VDC	±33.3	≥82%	13	SMD	
D24HD24T-1W		24VDC	±20.8	≥82%	13	SMD	

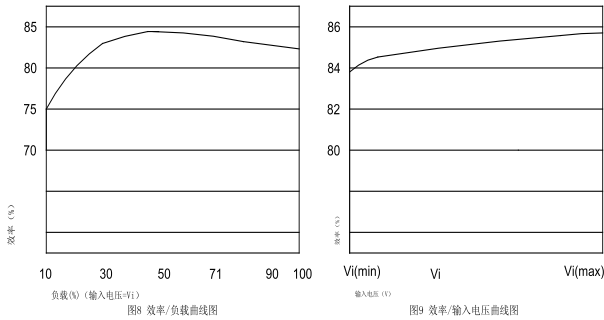
温度曲线图



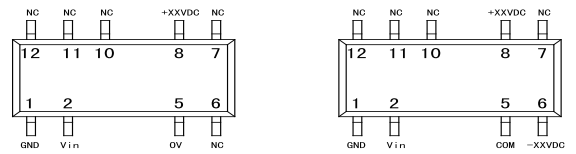
外壳尺寸及引脚功能



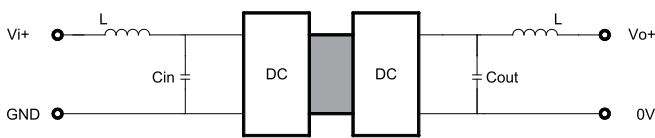
效率曲线图



引脚应符合下图的规定

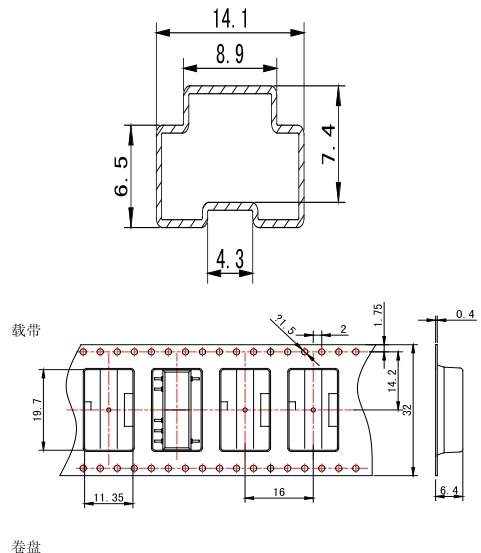


典型应用



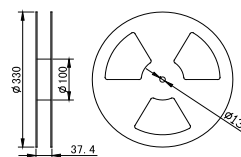
滤波：在一些对噪声和纹波敏感的电路中，可在DC/DC输入端和输出端外接滤波电容，降低纹波对系统的影响，但滤波电容的取值要适当，若电容太大，很可能造成启动问题，对于每一路输出，在确保安全可靠工作的条件下，其滤波电容的最大容值可以参考外接电容表，为了获得非常低的纹波，可在DC/DC转换器输入输出端接一个“LC”滤波网络，这样滤波的效果会更好，同时应注意到电感值的大小及“LC”滤波网络其自身的频率应于DC/DC模块电源的频率错开，避免相互干扰

包装



参数如下

输入电压 (Vi+)	输入电容Cin	输出电压 (Vout)	输出电容Cout
5V	1μF	3.3	4.7μF
9V	1μF	5	4.7μF
12V	4.7μF	9	2.2μF
15V	2.2μF	12	1μF
24V	1μF	15	0.47μF
48V	1μF	24	0.47μF
-	-	48	0.47μF



本系列模块采用防静电电子产品包装管包装
注：1，单位均为mm
2，模块应贮存在环境温度为-25℃ ~ 125℃、相对湿度不大于80%，
3，周围环境无酸性、碱性及其它有害的气体的库房中
4，所有定电压产品负载功率必须在10%以上