

Z80-H450.03 S5W2

气动式自动换刀架

Pneumatic Taper Change

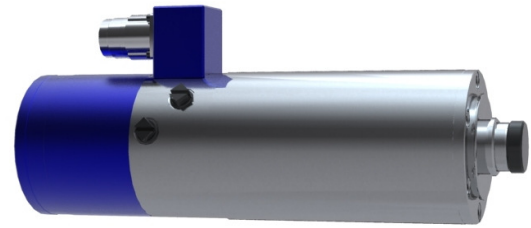
高速铣削，磨削，钻孔，雕刻主轴

HF-Spindle for high-speed milling, -grinding, -drilling, -engraving

技术说明:

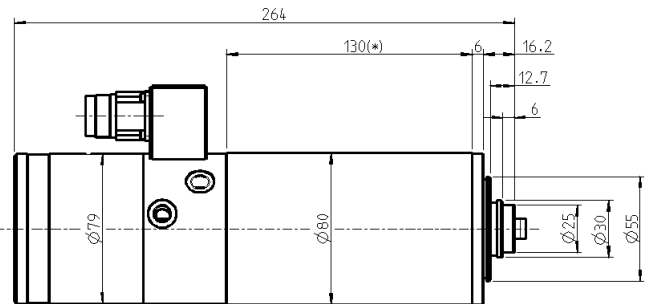
Technical Specifications:

陶瓷球混合轴承:		2
Ceramic hybrid ball bearing (pcs):		2
永久润滑:		免维护
Lifetime lubricated:		maintenance free
额定输出功率:	S1-100%	1.8 kW
Rated power:	S6-60%	2.1 kW
	Pmax./5s	2.1 kW
电压:		211 V
Voltage:		211 V
电流:	S1-100%	7.5 A
Current:	S6-60%	8.7 A
	Pmax./5s	8.9 A
频率:		1 667 HZ
Frequency:		1 667 HZ
极对数:		2
Motor poles (pairs):		2
额定转速:		50 000 min. ⁻¹
Rated rotation speed:		50 000 min. ⁻¹
速度侦测:		传感器
Speed monitoring:		Transmitter
马达保护: 马达温度保护装置		PTC
Motor protection: 马达温度保护装置		PTC
主轴外径:		80 mm
Housing diameter:		80 mm
冷却系统:		液体冷却
Cooling system:		liquid cooled
空气轴封		
Sealing air		
锥体清洗		
Taper cleaning		
刀具更换:		气动, HSK-E 25
Tool change:		pneumatic, HSK-E 25
刀具锥度监控:		感应
Tool change monitoring:		inductive
1 位置:		夹紧
1 position:		clamped
刀具挟持范围: 最大		10 mm
Clamping range up to:		10 mm
右转		
Clockwise		
联结器接头:		9 极金属
Coupler plug:		9 pin metal
重量:		~ 6 kg
Weight:		~ 6 kg
内部锥体径跳:		< 1 μ
Inner taper run out:		< 1 μ



(设计样例)
(Example of design)

尺寸: Dimensions:



功率、扭矩和速度图表: Performance Diagram:

功率测定基于内部实验台。
Measurement of power is funded by in-house testing.

