



OUTDOOR & TACTICAL SYSTEMS

FLIR

The World's **Sixth Sense**

ARMASIGHT
BY FLIR

CONTENT

THERMAL MONOCULARS

Scout TK	7
Scout II	7
Scout III	7
LS-X	8
LS-XR	8
Prometheus C	9
Prometheus	10
Prometheus Pro	11

THERMAL BI-OCULARS

Command	12
Command Pro	13

THERMAL RIFLESCOPIES

ThermoSight RS	14
Predator	15
Zeus	15
Zeus PRO	16

THERMAL CLIP-ONS

Apollo	17
Apollo Pro	18
IRIS-W HMD	19
AMRF-2200	20

THERMAL SPECIFICATIONS

NIGHT VISION MONOCULARS

Avenger 10x	25
Spark	26
Spark-G	26
Sirius	27
N-14	28
PVS-14	30

NIGHT VISION GOGGLES

Nyx-7	31
Nyx-7 PRO	32
PVS-7	33
N-15	34

NIGHT VISION BINOCULARS

Eagle	35
Discovery	36
Janus	38

NIGHT VISION RIFLESCOPIES

Vampire	39
Vulcan	40
Nemesis	42
Drone PRO	43

NIGHT VISION CLIP-ONS

CO-Mini	44
CO-X	45
CO-LR	46
CO-LR LRF	47
CO-XLR LRF	48
IR850-XLR	49
MS18000	50

NIGHT VISION SPECIFICATIONS

DIRECT VIEW AND LASER SYSTEMS

AIM PRO	55
AIM PRO-L	55
MCS	56
Drakos	57
T-MAIM	58
8x36	59
8x30C	59
7x50	59



EXPORT INFORMATION



The FLIR products are subject to the International Traffic in Arms Regulations (ITAR). The "Use" of any ITAR-controlled products requires that prior authorization be obtained from the U.S. Department of State to allow non-U.S. persons and affiliates to use these FLIR products.

*Equipment described herein may require US Government authorization for export purposes. Diversion contrary to US law is prohibited.

©2017 FLIR Systems, Inc. Specifications are subject to change without notice, check our website: www.flir.com.



The World's **Sixth Sense**[®]

FLIR's Outdoor and Tactical Systems (OTS) line is dedicated to bringing you the most complete line-up of consumer outdoor and tactical vision products in the world. The unquestioned world leader in thermal and night vision (I²) sights and scopes, the FLIR OTS product portfolio brings outdoorsmen and women a selection of such depth and quality it cannot be matched anywhere in the industry.

With a nearly 50-year heritage of bringing combat-proven nighttime vision solutions to the front lines, FLIR has the expertise and commitment to provide the best sights and scopes to outdoorsmen and shooting professionals alike. Our Field Tested, Field Proven models lets FLIR bring the latest technology to market faster and more affordably than anyone else.



THERMAL IMAGING TECHNOLOGIES

Thermal imagers detect and display tiny differences in the invisible heat energy that is emitted from all objects, living or inanimate. By capturing this wavelength of energy, FLIR Thermal imagers build a picture of your surroundings based on the heat, not light, which delivers numerous performance benefits for hunters, outdoorsmen and tactical operators.

Based on FLIR's cutting-edge and field-tested longwave infrared (LWIR) camera cores, these thermal scopes and sights show you the "heat signature" of every object within their field of view. Requiring no external illumination, these products perform just as well in pitch dark as during broad daylight. They can also see through many atmospheric obscurants like dust, smoke, smog, and light fog. Thermal imaging is truly your 6th Sense.



NIGHT VISION TECHNOLOGIES

Scopes, and sights built around “night vision” technology (commonly referred to as “NVG”, or “image intensified”) make images from the same visible light we can see with our eyes. They take in the small amounts of light available at night that comes from starlight, moonlight, or auxiliary illuminators, magnify them greatly, and create an image on a built-in display. This lets you see clearly at night, and gives you familiar images that are similar to what you see with your eyes, so no additional training in image interpretation is required.



THERMAL IMAGING

FLIR SCOUT TK™
Thermal Imaging Monocular

The FLIR Scout TK is a pocket-sized thermal vision monocular for exploring the outdoors at night and in low light conditions. With 9Hz imaging, Scout TK reveals your surroundings and helps you see people, objects and animals over 100 yards (90 m) away. Simple to use, with still image and video recording, Scout TK is the perfect companion, whether in the back country or your own backyard.

- Choice of White/Black Hot, InstAlert™, Graded Fire video palettes, and more
- Small and lightweight to carry with you anywhere
- 5-hour Rechargeable Li-Ion battery
- Covered by FLIR's unique 2-10 warranty, covering parts and labor for two years and the detector for ten

PART NO.	MODEL
PRODUCTS FOR US AND INTERNATIONAL MARKETS*	
431-0012-21-00S	Scout TK Compact Monocular
431-0008-21-00S	Scout II-240 <9 Hz Thermal Imager
431-0009-21-00S	Scout II-320 <9 Hz Thermal Imager
431-0019-21-00S	Scout II-640 <9 Hz Thermal Imager
431-0008-31-00	Scout III-240 30 Hz Thermal Imager
431-0009-31-00	Scout III-320 60 Hz Thermal Imager
431-0019-31-00	Scout III-640 30 Hz Thermal Imager

FLIR SCOUT II™
Thermal Imaging Monocular

The compact, lightweight FLIR Scout II thermal handheld camera gives you clear, crisp thermal imagery from dawn to dusk and through the dead of night. If you can't bear to miss a thing while exploring the great outdoors, the Scout II is your ticket to experience the night as never before.

- One-handed operation for swift spotting of animals from near to far - no need to slowly scan the landscape and miss a wildlife
- Choice of White Hot, Black Hot, and InstAlert™
- Small and lightweight to carry with you anywhere
- Simple 4-button operation, quick 2-step menu
- Submersible
- 5-hour Rechargeable Li-Ion battery
- Covered by FLIR's unique 2-10 warranty, covering parts and labor for two years and the detector for ten

PART NO.	ACCESSORIES
4126884	Camera Carrying Pouch, Black, Scout II/III and LS-Series
4127499	Camera Case - Rigid, Scout II/III and LS Series
4126887	Camera Holster MOLLE - Backpack/Belt, Tan, Scout II/III and LS Series
4126886	Camera Holster MOLLE - Backpack/Belt, Green, Scout II/III and LS Series
4132304	Camera Holster MOLLE - Backpack/Belt, Black, Scout II/III and LS Series
4127305	Floating Lanyard, Orange, Scout II/III and LS Series

FLIR SCOUT III™
Thermal Imaging Monocular

Scout III is the next generation of FLIR's field-proven line of compact thermal night vision monoculars. Offering enhanced performance with 30 Hz or 60 Hz imaging, and advanced image processing, the Scout III family is ready for your next adventure in the great outdoors. Scout III displays the heat emitted by animals, humans, and terrain - day or night - and has multiple applications for legal hunting, camping, land management, and outdoor recreation.

- One-handed operation for swift spotting of animals from near to far - no need to slowly scan the landscape and miss a suspect
- Creates crisp, clear thermal imagery in all lighting conditions
- Reveals the heat signatures of animals up to 1,140m away
- Simple 4-button operation, quick 2-step menu
- Submersible
- FLIR's unique 2-10 warranty covers parts and labor for two years and the detector for ten

PART NO.	ACCESSORIES (CONTINUED)
4127306	Lens Cap, Scout II/III and LS Series
4127307	Camera Lanyard, Scout II/III Series, Black
4127308	USB Cable, Scout II/III (320 and 640 only) and LS Series, Charge/Video out
4127309	Eye Cup, Scout II/III and LS Series
4131103	Multi-Prong USB charger (US/UK/EU/AUS plugs)

*These items are export-controlled, please see page 2



FLIR **LS-X**

Thermal Imaging Monocular

FLIR **LS-XR**

Thermal Imaging Monocular

FLIR's LS-X and LS-XR handheld thermal night vision monoculars are built specifically for those who serve and protect. This powerful, yet simple imager gives Law Enforcement the upperhand whether searching for evidence or pursuing a suspect, all in the palm of your hand. The newest additions to this field-proven line, LS-X and the LS-XR, feature enhanced resolution displays, extended zoom capabilities, and video output. Whatever you are searching for, find it with FLIR.

- One-handed operation for swift spotting of objects from near to far - no need to slowly scan the scene and miss a suspect
- Enhanced resolution LCD display
- Simple 4-button operation, quick 2-step menu
- Multiple InstAlert™ levels call attention to hot objects
- Red laser pointer
- ¼-20 tripod mount
- Submersible

PART NO.	MODEL
PRODUCTS FOR US AND INTERNATIONAL MARKETS*	
431-0010-21-00	LS-X (336x256) 19mm, NTSC/PAL, 60Hz
431-0010-21-00S	LS-X (336x256) 19mm, NTSC/PAL, 7.5 Hz
431-0011-21-00	LS-XR (640x512) 35mm, NTSC/PAL, 30 Hz
431-0011-21-00S	LS-XR (640x512) 35mm, NTSC/PAL, 7.5 Hz
ACCESSORIES	
4126884	Camera Carrying Pouch, Black, Scout II and LS Series
4127499	Camera Case - Rigid, Scout II and LS Series
4126887	Camera Holster MOLLE - Backpack/Belt, Tan, Scout II and LS Series
4126886	Camera Holster MOLLE - Backpack/Belt, Green, Scout II and LS Series
4132304	Camera Holster MOLLE - Backpack/Belt, Black, Scout II and LS Series
4127305	Floating Lanyard, Orange, Scout II and LS Series
4127306	Lens Cap, Scout II and LS Series
4127307	Camera Lanyard, Scout II Series, Black
4127308	USB Cable, Scout II (320 Only) and LS Series, Charge/Video out
4127309	Eye Cup, Scout II and LS Series
4131103	Multi-Prong USB charger (US/UK/EU/AUS plugs)

*These items are export-controlled, please see page 2



ARMASIGHT by FLIR **PROMETHEUS C***

Thermal Imaging Monocular

The Prometheus C is a solid state, uncooled, long-wave infrared, magnified, dedicated handheld thermal imager intended for day and night engagements. The thermal imaging technology allows you to detect targets by cutting through snow, dust, smoke, fog, haze, and other atmospheric obscurants. The Prometheus C demonstrates its operational flexibility for all mission applications.

Its proprietary hyper-image processing (HIP) gives the Prometheus C a robust library of software features to tailor the image to the needs of the mission. Plus, the operator can record video using the Digital Video Recorder (DVR) or augment the battery life by attaching to external battery options.

- Rugged, fiberglass reinforced construction
- 640x480 color LED display
- Simple 3-button control
- Color & monochrome palettes
- Extended operation time with optional external battery power supply

PART NO.	MODEL
PRODUCTS FOR US AND INTERNATIONAL MARKETS*	
TAT173MN2PROC21	Prometheus C 336 2-8x25 (30 Hz) FLIR Tau 2 - 336x256 (17µm) 30Hz, 25 mm Lens
TAT176MN2PROC21	Prometheus C 336 2-8x25 (60 Hz) FLIR Tau 2 - 336x256 (17µm) 60Hz, 25 mm Lens
TAT163MN2PROC11	Prometheus C 640 1-8x25 (30 Hz) FLIR Tau 2 - 640x512 (17µm) 30Hz, 25 mm Lens
PRODUCTS FOR INTERNATIONAL MARKET*	
TAT179MN2PROC21	Prometheus C 336 2-8x25 (9 Hz) FLIR Tau 2 - 336x256 (17µm) 9Hz, 25 mm Lens
ACCESSORIES	
ANAMTM0003	Tripod with a Grip
ANHC000001	Hard Shipping/ Storage Case #101
ATAM000005	HD DVR - High-Definition Digital Recorder
ATAM000008	Extended Battery Pack - Extended Battery Pack with Rechargeable Batteries

*These items are export-controlled, please see page 2



ARMASIGHT by FLIR **PROMETHEUS**

Thermal Imaging Monocular

The Prometheus is the latest and most technologically advanced thermal imaging monocular to enter the sporting, law enforcement, and military markets. The Prometheus product line is based on the FLIR Tau 2 VOx microbolometer core, and is available in a variety of models – each optimizing performance, price, and state-of-the-art technology for myriad uses and mission applications.

The Prometheus is a solid state, uncooled, long-wave infrared, magnified, dedicated handheld thermal imager intended for day and night engagements.

The 24/7 mission capability is only one of the strengths of Prometheus. The thermal imaging technology also allows you to detect targets by cutting through snow, dust, smoke, fog, haze, and other atmospheric obscurants. Unlike the use of laser targeting or near-infrared illumination to augment Night Vision equipment, the Prometheus thermal imager is extremely difficult to detect with other devices, as it emits no visible light or RF energy.

- CNC machined aircraft-aluminum alloy construction
- Easy and intuitive drop-down user interface
- Various color modes
- Digital e-zoom
- Manual focus and sharp enhanced imaging
- Wireless remote control
- Rapid start-up

PART NO.	MODEL
PRODUCTS FOR US AND INTERNATIONAL MARKETS*	
TAT173MN4PROM31	Prometheus 336 3-12x50 (30 Hz), FLIR Tau 2 - 336x256 (17µm) 30Hz, 50 mm Lens
TAT176MN4PROM31	Prometheus 336 3-12x50 (60 Hz), FLIR Tau 2 - 336x256 (17µm) 60Hz, 50 mm Lens
TAT163MN4PROM21	Prometheus 640 2-16x50 (30 Hz), FLIR Tau 2 - 640x512 (17µm) 30Hz, 50 mm Lens
TAT166MN4PROM21	Prometheus 640 2-16x50 (60 Hz), FLIR Tau 2 - 640x512 (17µm) 60Hz, 50 mm Lens
PRODUCTS FOR INTERNATIONAL MARKET*	
TAT179MN4PROM31	Prometheus 336 3-12x50 (9 Hz) FLIR Tau2 - 336x256 (17µm) 9Hz, 50 mm Lens
ACCESSORIES	
ANAMTM0003	Tripod with a Grip
ANHCO00001	Hard Shipping/ Storage Case #101
ATAM000005	HD DVR - High-Definition Digital Recorder
ATAM000008	Extended Battery Pack - Extended Battery Pack with Rechargeable Batteries

*These items are export-controlled, please see page 2



ARMASIGHT by FLIR **PROMETHEUS PRO**

Thermal Imaging Monocular

The Prometheus Pro is a high-performance, handheld thermal monocular that can withstand immersion in water up to 20 meters and absorb the most brutal environmental shocks. Putting the most advanced system available on the market today in the palm of your hand, it includes options like an electronic compass and inclinometer. Available in two thermal resolutions, Prometheus Pro gives users a choice between 50 or 100 mm lens options, creating a wide variety of optical magnifications and range performance capabilities. It also includes a unique dual battery option, so operators can use either four 3.0VDC CR123A batteries or four 1.5VDC AA batteries pre-loaded in a cartridge.

- Operates on CR123A or AA batteries
- SVGA 800x600 OLED display
- Digital compass and digital inclinometer
- Wireless 5-button remote

PART NO.	MODEL
PRODUCTS FOR US AND INTERNATIONAL MARKETS*	
TAT173MN5PPRO41	Prometheus Pro 336 (30 Hz) FLIR Tau 2 - 336x256 (17µm) 30Hz, 50 mm Lens
TAT176MN5PPRO41	Prometheus Pro 336 (60 Hz) FLIR Tau 2 - 336x256 (17µm) 60Hz, 50 mm Lens
TAT173MN1PPRO81	Prometheus Pro 336 (30 Hz) FLIR Tau 2 - 336x256 (17µm) 30Hz, 100 mm Lens
TAT176MN1PPRO81	Prometheus Pro 336 (60 Hz) FLIR Tau 2 - 336x256 (17µm) 60Hz, 100 mm Lens
TAT163MN5PPRO21	Prometheus Pro 640 (30 Hz) FLIR Tau 2 - 640x512 (17µm) 30Hz, 50 mm Lens
TAT166MN5PPRO21	Prometheus Pro 640 (60 Hz) FLIR Tau 2 - 640x512 (17µm) 60Hz, 50 mm Lens
TAT163MN1PPRO41	Prometheus Pro 640 (30 Hz) FLIR Tau 2 - 640x512 (17µm) 30Hz, 100 mm Lens
TAT166MN1PPRO41	Prometheus Pro 640 (60 Hz) FLIR Tau 2 - 640x512 (17µm) 60Hz, 100 mm Lens
ACCESSORIES	
ATVR000002	IRIS Wireless Head Mounted Display
IALA00AMRF22001	AMRF2200 - Advanced Modular (Laser) Rangefinder
ATAM000005	HD DVR - High-Definition Digital Recorder
ATAM000008	Extended Battery Pack - Extended Battery Pack with Rechargeable Batteries
ANAMTM0003	Tripod with a Grip
ANHCO00001	Hard Shipping/ Storage Case #101

*These items are export-controlled, please see page 2



ARMASIGHT by FLIR **COMMAND**

Thermal Imaging Bi-Ocular

The Command line is the technologically advanced family of thermal imaging bi-oculars. Bi-ocular design is better for sustained viewing periods and improved depth perception. The Command product line is based on the FLIR Tau 2 VOx microbolometer core, and includes a variety of different models, each optimizing performance, price, and state-of-the-art technology for a variety of uses and mission applications. The Command is a solid state, uncooled, long-wave infrared, magnified, dedicated handheld thermal imager intended for day and nighttime missions.

The 24/7 mission capability is just one of the many strengths this product line has to offer. Thermal imaging technology also allows you to detect targets by cutting through snow, dust, smoke, fog, haze, and other atmospheric obscurants. Unlike the use of laser targeting or near-infrared illumination to augment Night Vision equipment, Command thermal imagers are extremely difficult to detect with other devices, as they emit no visible light or RF energy.

Armasight by FLIR is convinced that the Command thermal imaging bi-ocular represents one of the most sophisticated devices on the market today, due to its superior price-to-performance value.

- Mid and long range detection
- CNC machined aircraft-aluminum alloy construction
- Easy and intuitive drop-down user interface
- Various color modes
- Digital e-zoom
- Rapid start-up

COMMAND is the new name of Helios bi-oculars. Specifications and warranties for the devices remain the same.

PART NO.	MODEL
PRODUCTS FOR US AND INTERNATIONAL MARKETS*	
TAT173BN4HELI31	Command 336 3-12x50 (30 Hz), FLIR Tau 2 - 336x256 (17µm) 30Hz, 50 mm Lens
TAT176BN4HELI31	Command 336 3-12x50 (60 Hz), FLIR Tau 2 - 336x256 (17µm) 60Hz, 50 mm Lens
TAT173BN7HDHL51	Command 336 5-20x75 (30 Hz), FLIR Tau 2 - 336x256 (17µm) 30Hz, 75 mm Lens
TAT176BN7HDHL51	Command 336 5-20x75 (60 Hz), FLIR Tau 2 - 336x256 (17µm) 60Hz, 75 mm Lens
TAT173BN1HDHL81	Command 336 8-32x100 (30 Hz), FLIR Tau 2 - 336x256 (17µm) 30Hz, 100 mm Lens
TAT176BN1HDHL81	Command 336 8-32x100 (60 Hz), FLIR Tau 2 - 336x256 (17µm) 60Hz, 100 mm Lens
TAT163BN4HELI21	Command 640 2-16x50 (30 Hz), FLIR Tau 2 - 640x512 (17µm) 30Hz, 50 mm Lens
TAT166BN4HELI21	Command 640 2-16x50 (60 Hz), FLIR Tau 2 - 640x512 (17µm) 60Hz, 50 mm Lens
TAT163BN7HDHL31	Command 640 3-24x75 (30 Hz), FLIR Tau 2 - 640x512 (17µm) 30Hz, 75 mm Lens
TAT166BN7HDHL31	Command 640 3-24x75 (60 Hz), FLIR Tau 2 - 640x512 (17µm) 60Hz, 75 mm Lens
TAT163BN1HDHL41	Command 640 4-32x100 (30 Hz), FLIR Tau 2 - 640x512 (17µm) 30Hz, 100 mm Lens
TAT166BN1HDHL41	Command 640 4-32x100 (60 Hz), FLIR Tau 2 - 640x512 (17µm) 60Hz, 100 mm Lens
PRODUCTS FOR INTERNATIONAL MARKET*	
TAT179BN4HELI31	Command 336 3-12x50 (9 Hz) FLIR Tau 2 - 336x256 (17µm) 9Hz, 50 mm Lens
TAT179BN7HDHL51	Command 336 5-20x75 (9Hz) FLIR Tau 2 - 336x256 (17µm) 9Hz, 75mm Lens
TAT179BN1HDHL81	Command 336 8-32x100 (9 Hz) FLIR Tau 2 - 336x256 (17µm) 9Hz, 100mm Lens
ACCESSORIES	
IALA00AMRF22001	AMRF2200 - Advanced Modular (Laser) Rangefinder
ATAM000005	HD DVR - High-Definition Digital Recorder
ATAM000008	Extended Battery Pack - Extended Battery Pack with Rechargeable Batteries
ANAMTM0003	Tripod with a Grip
ANHCO00001	Hard Shipping/ Storage Case #101

*These items are export-controlled, please see page 2



ARMASIGHT by FLIR **COMMAND PRO**

Thermal Imaging Bi-Ocular

The Command Pro is a high performance handheld thermal bi-ocular. The bi-ocular design is better for sustained viewing periods and improved depth perception. The Command Pro can withstand even the most brutal environmental shocks. The Command Pro has some of the most advanced features on the market today, including options like an electronic compass and inclinometer. Utilizing the latest FLIR technology, the Command Pro is offered in 336x256 or 640x512 resolutions. These options are further enhanced by professional, military-grade 50 or 100 mm lenses, creating a wide variety of optical magnifications and range performance capabilities. Command Pro also has a unique dual battery option that consists of either four 3.0VDC CR123A batteries or four 1.5VDC AA batteries pre-loaded in a cartridge.

- Mid and long range detection
- SVGA 800x600 OLED display
- Digital compass and digital inclinometer
- Wireless 5-button remote
- Still picture and video recording capability (Mounted DVR option)

COMMAND PRO is the new name of Helios Pro bi-oculars. Specifications and warranties for the devices remain the same.

PART NO.	MODEL
PRODUCTS FOR US AND INTERNATIONAL MARKETS*	
TAT173BN5HPRO41	Command Pro 336 4-16x50 (30 Hz) FLIR Tau 2 - 336x256 (17µm) 30Hz, 50 mm Lens
TAT176BN5HPRO41	Command Pro 336 4-16x50 (60 Hz) FLIR Tau 2 - 336x256 (17µm) 60Hz, 50 mm Lens
TAT173BN1HPRO81	Command Pro 336 8-32x100 (30 Hz) FLIR Tau 2 - 336x256 (17µm) 30Hz, 100 mm
TAT176BN1HPRO81	Command Pro 336 8-32x100 (60 Hz) FLIR Tau 2 - 336x256 (17µm) 60Hz, 100 mm
TAT163BN5HPRO21	Command Pro 640 2-16x50 (30 Hz) FLIR Tau 2 - 640x512 (17µm) 30Hz, 50 mm Lens
TAT166BN5HPRO21	Command Pro 640 2-16x50 (60 Hz) FLIR Tau 2 - 640x512 (17µm) 60Hz, 50 mm Lens
TAT163BN1HPRO41	Command Pro 640 4-32x100 (30 Hz) FLIR Tau 2 - 640x512 (17µm) 30Hz, 100 mm
TAT166BN1HPRO41	Command Pro 640 4-32x100 (60 Hz) FLIR Tau 2 - 640x512 (17µm) 60Hz, 100 mm
ACCESSORIES	
ATVR000002	IRIS Wireless Head Mounted Display
IALA00AMRF22001	AMRF2200 - Advanced Modular (Laser) Rangefinder
ATAM000005	HD DVR - High-Definition Digital Recorder
ATAM000008	Extended Battery Pack - Extended Battery Pack with Rechargeable Batteries
ANAMTM0003	Tripod with a Grip
ANHCO00001	Hard Shipping/ Storage Case #101

*These items are export-controlled, please see page 2



FLIR **THERMOSIGHT RS**

Thermal Imaging Riflescope

The FLIR Thermosight RS-Series thermal riflescope gives hunters and outdoor enthusiasts the ability to see clearly in total darkness, giving them the information they need while making quick decisions, maximizing operational capabilities, and improving safety.

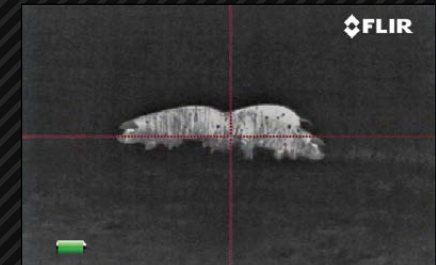
The Thermosight RS-Series camera uses Vanadium Oxide (VOx) microbolometer sensors to give excellent, high-fidelity thermal imagery with the detail necessary for cutting edge performance. You will detect and recognize animals at improved distances, in total darkness, as well as through smoke, dust, and light fog. The user can also see better through foliage and in uneven lighting conditions. Because Thermosight RS-Series cameras see heat, not light, the camera can find animals hiding in bushes.

You can see more – and see farther – than with other night vision technologies because Thermosight RS-Series cameras see clearly without any visible light whatsoever. You can see farther at night than with technologies that need ambient light to work and you can see heat sources that these other cameras could never find.

- Rugged design
- Wide range of models with various resolution and field of view choices
- Portable and lightweight
- USB connection for battery charging, or for viewing video on an external monitor via the custom USB-to-RCA cable (not available with RS24 model)
- Rechargeable internal Li-Ion battery

PART NO.	MODEL	
PRODUCTS FOR US AND INTERNATIONAL MARKETS*		
431-0017-01-00	Thermosight RS24, 30Hz, 1X - 13 mm, Direct View TWS	▲ ITAR
431-0017-02-00	Thermosight RS32, 60Hz, 1.25 - 5X - 19 mm, Direct View TWS	▲ ITAR
431-0017-03-00	Thermosight RS32, 60Hz, 2.25 - 9X - 35 mm, Direct View TWS	▲ ITAR
431-0017-04-00	Thermosight RS32, 60Hz, 4 - 16X - 60 mm, Direct View TWS	▲ ITAR
431-0017-05-00	Thermosight RS64, 30Hz, 1.1 - 9X - 35 mm, Direct View TWS	▲ ITAR
431-0017-06-00	Thermosight RS64, 30Hz, 2 - 16X, - 60 mm, Direct View TWS	▲ ITAR
ACCESSORIES		
4137962	Thermosight Stray light eye shield/cup	
4137965	Thermosight Lens Cover, Front Objective	
4137996	Thermosight Lens Cover, Rear Visible Optic	
4137997	Thermosight Custom USB to Video out cable	

*These items are export-controlled, please see page 2



ARMASIGHT by FLIR **PREDATOR**[®]

Thermal Imaging Riflescope

ARMASIGHT by FLIR **ZEUS**[®]

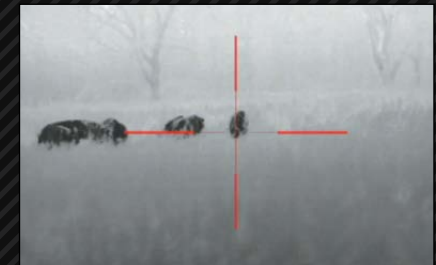
Thermal Imaging Riflescope

The Predator/Zeus Series are solid state, uncooled, longwave infrared thermal weapon scopes optimized for both day and night engagements. Not only the smallest and lightest in their class, Predator/Zeus thermal weapon sights are packed with features while still being simple to operate. Installing the Predator/Zeus on a weapon is easy, repeatable, and reliable, thanks to its unique and user-friendly MIL-STD-1913/ Weaver/ Picatinny rail-compatible quick-release locking mechanism. The solid state technology and software algorithms, combined with a complementary color reticle platform, ensures maximum reticle contrast, high-level target accuracy, and boresight retention that cannot be achieved with mechanical boresight adjusters and traditional ballistic drums. This level of accuracy is translated into the electronic zoom (e-zoom) function of the Predator/Zeus thermal imaging weapon sight, which can be progressively increased from 1x to 2x, 4x, and 8x without changing the point-of-aim to point-of-impact relationship of the targeting reticle.

- The lightest and most compact scope in its class
- Multiple digitally controlled reticle patterns
- Various color modes
- CNC machined aircraft-aluminum alloy construction
- Rapid start-up
- Wireless remote control for tactical operations
- Picatinny rail quick release mount

PART NO.	MODEL	
PRODUCTS FOR US AND INTERNATIONAL MARKETS*		
TAT173WN2PRED21	Predator 336 2-8x25 (30 Hz), FLIR Tau 2 - 336x256 (17µm) 30Hz, 25 mm Lens	▲ ITAR
TAT176WN2PRED21	Predator 336 2-8x25 (60Hz), FLIR Tau 2 - 336x256 (17µm) 60Hz, 25 mm Lens	▲ ITAR
TAT163WN2PRED11	Predator 640 1-8x25 (30 Hz), FLIR Tau 2 - 640x512 (17µm) 30Hz, 25mm Lens	▲ ITAR
TAT173WN4ZEUS31	Zeus 336 3-12x50 (30 Hz), FLIR Tau 2 - 336x256 (17µm) 30Hz, 50 mm Lens	▲ ITAR
TAT176WN4ZEUS31	Zeus 336 3-12x50 (60 Hz), FLIR Tau 2 - 336x256 (17µm) 60Hz, 50 mm Lens	▲ ITAR
TAT173WN7ZEUS51	Zeus 336 5-20x75 (30 Hz), FLIR Tau 2 - 336x256 (17µm) 30Hz, 75 mm Lens	▲ ITAR
TAT176WN7ZEUS51	Zeus 336 5-20x75 (60 Hz), FLIR Tau 2 - 336x256 (17µm) 60Hz, 75 mm Lens	▲ ITAR
TAT163WN4ZEUS21	Zeus 640 2-16x50 (30 Hz), FLIR Tau 2 - 640x512 (17µm) 30Hz, 50 mm Lens	▲ ITAR
TAT166WN4ZEUS21	Zeus 640 2-16x50 (60 Hz), FLIR Tau 2 - 640x512 (17µm) 60Hz, 50 mm Lens	▲ ITAR
TAT163WN7ZEUS31	Zeus 640 3-24x75 (30 Hz), FLIR Tau 2 - 640x512 (17µm) 30Hz, 75 mm Lens	▲ ITAR
TAT166WN7ZEUS31	Zeus 640 3-24x75 (60 Hz), FLIR Tau 2 - 640x512 (17µm) 60Hz, 75 mm Lens	▲ ITAR
ACCESSORIES		
ATVR000002	IRIS Wireless Head Mounted Display	
IALA00AMRF22001	AMRF2200 - Advanced Modular (Laser) Rangefinder	
ATAM000005	HD DVR - High-Definition Digital Recorder	
ATAM000008	Extended Battery Pack - Extended Battery Pack with Rechargeable Batteries	
ANHC000001	Hard Shipping/ Storage Case #101	

*These items are export-controlled, please see page 2





ARMASIGHT by FLIR **ZEUS PRO**

Thermal Imaging Riflelescope

The Zeus Pro thermal weapon sight has simple and intuitive controls, ballistic drop reticles, electronic compass, and digital inclinometer for finer range estimation and target orientation. It can also accept video-in imagery for those times when map or rangefinder display overlays are required, and external power for extended operations. Supported external devices include an optional laser range finder, external battery pack, multispectral laser and other accessories designed to attach on the scope's MIL-STD-1913 rail.

Solid state technology reticle adjustments and software algorithms, combined with a complementary color reticle platform, ensures maximum reticle contrast, high level target accuracy, and boresight retention. This level of accuracy is translated into the tracking electronic zoom (e-zoom) function, which can be progressively increased without changing the point-of-aim to point-of-impact relationship of the targeting reticle.

- Operation in presence of environmental obscurants (smoke, dust, haze, fog)
- Reliable quick-release locking weapon mount
- SVGA 800x600 OLED display
- Digital compass & digital inclinometer
- Tracking digital e-zoom
- Multiple user selectable ballistic and quick acquisition reticles

PART NO.	MODEL
PRODUCTS FOR US AND INTERNATIONAL MARKETS*	
TAT173WN5ZPRO41	Zeus Pro 336 4-16x50 (30 Hz) FLIR Tau 2 - 336x256 (17µm) 30Hz, 50 mm Lens 
TAT176WN5ZPRO41	Zeus Pro 336 4-16x50 (60 Hz) FLIR Tau 2 - 336x256 (17µm) 60Hz, 50 mm Lens 
TAT173WN1ZPRO81	Zeus Pro 336 8-32x100 (30 Hz) FLIR Tau 2 - 336x256 (17µm) 30Hz, 100 mm Lens 
TAT176WN1ZPRO81	Zeus Pro 336 8-32x100 (60 Hz) FLIR Tau 2 - 336x256 (17µm) 60Hz, 100 mm Lens 
TAT163WN5ZPRO21	Zeus Pro 640 2-16x50 (30 Hz) FLIR Tau 2 - 640x512 (17µm) 30Hz, 50 mm Lens 
TAT166WN5ZPRO21	Zeus Pro 640 2-16x50 (60 Hz) FLIR Tau 2 - 640x512 (17µm) 60Hz, 50 mm Lens 
TAT163WN1ZPRO41	Zeus Pro 640 4-32x100 (30 Hz) FLIR Tau 2 - 640x512 (17µm) 30Hz, 100 mm Lens 
TAT166WN1ZPRO41	Zeus Pro 640 4-32x100 (60 Hz) FLIR Tau 2 - 640x512 (17µm) 60Hz, 100 mm Lens 
ACCESSORIES	
ATVR000002	IRIS Wireless Head Mounted Display
IALA00AMRF22001	AMRF2200 - Advanced Modular (Laser) Rangefinder
ATAM000005	HD DVR - High-Definition Digital Recorder
ATAM000008	Extended Battery Pack - Extended Battery Pack with Rechargeable Batteries
ANH0000001	Hard Shipping/ Storage Case #101

*These items are export-controlled, please see page 2



ARMASIGHT by FLIR **APOLLO**

Thermal Imaging Clip-on System

Armasight by FLIR Apollo is latest and most technologically advanced family of thermal imaging clip-on systems to the sporting, law enforcement, and military markets. The Apollo product line was developed based on the FLIR Tau 2 VOx microbolometer core to optimize performance, price, and state-of-the-art technology for a variety of users, from the committed hunter to the designated military marksman.

The Apollo is an uncooled long-wave thermal clip-on device intended to mount in front of the existing magnified day sight. The immediate advantages of this approach of converting the day scope into a thermal imaging device include no change in cheek weld, no change in trigger reach, and continued use of existing ballistic reticles in the day scope. The 24/7 mission capability is only one of the strengths of the Apollo. The thermal imaging technology also allows you to detect targets by cutting through snow, dust, smoke, fog, haze, and other atmospheric obscurants.

The Apollo eliminates the traditional requirement of removing your existing day scope from your rifle, to replace it with a dedicated thermal sight (which would also involve re-zeroing). The Apollo simply mounts in front of your own standard daytime optical sight. Factory bore-sighted to tolerances of less than 1 MOA, no re-zeroing is required. The Apollo allows the user to maintain consistent eye relief and shooting position; because the operator uses their own, familiar day scope – no re-training is required.

- Converts your day scope, sight, or binoculars into thermal imaging device
- Mounts in front of any daytime scope, no re-zeroing required
- High-performance thermal imaging camera
- Lightweight and robust design
- CNC machined aircraft-aluminum alloy construction
- MIL-STD-1913 (Picatinny Rail) quick release mount

PART NO.	MODEL	
PRODUCTS FOR US AND INTERNATIONAL MARKETS*		
TAT253CN4APOL01	Apollo 336 (30 Hz), FLIR Tau 2 - 336x256 (17µm) 30Hz, 50mm Lens	▲ ITAR
TAT256CN4APOL01	Apollo 336 (60 Hz), FLIR Tau 2 - 336x256 (17µm) 60Hz, 50 mm Lens	▲ ITAR
TAT163CN4APOL01	Apollo 640 (30 Hz), FLIR Tau 2 - 640x512 (17µm) 30Hz, 50 mm Lens	▲ ITAR
TAT166CN4APOL01	Apollo 640 (60 Hz), FLIR Tau 2 - 640x512 (17µm) 60Hz, 50 mm Lens	▲ ITAR
ACCESSORIES		
ATVR000002	IRIS Wireless Head Mounted Display	
ANAM000009	Mounting System #1 for Daytime Optics with 25.4-30 mm Objective Diameter	
ANAM000010	Mounting System #2 for Daytime Optics with 38-42 mm Objective Diameter	
ANAM000011	Mounting System #3 for Daytime Optics with 46.7-50 mm Objective Diameter	
ANAM000012	Mounting System #4 for Daytime Optics with 56-58.7 mm Objective Diameter	
ANAM000013	Mounting System #6 for Daytime Optics with 62 mm Objective Diameter	
ANAM000045	Extended Rail Adapter #85 - Dovetail Weaver Picatinny Rail Adapter	
ATAM000005	HD DVR - High-Definition Digital Recorder	
ATAM000008	Extended Battery Pack - Extended Battery Pack with Rechargeable Batteries	
ANHCO00001	Hard Shipping/ Storage Case #101	

*These items are export-controlled, please see page 2



ARMASIGHT by FLIR **APOLLO PRO**

Thermal Imaging Clip-on System

The Apollo Pro family of clip-on thermal imaging devices showcase the latest advancements in the field of uncooled thermal imaging technology for the dismounted soldier, special law enforcement team member, and professional hunter. Built around common core electronics, signal processing, and infinity focused large-format collimating eyepiece, the Apollo Pro Series day/night clip-on thermal imager is available in a variety of options and price points that cater to every application – military and commercial.

An uncooled longwave infrared imager, Apollo Pro mounts in front of the variable magnification sniper day sight without the need to remove the day sight from the weapon. It can also be used as a stand-alone weapon sight and handheld uncooled thermal monocular and it includes a built-in compass and inclinometer for finer range estimation and target orientation. Its unique dual battery option lets Apollo Pro run on either of four 3.0VDC CR123A batteries, or four 1.5VDC AA batteries pre-loaded in a cartridge. In a pinch, the Apollo Pro special power-management feature allows the use of a single 3.0VDC CR123A battery for just over an hour.

Based on its superior price-to-performance value, the Apollo Pro clip-on thermal imaging device represents the most versatile and sophisticated sight available in today's market for hunters, SWAT teams, and military personnel who want to use their own sniper day scopes.

- Converts your day scope into thermal imaging device
- Mounts in front of daytime scope, no re-zeroing required
- Operation in presence of environmental obscurants (smoke, dust, haze, fog)
- Operates on CR123A or AA batteries
- SVGA OLED display
- Digital compass & digital inclinometer
- Tracking digital e-zoom

PART NO.	MODEL	
PRODUCTS FOR US AND INTERNATIONAL MARKETS*		
TAT173CN5APMR01	Apollo Pro MR 336 (30 Hz), FLIR Tau 2 - 336x256 (17µm) 30Hz, 50 mm Lens	▲ ITAR
TAT176CN5APMR01	Apollo Pro MR 336 (60 Hz), FLIR Tau 2 - 336x256 (17µm) 60Hz, 50 mm Lens	▲ ITAR
TAT163CN5APMR01	Apollo Pro MR 640 (30 Hz), FLIR Tau 2 - 640x512 (17µm) 30Hz, 50 mm Lens	▲ ITAR
TAT166CN5APMR01	Apollo Pro MR 640 (60 Hz), FLIR Tau 2 - 640x512 (17µm) 60Hz, 50 mm Lens	▲ ITAR
TAT163CN1APLR01	Apollo Pro LR 640 (30 Hz), FLIR Tau 2 - 640x512 (17µm) 30Hz, 100 mm Lens	▲ ITAR
TAT166CN1APLR01	Apollo Pro LR 640 (60 Hz), FLIR Tau 2 - 640x512 (17µm) 60Hz, 100 mm Lens	▲ ITAR
ACCESSORIES		
ATVR000002	IRIS Wireless Head Mounted Display	
IALA00AMRF22001	AMRF2200 - Advanced Modular (Laser) Rangefinder	
ANAM000045	Extended Rail Adapter #85 - Dovetail Weaver Picatinny Rail Adapter	
ATAM000005	HD DVR - High-Definition Digital Recorder	
ATAM000008	Extended Battery Pack - Extended Battery Pack with Rechargeable Batteries	
ANHC000001	Hard Shipping/ Storage Case #101	

*These items are export-controlled, please see page 2



ARMASIGHT by FLIR IRIS-W HMD
 Wireless Head Mounted Display

Iris Head Mounted Display (Iris HMD) is a remote heads-up display for thermal and digital imaging systems. The Iris HMD allows the operator to view the system display without looking through the eyepiece. This permits the operator to view remotely the imagery and target acquisition data discretely from a concealed position during surveillance and enemy engagement. The Iris HMD is ideally suited for use with medium and heavy machine guns where significant weapon recoil is present. The Iris HMD is also the perfect tool for fighting in built-up areas (FIBUA) where sighting and engaging the enemy around corners, in tunnels, through windows and into other confined spaces where minimum exposure is paramount. The Iris HMD can also be used in conjunction with proximally located remote weapon stations on armored vehicles or static emplacements where operators require concealment for covertness or safety in a hostile environment.

Weighing in at 150g, the Iris HMD is small and lightweight with very low power consumption. It can operate continuously on rechargeable lithium batteries for up to two hours. The Iris HMD interface is compatible with most in-service US Army/Navy head and helmet mounts with the selection of the appropriate adapter. The optional ergonomic, fully adjustable padded head mount assembly allows the Iris HMD to be flipped out of the line of sight when necessary or rapidly removed. The Iris HMD is the right tool for enhancing operational flexibility and capability for the 21st century warrior on the tactical battlefield.

- Head or helmet-mountable flip-up display
- Left or right eye use
- High performance OLED display
- Video-In: analog PAL/NTSC standard, cable included

SPECS

TRANSMISSION FREQUENCY	2.4 GHz
WORKING RANGE	Up to 10 m
DISPLAY TYPE	OLED SVGA
DISPLAY RESOLUTION	800 × 600
EYEPICE FOCAL LENGTH	F27
DIMENSIONS:	
- Eyepiece Unit	79 × 44 × 47 mm (3.1 × 1.7 × 1.85 in)
- Control Unit	76 × 50 × 21 mm (3 × 2 × 0.8 in)
- Transmitter	76 × 50 × 31 mm (3 × 2 × 1.2 in)
WEIGHT:	
- Eyepiece Unit	150 g (5.3 oz)
- Control Unit	80 g (2.8 oz)
- Transmitter	80 g (2.8 oz)

PART NO.	MODEL
ATVR000002	IRIS Wireless Head Mounted Display for High-Performance Digital and Thermal Devices*

*These items are export-controlled, please see page 2



ARMASIGHT by FLIR **AMRF2200**

Advanced Modular Rangefinder

The Advanced Modular Rangefinder (AMRF) is designed to determine the exact distance between the observer and the target between 5 and 2,000 meters. It works with any scope, both optical and night vision or thermal. Measurement results are displayed on displays that are built into the rangefinder. Using an optional cable rangefinder can also be connected to Night Vision Digital Scope. With a rugged, lightweight composite housing, AMRF2200 is waterproof and shock-resistant. The mount system is designed to fit any Picatinny MIL-STD-1913 or Weaver weapon rail. An adjustable lever-cam clamping device ensures quick, easy, and reliable mounting and disassembly.

- High accuracy
- Wide range of measurement from 5 to 2000 m
- Built-in display
- Clicking mechanisms for boresight adjustment
- Fits any Picatinny MIL-STD-1913 and Weaver rail with an adjustable quick-detach mount
- Lightweight durable high-impact plastic body

SPECS

DISTANCE MEASUREMENT RANGE	from 5 to 2,000 m
MEASUREMENT PRECISION	±1 m
ENTRANCE PUPIL DIAMETER	23 mm
EMISSION WAVELENGTH:	
- Instrument laser	905 nm
- Alignment laser	850 nm
MAXIMUM OUTPUT POWER:	
- Instrument laser	0.9 mW
- Alignment laser	0.6 mW ±0.1 mW
EMISSION DIVERGENCE:	
- Instrument laser	3.0 (30 sm on a distance of 100 m)
- Alignment laser	0.5 (5 sm on a distance of 100 m)
BORESIGHT ADJUSTMENT RANGE	±35 mrad (±2°)
BORESIGHT ADJUSTMENT INCREMENT	0.5 mrad ±0.05 mrad (5 sm on a distance of 100 m)
WEAPON MOUNT TYPE	Picatinny or Weaver rail
POWER SUPPLY	Two CR123 lithium batteries (3,0 V)
CURRENT CONSUMPTION:	
- Measuring mode	140 mA
- Alignment mode	50 mA
- Standby mode	30 mA
DIMENSIONS	109 × 69 × 73 mm (4.3 × 2.7 × 2.9 in)
WEIGHT WITHOUT BATTERIES	320 g (11.3 oz)

PART NO.	MODEL
IALA00AMRF22001	AMRF2200 - Advanced Modular (Laser) Rangefinder for Thermal (Tau 2 based) devices*

*These items are export-controlled, please see page 2



THERMAL MONOCULARS SPECIFICATIONS



SPECS	SCOUT TK	SCOUT II 240	SCOUT II 320	SCOUT II 640	SCOUT III 240	SCOUT III 320	SCOUT III 640	LS-X	LS-XR
DETECTOR	160 × 120 Lepton®	240 × 180	336 × 256	640 × 512	240 × 180	336 × 256	640 × 512	336 × 256	640 × 512
LENS	13 mm Fixed Focus	13 mm Fixed Focus	19 mm Fixed Focus	35 mm Fixed Focus	13 mm Fixed Focus	19 mm Fixed Focus	35 mm Fixed Focus	19 mm	35 mm
FIELD OF VIEW	18° × 14°	24° × 18°	17° × 13°	18° × 14°	24° × 18°	17° × 13°	18° × 14°	17° × 13°	18° × 14°
DETECTION RANGE*	90m	350m	550m	1140m	350m	550m	1140m	550m	1140m
OPTICAL MAGNIFICATION	1x	1x	1.1x	1.1x	1x	1.1x	1.1x	1.1x	1.1x
ZOOM	No	No	2x	2x, 4x	No	2x	2x, 4x	2x, 4x	2x, 4x, 8x
REFRESH RATE	< 9 Hz	< 9 Hz	< 9 Hz	< 9 Hz	30 Hz	60 Hz	30 Hz	7.5 or 60 Hz	7.5 or 30 Hz
VIDEO CAPABLE	Video Capture	No	Composite Video Out	Composite Video Out	No	Composite Video Out	Composite Video Out	Video Output	Video Output
POWER	Internal Li-Ion Cell, > 5 hrs								
DIMENSIONS	14.9 × 5.5 × 5.5 mm (6" × 2" × 2 in)	170 × 58 × 62 mm (6.7" × 2.3" × 2.4 in)							
WEIGHT	170 g (6 oz)	340 g (12 oz)							



SPECS	PROMETHEUS C 336 2-8X25	PROMETHEUS C 640 1-8X25	PROMETHEUS 336 3-12X50	PROMETHEUS 640 2-16X50	PROMETHEUS PRO 336 4-16X50	PROMETHEUS PRO 336 8-32X100	PROMETHEUS PRO 640 2-16X50	PROMETHEUS PRO 640 4-32X100
DETECTOR	336 × 256	640 × 512	336 × 256	640 × 512	336 × 256	336 × 256	640 × 512	640 × 512
LENS	25 mm; F/1.0	25 mm; F/1.0	50 mm; F/1.0	50 mm; F/1.0	50 mm; F/1.4	100 mm; F/1.4	50 mm; F/1.4	100 mm; F/1.4
FIELD OF VIEW	13° × 10°	25° × 20°	7.8° × 5.9°	14.8° × 11.8°	6.5° × 5°	3.3° × 2.5°	12.5° × 10°	6.2° × 5°
DETECTION RANGE*	730m	730m	1470m	1470m	1470m	2940m	1470m	2940m
OPTICAL MAGNIFICATION	2x	1x	3x	2x	4x	8x	2x	4x
ZOOM	2x, 4x	2x, 4x, 8x	2x, 4x	2x, 4x, 8x	2x, 4x	2x, 4x	2x, 4x, 8x	2x, 4x, 8x
REFRESH RATE	30 or 60 Hz	30 Hz	30 or 60 Hz	30 or 60 Hz	30 or 60 Hz	30 or 60 Hz	30 or 60 Hz	30 or 60 Hz
VIDEO CAPABLE	Video Out				Video Out			
POWER	2 CR123A 3V Lithium batteries, up to 4 hrs				4 CR123A 3V Lithium batteries or 4 AA 1.5V, up to 7 hrs			
DIMENSIONS	150 × 90 × 52 mm (5.9 × 3.5 × 2.0 in)		194 × 68 × 62 mm (7.6 × 2.7 × 2.4 in)		197 × 76 × 76 mm (7.5 × 3.0 × 3.0 in)	265 × 90 × 100 mm (10.4 × 3.5 × 3.9 in)	197 × 76 × 76 mm (7.5 × 3.0 × 3.0 in)	265 × 90 × 100 mm (10.4 × 3.5 × 3.9 in)
WEIGHT	0.4 kg (0.88 lb)		0.55 kg (1.2 lbs)		0.8 kg (1.8 lb)	1.15 kg (2.54 lb)	0.8 kg (1.8 lb)	1.15 kg (2.54 lb)

* Detection distance based on Jonson's criteria. Actual range may vary depending on camera set-up, environmental conditions, user experience and type of display used. Assumptions: 50 % probability, given 2°C temperature difference and 0.85/km atmospheric attenuation factor.

THERMAL BINOCULARS SPECIFICATIONS



SPECS	COMMAND 336 3-12X50	COMMAND 640 2-16X50	COMMAND 336 5-20X75	COMMAND 640 3-24X75	COMMAND 336 8-32X100	COMMAND 640 4-32X100	COMMAND PRO 336 4-16X50	COMMAND PRO 336 8-32X100	COMMAND PRO 640 2-16X50	COMMAND PRO 640 4-32X100
DETECTOR	336 × 256	640 × 512	336 × 256	640 × 512	336 × 256	640 × 512	336 × 256	336 × 256	640 × 512	640 × 512
LENS	50 mm; F/1.0	50 mm; F/1.0	75 mm; F/1.1	75 mm; F/1.1	100 mm; F/1.3	100 mm; F/1.3	50 mm; F/1.4	100 mm; F/1.4	50 mm; F/1.4	100 mm; F/1.4
FIELD OF VIEW	7.8° × 5.9°	14.8° × 11.8°	4.3° × 3.2°	8.3° × 6.6°	3.3° × 2.5°	6.2° × 5.0°	6.5° × 5°	3.3° × 2.5°	12.5° × 10°	6.2° × 5°
DETECTION RANGE*	1470m	1470m	2200m	2200m	2940m	2940m	1470m	2940m	1470m	2940m
OPTICAL MAGNIFICATION	2.8x	1.5x	5x	3x	8x	4x	4x	8x	2x	4x
ZOOM	2x, 4x	2x, 4x, 8x	2x, 4x	2x, 4x, 8x	2x, 4x	2x, 4x, 8x	2x, 4x	2x, 4x	2x, 4x, 8x	2x, 4x, 8x
REFRESH RATE	30 or 60 Hz	30 or 60 Hz	30 or 60 Hz	30 or 60 Hz	30 or 60 Hz	30 or 60 Hz	30 or 60 Hz	30 or 60 Hz	30 or 60 Hz	30 or 60 Hz
VIDEO CAPABLE	Video Out									
POWER	2 CR123A 3V Lithium batteries, up to 4 hrs						4 CR123A 3V Lithium batteries or 4 AA 1.5V, up to 7 hrs			
DIMENSIONS	238×100×62 mm (9.4×3.9×2.2 in)	272×102×89 mm (10.7×4.0×3.5 in)		290×116×116 mm (11.4×4.5×4.5 in)	241×102×60 mm (9.5×4.0×2.4 in)	309×102×90 mm (12.1×4.0×3.5 in)	241×102×60 mm (9.5×4.0×2.4 in)	309×102×90 mm (12.1×4.0×3.5 in)		
WEIGHT	0.8 kg (1.8 lbs)	1.08 kg (2.4 lbs)		1.3 kg (2.9 lbs)	1.05 kg (2.3 lb)	1.4 kg (3.1 lb)	1.05 kg (2.3 lb)	1.4 kg (3.1 lb)		

THERMAL RIFLESCOPES SPECIFICATIONS



SPECS	THERMOSIGHT RS24 1X	THERMOSIGHT RS32 1.25-5X	THERMOSIGHT RS32 2.25-9X	THERMOSIGHT RS32 4-16X	THERMOSIGHT RS64 1.1-9X	THERMOSIGHT RS64 2-16X
DETECTOR	240 × 180	336 × 256	336 × 256	336 × 256	640 × 512	640 × 512
LENS	13 mm	19 mm	35 mm	60 mm	35 mm	60 mm
FIELD OF VIEW	20°	16°	9°	5°	18°	10°
DETECTION RANGE*	350m	570m	800m	1300m	1140m	1850m
OPTICAL MAGNIFICATION	1x	1.25x	2.25x	4x	1.1x	2x
ZOOM	N/A	Up to 4x	Up to 4x	Up to 4x	Up to 8x	Up to 8x
REFRESH RATE	30 Hz	60 Hz	60 Hz	60 Hz	30 Hz	30 Hz
VIDEO CAPABLE	No	Yes				
POWER	Internal Li-Ion Cell, > 4 hrs					
DIMENSIONS		203×84×74 mm (8×3.3×2.9 in)		216×84×74 mm (8.5×3.3×2.9 in)	203×84×74 mm (8×3.3×2.9 in)	216×84×74 mm (8.5×3.3×2.9 in)
WEIGHT		0.8 kg (1.8 lb)		1.1 kg (2.4 lb)	0.8 kg (1.8 lb)	1.1 kg (2.4 lb)

* Detection distance based on Jonson's criteria. Actual range may vary depending on camera set-up, environmental conditions, user experience and type of display used. Assumptions: 50 % probability, given 2°C temperature difference and 0.85/km atmospheric attenuation factor.

THERMAL RIFLESCOPES SPECIFICATIONS



SPECS	PREDATOR 336 2-8X25	PREDATOR 640 1-8X25	ZEUS 336 3-12X50	ZEUS 640 2-16X50	ZEUS 336 5-20X75	ZEUS 640 3-24X75	ZEUS PRO 336 4-16X50	ZEUS PRO 336 8-32X100	ZEUS PRO 640 2-16X50	ZEUS PRO 640 4-32X100
DETECTOR	336 × 256	640 × 512	336 × 256	640 × 512	336 × 256	640 × 512	336 × 256	336 × 256	640 × 512	640 × 512
LENS	25 mm; F/1.0	25 mm; F/1.0	50 mm; F/1.0	50 mm; F/1.0	75 mm; F/1.0	75 mm; F/1.0	50 mm; F/1.4	100 mm; F/1.4	50 mm; F/1.4	100 mm; F/1.4
FIELD OF VIEW	13° × 10°	25° × 8°	7.8° × 5.9°	14.8° × 11.8°	4.3° × 3.3°	8.3° × 6.6°	6.5° × 5°	3.3° × 2.5°	12.5° × 10°	6.2° × 5°
DETECTION RANGE*	730m	730m	1470m	1470m	2200m	2200m	1470m	2940m	1470m	2940m
OPTICAL MAGNIFICATION	2x	1x	3x	2x	5x	3x	4x	8x	2x	4x
ZOOM	2x, 4x	2x, 4x, 8x	2x, 4x	2x, 4x, 8x	2x, 4x	2x, 4x, 8x	2x, 4x	2x, 4x	2x, 4x, 8x	2x, 4x, 8x
REFRESH RATE	30 or 60 Hz	30 Hz	30 or 60 Hz	30 or 60 Hz	30 or 60 Hz	30 or 60 Hz	30 or 60 Hz	30 or 60 Hz	30 or 60 Hz	30 or 60 Hz
VIDEO CAPABLE	Video Out									
POWER	2 CR123A 3V Lithium batteries, up to 4 hrs						4 CR123A 3V Lithium batteries or 4 AA 1.5V, up to 7 hrs			
DIMENSIONS	194×68×78 mm (7.6×2.8×3.2 in)		194×68×78 mm (7.6×2.8×3.2 in)		237×96×101 mm (9.3×3.7×3.9 in)		197×76×76 mm (7.5×3.0×3.0 in)	265×90×100 mm (10.4×3.5×3.9 in)	197×76×76 mm (7.5×3.0×3.0 in)	265×90×100 mm (10.4×3.5×3.9 in)
WEIGHT	0.63 kg (1.4 lbs)		0.7 kg (1.5 lbs)		1.1 kg (2.4 lbs)		0.95 kg (2.0 lb)	1.3 kg (2.9 lb)	0.95 kg (2.0 lb)	1.3 kg (2.9 lb)

THERMAL CLIP-ONS SPECIFICATIONS



SPECS	APOLLO 336	APOLLO 640	APOLLO PRO MR 336	APOLLO PRO MR 640	APOLLO PRO LR 640
DETECTOR	336 × 256	640 × 512	336 × 256	640 × 512	640 × 512
LENS	50 mm; F/1.0	50 mm; F/1.0	50 mm; F/1.4	50 mm; F/1.4	100 mm; F/1.4
FIELD OF VIEW	11° × 9°	15° × 12°	6.6° × 5°	12.5° × 10°	6.2° × 5°
DETECTION RANGE*	1470m	1470m	1470m	1470m	2940m
OPTICAL MAGNIFICATION	1x	1x	1x	1x	1x
ZOOM	2x, 4x	2x, 4x, 8x	2x, 4x	2x, 4x, 8x	2x, 4x, 8x
REFRESH RATE	30 or 60 Hz	30 or 60 Hz	30 or 60 Hz	30 or 60 Hz	30 or 60 Hz
VIDEO CAPABLE	Video Out				
POWER	2 CR123A 3V Lithium batteries, up to 4 hrs			4 CR123A 3V Lithium batteries or 4 AA 1.5V, up to 7 hrs	
DIMENSIONS	217 × 70 × 80 mm (8.5 × 2.8 × 3.2 in)		217 × 76 × 76 mm (8.5 × 3.0 × 3.0 in)		287 × 90 × 100 mm (11.3 × 3.5 × 3.9 in)
WEIGHT	0.7 kg (1.5 lbs)		0.72 kg (1.6 lb)		1.28 kg (2.8 lb)

* Detection distance based on Jonson's criteria. Actual range may vary depending on camera set-up, environmental conditions, user experience and type of display used. Assumptions: 50 % probability, given 2°C temperature difference and 0.85/km atmospheric attenuation factor.



NIGHT VISION

ARMASIGHT by FLIR **AVENGER 10X**

Night Vision Monocular

The Avenger 10x is the new standard by which all long range Night Vision monoculars will be judged in the future. The Avenger 10x uses advanced military-grade optics built into a tough and ergonomic composite housing delivering 10x optical magnification, making it the perfect unit for long range night time observation. Avenger 10x can withstand saltwater, rain, high humidity and temperature extremes, and still provide unsurpassed levels of performance. The Avenger 10x is equipped with manual variable gain control so that the user can select the image brightness level, in order to properly adjust for ambient light levels in the environment. The Avenger 10x comes included with high-powered IR illuminator for long-range use. The Avenger 10x can be equipped with high-performance Gen 2+ and Gen 3 IITs including Green phosphor or "Quick Silver" and "Ghost" IITs, which provide users with natural black & white night vision displays. The Avenger 10x is a high-standard night vision device that will meet the requirements of the most demanding law enforcement officer, military professional, or casual civilian user.

- Powerful 10x magnification
- Rugged design
- Manual variable gain control
- IR850-XLR detachable extra long-range IR illuminator included
- Utilizes single CR123A lithium or AA battery
- Adaptable for use with cameras
- Limited two-year warranty

PART NO.	MODEL	
PRODUCTS FOR US MARKET		
NSMAVENGE029DI1	Avenger 10x ID MG – Gen 2+ "Improved Definition"	
NSMAVENGE029DH1	Avenger 10x HD MG – Gen 2+ "High Definition"	
NSMAVENGE009DI1	Avenger 10x QS MG – Gen 2+ "Quick Silver" White Phosphor	
NSMAVENGE039DA1	Avenger 10x 3 Alpha MG – Gen 3 High-Performance	
NSMAVENGE0P9DA1	Avenger 10x 3P MG – Gen 3 High-Performance Thin-Filmed Auto-Gated IIT	
NSMAVENGE0G9DA1	Avenger 10x Ghost MG – Gen 3 "Ghost" White Phosphor	
NSMAVENGE0F9DA1	Avenger 10x FLAG MG – "FLAG" Filmless Auto-Gated IIT (Advertised by competition as Gen 4)	
PRODUCTS FOR INTERNATIONAL MARKET*		
NSMAVENGE029II1	Avenger 10X IDi MG – Gen 2+ "Improved Definition"	
NSMAVENGE029IH1	Avenger 10X HDi MG – Gen 2+ "High Definition"	
NSMAVENGE009II1	Avenger 10X QSi MG – Gen 2+ "Quick Silver - White Phosphor"	
NSMAVENGE0G9EA1	Avenger 10X Ghost E MG – Gen 3 "Ghost" White Phosphor	▲ ITAR
NSMAVENGE039EA1	Avenger 10X 3E MG – Gen 3	▲ ITAR
NSMAVENGE039NA1	Avenger 10X 3N MG – Gen 3 High Performance	▲ ITAR
ACCESSORIES		
ANAMTM0003	Tripod with a Grip	
ANAF18XLRM	IR850XLR Doubler - Enhances performance of IR850-XLR Illuminator	
ANHC000004	Hard Shipping/ Storage Case #102	

*These items are export-controlled, please see page 2



ARMASIGHT by FLIR **SPARK™**
Multi-Purpose Night Vision Monocular

ARMASIGHT by FLIR **SPARK-G™**
Multi-Purpose Night Vision Monocular

The Spark monocular represents a revolutionary new approach to Night Vision: CORE (Ceramic Optical Ruggedized Engine) image intensifier tubes. While CORE does not contain a microchannel plate (and so by definition lands in the Gen 1 category), that is where the parallels end. Instead of glass, CORE tubes use a specially formulated ceramic compound fused with metal alloys, similar to those used in the production of Gen 2 and Gen 3 image intensifier tubes. Further advances in CORE technology have removed almost all edge distortion, dramatically increased photocathode sensitivity, and most importantly, nearly doubled resolution up to 70 lp/mm.

The Spark is the perfect partner for this new hybrid tube-type – a rugged, lightweight, multi-purpose Night Vision monocular. With optional accessories, it can be hand-held or mounted to headgear. With a day scope adapter, it can convert your existing day scope into a Night Vision device at a cost-effective price. With an optional 3X A-focal lens and IR illuminator, the Spark can serve as a medium-range, ultra-high resolution spotting scope, and with the optional camcorder/ camera adapter, it can even take video or still photography in near-to-total darkness.

The Spark is the ideal Night Vision unit for the outdoorsman or first responder who demands higher resolution, better image clarity, and greater durability than any standard Gen 1 unit can offer.

The Spark-G comes complete with headgear, which allows the unit to be mounted for hands-free operation.

- Compact, rugged design
- Head, helmet, or weapon-mountable
- Utilizes single CR123A lithium battery
- Adaptable for use with cameras
- Built-in Infrared illuminator
- Limited two-year warranty



PART NO.	MODEL
PRODUCTS FOR US AND INTERNATIONAL MARKETS*	
NSMSPARK01CCIC1	Spark - "CORE" IIT, 60-70 lp/mm
NSGSPARK01CCIC1	Spark-G - "CORE" IIT, 60-70 lp/mm (Goggle Kit includes)
ACCESSORIES*	
ANHG000001	Goggle Kit #1 (for Spark)
ANHM000002	Helmet Mount #3 (MICH/PASGT)
ANHM000170	Helmet Mount #170 (Shroud)
ANHG000002	Swing Arm #37: Mini Rail Adapter to Bayonet Mount
ANHM000172	Swing Arm #172: Mini Rail to Dovetail Adapter
ANHM000197	Dual Bridge #197 with individual side Flip-Up Mechanism
ANAF3X0023	3x A-Focal Lens Kit: Lens #22 with Adapter #23
ANAF5X0023	5x A-Focal Lens with Adapter #23
ANAMRF0003	ARFS3 - Advanced Range-Finding Stadia for 3x A-Focal Lens
ANAMRF0005	ARFS5 - Advanced Range-Finding Stadia for 5x A-Focal Lens
ANAM000004	QRM - Quick-Release Weapon Mount #26/ #142
ANKI000032	AIM PRO - Advanced Integrated Mount Pro
ANKIXLR017	IR850-XLR Detachable X-Long-Range Infrared Illuminator w/Dovetail to Weaver Transfer Piece #21, Rechargeable Battery, and Charger
ANAF18XLRM	IR850XLR Doubler - Enhances performance of IR850-XLR Illuminator
ANAM000006	Universal Camera Adapter #45 - Fully-Adjustable Video/ Photo Camera Adapter
ANHC000001	Hard Shipping/ Storage Case #101

*These items are export-controlled, please see page 2

ARMASIGHT by FLIR **SIRIUS***

Multi-Purpose Night Vision Monocular

The Sirius is a high-tech, tough, and durable multi-use Night Vision monocular that delivers great performance at a reasonable cost. Packed with features, the Sirius is a unit that is equally as appropriate for the hunter as it is for the professional security officer or law enforcement professional. Mission configurable, the Sirius can be hand-held or mounted to a helmet or headgear. It can also be mounted onto a rifle, or used for night photography. Optional lenses can turn it into a long-range night viewing device in seconds.

Despite the low cost, the Sirius features manual brightness control, bright light shut-off circuitry, and a built-in spot/flood IR illuminator. The Sirius can be equipped with high-performance Gen 2+, including Green phosphor or "Quick Silver", which provide users with natural black & white Night Vision displays.

- Compact, rugged design
- Head, helmet, or weapon-mountable
- Manual variable gain control
- Bright light cut-off
- Utilizes single CR123A lithium battery or AA alkaline, adapter included
- Built-in infrared illuminator and flood lens
- Limited two-year warranty

PART NO.	MODEL
PRODUCTS FOR US MARKET	
NSMSIRIUS12MDS1	Sirius SD MG – Gen 2+ "Standard Definition"
NSMSIRIUS12MDI1	Sirius ID MG – Gen 2+ "Improved Definition"
NSMSIRIUS1QMDI1	Sirius QS MG – Gen 2+ "Quick Silver" White Phosphor
PRODUCTS FOR INTERNATIONAL MARKET*	
NSMSIRIUS12MIS1	Sirius SDi MG – Gen 2+ "Standard Definition"
NSMSIRIUS12MII1	Sirius IDi MG – Gen 2+ "Improved Definition"
NSMSIRIUS1QMII1	Sirius QSi MG – Gen 2+ "Quick Silver" White Phosphor
ACCESSORIES	
ANHG000004	Goggle Kit #2
ANHM000001	Helmet Mount #4 (MICH/PASGT)
ANHM000183	Helmet Mount #183 (Shroud)
ANHG000002	Swing Arm #37 - Mini Rail Adapter to Bayonet Mount
ANHM000172	Swing Arm #172 - Mini Rail to Dovetail Adapter
ANAF3X0023	3x A-Focal Lens Kit: Lens #22 with Adapter #23
ANAF5X0023	5x A-Focal Lens with Adapter #23
ANAMRF0003	ARFS3 - Advanced Range-Finding Stadia for 3x A-Focal Lens
ANAMRF0005	ARFS5 - Advanced Range-Finding Stadia for 5x A-Focal Lens
ANAM000004	QRM - Quick-Release Weapon Mount #26/ #142
ANKI000032	AIM PRO - Advanced Integrated Mount Pro
ANKI000049	AIM PRO-L - Advanced Integrated Mount Pro Long
ANAM000045	Extended Rail Adapter #85 - Dovetail Weaver Picatinny Rail Adapter
ANAM000016	Camera Adapter #47
ANAM000006	Universal Camera Adapter #45 - Fully-Adjustable Video/ Photo Camera Adapter
ANKIXLR017	IR850-XLR Detachable X-Long-Range Infrared Illuminator w/Dovetail to Weaver Transfer Piece #21, Rechargeable Battery, and Charger
ANAF18XLRM	IR850XLR Doubler - Enhances performance of IR850-XLR Illuminator
ANHC000001	Hard Shipping/ Storage Case #101

*These items are export-controlled, please see page 2



ARMASIGHT by FLIR **N-14**

Multi-Purpose Night Vision Monocular

The N-14 Night Vision monocular is without equal in its class, delivering unmatched performance, even in harsh conditions on land or at sea.

The N-14 mini-monocular is equipped with manual variable gain control so that the image brightness level can be selected by the user to adjust for the ambient light level in his area of operations. The N-14 is available with a whole array of accessories like – 3x, and 5x magnification lenses for mid-long range viewing, head or helmet mounts to allow the unit to be worn as a mono-goggle, dual tube goggle, various different weapon mounts for tactical or hunting use and high powered additional IR illuminators for long range use. The N-14 is available in Gen 2 + and Gen 3 variants, and is well-matched for wherever your mission takes you.

- Compact, rugged design
- Head, helmet, or weapon-mountable
- Optional binocular setup via use of optional dual bridge accessory and two N-14 units
- Auto brightness control
- Bright light cut-off
- Ergonomic, simple, easy to operate controls
- Utilizes single CR123A lithium or AA battery
- Built-in infrared illuminator
- Limited two-year warranty



PART NO.	MODEL	
PRODUCTS FOR US MARKET		
NSMN14000126DS1	N-14 SD – Gen 2+ "Standard Definition"	
NSMN14000126DI1	N-14 ID – Gen 2+ "Improved Definition"	
NSMN14000126DH1	N-14 HD – Gen 2+ "High-Definition"	
NSMN140001Q6DI1	N-14 QS – Gen 2+ "Quick Silver" White Phosphor	
NSMN14000136DB1	N-14 3 Bravo – Gen 3	
NSMN14000136DA1	N-14 3 Alpha – Gen 3 High-Performance	
NSMN140001P6DA1	N-14 3P – Gen 3 High-Performance Thin-Filmed Auto-Gated IIT	
NSMN140001G6DA1	N-14 Ghost – Gen 3 "Ghost" White Phosphor	
NSMN140001F6DA1	N-14 FLAG – "FLAG" Filmless Auto-Gated IIT (Advertised by competition as Gen 4)	
PRODUCTS FOR INTERNATIONAL MARKET*		
NSMN14000126IS1	N-14 SDi – Gen 2+ "Standard Definition"	
NSMN14000126II1	N-14 IDi – Gen 2+ "Improved Definition"	
NSMN14000126IH1	N-14 HDi – Gen 2+ "High Definition"	
NSMN140001Q6II1	N-14 QSi – Gen 2+ "Quick Silver - White Phosphor	
NSMN140001G6EA1	N-14 Ghost E – Gen 3 "Ghost" White Phosphor	▲ ITAR
NSMN14000136EA1	N-14 3E – Gen 3	▲ ITAR
NSMN14000136NA1	N-14 3N – Gen 3 High Performance	▲ ITAR

PART NO.	MODEL
ACCESSORIES	
ANHG000004	Goggle Kit #2
ANHM000001	Helmet Mount #4 (MICH/PASGT)
ANHM000183	Helmet Mount #183 (Shroud)
ANHG000002	Swing Arm #37 - Mini Rail Adapter to Bayonet Mount
ANHM000172	Swing Arm #172 - Mini Rail to Dovetail Adapter
ANHM000188	Armasight Dual Bridge #188 with individual side Flip-Up Mechanism
ANAF3X0002	3x A-Focal Lens #22
ANAF5X0002	5x A-Focal Lens
ANAMRF0003	ARFS3 - Advanced Range-Finding Stadia for 3x A-Focal Lens
ANAMRF0005	ARFS5 - Advanced Range-Finding Stadia for 5x A-Focal Lens
ANEC000001	Shutter Eyeguard #82
ANAM000004	QRM - Quick-Release Weapon Mount #26/ #142
ANKI000032	AIM PRO - Advanced Integrated Mount Pro
ANKI000049	AIM PRO-L - Advanced Integrated Mount Pro Long
ANAM000045	Extended Rail Adapter #85 - Dovetail Weaver Picatinny Rail Adapter
ANAM000001	Scope Adapter Mount #6 - Allows NV Monocular to be mounted behind standard daytime optics for nighttime use
ANLC000001	Demist Shield #34
ANLC000002	Sacrificial Window #30
ANRA000001	Dovetail#21 - Weaver Transfer Piece to attach IR Illuminator
ANAM000029	Camera Adapter #46
ANAM000006	Universal Camera Adapter #45 - Fully-Adjustable Video/ Photo Camera Adapter
ANKIXLR017	IR850-XLR Long-Range IR Illuminator w/Transfer Piece, Rechargeable Battery, Charger
ANAF18XLRM	IR850XLR Doubler - Enhances performance of IR850-XLR Illuminator
ANHC000001	Hard Shipping/ Storage Case #101

*These items are export-controlled, please see page 2



ARMASIGHT by FLIR **PVS-14***

Multi-Purpose Night Vision Monocular

The United States Military commissioned the AN/PVS-14 multi-purpose Night Vision monocular in the late '90s. Today, there are more AN/PVS-14 units currently deployed in NATO Armies than any other Night Vision device. The AN/PVS-14 was the first real multi-use monocular, allowing it to fulfill a huge variety of military needs. It is also one of the most popular Night Vision units for law enforcement professionals.

The PVS-14 uses the same framework, and its battle-proven design is lightweight and tough with superb optics. The PVS-14 is compatible with a host of accessories, allowing it to be hand-held, mounted to a helmet, headgear, weapon, or camera. Designed for the most demanding nighttime Military or law enforcement operations, it is one of the best systems available. The PVS-14 can be equipped with high-performance Gen 2+ and Gen 3 IITs, including Green phosphor or "Quick Silver" and "Ghost" IITs, which provide users with natural black & white Night Vision displays.

- Compact, rugged design
- Waterproof
- Head or helmet-mountable
- Ergonomic, simple, easy to operate controls
- Manual variable gain control
- Built-in infrared illuminator
- Limited two-year warranty

PART NO.	MODEL	
PRODUCTS FOR US MARKET		
NAMPVS140129DI1	PVS-14-ID – Gen 2+ "Improved Definition"	
NAMPVS140129DH1	PVS-14-HD – Gen 2+ "High-Definition"	
NAMPVS1401Q9DI1	PVS-14 QS – Gen 2+ "Quick Silver" White Phosphor	
NAMPVS140139DB1	PVS-14 3 Bravo – Gen 3	
NAMPVS140139DA1	PVS-14 3 Alpha – Gen 3 High-Performance	
NAMPVS1401P9DA1	PVS-14 3P – Gen 3 High-Performance Thin-Filmed Auto-Gated IIT	
NAMPVS1401G9DA1	PVS-14 Ghost – Gen 3 "Ghost" White Phosphor	
NAMPVS1401F9DA1	PVS-14 FLAG – "FLAG" Filmless Auto-Gated IIT (Advertised by competition as Gen 4)	
PRODUCTS FOR INTERNATIONAL MARKET*		
NAMPVS1401G9EA1	PVS-14 Ghost E – Gen 3 "Ghost" White Phosphor	▲ ITAR
NAMPVS140139EA1	PVS-14 3E – Gen 3	▲ ITAR
NAMPVS140139NA1	PVS-14 3N – Gen 3 High Performance	▲ ITAR
ACCESSORIES		
ANHM000005	Norotos MICH Helmet Mount Assembly USA #107	
ANHM000006	Norotos PASGT Helmet Mount Assembly USA #108	
ANAF3X0003	3x A-Focal Mil-Spec Lens #99	
ANAF3X000P	3x A-Focal Lens #22 with Adapter #24/#25	
ANAF5X000P	5x A-Focal Lens with Adapter #24/#25	
ANAMRF0003	ARFS3 - Advanced Range-Finding Stadia for 3x A-Focal Lens	
ANAMRF0005	ARFS5 - Advanced Range-Finding Stadia for 5x A-Focal Lens	
ANKI000032	AIM PRO - Advanced Integrated Mount Pro	
ANKI000049	AIM PRO-L - Advanced Integrated Mount Pro Long	
ANKI000046	Adapter Ring #62 - Adapter Ring to attach PVS-14 onto AIM-Pro and AIM-Pro-L	
ANAM000045	Extended Rail Adapter #85 - Dovetail Weaver Picatinny Rail Adapter	
ANKIXLR017	IR850-XLR Detachable X-Long-Range Infrared Illuminator w/Dovetail to Weaver Transfer Piece #21, Rechargeable Battery, and Charger	
ANAF18XLRM	IR850XLR Doubler - Enhances performance of IR850-XLR Illuminator	
ANHC000001	Hard Shipping/ Storage Case #101	

*These items are export-controlled, please see page 2



ARMASIGHT by FLIR **NYX-7**

Night Vision Goggles

The Nyx-7 is a bi-ocular Night Vision goggle system built around high-grade Gen 2+ image intensifier tubes. They are an exceptional choice for hands-free use. Built with high-grade optics and simple, reliable electronics, the Nyx-7 provides bright and clear Night Vision images, even in the most trying conditions. This unit includes a built-in IR light source for reading maps or basic, short-range illumination in complete darkness.

The Nyx-7 is available with a variety of accessories such as 3x, and 5x magnification lenses for mid-to-long-range viewing, head or helmet mounts for hands-free operation, and additional, high-powered IR illuminators for long-range use.

Water-resistant, rugged, light, and compact, the Nyx-7 is the perfect hands-free unit for a variety of tough operations.

- Lightweight, compact rugged Night Vision goggle system
- Hand-held or helmet-mounted
- Comfortable, flip-up headgear
- Multi-coated all-glass optics
- Auto-brightness control
- Utilizes single CR123A lithium battery or AA alkaline, adapter included
- Water and fog-resistant
- Limited two-year warranty

PART NO.	MODEL
PRODUCTS FOR US MARKET	
NSGNYX70012GDS1	Nyx-7 SD – Gen 2+ "Standard Definition"
NSGNYX70012GDI1	Nyx-7 ID – Gen 2+ "Improved Definition"
NSGNYX7001QGD11	Nyx-7 QS – Gen 2+ "Quick Silver" White Phosphor
PRODUCTS FOR INTERNATIONAL MARKET*	
NSGNYX70012GIS1	Nyx-7 SDi – Gen 2+ "Standard Definition"
NSGNYX70012GI11	Nyx-7 IDi – Gen 2+ "Improved Definition"
NSGNYX7001QGI11	Nyx-7 QSi – Gen 2+ "Quick Silver" White Phosphor
ACCESSORIES	
ANHM000001	Helmet Mount #4 (MICH/PASGT)
ANAF3X0023	3x A-Focal Lens Kit: Lens #22 with Adapter #23
ANAF5X0023	5x A-Focal Lens with Adapter #23
ANAMRF0003	ARFS3 - Advanced Range-Finding Stadia for 3x A-Focal Lens
ANAMRF0005	ARFS5 - Advanced Range-Finding Stadia for 5x A-Focal Lens
ANKIXLR017	IR850-XLR Detachable X-Long-Range Infrared Illuminator w/Dovetail to Weaver Transfer Piece #21, Rechargeable Battery, and Charger
ANAF18XLRM	IR850XLR Doubler - Enhances performance of IR850-XLR Illuminator
ANHCO00001	Hard Shipping/ Storage Case #101

*These items are export-controlled, please see page 2



ARMASIGHT by FLIR **NYX-7 PRO**

Night Vision Goggles

The Nyx-7 PRO is an extremely rugged, compact bi-ocular night vision goggle system. Built with the highest-grade optics and simple, reliable electronics, the Nyx-7 PRO provides clear, bright nighttime images under even the most trying conditions. For hands-free use, it can be worn on the included flip-up head mount or optional universal helmet mount, both of which have a built-in mechanism that will automatically turn the unit off when it is flipped up. The NYX-7 PRO can be equipped with high-performance Gen 2+ or Gen 3 image tubes. The dismantled goggle can also be utilized as an excellent long-range viewer with optional 3x, and 5x afocal lenses.

Rugged, lightweight, and compact, the Nyx-7 PRO is the perfect hands-free unit for users ranging from the casual civilian to the most demanding military and law enforcement professionals.

- Compact and lightweight, rugged design
- Head or helmet-mountable
- Ergonomic, simple, easy to operate controls
- Utilizes single CR123A lithium battery or AA alkaline, adapter included
- Built-in infrared illuminators and flood lens
- Limited two-year warranty

PART NO.	MODEL
PRODUCTS FOR US MARKET	
NSGNYX7P0123DI1	Nyx-7 PRO ID – Gen 2+ "Improved Definition"
NSGNYX7P0123DH1	Nyx-7 PRO HD – Gen 2+ "High-Definition"
NSGNYX7P01Q3DI1	Nyx-7 PRO QS – Gen 2+ "Quick Silver" White Phosphor
NSGNYX7P0133DB1	Nyx-7 PRO 3 Bravo – Gen 3
NSGNYX7P0133DA1	Nyx-7 PRO 3 Alpha – Gen 3 High-Performance
NSGNYX7P01P3DA1	Nyx-7 PRO 3P – Gen 3 High-Performance Thin-Filmed Auto-Gated IIT
PRODUCTS FOR INTERNATIONAL MARKET*	
NSGNYX7P0123II1	Nyx-7 PRO IDi – Gen 2+ "Improved Definition"
NSGNYX7P0123IH1	Nyx-7 PRO HDi – Gen 2+ "High Definition"
NSGNYX7P01Q3II1	Nyx-7 PRO QSi – Gen 2+ "Quick Silver" White Phosphor
NSGNYX7P0133EA1	Nyx-7 PRO 3E – Gen 3 ▲ ITAR
NSGNYX7P0133NA1	Nyx-7 PRO 3N – Gen 3 High Performance ▲ ITAR
ACCESSORIES	
ANHM000001	Helmet Mount #4 (MICH/PASGT)
ANAM000034	Adapter #59 Mini Rail Adapter to Bayonet Mount
ANAF3X0002	3x A-Focal Lens #22
ANAF5X0002	5x A-Focal Lens
ANAMRF0003	ARFS3 - Advanced Range-Finding Stadia for 3x A-Focal Lens
ANAMRF0005	ARFS5 - Advanced Range-Finding Stadia for 5x A-Focal Lens
ANKIXLR017	IR850-XLR Detachable X-Long-Range Infrared Illuminator w/Dovetail to Weaver Transfer Piece #21, Rechargeable Battery, and Charger
ANAF18XLRM	IR850XLR Doubler - Enhances performance of IR850-XLR Illuminator
ANHC000001	Hard Shipping/ Storage Case #101

*These items are export-controlled, please see page 2



ARMASIGHT by FLIR **PVS-7**

Night Vision Goggles

The PVS-7 is the most widely recognized and dependable United States Military Night Vision goggle system available. The AN/ PVS-7B/ D system has proven itself in combat due to its rugged, ergonomic design.

The PVS-7 can be equipped with high-performance Gen 2+ and Gen 3 variants of image intensifier tubes, using either Green phosphor or "Quick Silver" and "Ghost" image intensifier tubes, which provide users with natural black & white night vision image.

The PVS-7 is equipped with Automatic Brightness Control (ABC), which automatically adjusts the brightness of the image tube to achieve the highest quality image resolution under varying light conditions, as well as a built-in infrared illuminator that allows the user to operate in total darkness. The PVS-7 also has an excessive-light cut-off feature that protects the image tube from bright light sources, and a flip-up shut-off feature when used with the optional helmet mount assembly. The PVS-7 is equipped with two LED indicators: yellow for a low battery, and red to alert the operator that the IR illuminator is on. Both are displayed on the eyepiece screen. Lightweight, rugged, and versatile, the PVS-7 can be hand-held, mounted to headgear, and helmet-mounted. The dismantled goggle can also be used as an excellent long-range viewer with optional afocal magnifier lenses.

- Compact, rugged, waterproof design
- Head or helmet-mountable
- Auto-brightness control
- Bright light cut-off
- Built-in infrared illuminators
- Limited two-year warranty

PART NO.	MODEL	
PRODUCTS FOR US MARKET		
NAMPVS700123DI1	PVS-7 ID – Gen 2+ "Improved Definition"	
NAMPVS700123DH1	PVS-7 HD – Gen 2+ "High-Definition"	
NAMPVS700133DB1	PVS-7 3 Bravo – Gen 3	
NAMPVS700133DA1	PVS-7 3 Alpha – Gen 3 High-Performance	
NAMPVS7001P3DA1	PVS-7 3P – Gen 3 High-Performance Thin-Filmed Auto-Gated IIT	
PRODUCTS FOR INTERNATIONAL MARKET*		
NAMPVS700133EA1	PVS-7 3E – Gen 3	▲ ITAR
NAMPVS700133NA1	PVS-7 3N – Gen 3 High Performance	▲ ITAR
ACCESSORIES		
ANHM000005	Norotos MICH Helmet Mount Assembly USA #107	
ANHM000006	Norotos PASGT Helmet Mount Assembly USA #108	
ANAF3X0003	3x A-Focal Mil-Spec Lens #99	
ANAF3X000P	3x A-Focal Lens #22 with Adapter #24/#25	
ANAF5X000P	5x A-Focal Lens with Adapter #24/#25	
ANAMRF0003	ARFS3 - Advanced Range-Finding Stadia for 3x A-Focal Lens	
ANAMRF0005	ARFS5 - Advanced Range-Finding Stadia for 5x A-Focal Lens	
ANKI000032	AIM PRO - Advanced Integrated Mount Pro	
ANKI000049	AIM PRO-L - Advanced Integrated Mount Pro Long	
ANKI000046	Adapter Ring #62 - Adapter Ring to attach PVS-14 onto AIM-Pro and AIM-Pro-L	
ANKIXLR017	IR850-XLR Detachable X-Long-Range Infrared Illuminator w/Dovetail to Weaver Transfer Piece #21, Rechargeable Battery, and Charger	
ANAF18XLRM	IR850XLR Doubler - Enhances performance of IR850-XLR Illuminator	
ANHCO00001	Hard Shipping/ Storage Case #101	

*These items are export-controlled, please see page 2



ARMASIGHT by FLIR **N-15**

Night Vision Goggles

The N-15 Night Vision goggle system can withstand saltwater, rain, high humidity, temperature extremes, and still provide unsurpassed levels of performance.

For hands-free use, it can be worn on the included flip-up head mount or optional universal helmet mount, both of which have a built-in mechanism that will automatically turn the unit off when it is flipped up. The N-15 goggle is equipped with automatic brightness control, bright light shut-off circuitry, and a spot/flood built-in IR illuminator. The dismounted goggle can also be utilized as an excellent long-range viewer with an optional 3x afocal lens.

The N-15 utilizes two image intensifier tubes. This dual tube design provides increased depth perception and outstanding clarity. The N-15 can be equipped with high-performance Gen 2+ and Gen 3 IITs including Green phosphor, or "Quick Silver" and "Ghost" IITs, which provide users with natural black & white Night Vision displays.

- Compact and lightweight, rugged design
- True stereoscopic vision
- Head or helmet-mountable
- Built-in infrared illuminator with flood lens
- Limited two-year warranty

PART NO.	MODEL	
PRODUCTS FOR US MARKET		
NSGN15000126DS1	N-15 SD – Gen 2+ "Standard Definition"	
NSGN15000126DI1	N-15 ID – Gen 2+ "Improved Definition"	
NSGN15000126DH1	N-15 HD – Gen 2+ "High-Definition"	
NSGN150001Q6DI1	N-15 QS – Gen 2+ "Quick Silver" White Phosphor	
NSGN15000136DB1	N-15 3 Bravo – Gen 3	
NSGN15000136DA1	N-15 3 Alpha – Gen 3 High-Performance	
NSGN150001P6DA1	N-15 3P – Gen 3 High-Performance Thin-Filmed Auto-Gated IIT	
NSGN150001G6DA1	N-15 Ghost – Gen 3 "Ghost" White Phosphor	
NSGN150001F6DA1	N-15 FLAG – "FLAG" Filmless Auto-Gated IIT (Advertised by competition as Gen 4)	
PRODUCTS FOR INTERNATIONAL MARKET*		
NSGN15000126IS1	N-15 SDi – Gen 2+ "Standard Definition"	
NSGN15000126II1	N-15 IDi – Gen 2+ "Improved Definition"	
NSGN15000126IH1	N-15 HDi – Gen 2+ "High Definition"	
NSGN150001Q6II1	N-15 QSi – Gen 2+ "Quick Silver" White Phosphor	
NSGN150001G6EA1	N-15 Ghost E – Gen 3 "Ghost" White Phosphor	▲ ITAR
NSGN15000136EA1	N-15 3E – Gen 3	▲ ITAR
NSGN15000136NA1	N-15 3N – Gen 3 High Performance	▲ ITAR
ACCESSORIES		
ANAF3X0N15	N15 A-Focal 3x Lens Kit (includes 2 lenses)	
ANHM000001	Helmet Mount #4 (MICH/PASGT)	
ANHM000147	Swing Arm #147 - Mini Rail Adapter to Bayonet Mount	
ANHM000194	Swing Arm #194 - Mini Rail to Dovetail Adapter	
ANKIXLR017	IR850-XLR Detachable X-Long-Range Infrared Illuminator w/Dovetail to Weaver Transfer Piece #21, Rechargeable Battery, and Charger	
ANAF18XLRM	IR850XLR Doubler - Enhances performance of IR850-XLR Illuminator	
ANHC000001	Hard Shipping/ Storage Case #101	

*These items are export-controlled, please see page 2



ARMASIGHT by FLIR **EAGLE**

Night Vision Binoculars

The Eagle Night Vision binoculars are high-tech, tough, and durable. They deliver great performance, but at the lowest possible cost. Packed with features, the Eagle is a unit that is equally as appropriate for the hunter as it is for the professional security officer or law enforcement professional. Despite its low cost, the Eagle features automatic brightness control, bright light shut-off circuitry, and a built-in IR illuminator.

The Eagle is a Night Vision workhorse that will satisfy the requirements and expectations of the most demanding professionals and casual Night Vision users.

- 3.5x magnification
- Redundant dual-tube design
- Utilizes single CR123A lithium battery or AA alkaline, adapter included
- IR850-XLR detachable extra-long-range infrared illuminator
- Limited two-year warranty

PART NO.	MODEL
PRODUCTS FOR US MARKET	
NSBEAGLE032GDS1	Eagle SD –Gen 2+ "Standard Definition"
NSBEAGLE032GDI1	Eagle ID –Gen 2+ "Improved Definition"
NSBEAGLE032QGD11	Eagle QS –Gen 2+ "Quick Silver" White Phosphor
PRODUCTS FOR INTERNATIONAL MARKET*	
NSBEAGLE032GIS1	Eagle SDi –Gen 2+; "Standard Definition"
NSBEAGLE032GII1	Eagle IDi –Gen 2+; "Improved Definition"
NSBEAGLE032QGI11	Eagle QSi –Gen 2+; "Quick Silver" White Phosphor
ACCESSORIES	
ANAF18XLRM	IR850XLR Doubler - Enhances performance of IR850-XLR Illuminator

*These items are export-controlled, please see page 2



ARMASIGHT by FLIR **DISCOVERY**

Night Vision Bi-Ocular

The Discovery is the ultimate long-range Night Vision observation device.

Providing enhanced performance and a highly ergonomic body, the Discovery enables users to view long distances comfortably for extended periods of time. The Discovery is the perfect tool for perimeter security, observing nature, and performing long-range surveillance.

Equipped with brand new, high-performance image intensifier tubes, our Discovery binoculars can be hand-held or mounted onto a tripod. The Discovery can be equipped with high-performance Gen 2+ and Gen 3 IITs, including Green phosphor or "Quick Silver" and "Ghost" IITs, which provide users with natural black & white Night Vision displays. The Discovery is equipped with Automatic Brightness Control (ABC), which automatically adjusts the brightness of the image tube to achieve the highest quality image resolution under varying light conditions.

Available in 5X and 8X models, the Discovery is fitted with a detachable extra-long-range infrared illuminator and advanced electronic protection circuits. With a rugged body that is both water and shock resistant, but still lightweight, the Discovery is the ideal choice for hunting, wildlife observation, law enforcement, and defense applications.

- Rugged, lightweight and versatile design
- 5x or 8x magnification
- Fast, multi-coated, all-glass optics
- Dual eye viewing system for comfortable, extended nighttime viewing sessions
- IR850-XLR detachable extra-long-range infrared illuminator
- Tripod-mountable
- Limited two-year warranty



PART NO.	MODEL
PRODUCTS FOR US MARKET	
NSBDISCOV52GDS1	Discovery 5X SD – Gen 2+ "Standard Definition"
NSBDISCOV52GDI1	Discovery 5X ID – Gen 2+ "Improved Definition"
NSBDISCOV5QGD11	Discovery 5X QS – Gen 2+ "Quick Silver" White Phosphor
NSBDISCOV523DH1	Discovery 5X HD – Gen 2+ "High-Definition"
NSBDISCOV533DB1	Discovery 5X 3 Bravo – Gen 3
NSBDISCOV533DA1	Discovery 5X 3 Alpha – Gen 3 High-Performance
NSBDISCOV5P3DA1	Discovery 5X 3P – Gen 3 High-Performance Thin-Filmed Auto-Gated IIT
NSBDISCOV82GDS1	Discovery 8X SD – Gen 2+ "Standard Definition"
NSBDISCOV82GDI1	Discovery 8X ID – Gen 2+ "Improved Definition"
NSBDISCOV8QGD11	Discovery 8X QS – Gen 2+ "Quick Silver" White Phosphor
NSBDISCOV823DH1	Discovery 8X HD – Gen 2+ "High-Definition"
NSBDISCOV833DB1	Discovery 8X 3 Bravo – Gen 3
NSBDISCOV833DA1	Discovery 8X 3 Alpha – Gen 3 High-Performance
NSBDISCOV8P3DA1	Discovery 8X 3P – Gen 3 High-Performance Thin-Filmed Auto-Gated IIT

PART NO.	MODEL
PRODUCTS FOR INTERNATIONAL MARKET*	
NSBDISCOV52GIS1	Discovery 5X SDi – Gen 2+ "Standard Definition"
NSBDISCOV52GII1	Discovery 5X IDi – Gen 2+ "Improved Definition"
NSBDISCOV523IH1	Discovery 5X HDi – Gen 2+ "High Definition"
NSBDISCOV5QGI1	Discovery 5X QSi – Gen 2+ "Quick Silver" White Phosphor
NSBDISCOV533EA1	Discovery 5X 3E – Gen 3 ▲ ITAR
NSBDISCOV533NA1	Discovery 5X 3N – Gen 3 High Performance ▲ ITAR
NSBDISCOV82GIS1	Discovery 8X SDi – Gen 2+ "Standard Definition"
NSBDISCOV82GII1	Discovery 8X IDi – Gen 2+ "Improved Definition"
NSBDISCOV823IH1	Discovery 8X HDi – Gen 2+ "High Definition"
NSBDISCOV8QGI1	Discovery 8X QSi – Gen 2+ "Quick Silver" White Phosphor
NSBDISCOV833EA1	Discovery 8X 3E – Gen 3 ▲ ITAR
NSBDISCOV833NA1	Discovery 8X 3N – Gen 3 High Performance ▲ ITAR
ACCESSORIES	
ANAMTM0003	Tripod with a Grip
ANAF18XLRM	IR850XLR Doubler - Enhances performance of IR850-XLR Illuminator
ANHCO00004	Hard Shipping/ Storage Case #102

*These items are export-controlled, please see page 2



ARMASIGHT by FLIR **JANUS[®]**

Day/Night Digital Bi-Ocular

If you need a professional grade Day/Night Digital Bi-Ocular for law enforcement use, bird watching, hunting, security, nature observation, or water sports, look no further. The Janus is a professional Day/Night Digital Bi-Ocular with optical 10x or 15x magnification.

Sensitive to both near-infrared and visible light, the high performance CCD imaging system of the Janus provides around-the-clock observation. The Janus is effective regardless of light conditions – in daylight, natural lighting, and at nighttime.

Key features include: wireless remote control, detachable wide-angle adjustable long-range illuminator, and an optional Digital Recorder with SD card. The Janus is equipped with a standard NTSC/PAL video output function that makes it possible to connect to an external video monitor, or to record images for field documentation or training purposes. The device uses the same multi-pin connector to connect the optional digital video recorder and external power access.

Whether you want to use it for camping, hunting, law enforcement, boating, or security, the Janus will help you look out into the night, revealing a whole new world previously hidden by darkness.

- Day/Night digital bi-ocular
- HD filter for high-res daytime use
- High-performance CCD camera
- IR850-XLR detachable extra long-range infrared illuminator
- Wireless remote control
- Analog video input (NTSC/PAL) and output (PAL)
- Digital video recorder with SD card (optional)
- Water resistant
- Limited two-year warranty

PART NO.	MODEL
PRODUCTS FOR US AND INTERNATIONAL MARKETS*	
DABJANBBX10PAL1	Janus 10X - High-Performance 10x Day/Night Digital Binocular
DABJANBBX15PAL1	Janus 15X - High-Performance 15x Day/Night Digital Binocular
ACCESSORIES	
ATVR000002	IRIS Wireless Head Mounted Display for High-Performance Digital and Thermal Devices
ANAF18XLRM	IR850XLR Doubler - Enhances performance of IR850-XLR Illuminator
ATAM000005	HD DVR - High-Definition Digital Recorder
ATAM000008	Extended Battery Pack - Extended Battery Pack with Rechargeable Batteries
ANHCO00004	Hard Shipping/ Storage Case #102
IALA00AMRF22001	AMRF2200 - Advanced Modular (Laser) Rangefinder for LFR Clip-On systems, and High-Performance Digital and Thermal devices
ANAMTM0003	Tripod with a Grip

*These items are export-controlled, please see page 2



ARMASIGHT by FLIR **VAMPIRE™**

Night Vision Weapon Sight

The Vampire is built using our new, proprietary CORE™ (Ceramic Optical Ruggedized Engine) image tube, which includes double the resolution of Gen 1 devices. This provides flatter, clearer Night Vision images. The CORE™ platform offers 'best in class' resolution with 60-70 lp/mm, and increased photocathode sensitivity levels of upwards of 400µA/lm, providing image quality that rivals that of high-end Gen 2 image tubes, even in challenging ambient light conditions.

The body of the unit is made from solid aluminum, and is O-ring sealed and rubber coated for further protection. Like all Armasight by FLIR scopes, the Vampire is nitrogen-treated and comes complete with batteries, a soft carrying case, a user manual, and all necessary hardware for solid mounting to a standard 7/8" Picatinny or Weaver-style rail.

The Vampire has multicoated all-glass lenses and a manually adjustable fine reticle that makes precise shot placement incredibly easy. This Night Vision riflescope is also water, dust, and sand-proof for increased reliability. Complete with tactical rails for lasers or illuminators (the high-power IR illuminator is included standard), the Vampire is ideal for the game hunter, tactical marksmen, or anyone looking for a compact, sturdy, lightweight Night Vision riflescope.

- CORE technology
- Shock protected, all-glass IR transmission multicoated optics
- Illuminated reticle with brightness adjustment
- IR850-XLR detachable long-range infrared illuminator
- Water and fog-resistant design
- Mounts to standard Weaver rails
- Limited two-year warranty

PART NO.	MODEL
PRODUCTS FOR US AND INTERNATIONAL MARKETS*	
NMWWAMPIR3CCIC1	Vampire 3X - "CORE" IIT, 60-70 lp/mm
ACCESSORIES	
IAIR850IR000003	IR850-XLR - Extra Long-Range Infrared Illuminator, Rechargeable Battery, and Charger
ANAF18XLRM	IR850XLR Doubler - Enhances performance of IR850-XLR Illuminator
ANAM000045	Extended Rail Adapter #85 - Dovetail Weaver Picatinny Rail Adapter
ANHCO00004	Hard Shipping/ Storage Case #102

*These items are export-controlled, please see page 2



ARMASIGHT by FLIR **VULCAN**[®]

Night Vision Weapon Sight

Vulcan scopes represent the apex of Night Vision weapon sight technology. They include image intensifier options featuring Gen 2+ White phosphor Quick Silver, Gen 3 white phosphor Ghost, and mil-spec Gen 3P. Our new optical design sets the industry standard, and these devices are significantly more compact than before.

The Vulcan comes with a host of features, including wireless remote control, the ability to use either a CR123A or AA battery, and a quick-release Picatinny mount with locks. The Vulcan can be secured to an adjustable mount that fits Weaver or Picatinny rails, and can be mounted in seconds without tools.

The Vulcan has multicoated all-glass lenses, and an internally adjustable fine reticle that makes precise shot placement incredibly easy. This Night Vision riflescope is also water, dust, and sand-proof for increased reliability. Complete with tactical rails for lasers or illuminators (the high power IR illuminator is included as standard), the Vulcan is ideal for the dedicated game hunter, tactical marksmen, or anyone that needs a compact, lightweight Night Vision riflescope.

The Vulcan is a night vision weapon sight that provides excellent target acquisition and aiming capabilities for the demanding sports shooter, game hunter, military, law enforcement, or security personnel.

- Shock protected, all-glass IR transmission multicoated optics
- Manual variable gain control
- Illuminated reticle with brightness adjustment
- IR850-XLR detachable extra long-range infrared illuminator
- Wireless remote control included
- Powered by a single CR123A Lithium or AA battery
- Quick-release mount
- Mounts to standard Weaver rails
- Limited two-year warranty



PART NO.	MODEL
PRODUCTS FOR US MARKET	
NRWVULCAN429DS1	Vulcan 4.5X SD MG – Gen 2+ "Standard Definition"
NRWVULCAN429DI1	Vulcan 4.5X ID MG – Gen 2+ "Improved Definition"
NRWVULCAN429DH1	Vulcan 4.5X HD MG – Gen 2+ "High-Definition"
NRWVULCAN4Q9DI1	Vulcan 4.5X QS MG – Gen 2+ "Quick Silver" White Phosphor
NRWVULCAN439DB1	Vulcan 4.5X 3 Bravo MG – Gen 3
NRWVULCAN439DA1	Vulcan 4.5X 3 Alpha MG – Gen 3 High-Performance
NRWVULCAN4P9DA1	Vulcan 4.5X 3P MG – Gen 3 High-Performance Thin-Filmed Auto-Gated IIT
NRWVULCAN4G9DA1	Vulcan 4.5X Ghost MG – Gen 3 "Ghost" White Phosphor
NRWVULCAN4F9DA1	Vulcan 4.5X FLAG MG – "FLAG" Filmless Auto-Gated IIT (Advertised by competition as Gen 4)
NRWVULCAN629DS1	Vulcan 6x SD MG – Gen 2+ "Standard Definition"
NRWVULCAN629DI1	Vulcan 6x ID MG – Gen 2+ "Improved Definition"
NRWVULCAN629DH1	Vulcan 6x HD MG – Gen 2+ "High-Definition"
NRWVULCAN6Q9DI1	Vulcan 6X QS MG – Gen 2+ "Quick Silver" White Phosphor
NRWVULCAN639DB1	Vulcan 6X 3 Bravo MG – Gen 3
NRWVULCAN639DA1	Vulcan 6X 3 Alpha MG – Gen 3 High-Performance
NRWVULCAN6P9DA1	Vulcan 6X 3P MG – Gen 3 High-Performance Thin-Filmed Auto-Gated IIT
NRWVULCAN6G9DA1	Vulcan 6X Ghost MG – Gen 3 "Ghost" White Phosphor
NRWVULCAN6F9DA1	Vulcan 6X FLAG MG – "FLAG" Filmless Auto-Gated IIT (Advertised by competition as Gen 4)
NRWVULCAN829DH1	Vulcan 8x HD MG – Gen 2+ "High-Definition"
NRWVULCAN8Q9DI1	Vulcan 8X QS MG – Gen 2+ "Quick Silver" White Phosphor
NRWVULCAN839DB1	Vulcan 8X 3 Bravo MG – Gen 3
NRWVULCAN839DA1	Vulcan 8X 3 Alpha MG – Gen 3 High-Performance
NRWVULCAN8P9DA1	Vulcan 8X 3P MG – Gen 3 High-Performance Thin-Filmed Auto-Gated IIT
NRWVULCAN8G9DA1	Vulcan 8X Ghost MG – Gen 3 "Ghost" White Phosphor
NRWVULCAN8F9DA1	Vulcan 8X FLAG MG – "FLAG" Filmless Auto-Gated IIT (Advertised by competition as Gen 4)

PART NO.	MODEL
PRODUCTS FOR INTERNATIONAL MARKET*	
NRWVULCAN429IS1	Vulcan 4.5X SDi MG – Gen 2+ "Standard Definition"
NRWVULCAN429I11	Vulcan 4.5X IDi MG – Gen 2+ "Improved Definition"
NRWVULCAN429IH1	Vulcan 4.5X HDi MG – Gen 2+ "High Definition"
NRWVULCAN4Q9I11	Vulcan 4.5X QSi MG – Gen 2+ "Quick Silver" White Phosphor
NRWVULCAN4G9EA1	Vulcan 4.5X Ghost E MG – Gen 3 "Ghost" White Phosphor
NRWVULCAN439EA1	Vulcan 4.5X 3E MG – Gen 3
NRWVULCAN439NA1	Vulcan 4.5X 3N MG – Gen 3 High Performance
NRWVULCAN629IS1	Vulcan 6X SDi MG – Gen 2+ "Standard Definition"
NRWVULCAN629I11	Vulcan 6X IDi MG – Gen 2+ "Improved Definition"
NRWVULCAN629IH1	Vulcan 6X HDi MG – Gen 2+ "High Definition"
NRWVULCAN6Q9I11	Vulcan 6X QSi MG – Gen 2+ "Quick Silver" White Phosphor
NRWVULCAN6G9EA1	Vulcan 6X Ghost E MG – Gen 3 "Ghost" White Phosphor
NRWVULCAN639EA1	Vulcan 6X 3E MG – Gen 3
NRWVULCAN639NA1	Vulcan 6X 3N MG – Gen 3 High Performance
NRWVULCAN829IH1	Vulcan 8X HDi MG – Gen 2+ "High Definition"
NRWVULCAN8Q9I11	Vulcan 8X QSi MG – Gen 2+ "Quick Silver" White Phosphor
NRWVULCAN8G9EA1	Vulcan 8X Ghost E MG – Gen 3 "Ghost" White Phosphor
NRWVULCAN839EA1	Vulcan 8X 3E MG – Gen 3
NRWVULCAN839NA1	Vulcan 8X 3N MG – Gen 3 High Performance
ACCESSORIES	
IAIR850IR000003	IR850-XLR - Extra Long-Range Infrared Illuminator, Rechargeable Battery, and Charger
ANAF18XLRM	IR850XLR Doubler - Enhances performance of IR850-XLR Illuminator
ANAM000045	Extended Rail Adapter #85 - Dovetail Weaver Picatinny Rail Adapter
ANHCO00004	Hard Shipping/ Storage Case #102

*These items are export-controlled, please see page 2



ARMASIGHT by FLIR **NEMESIS**

Night Vision Weapon Sight

The Nemesis is the perfect solution for missions where the shooter requires additional distance between themselves and their target. Featuring a high-quality image intensifier tube, easy to use internal windage and elevation adjustments, and simple push button controls, the Nemesis will allow you to see beyond the expected in nighttime conditions. The Nemesis can be equipped with high-performance Green phosphor Gen 2+ IITs, or Gen 2 "Quick Silver", which provides users with natural black & white Night Vision displays.

The adjustable illuminated reticle is unique; no other Night Vision riflescope on the market has such well-defined (yet extremely thin) crosshairs that allow for this level of precise shot placement, even on exceptionally small targets. The Nemesis is fitted with a Picatinny/ Weaver mount that allows for highly accurate rail positioning, ensuring user comfort; three accessory mounting rails allow easy mounting of our included long-range IR illuminator and/or other compatible accessories. The Nemesis is water resistant, robust, lightweight, and engineered from aircraft aluminum.

- Shock-protected, all-glass IR transmission multicoated optics
- Bright source protection, Automatic Brightness Control (ABC)
- Mounts to standard Weaver rails
- Variable reticle brightness
- IR850-XLR detachable extra long-range infrared illuminator
- Limited two-year warranty

PART NO.	MODEL
PRODUCTS FOR US MARKET	
NRWNEMESI42GDS1	Nemesis 4X SD – Gen 2+ "Standard Definition"
NRWNEMESI42GDI1	Nemesis 4X ID – Gen 2+ "Improved Definition"
NRWNEMESI4QGD11	Nemesis 4X QS – Gen 2+ "Quick Silver" White Phosphor
NRWNEMESI62GDS1	Nemesis 6X SD – Gen 2+ "Standard Definition"
NRWNEMESI62GDI1	Nemesis 6X ID – Gen 2+ "Improved Definition"
NRWNEMESI6QGD11	Nemesis 6X QS – Gen 2+ "Quick Silver" White Phosphor
PRODUCTS FOR INTERNATIONAL MARKET*	
NRWNEMESI42GIS1	Nemesis 4X SDi – Gen 2+ "Standard Definition"
NRWNEMESI42GII1	Nemesis 4X IDi – Gen 2+ "Improved Definition"
NRWNEMESI4QGII1	Nemesis 4X QSi – Gen 2+ "Quick Silver" White Phosphor
NRWNEMESI62GIS1	Nemesis 6X SDi – Gen 2+ "Standard Definition"
NRWNEMESI62GII1	Nemesis 6X IDi – Gen 2+ "Improved Definition"
NRWNEMESI6QGII1	Nemesis 6X QSi – Gen 2+ "Quick Silver" White Phosphor
ACCESSORIES	
IAIR850IR000003	IR850-XLR - Extra Long-Range Infrared Illuminator, Rechargeable Battery, and Charger
ANAF18XLRM	IR850XLR Doubler - Enhances performance of IR850-XLR Illuminator
ANAM000045	Extended Rail Adapter #85 - Dovetail Weaver Picatinny Rail Adapter
ANHCO00004	Hard Shipping/ Storage Case #102

*These items are export-controlled, please see page 2



ARMASIGHT by FLIR **DRONE PRO**

Day/Night Digital Riflescope

The Drone Pro professional Day/Night Digital Riflescope is one of the most advanced scopes in its class. Sensitive to both near-infrared and visible light, the high performance CCD imaging system of the Drone PRO provides around-the-clock and all weather target detection and discrimination. The Drone PRO is effective regardless of light conditions – in daylight, natural lighting, and at nighttime. Drone Pro scope is an ideal product for professional and amateur use, such as for hunting, security, sports shooting, and nighttime observation.

Key features include: wireless remote control, detachable wide angle adjustable long-range illuminator, and a quick-release Picatinny mount with locks. The Drone PRO is equipped with a standard NTSC/PAL video output function that makes it possible to connect to an external video monitor, or to record images for field documentation or training purposes. The device uses the same multi-pin connector to connect the optional digital video recorder and external power access.

To accommodate individual user needs, the Drone PRO has a variety of digitally controlled options, including customizable display brightness, reticle pattern, and reticle color.

The quick-release mount of the Drone PRO fits any Picatinny, MIL-STD-1913, or Weaver weapon rail. The mount's lever-cam clamping device ensures easy, quick, and reliable mounting and removal.

- Day/Night digital riflescope
- HD filter for high-res daytime use
- High-performance CCD camera
- IR850-XLR detachable extra long-range infrared illuminator
- Analog video input (NTSC/PAL) and output (PAL)
- Up to 3 hours of operation on two lithium batteries
- Filled with dry nitrogen to prevent internal fogging
- Water resistant
- Limited two-year warranty

PART NO.	MODEL
PRODUCTS FOR US AND INTERNATIONAL MARKETS*	
DARDROPBB10PAL1	Drone Pro 10X - High-Performance 10x Day/Night Digital Riflescope
DARDROPBB15PAL1	Drone Pro 15X - High-Performance 15x Day/Night Digital Riflescope
ACCESSORIES	
ATVR000002	IRIS Wireless Head Mounted Display for High-Performance Digital and Thermal Devices
ANAF18XLRM	IR850XLR Doubler - Enhances performance of IR850-XLR Illuminator
ATAM000005	HD DVR - High-Definition Digital Recorder
ATAM000008	Extended Battery Pack - Extended Battery Pack with Rechargeable Batteries
ANAM000045	Extended Rail Adapter #85 - Dovetail Weaver Picatinny Rail Adapter
ANHC000004	Hard Shipping/ Storage Case #102
IALA00AMRF22001	AMRF2200 - Advanced Modular (Laser) Rangefinder for LFR Clip-On systems, and High-Performance Digital and Thermal devices
ANAMTM0003	Tripod with a Grip

*These items are export-controlled, please see page 2



ARMASIGHT by FLIR **CO-MINI**

Night Vision Clip-On System

Designed for short-to-medium range observation, the CO-MINI is the most compact commercially available Clip-On Night Vision device. The CO-MINI uses image intensification technology and is designed to convert most low-to-mid power daytime sights, scopes, or binoculars into Night Vision devices. The CO-MINI can be mounted in seconds without tools. It can be attached in front of a day rifle scope (using its quick-release Picatinny mount) or directly onto the day scope objective lens with the included adaptor.

The CO-MINI is suitable for use with most commercial and military specification daytime sights, telescopes, or binoculars (up to 6X magnification). Because the CO-MINI can be easily mounted in front of the user's existing day scope, comfort is never sacrificed, while shot release and follow-through remain accurate.

The CO-MINI is intended primarily for use by demanding hunters and in short-range warfare, where field of view and ease of use is more important than high magnification. Packed with innovative and important features like variable gain control, automatic bright light shut-off, and wireless remote control, the CO-MINI is designed to make quick, intuitive shooting just as easy at night as it is during the day.

The CO-Mini can be equipped with high-performance Gen 2+ and Gen 3 variants image intensifier tubes using Green phosphor or "Quick Silver" and "Ghost" image intensifier tubes, which provide users with natural black & white Night Vision image.

- Simple and quick conversion of daytime scope, sight or binoculars to Night Vision
- Mounts in front of rifle scope with no re-zeroing required
- Manual variable gain control
- Equipped with wireless remote control
- IR850-XLR detachable extra long-range infrared illuminator
- Powered by a single alkaline 1.5V AA or 3V CR123A lithium battery
- Quick-release mount
- Limited two-year warranty

PART NO.	MODEL
PRODUCTS FOR US MARKET	
NSCCOMINI129DI1	CO-Mini ID MG – Gen 2+ "Improved Definition"
NSCCOMINI129DH1	CO-Mini HD MG – Gen 2+ "High-Definition"
NSCCOMINI1Q9DI1	CO-Mini QS MG – Gen 2+ "Quick Silver" White Phosphor
NSCCOMINI139DB1	CO-Mini 3 Bravo MG – Gen 3
NSCCOMINI139DA1	CO-Mini 3 Alpha MG – Gen 3 High-Performance
NSCCOMINI1P9DA1	CO-Mini 3P MG – Gen 3 High-Performance Thin-Filmed Auto-Gated IIT
NSCCOMINI1G9DA1	CO-Mini Ghost MG – Gen 3 "Ghost" White Phosphor
NSCCOMINI1F9DA1	CO-Mini FLAG MG – "FLAG" Filmless Auto-Gated IIT (Advertised by competition as Gen 4) includes Manual Gain
PRODUCTS FOR INTERNATIONAL MARKET*	
NSCCOMINI129I1	CO-Mini IDi MG – Gen 2+ "Improved Definition"
NSCCOMINI129IH1	CO-Mini HDi MG – Gen 2+ "High Definition"
NSCCOMINI1Q9I1	CO-Mini QSi MG – Gen 2+ "Quick Silver" White Phosphor
NSCCOMINI1G9EA1	CO-Mini Ghost E MG – Gen 3 "Ghost" White Phosphor
NSCCOMINI139EA1	CO-Mini 3E MG – Gen 3
NSCCOMINI139NA1	CO-Mini 3N MG – Gen 3 High Performance
ACCESSORIES	
ANAM000009	Mounting System #1 for Daytime Optics with 25.4-30 mm Objective Diameter
ANAM000010	Mounting System #2 for Daytime Optics with 38-42 mm Objective Diameter
ANAM000011	Mounting System #3 for Daytime Optics with 46.7-50 mm Objective Diameter
ANAM000012	Mounting System #4 for Daytime Optics with 56-58.7 mm Objective Diameter
ANAM000013	Mounting System #6 for Daytime Optics with 62 mm Objective Diameter
ANAM000031	Weaver Mount #60 replaces QRM to weaver base for IR Illuminator
ANAM000045	Extended Rail Adapter #85 - Dovetail Weaver Picatinny Rail Adapter
ANH000004	Hard Shipping/ Storage Case #102
ANAF18XLRM	IR850XLR Doubler - Enhances performance of IR850-XLR Illuminator

*These items are export-controlled, please see page 2



ARMASIGHT by FLIR **CO-X**

Night Vision Clip-On System

The CO-X is one of the most advanced Night Vision Clip-On systems for mid-range night shooting on the market today, and truly stands out from the competition when it comes to clarity, versatility, reliability, function, and value.

The CO-X converts your existing day scope into a Night Vision device, providing excellent target acquisition and aiming capabilities for the demanding sports shooter, hunter, military professional, or law enforcement and security personnel. The CO-X simply mounts in front of your existing day scope, with no re-zeroing required.

The CO-X is fitted with a locking, quick-disconnect mounting system, which provides the user with a simple, fast way to attach or detach the unit on any standard Weaver or Picatinny rail. The CO-X is recommended for use with day scopes of up to 6X magnification.

- Simple, quick conversion of daytime scope to Night Vision device
- Mounts in front of any daytime scope, no re-zeroing required
- Fast catadioptric front lens system
- IR850-XLR detachable extra long-range infrared illuminator
- Quick-release mount
- Limited two-year warranty

PART NO.	MODEL
PRODUCTS FOR US MARKET	
NSSCCOX00012MDS1	CO-X SD MG – Gen 2+ "Standard Definition" with Manual Gain
NSSCCOX00012MDI1	CO-X ID MG – Gen 2+ "Improved Definition" with Manual Gain
NSSCCOX0001QMDI1	CO-X QS MG – Gen 2+ "Quick Silver" White Phosphor with Manual Gain
NSSCCOX00012MDH1	CO-X HD MG – Gen 2+ "High-Definition" with Manual Gain
NSSCCOX000133DB1	CO-X 3 Bravo – Gen 3
NSSCCOX000133DA1	CO-X 3 Alpha – Gen 3 High-Performance
NSSCCOX0001P3DA1	CO-X 3P – Gen 3 High-Performance Thin-Filmed Auto-Gated IIT
PRODUCTS FOR INTERNATIONAL MARKET*	
NSSCCOX00012MIS1	CO-X SDi MG – Gen 2+ "Standard Definition" with Manual Gain
NSSCCOX00012MI1	CO-X IDi MG – Gen 2+ "Improved Definition" with Manual Gain
NSSCCOX0001QMI1	CO-X HDi MG – Gen 2+; "High-Definition" with Manual Gain
NSSCCOX00012MIH1	CO-X QSi MG – Gen 2+ "Quick Silver" White Phosphor with Manual Gain
NSSCCOX0001GGEA1	CO-X Ghost E MG – Gen 3 "Ghost" White Phosphor with Manual Gain
NSSCCOX000133EA1	CO-X 3E – Gen 3
NSSCCOX000133NA1	CO-X 3N – Gen 3 High Performance
ACCESSORIES	
ANAM000009	Mounting System #1 for Daytime Optics with 25.4-30 mm Objective Diameter
ANAM000010	Mounting System #2 for Daytime Optics with 38-42 mm Objective Diameter
ANAM000011	Mounting System #3 for Daytime Optics with 46.7-50 mm Objective Diameter
ANAM000012	Mounting System #4 for Daytime Optics with 56-58.7 mm Objective Diameter
ANAM000013	Mounting System #6 for Daytime Optics with 62 mm Objective Diameter
ANAM000031	Weaver Mount #60 replaces QRM to weaver base for IR Illuminator
ANAM000045	Extended Rail Adapter #85 - Dovetail Weaver Picatinny Rail Adapter
ANHCO00004	Hard Shipping/ Storage Case #102
ANAF18XLRM	IR850XLR Doubler - Enhances performance of IR850-XLR Illuminator

*These items are export-controlled, please see page 2



ARMASIGHT by FLIR **CO-LR**

Night Vision Clip-On System

The CO-LR (Clip On – Long Range) is a night vision unit that mounts in front of any existing day scope, converting the scope into a night vision-capable device with a viewing range of up to 1000 yards. Suitable for use with most commercial and military specification daytime scopes (up to 12X magnification), the CO-LR can be mounted/dismounted on any standard Picatinny rail in seconds, with no special tools required. Because the CO-LR can be mounted to an existing day scope, no re-zeroing is required. The CO-LR allows the user to maintain consistent positioning and shooting accuracy, all while using a completely familiar day scope.

The CO-LR is packed with innovative features like variable gain control, bright light shut-off, and a wireless remote control. This Night Vision Clip-On is designed to make long-range night shooting just as easy and accurate as daytime shooting in the same terrain.

- Simple and quick conversion of a day scope to Night Vision device
- Mounts in front of riflescope with no re-zeroing required
- Manual variable gain control
- Equipped with wireless remote control
- IR850-XLR detachable extra long-range infrared illuminator
- Powered by a single alkaline 1.5V AA or 3V CR123A lithium battery
- Bright light cut-off system
- Limited two-year warranty

PART NO.	MODEL	
PRODUCTS FOR US MARKET		
NSSCOLR00129DI1	CO-LR ID MG – Gen 2+ "Improved Definition"	
NSSCOLR00129DH1	CO-LR HD MG – Gen 2+ "High Definition"	
NSSCOLR001Q9DI1	CO-LR QS MG – Gen 2+ "Quick Silver" White Phosphor	
NSSCOLR00139DB1	CO-LR 3 Bravo MG – Gen 3	
NSSCOLR00139DA1	CO-LR 3 Alpha MG – Gen 3 High Performance	
NSSCOLR001P9DA1	CO-LR 3P MG – Gen 3 High Performance Thin-Filmed Auto-Gated IIT	
NSSCOLR001G9DA1	CO-LR Ghost MG – Gen 3 "Ghost" White Phosphor	
NSSCOLR001F9DA1	CO-LR FLAG MG – "FLAG" Filmless Auto-Gated IIT (Advertised by competition as Gen 4)	
PRODUCTS FOR INTERNATIONAL MARKET*		
NSSCOLR00129II1	CO-LR IDi MG – Gen 2+ "Improved Definition"	
NSSCOLR00129IH1	CO-LR HDi MG – Gen 2+ "High Definition"	
NSSCOLR001Q9II1	CO-LR QSi MG – Gen 2+ "Quick Silver" White Phosphor	
NSSCOLR001G9EA1	CO-LR Ghost E MG – Gen 3 "Ghost" White Phosphor	▲ ITAR
NSSCOLR00139EA1	CO-LR 3E MG – Gen 3	▲ ITAR
NSSCOLR00139EN1	CO-LR 3N MG – Gen 3 High Performance	▲ ITAR
ACCESSORIES		
ANAF18XLRM	IR850XLR Doubler - Enhances performance of IR850-XLR Illuminator	
ANAM000021	FSRS (Front Scope Rail System) #38 - Mounts Clip-On Day/ Night system to firearm	
ANAM000045	Extended Rail Adapter #85 - Dovetail Weaver Picatinny Rail Adapter	
ANHCO00004	Hard Shipping/ Storage Case #102	

*These items are export-controlled, please see page 2



ARMASIGHT by FLIR **CO-LR-LRF[†]**

Night Vision Clip-On System

The CO-LR (Clip On – Long Range) is a night vision unit that mounts in front of any existing day scope, converting the scope into a night vision-capable device with a viewing range of up to 1000 yards. Suitable for use with most commercial and military specification daytime scopes (up to 12X magnification), the CO-LR can be mounted/dismounted on any standard Picatinny rail in seconds, with no special tools required. Because the CO-LR can be mounted to an existing day scope, no re-zeroing is required. The CO-LR allows the user to maintain consistent positioning and shooting accuracy, all while using a completely familiar day scope.

The CO-LR is packed with innovative features like variable gain control, bright light shut-off, and a wireless remote control. This Night Vision Clip-On is designed to make long-range night shooting just as easy and accurate as daytime shooting in the same terrain.

The CO-LR LRF can be used with a laser range finder (AMRF2200). Distance measurements are displayed on the rangefinders indicator and in the field of view (FOV) of the connected Night Vision device.

- Simple and quick conversion of a day scope to Night Vision device
- Mounts in front of riflescope with no re-zeroing required
- Precise (1 m resolution) laser rangefinder
- Manual variable gain control
- Equipped with wireless remote control
- IR850-XLR detachable extra long-range infrared illuminator
- Powered by a single alkaline 1.5V AA or 3V CR123A lithium battery
- Bright light cut-off system
- Limited two-year warranty

PART NO.	MODEL
PRODUCTS FOR US MARKET	
NSCCOLRF0129DI1	CO-LR-LRF ID MG – Gen 2+ "Improved Definition"; Laser Rangefinder Capabilities [†]
NSCCOLRF0129DH1	CO-LR-LRF HD MG – Gen 2+ "High-Definition"; Laser Rangefinder Capabilities [†]
NSCCOLRF01Q9DI1	CO-LR-LRF QS MG – Gen 2+ "Quick Silver" White Phosphor; Laser Rangefinder Capabilities [†]
NSCCOLRF0139DA1	CO-LR-LRF 3 Alpha MG – Gen 3 High-Performance; Laser Rangefinder Capabilities [†]
NSCCOLRF01P9DA1	CO-LR-LRF 3P MG – Gen 3 High-Performance Thin-Filmed Auto-Gated IIT; Laser Rangefinder Capabilities [†]
NSCCOLRF01G9DA1	CO-LR-LRF Ghost MG – Gen 3 "Ghost" White Phosphor; Laser Rangefinder Capabilities [†]
NSCCOLRF01F9DA1	CO-LR-LRF FLAG MG – "FLAG" Filmless Auto-Gated IIT (Advertised by competition as Gen 4); Laser Rangefinder Capabilities [†]
PRODUCTS FOR INTERNATIONAL MARKET*	
NSCCOLRF0129II1	CO-LR-LRF IDi MG – Gen 2+ "Improved Definition"; Laser Rangefinder Capabilities [†]
NSCCOLRF0129IH1	CO-LR-LRF HDi MG – Gen 2+ "High Definition"; Laser Rangefinder Capabilities [†]
NSCCOLRF01Q9II1	CO-LR-LRF QSi MG – Gen 2+ "Quick Silver" White Phosphor; Laser Rangefinder Capabilities [†]
NSCCOLRF01G9EA1	CO-LR-LRF Ghost E MG – Gen 3 "Ghost" White Phosphor; Laser Rangefinder Capabilities [†] ▲ ITAR
NSCCOLRF0139EA1	CO-LR-LRF 3E MG – Gen 3; Laser Rangefinder Capabilities [†] ▲ ITAR
NSCCOLRF0139NA1	CO-LR-LRF 3N MG – Gen 3 High Performance; Laser Rangefinder Capabilities [†] ▲ ITAR
ACCESSORIES	
IALA00AMRF22001	AMRF2200 - Advanced Modular (Laser) Rangefinder for LFR Clip-On systems, and High-Performance Digital and Thermal devices
ANAF18XLRM	IR850XLR Doubler - Enhances performance of IR850-XLR Illuminator
ANAM000021	FSRS (Front Scope Rail System) #38 - Mounts Clip-On Day/ Night system to firearm
ANAM000045	Extended Rail Adapter #85 - Dovetail Weaver Picatinny Rail Adapter
ANH000004	Hard Shipping/ Storage Case #102

*These items are export-controlled, please see page 2

[†] Laser Rangefinder is sold separately



ARMASIGHT by FLIR **CO-XLR-LRF™**

Night Vision Clip-On System

The CO-XLR LRF, the most advanced Night Vision Clip-On in the series, pushes the boundaries of night vision systems further than they've ever gone. The CO-XLR LRF (Clip On – Extra Long-Range) is a night vision unit that mounts in front of any existing day scope, converting the scope into a night vision-capable device with a viewing range of up to 1,500 yards. Suitable for use with most commercial and military specification daytime scopes (up to 16X magnification), the CO-XLR LRF can be mounted/dismounted on any standard Picatinny rail in seconds, with no special tools required. Because the CO-XLR LRF can be mounted in front of your existing day scope, no re-zeroing is required. The CO-XLR LRF allows the user to maintain consistent positioning and shooting accuracy, all while maintaining the use of a fully familiar day scope.

The CO-XLR LRF housing is designed to withstand any environmental condition. The CO-XLR LRF is packed with innovative features like variable gain control, bright light shutoff, and wireless remote control. This Night Vision Clip-On is designed to make long-range night shooting just as easy and accurate as daytime shooting in the same terrain.

The CO-XLR LRF can be used with a laser range finder (AMRF2200). Distance measurements are displayed on the rangefinders indicator and in the field of view (FOV) of the connected Night Vision device.

- Simple and quick conversion of any day scope into a Night Vision device
- Mounts in front of riflescope with no re-zeroing required
- Precise (1m resolution) laser rangefinder capability
- Equipped with wireless remote control
- Manual variable gain control
- IR850-XLR detachable extra long-range infrared illuminator
- Powered by a single alkaline 1.5V AA or 3V CR123A lithium battery
- Quick-release mount
- Bright light cut-off system
- Limited two-year warranty

PART NO.	MODEL
PRODUCTS FOR US MARKET	
NSSCCOXLRF129DH1	CO-XLR-LRF HD MG – Gen 2+ "High-Definition"; Laser Rangefinder Capabilities†
NSSCCOXLRF1Q9DI1	CO-XLR-LRF QS MG – Gen 2+ "Quick Silver" White Phosphor; Laser Rangefinder Capabilities†
NSSCCOXLRF139DA1	CO-XLR-LRF 3 Alpha MG – Gen 3 High-Performance; Laser Rangefinder Capabilities†
NSSCCOXLRF1P9DA1	CO-XLR-LRF 3P MG – Gen 3 High-Performance Thin-Filmed Auto-Gated IIT; Laser Rangefinder Capabilities†
NSSCCOXLRF1G9DA1	CO-XLR-LRF Ghost MG – Gen 3 "Ghost" White Phosphor; Laser Rangefinder Capabilities†
NSSCCOXLRF1F9DA1	CO-XLR-LRF FLAG MG – "FLAG" Filmless Auto-Gated IIT (Advertised by competition as Gen 4); Laser Rangefinder Capabilities†
PRODUCTS FOR INTERNATIONAL MARKET*	
NSSCCOXLRF129IH1	CO-XLR-LRF HDi MG – Gen 2+ "High Definition"; Laser Rangefinder Capabilities†
NSSCCOXLRF1Q9I1	CO-XLR-LRF QSi MG – Gen 2+ "Quick Silver" White Phosphor; Laser Rangefinder Capabilities†
NSSCCOXLRF1G9EA1	CO-XLR-LRF Ghost E MG – Gen 3 "Ghost" White Phosphor; Laser Rangefinder Capabilities† 
NSSCCOXLRF139EA1	CO-XLR-LRF 3E MG – Gen 3; Laser Rangefinder Capabilities† 
NSSCCOXLRF139NA1	CO-XLR-LRF 3N MG – Gen 3 High Performance; Laser Rangefinder Capabilities† 
ACCESSORIES	
IALA00AMRF22001	AMRF2200 - Advanced Modular (Laser) Rangefinder for LRF Clip-On systems, and High-Performance Digital and Thermal devices
ANAF18XLRM	IR850XLR Doubler - Enhances performance of IR850-XLR Illuminator
ANAM000021	FSRS (Front Scope Rail System) #38 - Mounts Clip-On Day/ Night system to firearm
ANAM000045	Extended Rail Adapter #85 - Dovetail Weaver Picatinny Rail Adapter
ANHCO00004	Hard Shipping/ Storage Case #102

*These items are export-controlled, please see page 2

†Laser Rangefinder is sold separately



ARMASIGHT by FLIR **IR850-XLR**

Long-Range IR Illuminator

Armasight IR850-XLR extra long-range infrared illuminator provides greater image-intensified viewing capabilities for operations in little to no ambient light.

The powerful IR850-XLR model comes standard equipped with a rechargeable battery and charger unit. An optional A-Focal doubler for IR850-XLR doubles the distance of IR beam for ultra-long-distance observation.

Our infrared illuminators provide wide-range beam angle adjustment, which drastically improves the performance of the IR illuminator and extends the user's nighttime visibility range.

- Powerful, long-range infrared illuminator
- High power, IR-emitting diode
- Precise adjustment of beam direction
- Invisible to the human eye
- Can be mounted on the Weaver rail or used as a handheld device

SPECS

IR EMITTER TYPE	LED
POWER	1,000 mW
COMPATIBLE NIGHT VISION DEVICES:	Gen 1, CORE, Gen2, Gen 3, Digital
ILLUMINATION RANGE	Up to 1,000 m
OVERALL DIMENSIONS (W/O MOUNT)	150 × 46 × 46 mm (5.9 × 1.8 × 1.8in)
WEIGHT (W/O MOUNT AND BATTERY)	210 g (7.4 oz)

PART NO.	MODEL
IAIR850IR000003	IR850-XLR - Extra Long-Range Infrared Illuminator, Rechargeable Battery, and Charger *
ACCESSORIES	
ANAF18XLRM	IR850XLR Doubler - Enhances performance of IR850-XLR Illuminator
ANRA000001	Dovetail #21 - Weaver Transfer Piece to attach IR Illuminator
ANAM000182	Riser for IR850-XLR (20 mm) #182
ANAM000181	Riser for IR850-XLR (30 mm) #181
ANAM000180	Riser for IR850-XLR (40 mm) #180

*These items are export-controlled, please see page 2



ARMASIGHT by FLIR **MSI8000**

Universal Long-Range Flashlight

MSI8000 includes everything you need to recover your game after the sun goes down. You can choose IR or white interchangeable LED module for your intended game. Flashlight with a 3 power modes (low, medium and high) provides a powerful, focusable circle of light.

MSI8000 comes standard equipped with a rechargeable battery and charger unit. Optional Weapon Kit includes a wireless remote control and weapon mount. An optional Afocal Doubler doubles the distance of illumination for ultra-long-distance observation.

- Interchangeable LED modules (IR, White)
- Power adjustment
- Wide-range beam angle adjustment
- Can be used as a hand-held device or mounted on the Weaver rail

SPECS	IR	WHITE
IR EMITTER TYPE	LED	LED
OUTPUT	1300 mW	610 lm
PEAK WAVELENGTH	850 nm	--
ILLUMINATION RANGE	Up to 1000 m	
SIZE	180x46x46 mm (7.1x1.8x1.8 in)	
WEIGHT (W/O BATTERY)	262 g (9.2 oz)	

PART NO.	MODEL
IAIFAION000001	MSI8000 - Extra Long-Range Multi Functional Flashlight (comes standard with "White Light" and "Infrared Illuminator" replacements)*
ACCESSORIES	
ANAMMF001	Weapon Kit
ANAF18XLRM	Doubler - Enhances performance of MSI8000 Illuminator

*These items are export-controlled, please see page 2



NIGHT VISION MONOCULARS SPECIFICATIONS



	AVENGER 10X	SPARK	SPARK-G	SIRIUS	PVS-14	N-14
GENERATION	Day/Night Digital	CORE	CORE	Gen 2+	Gen 2+; Gen 3; FLAG	Gen 2+; Gen 3; FLAG
MAGNIFICATION	10x	1x	1x	1x	1x	1x
LENS SYSTEM	192 mm; F/2.13	35mm; F/1.7	35 mm; F/1.7	24mm; F/1.2	26mm; F/1.2	27 mm; F/1.3
FIELD OF VIEW	5.2°	35°	35°	40°	40°	40°
POWER	CR123 lithium 3V (1) or AA alkaline 1.5V (1), Up to 60 hours	CR123 lithium 3V (1), Up to 40 hours	CR123 lithium 3V (1), Up to 40 hours	CR123 lithium 3V (1) or AA alkaline 1.5V (1), Up to 60 hours	AA alkaline 1.5V (1), Up to 50 hours	CR123 lithium 3V (1) or AA alkaline 1.5V (1), Up to 60 hours
DIMENSIONS	288 × 100 × 100 mm (11.3 × 3.9 × 3.9 in)	149 × 49 × 82 mm (5.8 × 1.9 × 3.2 in)	149 × 49 × 82 mm (5.8 × 1.9 × 3.2 in)	157 × 60 × 75 mm (6.2 × 2.4 × 2.9 in)	114 × 51 × 57 mm (4.5 × 2.0 × 2.2 in)	115 × 49 × 71 mm (4.6 × 1.9 × 2.8 in)
WEIGHT	1.33 kg (2.9 lb)	0.37 kg (0.8 lb)	0.37 kg (0.82 lb)	0.46 kg (1.0 lb)	0.35 kg (0.77 lb)	0.38 kg (0.84 lb)

NIGHT VISION GOGGLES SPECIFICATIONS



SPECS	NYX-7	NYX-7 PRO	PVS-7	N-15
GENERATION	Gen 2+	Gen 2+; Gen 3	Gen 2+; Gen 3	Gen 2+; Gen 3; FLAG
MAGNIFICATION	1x	1x	1x	1x
LENS SYSTEM	24mm; F/1.2	27mm; F/1.2	27mm; F/1.2	27 mm; F/1.2
FIELD OF VIEW	40°	40°	40°	40°
POWER	CR123 lithium 3V (1) or AA alkaline 1.5V (1), Up to 60 hours	CR123 lithium 3V (1) or AA alkaline 1.5V (1), Up to 60 hours	AA alkaline 1.5V (2), Up to 40 hours	CR123 lithium 3V (1) or AA alkaline 1.5V (1), Up to 40 hours
DIMENSIONS	150 × 102 × 70 mm (5.9 × 4.0 × 2.7 in)	165 × 120 × 61 mm (6.5 × 4.7 × 2.4 in)	162 × 152 × 76 mm (6.4 × 6.0 × 3.0 in)	117 × 114 × 69 mm (4.6 × 4.5 × 2.7 in)
WEIGHT	0.45 kg (0.9 lb)	0.49 kg (1.0 lb)	0.68 kg (1.5 lb)	0.7 kg (1.5 lb)

NIGHT VISION BINOCULARS SPECIFICATIONS



SPECS	EAGLE	DISCOVERY 5X	DISCOVERY 8X	JANUS 10X	JANUS 15X
GENERATION	Gen 2+	Gen 2+; Gen 3	Gen 2+; Gen 3	Day/Night Digital	Day/Night Digital
MAGNIFICATION	3.5x	5x	8x	10x	15x
LENS SYSTEM	80 mm; F/1.65	108 mm; F/1.5	160 mm; F/2.0	108 mm; F/1.54	145 mm; F/1.8
FIELD OF VIEW	14°	9.5°	6.5°	2.6° × 2°	2° × 1.5°
POWER	CR123 lithium 3V (1) or AA alkaline 1.5V (1), Up to 60 hours	CR123 lithium 3V (1), Up to 50 hours	CR123 lithium 3V (1), Up to 50 hours	CR123 lithium 3V (2), Up to 3 hours	CR123 lithium 3V (2), Up to 3 hours
DIMENSIONS	235 × 120 × 75 mm (9.2 × 4.7 × 2.9 in)	305 × 140 × 86 mm (12.0 × 5.5 × 3.4 in)	350 × 140 × 100 mm (13.8 × 5.5 × 3.9 in)	316 × 100 × 76 mm (12.4 × 3.9 × 3.0 in)	344 × 102 × 91 mm (13.5 × 4.0 × 3.6 in)
WEIGHT	1.52 kg (3.35 lb)	1.3 kg (2.8 lb)	1.5 kg (3.3 lb)	1.04 kg (2.29 lb)	1.25 kg (2.76 lb)

NIGHT VISION RIFLESCOPES SPECIFICATIONS



SPECS	VAMPIRE	NEMESIS 4X	NEMESIS 6X	VULCAN 4.5X
GENERATION	CORE	Gen 2+	Gen 2+	Gen 2+; Gen 3; FLAG
MAGNIFICATION	3x	4x	6x	4.5x
LENS SYSTEM	108 mm; F/1.5	108 mm; F/1.5	160 mm; F/2.0	108 mm; F/1.54
FIELD OF VIEW	10.5°	10°	6.5°	9°
POWER	CR123 lithium 3V (1)	CR123 lithium 3V (1), Up to 60 hours	CR123 lithium 3V (1), Up to 60 hours	CR123 lithium 3V (1) or AA alkaline 1.5V (1), Up to 60 hours
DIMENSIONS	275 × 87 × 95 mm (10.8 × 3.4 × 3.7 in)	305 × 102 × 71 mm (12 × 4 × 2.8 in)	388 × 102 × 71 mm (15.3 × 4 × 2.8 in)	204 × 97 × 91 mm (8.0 × 3.8 × 3.6 in)
WEIGHT	1.36 kg (3 lb)	1.2 kg (2.7 lb)	1.9 kg (4.2 lb)	1.08 kg (2.4 lb)

NIGHT VISION RIFLESCOPES SPECIFICATIONS



SPECS	VULCAN 6X	VULCAN 8X	DRONE PRO 10X	DRONE PRO 15X
GENERATION	Gen 2+; Gen 3; FLAG	Gen 2+; Gen 3; FLAG	Day/Night Digital	Day/Night Digital
MAGNIFICATION	6x	8x	10x	15x
LENS SYSTEM	145 mm; F/1.8	192 mm; F/2.13	108 mm; F/1.54	145 mm; F/1.8
FIELD OF VIEW	7°	5.4°	2.6° × 2°	2° × 1.5°
POWER	CR123 lithium 3V (1) or AA alkaline 1.5V (1), Up to 60 hours	CR123 lithium 3V (1) or AA alkaline 1.5V (1), Up to 60 hours	CR123 lithium 3V (2), Up to 3 hours	CR123 lithium 3V (2), Up to 3 hours
DIMENSIONS	238 × 104 × 95 mm (9.4 × 4.1 × 3.7 in)	310 × 108 × 103 mm (12.2 × 4.2 × 4.1 in)	260 × 85 × 76 mm (10.2 × 3.4 × 3.0 in)	290 × 91 × 107 mm (11.4 × 3.6 × 4.2 in)
WEIGHT	1.19 kg (2.6 lb)	1.43 kg (3.1 lb)	1.02 kg (2.2 lb)	1.3 kg (2.87 lb)

NIGHT VISION CLIP-ONS SPECIFICATIONS



SPECS	CO-MINI	CO-X	CO-LR / CO-LR-LRF	CO-XLR LRF
GENERATION	Gen 2+; Gen 3; FLAG	Gen 2+; Gen 3	Gen 2+; Gen 3; FLAG	Gen 2+; Gen 3; FLAG
MAGNIFICATION	1x	1x	1x	1x
LENS SYSTEM	38 mm; F/1.25	80 mm; F/1.44	108 mm; F/1.54	145 mm; F/1.8
FIELD OF VIEW	22°	12°	9°	7°
EXIT PUPIL	27.5 mm	21 mm	40 mm	40 mm
POWER	CR123 lithium 3V (1) or AA alkaline 1.5V (1), Up to 60 hours	CR123 lithium 3V (1) or AA alkaline 1.5V (1), Up to 60 hours	CR123 lithium 3V (1) or AA alkaline 1.5V (1), Up to 45 hours	CR123 lithium 3V (1) or AA alkaline 1.5V (1), Up to 45 hours
DIMENSIONS	125 × 68 × 55 mm (4.9 × 2.7 × 2.2 in)	150 × 100 × 83 mm (5.9 × 3.9 × 3.2 in)	235 × 97 × 80 mm (9.25 × 3.8 × 3.14 in)	304 × 104 × 94 mm (12.0 × 4.1 × 3.7 in)
WEIGHT	0.43 kg (0.95 lb)	0.76 kg (1.7 lb)	0.91 kg (2.0 lb)	1.3 kg (2.86 lb)



DIRECT VIEW & LASER SYSTEMS

ARMASIGHT by FLIR **AIM PRO**

Advanced Integrated Mount

ARMASIGHT by FLIR **AIM PRO-L**

Advanced Integrated Mount

The AIM PRO is the latest evolution of the Armasight by FLIR AIM. The AIM (Advanced Integrated Mount) presents a revolutionary new concept of Night Vision targeting. This Night Vision accessory allows the operator to convert the monocular into a weapon sight. The AIM is incorporated into a low-profile housing that has an integral MIL-STD-1913 Picatinny rail grabber mount on the underside, and a dovetail mount on the top. By mounting the AIM onto your rifle and fitting it with either a Night Vision monocular or AIM optional day optic, the AIM can be bore-sighted to your rifle; the operator can switch between day and night modes as required, without having to readjust.

Unlike conventional systems that require the Night Vision unit to be mounted behind a day optic, the AIM projects the reticle directly into the Night Vision monocular lens. In practice, what this means is that there is no longer a reduced field of view through the Night Vision device, or any shadowed area that is difficult to see through (caused by conventional red-dot sights optics or outer edges). A small "HUD"-type prism on the front of the AIM unit projects a 65MOA "Circle," as well as a single 3.2MOA center aiming "Dot," directly into the Night Vision lens.

The AIM PRO-L allows the user to mount a 3x Night Vision monocular directly onto their weapon for an extended shooting range.

The adaptability of the AIM PRO to virtually any Night Vision monocular inherently makes it a "critical need" item for all law enforcement and military personnel, hunters, and professional shooters.

- Converts standard Night Vision monoculars into passive Night Vision weapon sights
- AIM eliminates the need for infrared laser or co-witnessed red dot sight
- No obstructing optics or parts in your field of view
- The only solution providing 100% full field of view
- Optional 3.5x daytime aiming solution
- Fits any MIL-STD-1913 Picatinny or Weaver rails with adjustable, locking, quick-detach mount

SPECS	AIM PRO	AIM PRO-L
"CIRCLE WITH DOT" RETICLE SIZE	65±2	65±2
ADJUSTMENT PRECISION RANGE (DEG. OF ARC)	±1,5	±1,5
RETICLE ILLUMINATION ADJUSTMENTS	digital	digital
LEVELS OF RETICLE BRIGHTNESS	11	11
IMMERSION	1 m for 30 minutes	1 m for 30 minutes
OVERALL DIMENSIONS	169×87×42 mm (6.6×3.4×1.6 in)	270×87×42 mm (1.6×3.4×1.6 in)
WEIGHT	180 g (6.3 oz)	252 g (8.9 oz)
PART NO.	MODEL	
ANKI000032	AIM PRO - Advanced Integrated Mount Pro*	
ANKI000049	AIM PRO-L - Advanced Integrated Mount Pro Long*	
ACCESSORIES		
ANKI000046	Adapter Ring #62 - Adapter Ring to attach NV monocular onto AIM-Pro and AIM-Pro-L	
ANKI000048	AIM 3X Booster - Day-Time 3x Magnifier for AIM-Pro	

*These items are export-controlled, please see page 2



ARMASIGHT by FLIR **MCS**

Miniature Collimating Sight

The Armasight MCS (Miniature Collimating Sight) is a passive targeting micro LED collimating sight for rapid, “both-eyes open” target acquisition. The MCS is rugged, lightweight, and designed to mount onto a variety of existing magnified day optics as well as MIL-STD-1913 Picatinny and Weaver-style rails.

The MCS is the only sight on the market in its class that features a dual reticle pattern. The user can select a 3.5 MOA “Dot” reticle or 20 MOA “Ring” reticle pattern, depending on mission requirements. The MCS is compatible with Night Vision devices of all generations. Reticle intensity is regulated by an automatic brightness control sensor, which can also be overridden by the user to adjust the brightness mode as required.

The MCS is designed to significantly improve accuracy and efficiency of virtually any weapon, from handguns and pistols to modern sporting rifles and light machine guns. The compact size and versatility of the MCS makes it an ideal secondary/backup optical sight. Accurate and reliable, the MCS features 1.2 MOA/ click windage and 1.5 MOA/ click adjustments. A unique optical design allows for a parallax-free, “always on the center” reticle.

The unit has been tested against salt, fog, dust, vibration, and significant drops. It has also been fired from a variety of firearms for thousands of rounds. The MCS features a unique pivot lens cover with anti-reflective coating, and works on a single, easy to replace CR2032 3V battery.

- Tactile click stops for windage & elevation adjustments
- User configurable open or tube sight mode
- Riflescope-mounted or Weaver-mounted variations
- Battery change with no re-zeroing required
- Large heads-up display with wide field of view
- Limited two-year warranty

SPECS	
MAGNIFICATION	1X (unity)
EXIT PUPIL (MM)	20 × 15
INTERCHANGEABLE RETICLE PATTERN:	
- Dot (MOA)	3.5 (10 cm at 100 m)
- Circle (MOA)	20 (60 cm at 100 m)
RETICLE BRIGHTNESS ADJUSTMENT	Auto / Manual (MAX or MIN positions)
MOUNTING SYSTEM	for Picatinny Rail or for ACOG 4x32 (Trijicon) riflescope
DIMENSIONS (MM/IN):	
- Ver. for Picatinny rail	48 × 40 × 47 mm (1.9 × 1.6 × 1.8 in)
- Ver. for ACOG 4x32	48 × 44 × 52 mm (1.9 × 1.7 × 2.0 in)
WEIGHT	65 g (2.3 oz)
PART NO.	MODEL
DAS01XX25MCSBLC	MCS Black Color*
DAS01XX25MCSTAN	MCS Tan Color*
ACCESSORIES	
ANAM000017	Riser 1.5 #55 for MCS

*These items are export-controlled, please see page 2



ARMASIGHT by FLIR **DRAKOS**

Multi-spectral Laser
Aiming/Illumination Device

The Drakos is the new series of an innovative, rugged, multi-spectral Class I near-infrared and visible/ near-infrared laser aiming devices. It is designed to mount via a locking quick-release MIL-STD-1913 rail grabber, onto a variety of kinetic weapons for day, low-light, and night time targeting. The Drakos is equipped with a wireless remote control; the laser operates on either a single CR123A 3V lithium or AA 1.5V battery, and the battery compartment adapter comes standard, which provides more than two thousand two-second activations of the lasers. The Drakos series is designed to withstand the kinetic recoil of 0.50 caliber and .338 caliber Lapua ammunition. The Drakos' performance level, along with its adaptability to virtually any Night Vision device, inherently makes it a "critical need" item for all law enforcement professionals, military personnel, hunters, and professional shooters.

- Tactile click stops for windage & elevation adjustments
- Rapid active target acquisition
- True Night Vision compatible mode
- Utilizes single CR123A lithium battery or AA alkaline, adapter included
- Equipped with wireless remote control
- Quick-release mount
- Aiming lasers are co-boresighted
- Will not cause damage to eyes
- Limited two-year warranty

SPECS	DRAKOS	DRAKOS-I	DRAKOS-II
WAVELENGTH	850 nW	850 / 850 nW	850 / 650 nW
LASER OUTPUT POWER (MAX)	0.7 mW	0.7 mW	0.7 / 0.9 mW
OPERATING DISTANCE	800 m	800 m	800 / 200 m
AIMING DOT SIZE	50 mm (at 100m)	50 mm (at 100m)	50 mm (at 100m)
OVERALL DIMENSIONS	110 × 67 × 39 mm (4.3 × 2.6 × 1.5 in)	110 × 67 × 39 mm (4.3 × 2.6 × 1.5 in)	110 × 67 × 39 mm (4.3 × 2.6 × 1.5 in)
WEIGHT	198 g (7 oz)	220 g (7 oz)	220 g (7.7 oz)

PART NO.	MODEL
IAIR000LP000001	Drakos - IR Laser Pointer*
IAIR001LP000001	Drakos-I - Dual Channel: IR Laser Pointer & IR850 Illuminator*
IAIR002LP000001	Drakos-II - Dual Channel: IR Laser Pointer & Visible Red Laser Pointer*

*These items are export-controlled, please see page 2



ARMASIGHT by FLIR **T-MAIM**

Tactical Multi-spectral Aiming/Illumination Module

The T-MAIM Tactical Multispectral Aiming and Illumination Module is a CLASS IIIb laser that consists of a visible aiming laser, a near-infrared (near-IR) aiming laser, and a focusable near-IR Illuminator. The function of the T-MAIM is to provide an operator with highly collimated aiming lasers for precision aiming and targeting both with the naked eye in low light conditions and with image intensified Night Vision devices in nighttime applications. The focusable near-IR Illuminator provides the user with the ability to flood the area of interest with invisible near infrared light.

The T-MAIM can be operated in a variety of modes with single lasers or multiple lasers concurrently. The visible and near-IR aiming lasers can be boresighted to the weapon using unique ballistic differential adjustment ports using the onboard tool. The output power of the T-MAIM can be adjusted from approximately 100 µW to 25 mW electronically across 256 discrete intervals. Additionally, the aiming lasers can be operated via a user-chosen switch, in either a constant wave or 4 Hz pulsed mode. Depending on the laser mode selected, the T-MAIM can be used either with the naked eye in low light conditions, or with image intensified Night Vision devices in dark environments. The T-MAIM can be used in either a handheld mode with the operator activating the "FIRE" button, or in a weapon-mounted configuration using the integrated MIL-STD-1913 rail grabber assembly on the unit.

The T-MAIM is also equipped with a MIL-STD-1913 rail set at the 10 o'clock position, which allows the operator to attach a tactical flashlight or navigation light to provide illumination in low light conditions.

- Rapid active target acquisition
- True night vision compatible mode
- Adjustable output power
- User selectable constant wave or pulsed modes of aiming lasers
- Two tactical remote switches (including SAFETY remote switch)
- Aiming lasers are co-boresighted
- Unique ballistic differential adjustment ports
- Limited two-year warranty

SPECS	IR LASER	VISIBLE LASER	IR ILLUMINATOR
CLASS	IIIa (Low), IIIb (High)	IIIa	IIIb
OUTPUT POWER	100µW (Low), 25mW (High)	4.0 mW	500µW (Low), 25mW (High)
DIVERGENCE	0.5 mRad	0.8 mRad	1-108 mRad
WAVELENGTH	820 nm – 850 nm	620 nm – 650 nm	820 nm – 850 nm
OPERATING DISTANCE	>200 Meters (Low), 2,000 Meters (High)	>25 Meters in Direct Sunlight	>100 Meters (Low), 2,000 Meters (High)
POWER	One CR123A 3.0V DC Lithium Battery		
BATTERY LIFE	>6 hours in near-IR Aim Mode		
DIMENSIONS	106 × 81 × 48 mm (4.2 × 3.2 × 1.9 in)		
WEIGHT (W/O BATTERY)	200 g (7 oz)		
WATERPROOF	20 m for 1 hr		

PART NO.	MODEL	
IAIRORRLPTMAIMB	T-MAIM Black - Tactical Multi-spectral Aiming and Illumination Module (color Black)*	⚠ ITAR
IAIRORRLPTMAIMT	T-MAIM Tan - Tactical Multi-spectral Aiming and Illumination Module (color Tan)*	⚠ ITAR
IAIROHPLPTMAIMB	T-MAIM HP Black - Tactical High Power Multi-spectral Aiming and Illumination Module (color Black)*	⚠ ITAR
IAIROHPLPTMAIMT	T-MAIM HP Tan - Tactical High Power Multi-spectral Aiming and Illumination Module (color TAN)*	⚠ ITAR

*These items are export-controlled, please see page 2



ARMASIGHT by FLIR **8X36***

Daytime Binoculars

ARMASIGHT by FLIR **8X30C***

Daytime Binoculars

ARMASIGHT by FLIR **7X50***

Daytime Binoculars

Daytime binoculars offer plenty of magnification, solid waterproof construction, and a built-in range finder reticle designed for Military, Law Enforcement, and the outdoor adventurer's needs.

The binoculars provide a powerful magnification and crystal clear optics, which deliver a full range of color and clarity. The multicoated optics of binoculars is designed to enhance the resolution and contrast of your image in extremely bright conditions.

Built-in universal range finder allows for accurate target measurements and range estimates.

These binoculars are waterproof, shockproof, and can reach the standard of GJB/240 and GJB150.

8x36 is the compact binocular with a rangefinding reticle.

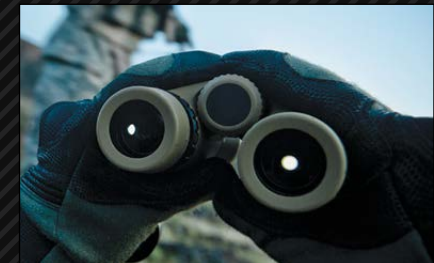
8x30C is the binocular with inter-build compass and a rangefinding reticle.

7x50 is the binocular with a rangefinding reticle.

- Designed for professional use
- Built-in universal rangefinder
- Multicoated optics
- Full rubber body armoring
- Individual eye focus
- Limited two-year warranty

SPECS	8X36	8×30C	7×50
MAGNIFICATION	8x	8x	7x
OBJECTIVE LENS DIAMETER	36 mm	30 mm	50 mm
FIELD OF VIEW	7.0°	8.0°	7.5°
EXIT PUPIL	4.4 mm	3.7 mm	7.1 mm
EYE RELIEF	16 mm	18 mm	23 mm
RESOLUTION	≤6.2"	≤4.5"	≤4.5"
RELATIVE BRIGHTNESS	20.3	14.0	50.4
DIMENSIONS	165 × 127 × 65 mm (6.5 × 5 × 2.6 in)	120 × 167 × 77 mm (4.7 × 6.6 × 3 in)	200 × 150 × 85 mm (7.9 × 5.9 × 3.3 in)
WEIGHT	0.6 kg (1.3 lb)	0.6 kg (1.3 lb)	1.36 kg (3.0 lb)
PART NO.	MODEL		
DAB08X36RF0ARM1	8x36 Binoculars with Rangefinder*		
DAB08X30RFCARM1	8x30C Binoculars with Compass & Rangefinder*		
DAB07X50RF0ARM1	7x50 Binoculars with Rangefinder*		

*These items are export-controlled, please see page 2



CORPORATE HQ

FLIR Systems, Inc.
27700 SW Parkway Avenue
Wilsonville, OR 97070
USA
PH: +1.866.477.3687

SAN FRANCISCO

Outdoor & Tactical Systems
815 Dubuque Avenue
South San Francisco, CA 94080
PH: +1.888.959.2259;
650.492.7755
F: +1.888.959.2260
International Phone/Fax:
650.492.7755

NETHERLANDS

FLIR Systems CVS BV
Charles Petitweg 21
4847 NW Teteringen - Breda
The Netherlands
PH: +31.076.579.4194

GERMANY

FLIR Systems GmbH
Berner Strasse 81
D-60437 Frankfurt am Main
Germany
PH: +49.069.95.00.900
F: +49.069.95.00.9040

BELGIUM

FLIR Systems Trading Belgium
BVBA
Luxemburgstraat 2
2321 Meer
Belgium
PH: +32.0366.55100
F: +32.0330.35624

U.K.

FLIR Systems Ltd.
2 Kings Hill Avenue
West Malling, Kent, ME19 4AQ
United Kingdom
PH: +44.1732.220011

SWEDEN

FLIR Systems AB
Antennvägen 6,
PO Box 7376
SE-187 66 Täby
Sweden
PH: +46.0875.32500
F: +46.0875.32364

MIDDLE EAST

FLIR Systems Saudi Arabia
Unit 127, First Floor
Plaza Building
Olaya Street
Riyadh 11481
Saudi Arabia
PH: +966.11.464.5323
F: +966.11.464.0438

US Commercial Sales
OTS-Sales@flir.com

Government Sales
OTS-Gov@flir.com

International Sales and
Export
OTS-Export@flir.com

Technical Support, Repairs,
Returns, Refunds & Warranty
OTS-Support@flir.com

Equipment described herein may require US Government authorization for export purposes. Diversion contrary to US law is prohibited.
©2017 FLIR Systems, Inc. Specifications are subject to change without notice, check our website: www.flir.com.

www.flir.com/OTS
www.umasight.com



The World's **Sixth Sense**®

