

◆产品特点/Characteristics
 聚丙烯薄膜金属化膜干式结构，金属铝外壳，阻燃（94V-0级）环氧树脂封装，镀锡铜螺母或螺杆引出，高稳定性，低ESR、ESL，具有自愈性。
 Polypropylene film metallized film dry structure, metal aluminum shell, flame retardant (94V-0) epoxy resin package, tin plated copper nut or screw thread lead, high stability, low ESR, ESL, with self-healing.

◆主要应用/Main application:

广泛应用于UPS、变频器、逆变电源、焊机电源等设备中，起储能、直流支撑和滤波作用。

Widely used in UPS, inverter, inverter power supply, welding power supply and other equipment, energy storage, DC support and filtering role.

◆引出及安装方式/Output and installation method:

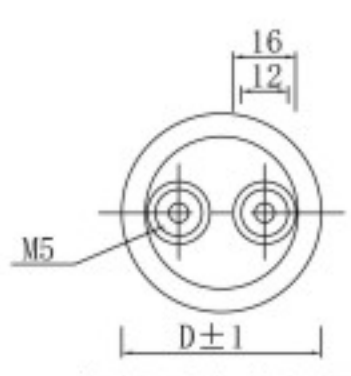
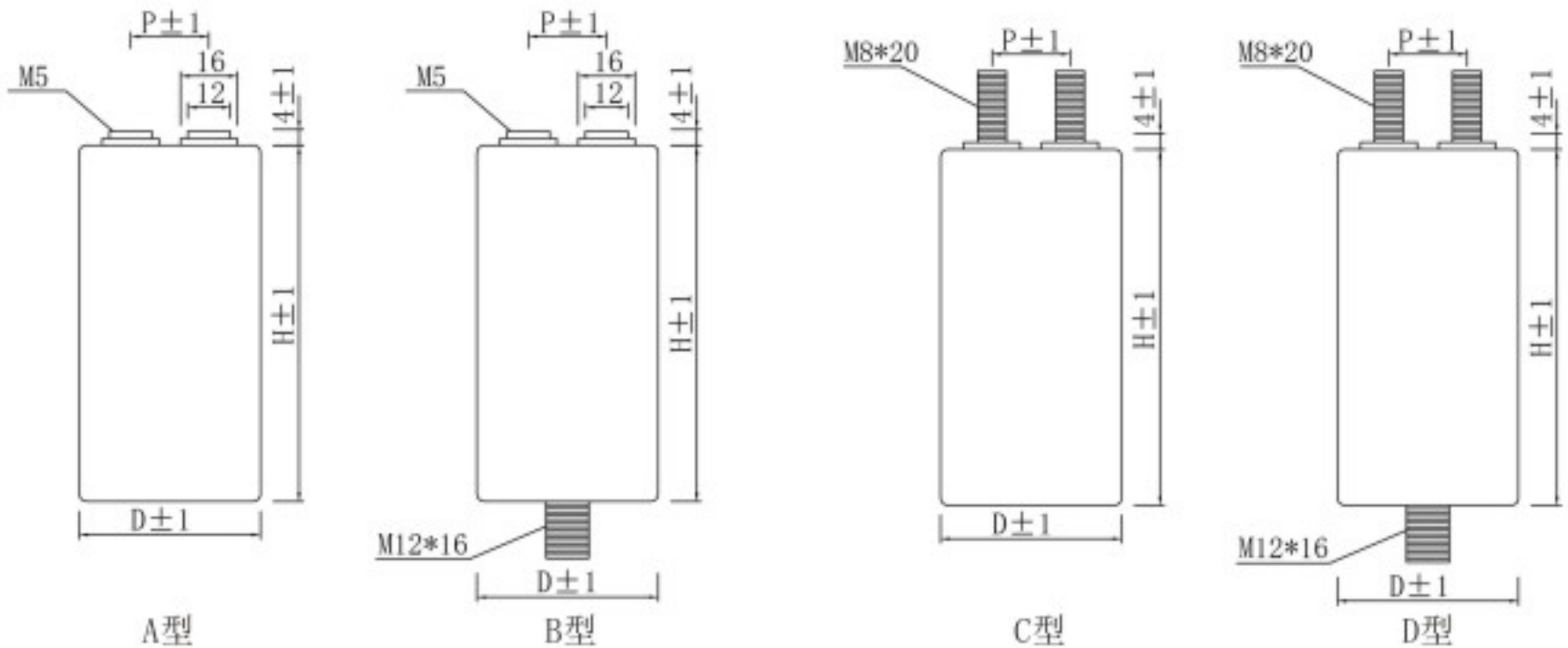
A: 平底上螺母; B: 底部螺杆上螺母; C: 平底上螺杆; D: 底部螺杆上螺母
 A: flat bottom nut; B: bottom screw upper nut; C: flat bottom screw; D: bottom screw upper screw

◆技术性能/Technical performance:

引用标准/Reference standards	IEC 61071-60068
工作温度范围/Working temperature range	-40°C to +85°C
容量范围/Capacity range	50 μF to 1000 μF
额定电压/Rated voltage	475Vdc to 3200Vdc
容量偏差/Capacity deviation	±5%(J) ±10%(K)
极间耐电压/Test voltage between terminals	1.5Un(10s at 20±5°C)
极壳耐电压/Test voltage terminal and case	3000Vac(60s 50Hz 20±5°C)
损耗角正切/Dissipation factor	≤2×10 ⁻³ Measured at 100Hz 25°C
绝缘电阻/Insulation resistance	≥10000s after 1 minute of electrification at 100Vdc(25±5°C)
预期寿命/Life expectancy	≥100,000 hours at Un and 70°C



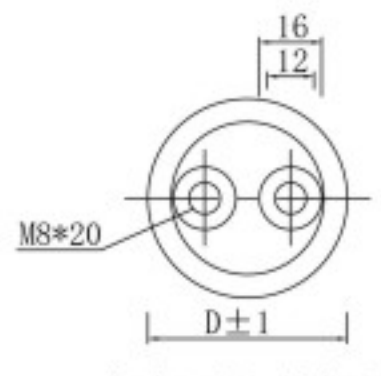
◆外形图/Outline drawing:



螺母引出俯视图



安装卡环图



螺杆引出俯视图

Case						Stud mounting	
	M	Torque	F	Torque	P	S	Torque
D=50			M5×8	2.5N. M Max	22	M10×12	6.0N. M Max
D=60, 65			M5×8	2.5N. M Max	28.5	M12×16	8.0N. M Max
D=76, 86	M8×20	8.5N. M Max	M6×8	4.5N. M Max	32		

◆ 代码说明/Code description:

SCE-800-450



SCE08000450-A



产品编码	型号	额定电压 (V. DC)	容量 (μF)	尺寸 (D*H mm)	P (mm)	Irms max (25°C)	ESR (mΩ)
SCE04750225-A\B\C\D	SCE-475-225	475	225	50*100	28	25	2.0
SCE04751000-A\B\C\D	SCE-475-1000	475	1000	76*145	32	60	3.2
SCE08000200-A\B\C\D	SCE-800-200	800	200	86*80	32	35	5.5
SCE08000450-A\B\C\D	SCE-800-450	800	450	76*145	32	42	4.3
SCE08000550-A\B\C\D	SCE-800-550	800	550	86*145	32	48	3.7
SCE08000800-A\B\C\D	SCE-800-800	800	800	76*225	32	70	3.0
SCE08001000-A\B\C\D	SCE-800-1000	800	1000	86*225	32	80	2.5
SCE10000275-A\B\C\D	SCE-1000-275	1000	275	76*120	32	40	5.0
SCE10000350-A\B\C\D	SCE-1000-350	1000	350	86*120	32	45	4.3
SCE10000500-A\B\C\D	SCE-1000-500	1000	500	76*225	32	65	3.3
SCE10000680-A\B\C\D	SCE-1000-680	1000	680	86*225	32	75	3.0
SCE12000200-A\B\C\D	SCE-1200-200	1200	200	76*120	32	35	5.5
SCE12000250-A\B\C\D	SCE-1200-250	1200	250	86*120	32	40	4.8
SCE12000370-A\B\C\D	SCE-1200-370	1200	370	76*225	32	60	3.5
SCE12000470-A\B\C\D	SCE-1200-470	1200	470	86*225	32	70	3.1
SCE14000140-A\B\C\D	SCE-1400-140	1400	140	76*120	32	35	6.5
SCE14000180-A\B\C\D	SCE-1400-180	1400	180	86*120	32	40	5.5
SCE14000270-A\B\C\D	SCE-1400-270	1400	270	76*225	32	60	4.0
SCE14000350-A\B\C\D	SCE-1400-350	1400	350	86*225	32	65	3.5
SCE16000100-A\B\C\D	SCE-1600-100	1600	100	76*120	32	30	7.5
SCE16000140-A\B\C\D	SCE-1600-140	1600	140	86*120	32	35	5.9
SCE16000200-A\B\C\D	SCE-1600-200	1600	200	76*225	32	55	4.5
SCE16000270-A\B\C\D	SCE-1600-270	1600	270	86*225	32	65	3.7
SCE18000080-A\B\C\D	SCE-1800-80	1800	80	76*120	32	29	8.5
SCE18000110-A\B\C\D	SCE-1800-110	1800	110	86*120	32	35	6.5
SCE18000160-A\B\C\D	SCE-1800-160	1800	160	76*225	32	52	4.8
SCE18000200-A\B\C\D	SCE-1800-200	1800	200	86*225	32	60	4.1
SCE20000130-A\B\C\D	SCE-2000-130	2000	130	76*225	32	36	10.3
SCE20000170-A\B\C\D	SCE-2000-170	2000	170	86*225	32	42	8.5
SCE24000090-A\B\C\D	SCE-2400-90	2400	90	76*225	32	32	12.0
SCE24000120-A\B\C\D	SCE-2400-120	2400	120	86*225	32	40	9.6
SCE32000050-A\B\C\D	SCE-3200-50	3200	50	76*225	32	30	15.2
SCE32000065-A\B\C\D	SCE-3200-65	3200	65	86*225	32	35	12.5