

## Easy-Mark Plus™ Labeling Software

### Print it Your Way

Quickly generate labels with new and improved Easy-Mark Plus™ Labeling Software, that is now even more powerful. Advanced features such as 'drag and drop' functionality and wizard tools help you create customized labels to suit your specific needs. Current Easy-Mark™ Software users can still rely on the features you already like such as WYSIWYG (What You See Is What You Get) user interface, data import, symbol import, and pre-loaded label formats.

Available in multiple media options such as CD, USB flash drive, web download, or networkable versions. Now you have the flexibility to install the software version that best suits your needs. Easy-Mark Plus™ Software is designed for users who have advanced labeling needs for regulatory compliance, safety awareness, and improved production processes. PRINT IT YOUR WAY!

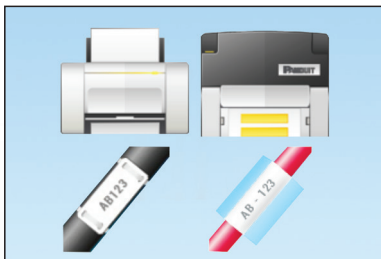


### NEW! Key Features

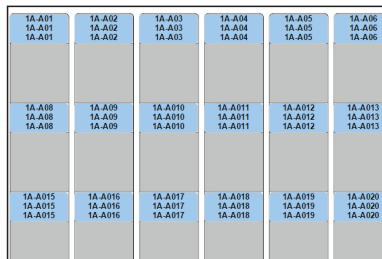
### Benefits

<b>NEW! More powerful label design tools</b>	Add text boxes, lines, frames, tables, date and time stamps, or 'prompt at print' tool allowing you to create more customized and informative labels
<b>NEW! Drag and drop functionality</b>	Quickly create complex labels or design detailed labels with multiple zones and objects for applications such as rating plates, arc flash labels, and fiber enclosures
<b>NEW! Auto font sizing</b>	Insert, move, and resize objects anywhere on a label to maximize label design area
<b>NEW! Auto length for continuous tapes</b>	Choose between fixed size text or text that automatically adjusts to fit label area while typing
<b>NEW! QR Code functionality</b>	Tape length adjusts as you type, providing quicker and more flexible design capability, while minimizing label waste
<b>NEW! Improved WYSIWYG User Interface (What You See Is What You Get)</b>	Create and print labels using QR Codes, or any of the other 21 included barcode symbologies
<b>NEW! Media options</b>	Labels appear on-screen as they will when printed, eliminating guesswork; label formats are displayed with enhanced graphical details, such as pre-printed headers, actual label colors; display allows view rotation and zoom function
	Multiple versions available for greater flexibility; choose from different options, including CD, portable flash drive, online download or networkable versions

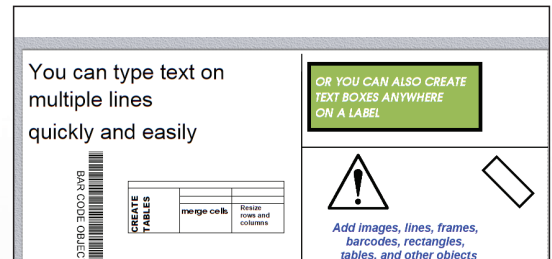
### Unique • Innovative • Powerful



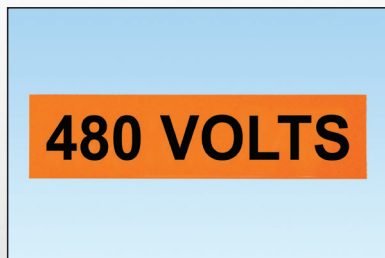
Simple Label Format Selection



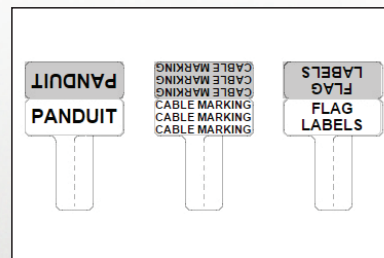
Easy Text Entry



Drag, Drop, and Resize Objects



Auto Adjustment for Tape Length



Improved WYSIWYG Interface

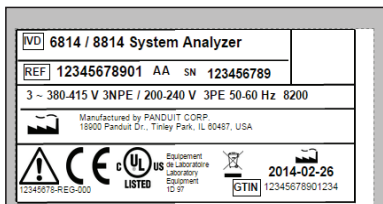
# Easy-Mark Plus™ Labeling Software

## Key Features

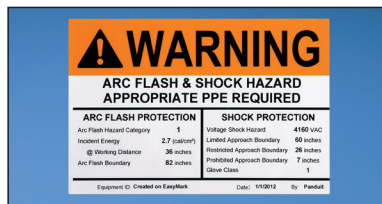
<b>Market specific labeling application wizards</b>	Patented application wizards for control panels, construction and maintenance, safety signs, pipemarkers, datacenters, and enterprise networks assist with the automatic design and formatting of labels for compliance to industry standards (ANSI, OSHA, TIA-606-B, etc.)
<b>Multiple language options</b>	Instructions and user interface are available for multiple languages in one version: English, Chinese, French, German, Italian, Korean, Portuguese, Spanish, and Japanese
<b>Pre-loaded Panduit label formats</b>	Thousands of label formats for thermal transfer, laser jet, ink jet, dot matrix, and hand-held printers are included, and can be selected or changed quickly and easily
<b>File compatibility</b>	Use with all existing Panduit® Easy-Mark™ and Pan-Mark™ files designed in the past, or update them with new objects and styling; no need to re-create 'old' label files
<b>Upgradeable</b>	Future revisions, enhancements, and new label formats are available at no additional charge on the Panduit website; Easy-Mark™ Plus can be configured to automatically check for updates

## Benefits (continued)

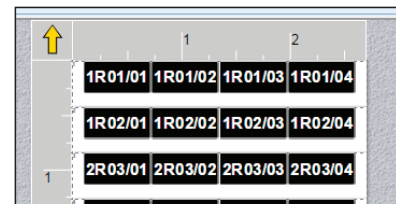
## Easy and Powerful Label Design Options



Rating Plate Labels



Safety and Facility Labels



Network Labeling

## Improved Functionality

Adjustable Character Spacing*	<b>Drag and Drop*</b>	<b>Rotate View*</b>
Adjustable Line Spacing*	<b>Frames*</b>	Serialization
<b>Auto Font Size*</b>	<b>Lines*</b>	Symbols Library
<b>Auto Length*</b>	Market Wizards	Tables*
Barcodes	Password Protect Function	<b>Text Boxes*</b>
Circles*	Prompt at Print*	Two-Sided Printing Mode
Data Import	<b>QR Codes*</b>	Wiremarker Mode
<b>Date and Time Stamp*</b>	Rectangles*	<b>Zoom In and Out*</b>

\* New Easy-Mark Plus™ Labeling Software function.

### System Requirements

- WINDOWS ^ XP, Vista, 7, 8, 8.1, or 10
- 32 or 64 bit operating systems
- 300 MB hard drive space and 2 GB Memory
- Microsoft.NET Framework 4.0 or higher
- Mouse or compatible pointing device
- Keyboard
- Optical Disc Drive or USB Port

**Note:** Additional requirements for Server version only: Windows Server 2008 SP2, 2008 R2, 2012, or 2012 R2, 1 GB hard drive space, and 3 GB memory.

^Windows is a registered trademark of Microsoft Corp. in the United States and/or other countries.

## Ordering Information

Part Number	Description	Std. Pkg. Qty.	Std. Ctn. Qty.
EMPLUS-CD	Easy-Mark Plus™ Labeling Software, CD-ROM.	1	10
EMPLUS-DL	Easy-Mark Plus™ Labeling Software, online download.	1	10
EMPLUS-2GO	Easy-Mark Plus™ Portable Application, USB Flash Drive.	1	10
EMPLUS-SERVER	Easy-Mark Plus™ Labeling Software, networkable server based version.	1	10

### WORLDWIDE SUBSIDIARIES AND SALES OFFICES

PANDUIT CANADA  
Markham, Ontario  
cs-cdn@panduit.com  
Phone: 800.777.3300

PANDUIT EUROPE LTD.  
London, UK  
cs-emea@panduit.com  
Phone: 44.20.8601.7200

PANDUIT SINGAPORE PTE. LTD.  
Republic of Singapore  
cs-ap@panduit.com  
Phone: 65.6305.7575

PANDUIT JAPAN  
Tokyo, Japan  
cs-japan@panduit.com  
Phone: 81.3.6863.6000

PANDUIT LATIN AMERICA  
Guadalajara, Mexico  
cs-la@panduit.com  
Phone: 52.33.3777.6000

PANDUIT AUSTRALIA PTY. LTD.  
Victoria, Australia  
cs-aus@panduit.com  
Phone: 61.3.9794.9020

For a copy of Panduit product warranties, log on to [www.panduit.com/EasyMarkPlus](http://www.panduit.com/EasyMarkPlus)

For more information

Visit us at [www.panduit.com](http://www.panduit.com)

Contact Customer Service by email: [cs@panduit.com](mailto:cs@panduit.com)  
or by phone: 800.777.3300



©2016 Panduit Corp.  
ALL RIGHTS RESERVED.  
IDCB84--SA-ENG  
4/2016

# Mouser Electronics

Authorized Distributor

Click to View Pricing, Inventory, Delivery & Lifecycle Information:

[Panduit:](#)

[EMPLUS-SERVER](#) [EMPLUS-2GO](#) [EMPLUS-DL](#) [EMPLUS-CD](#)