

MD6Z3V9~MD6Z47

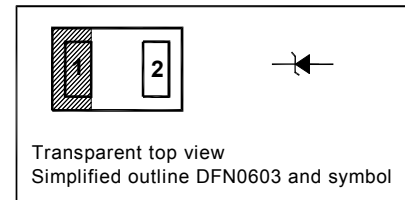
Silicon Planar Zener Diodes

Features

- Low leakage voltage
- Small plastic package suitable for surface mounted design
- High reliability

PINNING

PIN	DESCRIPTION
1	Cathode
2	Anode



Absolute Maximum Ratings ($T_a = 25^\circ\text{C}$)

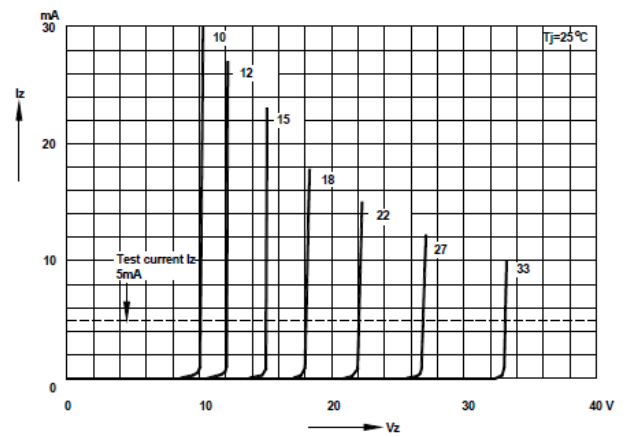
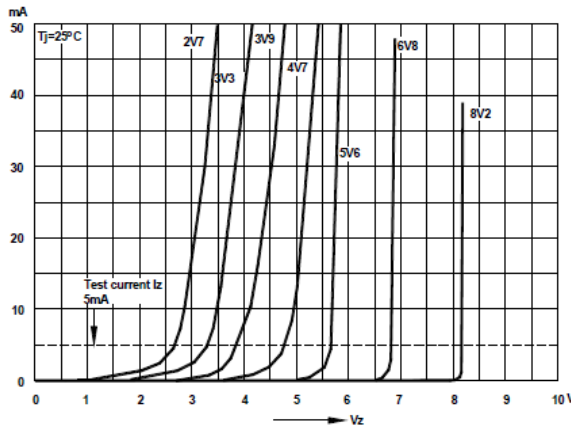
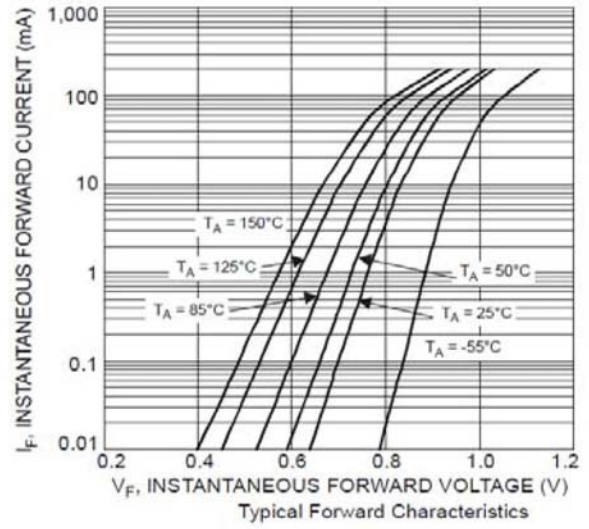
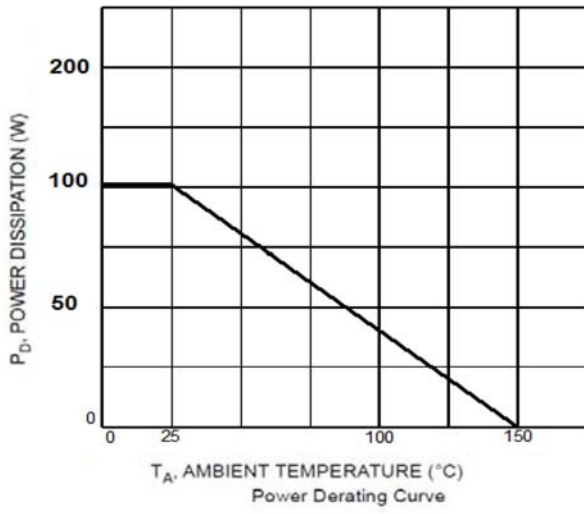
Parameter	Symbol	Value	Unit
Power Dissipation	P_{tot}	100	mW
Thermal Resistance, Junction to Ambient	$R_{\theta\text{JA}}$	1250	$^\circ\text{C}/\text{W}$
Operating and Storage Temperature Range	T_j, T_{stg}	- 55 to + 150	$^\circ\text{C}$

MD6Z3V9~MD6Z47

Characteristics at $T_a = 25^\circ\text{C}$

Type	Marking Code	Zener Voltage			Maximum Reverse Current	
		V_{ZT}		at I_{ZT}	I_R	at V_R
		Min. (V)	Max. (V)	(mA)	Max. (μA)	(V)
MD6Z3V9	KJ	3.74	4.16	5	5	1
MD6Z4V7	KL	4.42	4.9	5	2	1
MD6Z5V1	KM	4.84	5.37	5	0.2	2
MD6Z5V6	KN	5.31	5.92	5	1	2.5
MD6Z6V0	KP	5.676	6.324	5	1	2.8
MD6Z6V2	KQ	5.86	6.53	5	1	3
MD6Z6V8	KR	6.47	7.14	5	0.5	3.5
MD6Z7V5	KS	7.06	7.84	5	0.5	4
MD6Z8V2	KT	7.76	8.64	5	0.5	5
MD6Z9V1	KU	8.65	9.55	5	0.5	6
MD6Z10	KV	9.5	10.5	5	0.1	7
MD6Z11	KW	10.45	11.55	5	0.1	8
MD6Z12	KX	11.4	12.6	5	0.1	9
MD6Z13	KY	12.35	13.65	5	0.1	10
MD6Z15	KZ	14.25	15.75	5	0.1	11
MD6Z16	LA	15.2	16.8	5	0.1	12
MD6Z18	LB	17.1	18.9	5	0.1	13
MD6Z20	LC	19	21	5	0.1	15
MD6Z22	LD	20.9	23.1	5	0.1	17
MD6Z24	LE	22.8	25.2	5	0.1	19
MD6Z27	LF	25.65	28.35	2	0.1	21
MD6Z30	LG	28.5	31.5	2	0.1	23
MD6Z33	LH	31.35	34.65	2	0.1	25
MD6Z36	LJ	34.2	37.8	2	0.1	27
MD6Z39	LK	37.05	40.95	2	0.1	30
MD6Z43	LL	40.85	45.15	2	0.1	33
MD6Z47	LM	44.65	49.35	2	0.1	36

MD6Z3V9~MD6Z47



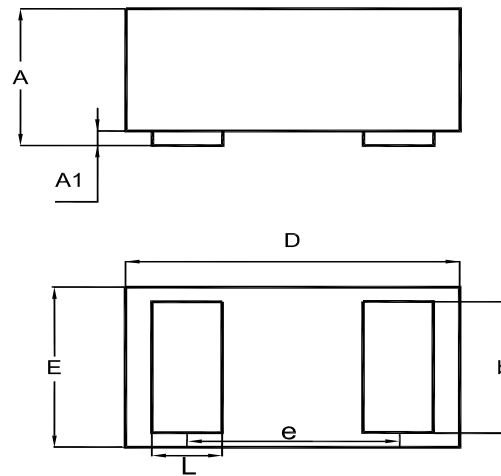
TOP DYNAMIC

MD6Z3V9~MD6Z47

PACKAGE OUTLINE

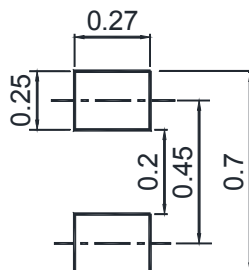
Plastic surface mounted package; 2 leads

DFN060



UNIT	A	A1	b	D	E	e	L	M
mm	0.21 0.255	0 0.025	0.21	0.57 0.65	0.28 0.35	0.2	0.18	0.13

Recommended Soldering Footprint



Packing information

Package	Tape Width (mm)	Pitch		Reel Size		Per Reel Packing Quantity
		mm	inch	mm	inch	
DFN0603	8	4 ± 0.1	0.157 ± 0.004	178	7	10,000

TOP DYNAMIC

Dated: 31/07/2017 Rev: 01