

Helping Customers Innovate, Improve & Grow



Features

- Frequency: 10 KHz to 125 MHz
- 4 Pin 1/2 DIP Package with Through Hole and SMD lead options
- Fully RoHS Compliant *
- No pure tin is used in this product
- Previous Model: CO-449, MC720, MC721, 7140, 4140, ACA1
- Made in USA

Applications

- Low voltage clock applications
- Military Portable Radios
- Avionics and Instrumentation
- Test and Measurement Equipment
- Medical Equipment
- Navigation

* (Except parts with Sn/Pb Solder Coated Option)



Performance Specifications

Parameter	Frequency Stabilities				Condition	
	Min	Typ	Max	Units		
vs. operating temperature range (referenced to +25°C)	-15		+15	ppm	0... +70°C	
	-25		+25	ppm		
	-50		+50	ppm		
	-100		+100	ppm		
	-25		+25	ppm	-40... +85°C	
	-50		+50	ppm		
	-100		+100	ppm		
	-50		+50	ppm	-55... +85°C	
	-100		+100	ppm		
Initial tolerance	-50		+50	ppm	-55... +105°C	
	-100		+100	ppm		
	-50		+50	ppm	-55... +125°C	
	-100		+100	ppm		
	-15		+15	ppm	@+25°C	
	-25		+25	ppm		
	-50		+50	ppm		
	-100		+100	ppm		
						@+25°C

Parameter	Frequency Stabilities				Condition
	Min	Typ	Max	Units	
Overall tolerance (Referenced to +25°C) (includes operating temperature and initial accuracy)	-20		+20	ppm	0... +70°C
	-25		+25	ppm	
	-50		+50	ppm	
	-100		+100	ppm	
	-25		+25	ppm	-40... +85°C
-50		+50	ppm		
-100		+100	ppm		
	-50		+50	ppm	-55... +85°C
	-65		+65	ppm	
	-100		+100	ppm	-55... +105°C
	-50		+50	ppm	
	-50		+50	ppm	-55... +125°C
	-65		+65	ppm	
	-80		+80	ppm	
	-100		+100	ppm	
vs. supply voltage change	-2		+2	ppm	VS ± 5% Load ± 5% after 30 days of operation
vs. load change	-1		+1	ppm	
vs. aging / 1st year	-3		+3	ppm	
vs. aging / year (following years)	-1		+1	ppm	
Supply Voltage (Vs)					
Supply voltage	4.75	5.0	5.25	VDC	
Supply voltage	3.135	3.3	3.465	VDC	
Supply voltage	2.375	2.5	2.625	VDC	
Supply voltage	1.71	1.8	1.89	VDC	
Current consumption (+5 VDC)			15 20 40	mA mA mA	ACMOS or TTL 1.0 to 23.9 MHz ACMOS or TTL 24 to 49.9 MHz ACMOS or TTL 50 to 125.00 MHz
Current consumption (+3.3 VDC or +2.5 VDC)			1.5 4 8 12 20 30	mA mA mA mA mA mA	ACMOS 1.0 to 14.9 MHz ACMOS 15.0 to 39.9 MHz ACMOS 40.0 to 59.9 MHz ACMOS 60.0 to 84.9 MHz ACMOS 85.0 to 124.9 MHz ACMOS 125.0 to 170.0 MHz
Current consumption (+1.8 VDC)			1.0 2 3 4 10 15	mA mA mA mA mA mA	ACMOS 1.0 to 14.9 MHz ACMOS 15.0 to 39.9 MHz ACMOS 40.0 to 59.9 MHz ACMOS 60.0 to 84.9 MHz ACMOS 85.0 to 124.9 MHz ACMOS 125.0 to 170.0 MHz
RF Output					
Signal	HCMOS / ACMOS				
Load		15	50	pF	
Signal Level (Vol)			0.5 0.3 0.25 0.2	VDC VDC VDC VDC	with Vs=5.0V and 15pF load with Vs=3.3V and 15pF load with Vs= 2.5V and 15pF load with Vs= 1.8V and 15pF load
Signal Level (Voh)	4.5 3.0 2.25 1.62			VDC VDC VDC VDC	with Vs=5.0V and 15pF load with Vs=3.3V and 15pF load with Vs=2.5V and 15pF load with Vs=1.8V and 15pF load
Rise and fall times for ACMOS (measured 10% to 90%)			10 6 3	ns ns ns	1.0 to 23.9 MHz 24.0 to 79.9 MHz 80.0 to 125.0 MHz
Duty cycle	45 40		55 60	% %	@ 50% < 15 MHz @ 50% => 15 MHz

Performance Specifications

Performance Specifications					
Parameter	Frequency Stabilities				Condition
	Min	Typ	Max	Units	
Signal	TTL				
Load			10	TTL	
Signal Level (Vol)			0.4	VDC	
Signal Level (Voh)	+2.4			VDC	
Rise and fall times for AC MOS (measured 0.8 V to 2.0 V)			5 3	ns ns	1.0 to 23.9 MHz 24.0 to 125 MHz
Duty cycle	45 40		55 60	% %	@ 1.4V < 15 MHz @ 1.4V >= 15 MHz
Absolute Maximum Ratings					
Supply voltage (Vs)			7.0	V	with Vs=5.0VDC and 3.3 VDC
Supply voltage (Vs)			3.6	V	with Vs=2.5VDC and 1.8 VDC
Operable temperature range	-55		+125	°C	
Storage temperature range	-62		+125	°C	

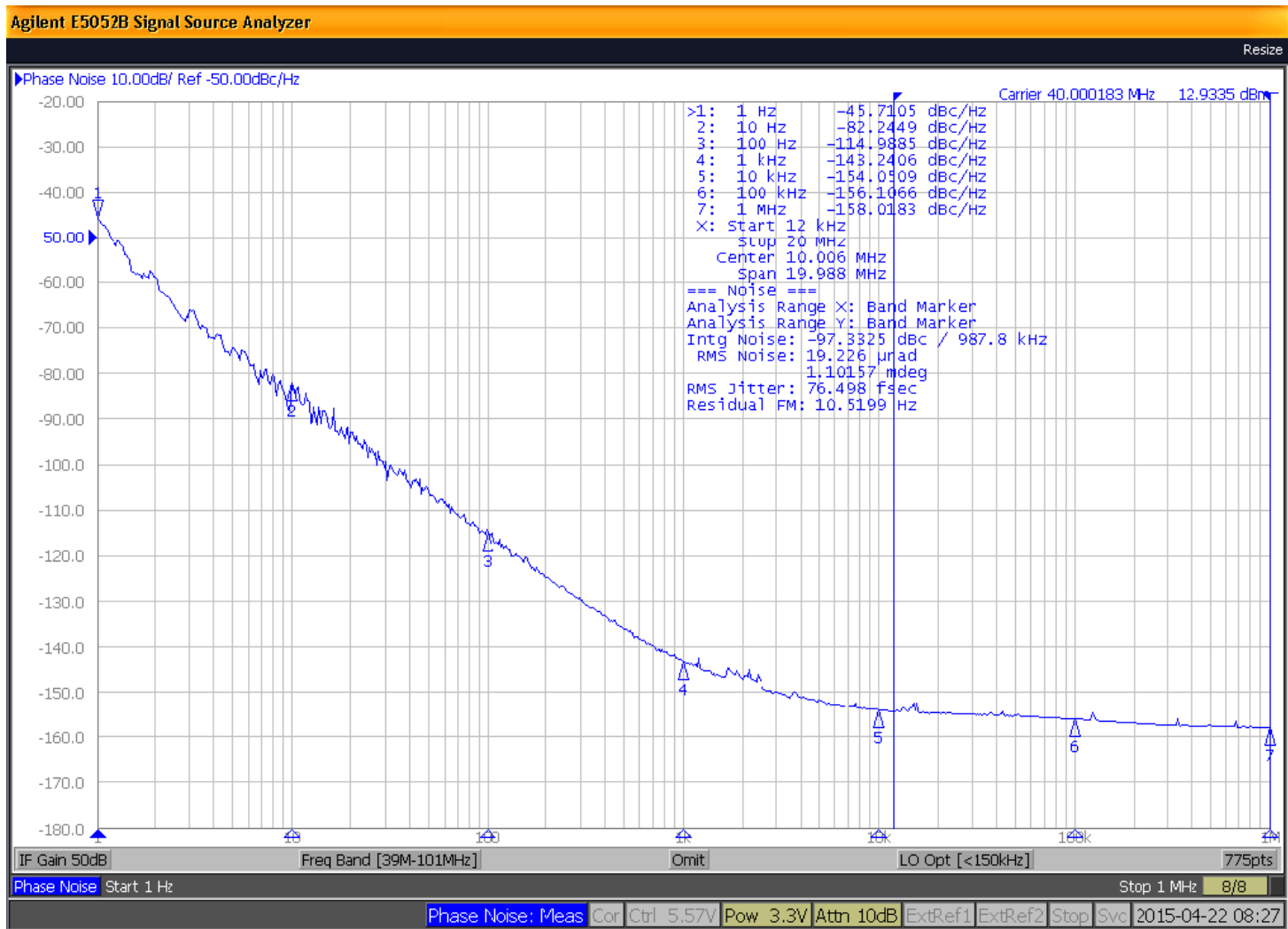
Additional Parameters

Screening	Vectron Verification	
	Class B, MIL-PRF-55310, Rev. E	
Output Enable Hi	Logic "0" input = Outputs disabled (Tri-state) Logic "1" or floating input = Outputs enabled	
Output Enable Lo	Logic "1" input = Outputs disabled (Tri-state) Logic "0" or floating input = Outputs enabled	
Processing & Packing	Handling & processing note	

Standard Environmentals

Vibration	MIL-STD-202, Method 204, Condition G (30 G, 10Hz-2000Hz)
Shock	MIL-STD-202, Method 213, Condition E (1000g, 0.5ms, 1/2 sine)
Acceleration	MIL-STD-883, Method 2001, Condition A (5000 G, Y1 Plane)
Temperature Cycling	MIL-STD-883, Method 1010, Condition B
Thermal Shock	MIL-STD-202, Method 107, Condition B
Solderability	MIL-STD-202, Method 208
Leak Test (Fine and Gross)	MIL-STD-883, Method 1014, Condition A1 and C1

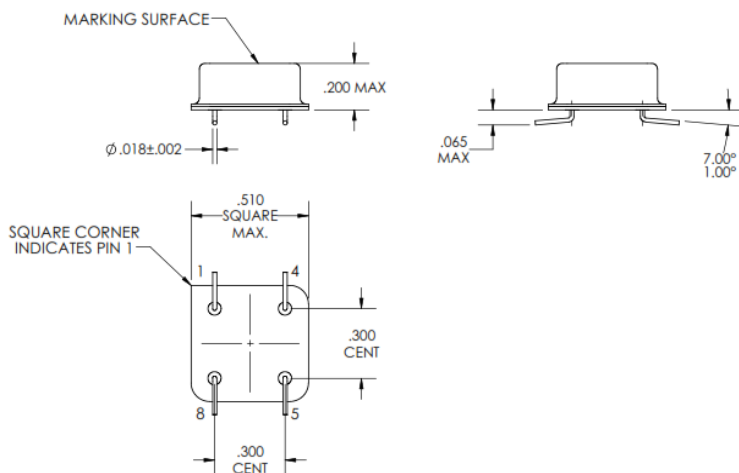
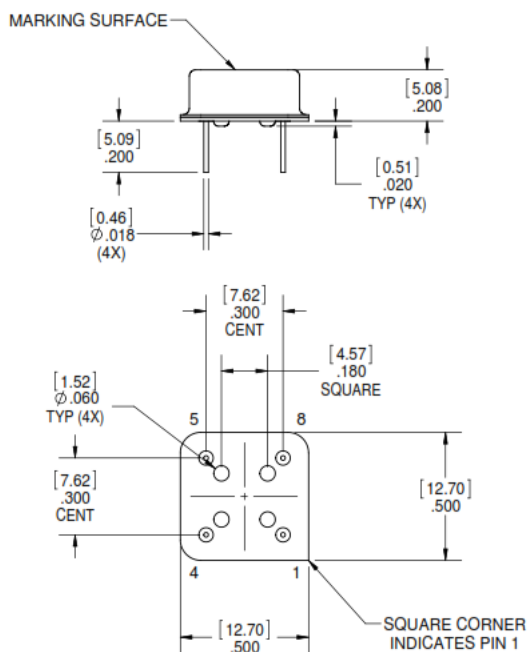
Phase Noise Plot



Outline Drawing / Enclosure

Dimensions in inches (mm)

Pin Connections	
1	Enable, Disable, or No Connection
4	Case Ground
5	Output
8	B+ (+5VDC Supply Voltage)



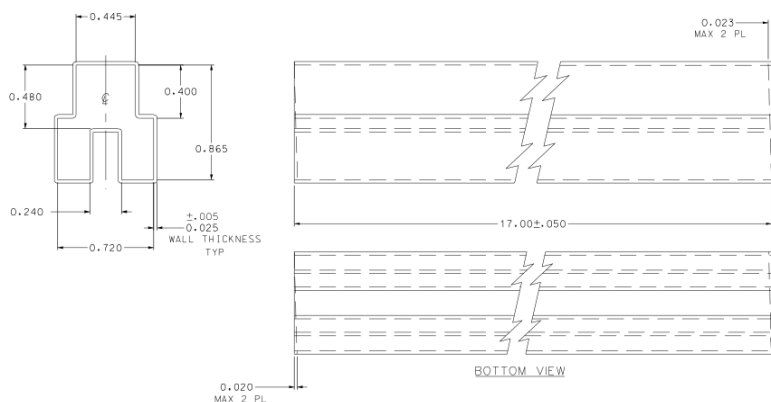
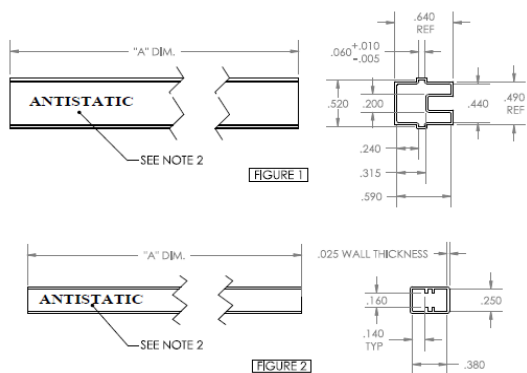
Standard Shipping Method

NOTES:

1. MATERIAL: CLEAR R-PVC
2. ANTISTATIC TREATED/PRINTED (BLUE INK) .125" HIGH LETTERS
3. MANUFACTURER: THIELEX
4. NO HOLES
5. DIMENSIONS ARE SHOWN FOR REFERENCE ONLY.

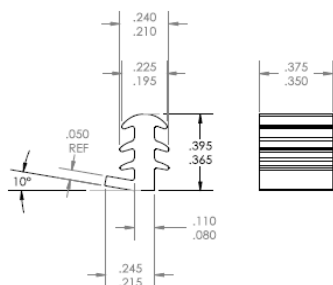
NOTES:

- 1) ANTISTATIC TREATED
- 2) RESISTIVITY: 1×10^5 TO $< 1 \times 10^{12}$ ohms/square
- 3) BOW (MAX. ALLOWABLE PER LENGTH): .051"
- 4) CUT ANGLE (MAX. ALLOWABLE, EACH END, ANY DIRECTION): 1.5°

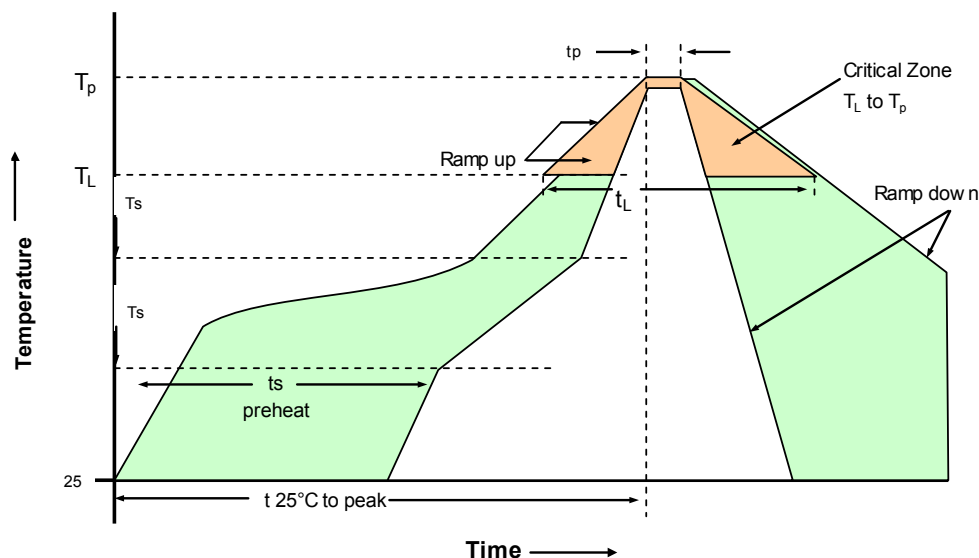


NOTES:

1. MATERIAL: KRATON (BLACK)
2. MANUFACTURER: PEAK INTERNATIONAL



Recommended Reflow Profiles for Pb-Free & Sn-Pb



230°C Reflow Profile

Profile Feature	Sn-Pb Assembly	Profile Feature	Sn-Pb Assembly
Average ramp-up rate (TL to TP)	3°C/secod max.	Time 25°C to Peak Temperature	4 minutes max.
Preheat - Temperature min T _{sm} - Temperature Min T _{smax} - Time (min to max) (ts)	135°C 155°C 60-90 seconds	Time maintained above - Temperature (TL) - Time (tL)	183°C 45-60 seconds
T _{smax} to TL -Ramp-up Rate	3°C/secod max.		
Time maintained above - Temperature (TL) - Time (TL)	183°C 40-60 seconds	Time within 5°C of actual Peak Temperature (tp)	10-20 seonds max.
Peak Temperature (Tp)	max 230°C	Ramp-down Rate	6°C/second max.

Note: All temperatures refer to topside of the package, measured on the package body surface.

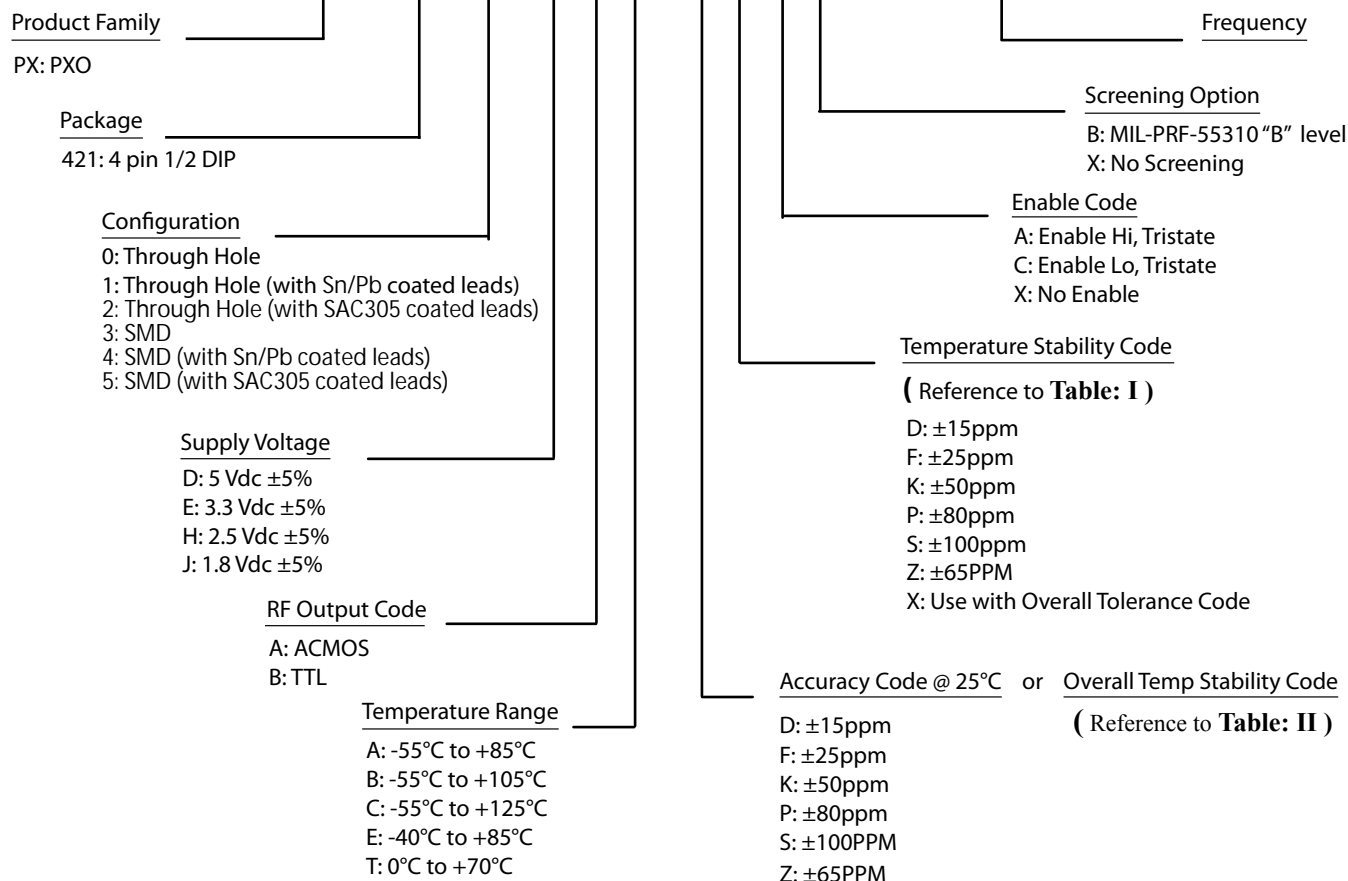
260°C Reflow Profile

Profile Feature	Pb-Free Assembly	Profile Feature	Pb-Free Assembly
Average ramp-up rate (TL to TP)	3°C/secod max.	Time 25°C to Peak Temperature	8 minutes max.
Preheat - Temperature min T _{sm} - Temperature min T _{smax} - Time (min to max) (ts)	150°C 200°C 60-180 seconds	Time maintained above - Temperature (TL) - Time (tL)	217°C 60-150 seconds
T _{smax} to TL -Ramp-up Rate	3°C/secod max.		
Time maintained above - Temperature (TL) - Time (TL)	217°C 60-150 seconds	Time within 5°C of actual Peak Temperature (tp)	20-40 seonds max.
Peak Temperature (Tp)	max 260°C	Ramp-down Rate	6°C/second max.

Note: All temperatures refer to topside of the package, measured on the package body surface.

Ordering Information

PX - 421 0 - D A E - F K A B - 10M000000



Available Temperature Stability Code	
Temp Range	Temp Stability
A: -55°C to +85°C	K: ± 50ppm
	Z ± 65ppm
B: -55°C to +105°C	P ± 80ppm
	S ± 100ppm
E: -40°C to +85°C	F: ± 25ppm
	K: ± 50ppm
	Z ± 65ppm
	P ± 80ppm
T: 0°C to +70°C	S ± 100ppm
	D: ± 15ppm
	F: ± 25ppm
	K: ± 50ppm
	Z ± 65ppm
	P ± 80ppm
	S ± 100ppm

Table: I

Available Overall Tolerance Code		
Temp Range	Overall Tolerance	Temp Stability
A: -55°C to +85°C	Z: ± 65ppm	X
B: -55°C to +105°C	P: ± 80ppm	X
C: -55°C to +125°C	S: ± 100ppm	X
E: -40°C to +85°C	K: ± 50ppm	X
	Z: ± 65ppm	X
	P: ± 80ppm	X
	S: ± 100ppm	X
T: 0°C to +70°C	F: ± 25ppm	X
	K: ± 50ppm	X
	Z: ± 65ppm	X
	P: ± 80ppm	X
	S: ± 100ppm	X

Table: II

This Page Intentionally Left Blank

Notes:

1. Contact factory for improved stabilities or additional product options. Not all options and codes are available at all frequencies.
2. Unless other stated all values are valid after warm-up time and refer to typical conditions for supply voltage, frequency control voltage, load, temperature (25°C).
3. Phase noise degrades with increasing output frequency.
4. Subject to technical modification.
5. Contact factory for availability.

For Additional Information, Please Contact

USA:

Vectron International
267 Lowell Road, Unit 102
Hudson, NH 03051
Tel: 1.888.328.7661
Fax: 1.888.329.8328

Europe:

Vectron International
Landstrasse, D-74924
Neckarbischofsheim, Germany
Tel: +49 (0) 3328.4784.17
Fax: +49 (0) 3328.4784.30

Asia:

Vectron International
68 Yin Cheng Road(C), 22nd Floor
One LuJiaZui
Pudong, Shanghai 200120, China
Tel: 86.21.6194.6886
Fax: 86.21.6194.6699

Disclaimer

Vectron International reserves the right to make changes to the product(s) and or information contained herein without notice. No liability is assumed as a result of their use or application. No rights under any patent accompany the sale of any such product(s) or information.