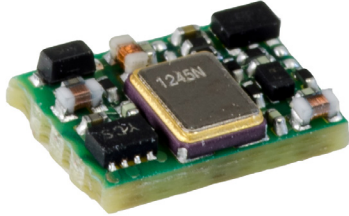


Helping Customers Innovate, Improve & Grow



PX-706

Features

- AT-Cut Crystal
- Surface Mount FR4 based package
- Single layer
- Reflow Process Compatible
- Low Phase Noise & Jitter
- Tight Stabilities
- Frequency Range 40 - 300MHz
- Standard Frequencies 61,44; 100; 122,88; 153,6; 200; 250; 285; 300MHz

Applications

- Industrial
- Synthesizers
- Test & Measurement
- Military

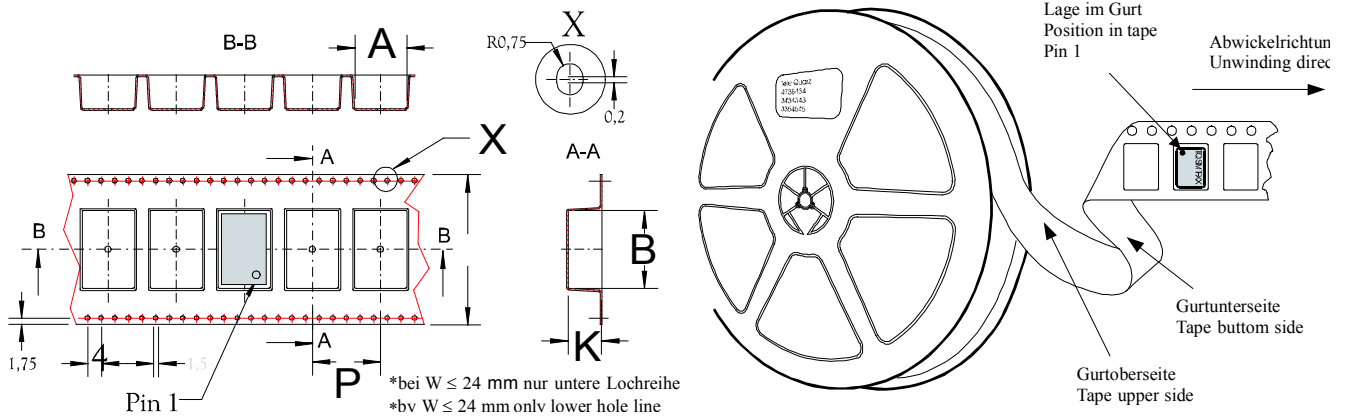
Performance Specifications

Frequency Stabilities ¹					
Parameter	Min	Typical	Max	Units	Condition
vs. operating temperature range (referenced to +25°C)	-25		+25	ppm	-40 to +85°C
Initial tolerance	-15		+15	ppm	@V _c =V _s /2
vs. supply voltage change	-3		+3	ppm	V _s ±5%
vs. load change	-2		+2	ppm	Load ±10%
vs. aging (15 years)	-7		+7	ppm	

Performance Specifications

Supply Voltage (Vs)						
Parameter	Min	Typical	Max	Units	Condition	
Supply voltage (standard)	3.135	3.3	3.465	VDC		Options
Current consumption			20	mA	@ HCMOS	
Current consumption			100	mA	@ PECL	
Supply voltage	4.75	5	5.25	VDC		
Current consumption			15	mA	@ HCMOS	
Current consumption			65	mA	@ PECL	
RF Output						
Signal	HCMOS					Options
Load		15		pF		
Rise and Fall time			5	ns	@ 15 pF 10 to 90%	
Duty cycle	45		55	%	@ Vs / 2	
Signal	PECL					
Load		50		Ω		
Rise and Fall time			1	ns	20 to 80%	
Duty cycle	45		55	%		
Additional Parameters						
Phase Noise		-83		dBc/Hz	10 Hz	@100 MHz LVCMOS 3.3V
		-116		dBc/Hz	100 Hz	
		-142		dBc/Hz	1 kHz	
		-157		dBc/Hz	10 kHz	
		-162		dBc/Hz	100 kHz	
		-164		dBc/Hz	1 MHz	
Jitter		0.047		ps RMS	@ 12kHz .. 20MHz	
Phase Noise		-83		dBc/Hz	10 Hz	@ 100 MHz PECL 3.3V
		-116		dBc/Hz	100 Hz	
		-142		dBc/Hz	1 kHz	
		-156		dBc/Hz	10 kHz	
		-160		dBc/Hz	100 kHz	
		-162		dBc/Hz	1 MHz	
Jitter		0.064		ps RMS	@ 12kHz .. 20MHz	
Weight			1.0 g			
Processing & Packing	Handling & Processing Note					
Absolute Maximum Ratings						
Supply voltage (Vs)			6.0	V		
Operable Temperature Range	-40		+85	°C		
Storage Temperature Range	-40		+95	°C		

Standard Shipping Method

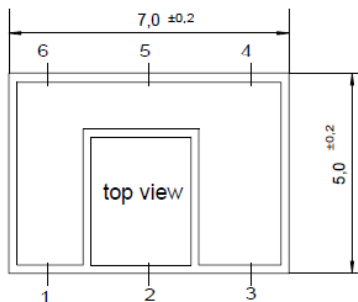


Enclosure Type	Tape Width W (mm)	Quantity per meter	Quantity per reel	Dimension P
G322	12	150	750	8

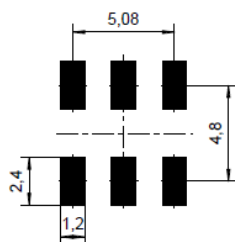
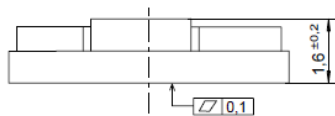
Enclosure

Package Codes

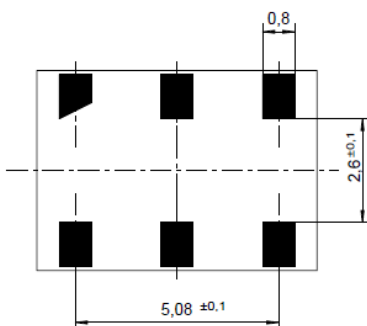
Type	Height "H"	Pin Length "L"
G322	1.6	NA



G 322



Padvorschlag
land pattern
recommendation



Marking

PX-706-xxxx
Frequency
● AYYWW

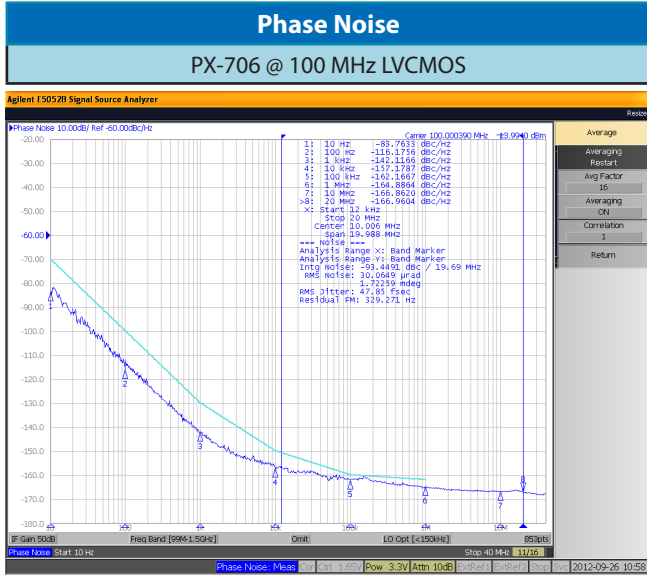
Pin Connections

1	N.C.
2	N.C. / Enable (Option)
3	Ground
4	RF Output
5	RF Output complementary (PECL) N.C. (CMOS)
6	Supply Voltage Input (Vs)

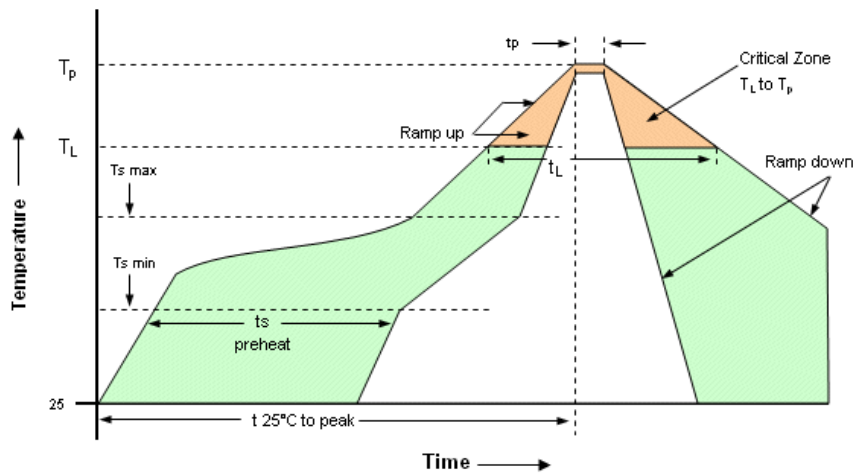
Enable true table (optional)

	HCMOS		LVPECL	
	Pin 4	Pin 5	Pin 4	Pin 5
High	Data	N.C.	No Data	No Data
Open	Data	N.C.	Data	Compl. Data
Low	High Tristate	N.C.	Data	Compl. Data

Typical Performance



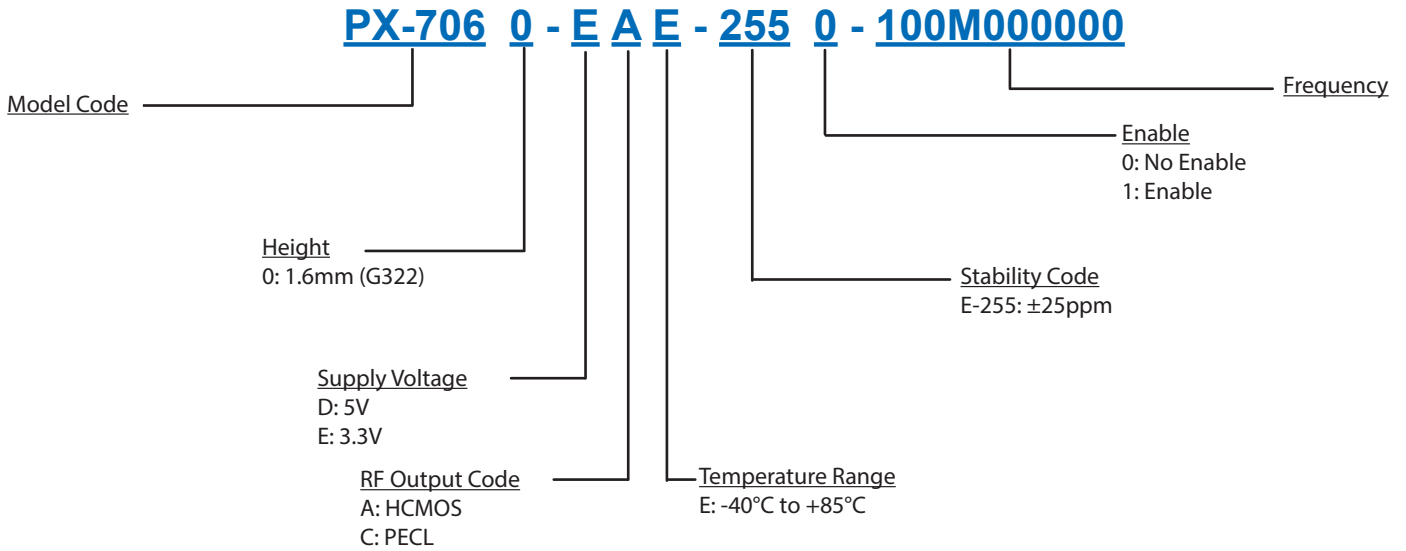
Recommended Reflow Profile



Profile Feature	Pb-Free Assembly/ Sn-Pb Assembly	Profile Feature	Pb-Free Assembly/ Sn-Pb Assembly
Average ramp-up rate (T_L to T_p)	3°C/second max.	Time 25°C to Peak Temperature	8 minutes max.
Preheat -Temperature Min $T_{s \text{ min}}$ -Temperature Max $T_{s \text{ max}}$ -Time (min to max) t_s	150°C 200°C 60-180 seconds	Time maintained above -Temperature (T_L) -Time (t_L)	217°C 60-150 seconds
$T_{s \text{ max}}$ to T_L -Ramp-up Rate	3°C/second max		
Time maintained above -Temperature (T_L) -Time (t_L)	217°C 60-150 seconds	Time within 5°C of actual Peak Temperature (t_p)	20-40 seconds
Peak Temperature (T_p)	max 260°C	Ramp-down Rate	6°C/ second max

Note: All temperatures refer to topside of the package, measured on the package body surface. SMD oscillators must be on the top side of the PCB during the reflow process.

Ordering Information



Notes:

1. Contact factory for improved stabilities or additional product options. Not all options and codes are available at all frequencies.
2. Unless other stated all values are valid after warm-up time and refer to typical conditions for supply voltage, frequency control voltage, load, temperature (25°C).
3. Phase noise degrades with increasing output frequency.
4. Subject to technical modification.
5. Contact factory for availability.

For Additional Information, Please Contact

USA:

Vectron International
267 Lowell Road, Unit 102
Hudson, NH 03051
Tel: 1.888.328.7661
Fax: 1.888.329.8328

Europe:

Vectron International
Landstrasse, D-74924
Neckarbischofsheim, Germany
Tel: +49 (0) 7268-801-0
Fax: +49 (0) 7268-801-281

Asia:

Vectron International
68 Yin Cheng Road(C), 22nd Floor
One LuJiaZui
Pudong, Shanghai 200120, China
Tel: +86 21 6194 6886
Fax: +86 21 6194 6699

Disclaimer

Vectron International reserves the right to make changes to the product(s) and or information contained herein without notice. No liability is assumed as a result of their use or application. No rights under any patent accompany the sale of any such product(s) or information.

Rev: 10/2016