

PLEASE CHECK WWW.MOLEX.COM FOR LATEST PART INFORMATION

Part Number: [0399400221](#)
Status: **Active**
Description: 5.08mm (.200") Pitch Beau™ EuroMate™ Pluggable PCB Terminal Block, Dual Level, 90° Wire Entry, 21 Circuits

Documents:

[Drawing \(PDF\)](#) [RoHS Certificate of Compliance \(PDF\)](#)
[Product Specification PS-39940-001 \(PDF\)](#)

Agency Certification

UL E48521

General

Product Family	Terminal Blocks
Series	39940
Application	Wire-to-Board
Comments	Gold plating available
Component Type	Plug
Product Literature Order No	USA-264
Product Name	EuroMate™ Pluggable
Type	Euro Block

Physical

Circuits (Loaded)	21
Color - Resin	Black
Entry Angle	Horizontal
Flammability	94V-0
Lock to Mating Part	None
Material - Resin	Nylon
Number of Rows	2
Orientation	Vertical
Panel Mount	No
Pitch - Mating Interface (in)	0.200 In
Pitch - Mating Interface (mm)	5.08 mm
Polarized to Mating Part	Yes
Stackable	No
Temperature Range - Operating	130°C
Termination Interface: Style	Screw or Lug
Wire Size AWG	12, 14, 16, 18, 20, 22
Wire Size mm²	0.50 - 2.50

Electrical

Current - Maximum per Contact	15A
Voltage - Maximum	300V

Material Info

Old Part Number	940821
-----------------	--------

Reference - Drawing Numbers

Product Specification	PS-39940-001
Sales Drawing	SD-39940-004



EU RoHS

**ELV and RoHS
Compliant**
REACH SVHC
 Not Reviewed
**Halogen-Free
Status**
 Not Reviewed

China RoHS



**Need more information on product
environmental compliance?**

Email productcompliance@molex.com
 For a multiple part number RoHS Certificate of Compliance, [click here](#)

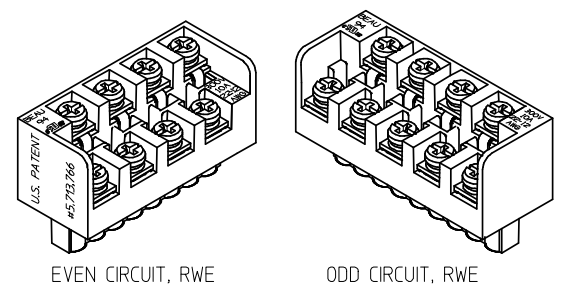
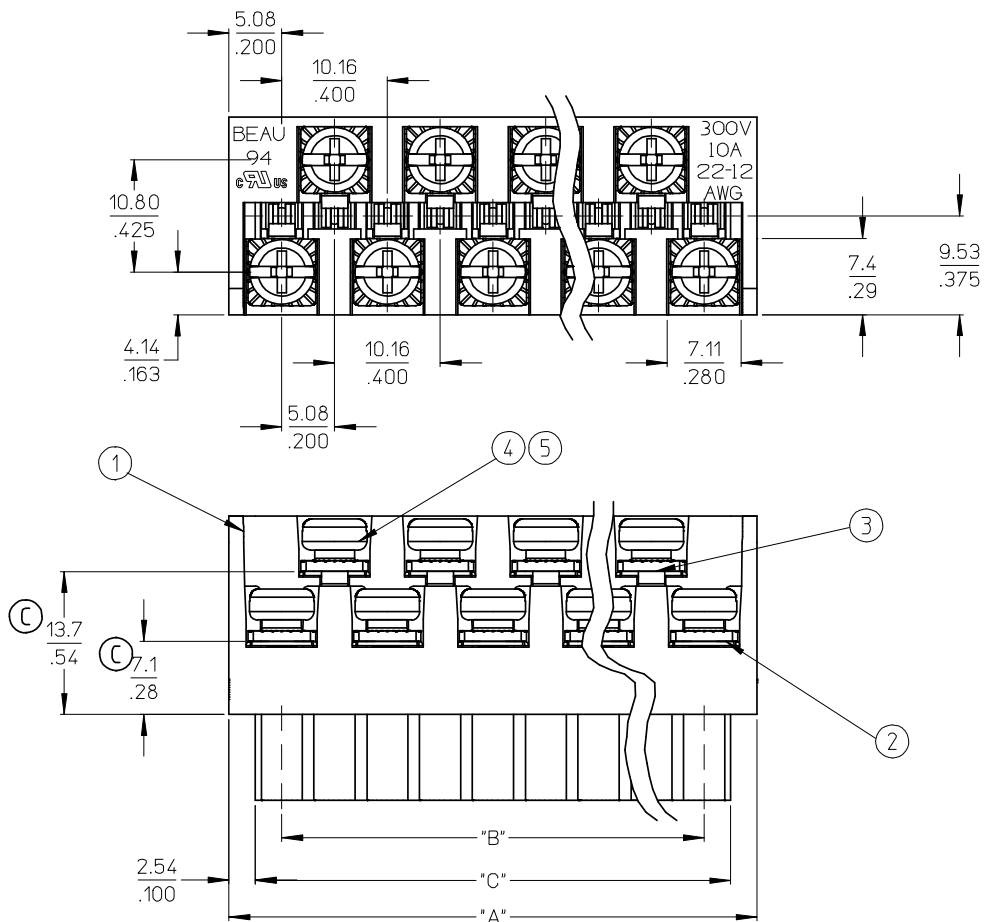
Please visit the [Contact Us](#) section for any non-product compliance questions.

Search Parts in this Series

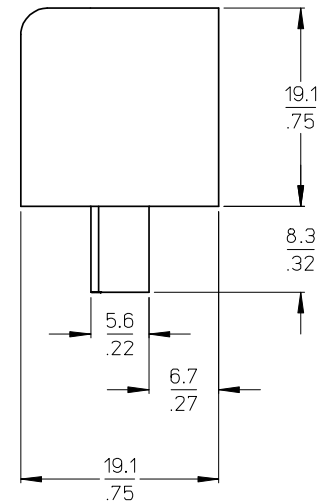
[39940Series](#)

Mates With

[39531-0021](#) , [39531-1021](#) , [39532-0021](#) , [39532-1021](#)



AUXILIARY VIEWS
SCALE 1:1



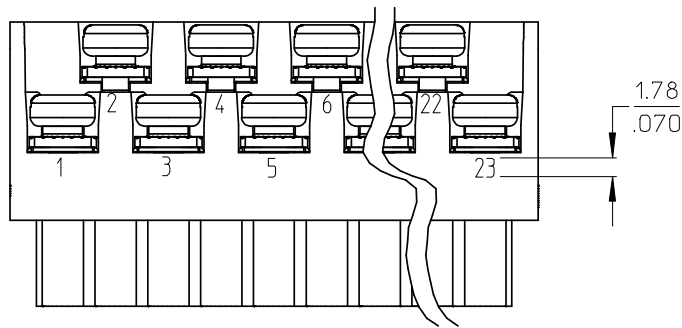
- NOTES:
1. MATERIAL: SEE TABLE
 2. FINISHES: SEE TABLE
 3. PRODUCT SPECIFICATION: NOT REQUIRED
 4. PACKAGING: NOT REQUIRED
 5. MATES WITH: MOST 5.08 (.200) PIN HEADERS
 6. "XX" REFERS TO THE QUANTITY OF CIRCUITS
 7. ROHS COMPLIANT

ODD CIRCUIT CONFIGURATION SHOWN

5	XX	XX	SCREW, M3.5 X .280	STEEL	ZINC CHROMATE
4	XX	XX	NUT, M3.5, HEX	STEEL	ZINC CHROMATE
3	XX/2	(XX-1)/2	REAR ROW TERM. (LONG)	PHOS. BRONZE	HOT TIN DIP
2	XX/2	(XX+1)/2	FRONT ROW TERM. (SHORT)	PHOS. BRONZE	HOT TIN DIP
1	1	1	BARRIER	THERMOPLASTIC	BLACK
ITEM	QTY. (EVEN NO. OF CIRCUITS)	QTY. (ODD NO. OF CIRCUITS)	DESCRIPTION	MATERIAL	FINISH

REVISED & REDRAWN EC NO: WNA2008-0391 DRWN: JENC INAS 2008/07/01 CHK'D: CYORK 2008/07/02 APPR: JMACNEIL 2008/07/07 REV DESCRIPTION	QUALITY SYMBOLS ▽=0 ▽=0		GENERAL TOLERANCES (UNLESS SPECIFIED)		DIMENSION STYLE MM/IN		SCALE 2:1		DESIGN UNITS INCH		THIRD ANGLE PROJECTION	
	4 PLACES ± --- ± --- 3 PLACES ± --- ± .005 2 PLACES ± 0.13 ± .01 1 PLACE ± 0.3 ± ---		ANGULAR ± 2 °		DRAWN BY J. FARMER 2004/12/06		DATE 2004/12/06		TITLE 5.08/.200 PLUG ASSY, RWE WITH CLOSED ENDS (9408XX)			
	DRAFT WHERE APPLICABLE MUST REMAIN WITHIN DIMENSIONS				APPROVED BY GHR 2004/12/06		DATE 2004/12/06		MOLEX INCORPORATED			
	MATERIAL NO. SEE SHEET 2						DOCUMENT NO. SD-39940-004				SHEET NO. 1 OF 2	

NO. OF CIRC. "XX"	"A" DIM.		"B" DIM.		"C" $\begin{matrix} +.00 \\ -.25 \end{matrix}$ [$\begin{matrix} +.000 \\ -.010 \end{matrix}$]		MATERIAL NO. (STANDARD)
03	20.3	[.80]	10.16	[.400]	15.2	[.60]	399400203
04	25.4	[1.00]	15.24	[.600]	20.3	[.80]	399400204
05	30.5	[1.20]	20.32	[.800]	25.4	[1.00]	399400205
06	35.6	[1.40]	25.40	[1.000]	30.5	[1.20]	399400206
07	40.6	[1.60]	30.48	[1.200]	35.6	[1.40]	399400207
08	45.7	[1.80]	35.56	[1.400]	40.6	[1.60]	399400208
09	50.8	[2.00]	40.64	[1.600]	45.7	[1.80]	399400209
10	55.9	[2.20]	45.72	[1.800]	50.8	[2.00]	399400210
11	61.0	[2.40]	50.80	[2.000]	55.9	[2.20]	399400211
12	66.0	[2.60]	55.88	[2.200]	61.0	[2.40]	399400212
13	71.1	[2.80]	60.96	[2.400]	66.0	[2.60]	399400213
14	76.2	[3.00]	66.04	[2.600]	71.1	[2.80]	399400214
15	81.3	[3.20]	71.12	[2.800]	76.2	[3.00]	399400215
16	86.4	[3.40]	76.20	[3.000]	81.3	[3.20]	399400216
17	91.4	[3.60]	81.28	[3.200]	86.4	[3.40]	399400217
18	96.5	[3.80]	86.36	[3.400]	91.4	[3.60]	399400218
19	101.6	[4.00]	91.44	[3.600]	96.5	[3.80]	399400219
20	106.7	[4.20]	96.52	[3.800]	101.6	[4.00]	399400220
21	111.8	[4.40]	101.60	[4.000]	106.7	[4.20]	399400221
22	116.9	[4.60]	106.68	[4.200]	111.8	[4.40]	399400222
23	121.9	[4.80]	111.76	[4.400]	116.8	[4.60]	399400223
24	127.0	[5.00]	116.84	[4.600]	121.9	[4.80]	399400224



OPTIONAL
10A IMPRINTING
(ODD CIRCUIT CONFIGURATION SHOWN)

SEE SHEET ONE EEC NO: WNA2008-0391 DRWN: JENCINAS 2008/07/01 CHKD: CYORK 2008/07/02 APPR: JMACNEIL 2008/07/07	QUALITY SYMBOLS	GENERAL TOLERANCES (UNLESS SPECIFIED)		DIMENSION STYLE	SCALE	DESIGN UNITS	THIRD ANGLE PROJECTION	
	$\blacktriangledown=0$ $\nabla=0$	mm	INCH	MM/IN	2:1	INCH		
		4 PLACES \pm ---	\pm ---		DRAWN BY	DATE	TITLE	
		3 PLACES \pm ---	\pm .005		J. FARMER	2004/12/06	5.08/.200 PLUG ASSY, RWE WITH CLOSED ENDS (9408XX)	
	2 PLACES \pm 0.13	\pm .01		CHECKED BY	DATE			
	1 PLACE \pm 0.3	\pm ---		R. KEMP	2004/12/06			
		ANGULAR \pm 2 °		APPROVED BY	DATE			
				GHR	2004/12/06			
				MATERIAL NO.		DOCUMENT NO.		
				SEE CHART		MOLEX INCORPORATED		
				DRAFT WHERE APPLICABLE MUST REMAIN WITHIN DIMENSIONS		SD-39940-004		
				SIZE B	THIS DRAWING CONTAINS INFORMATION THAT IS PROPRIETARY TO MOLEX INCORPORATED AND SHOULD NOT BE USED WITHOUT WRITTEN PERMISSION			
							SHEET NO. 2 OF 2	