

**PLEASE CHECK WWW.MOLEX.COM FOR LATEST PART INFORMATION**

**Part Number:** [0350220006](#)  
**Status:** **Active**  
**Description:** 2.50mm (.098") Pitch Board-In Crimp Housing, 2.95mm (.116") Height, Right Angle and Vertical, 6 Circuits

**Documents:**

<a href="#">3D Model</a>	<a href="#">Product Specification PS-35022-003 (PDF)</a>
<a href="#">Drawing (PDF)</a>	<a href="#">RoHS Certificate of Compliance (PDF)</a>
<a href="#">Product Specification PS-35021-001 (PDF)</a>	

**Agency Certification**

CSA	LR19980
UL	E29179

**General**

Product Family	Crimp Housings
Series	<a href="#">35022</a>
Product Name	Board-In

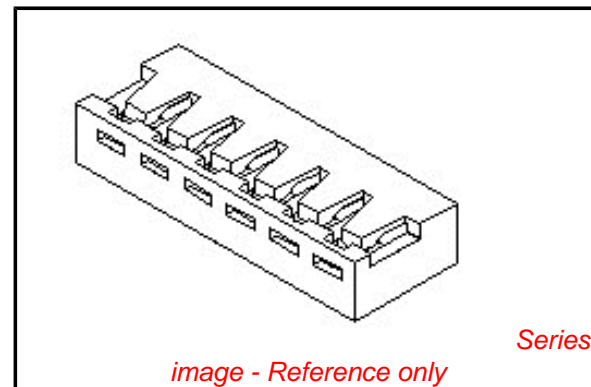
**Physical**

Circuits (maximum)	6
Color - Resin	Natural
Flammability	94V-0
Gender	Male
Glow-Wire Compliant	No
Lock to Mating Part	None
Material - Resin	Nylon
Number of Rows	1
Packaging Type	Bag
Panel Mount	No
Pitch - Mating Interface (in)	0.098 In
Pitch - Mating Interface (mm)	2.50 mm
Stackable	No
Temperature Range - Operating	-40°C to +105°C

**Material Info**

**Reference - Drawing Numbers**

Product Specification	PS-35021-001, PS-35022-003, RPS-35022-001
Sales Drawing	SD-35022-00**



**EU RoHS**

**ELV and RoHS Compliant**  
**REACH SVHC Contains SVHC: No**  
**Halogen-Free Status**

**China RoHS**



**Not Halogen-Free**

**Need more information on product environmental compliance?**

Email [productcompliance@molex.com](mailto:productcompliance@molex.com)  
 For a multiple part number RoHS Certificate of Compliance, [click here](#)

Please visit the [Contact Us](#) section for any non-product compliance questions.

**Search Parts in this Series**

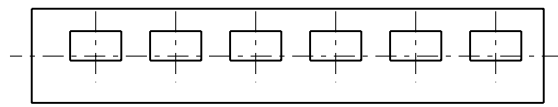
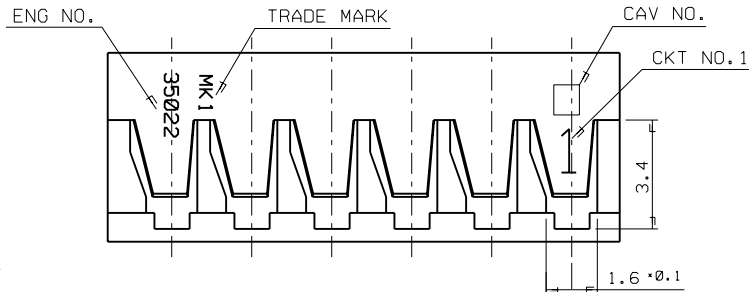
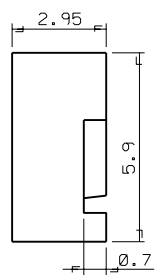
[35022Series](#)

**Use With**

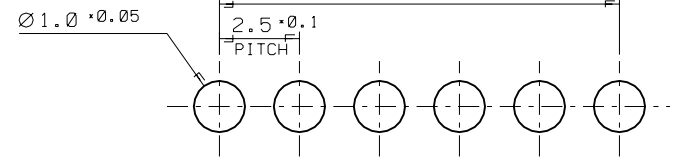
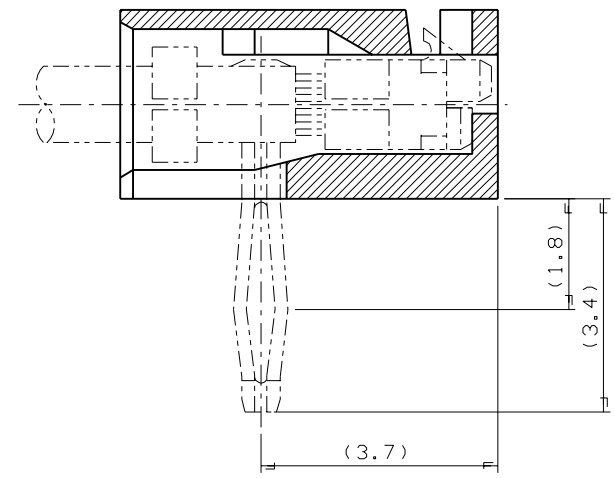
[35044](#) , [35021](#)

**PLEASE CHECK WWW.MOLEX.COM FOR LATEST PART INFORMATION**

PROJECT NO. SIMILAR ITEM EDP NO. 35022-00\*\* ENG. NO. SD 35022-00\*\*



NOTE  
 1. MATERIAL : NYLON 66 UL94V-0  
 2. APPLIED TERMINAL : 35021-1001/1101



P.C. BOARD LAY OUT  
(THK. : 1.6T)

B	A	ENG NO.	CKT NO.	B	A	ENG NO.	CKT NO.
41.0	37.5	35022-0016	16	23.5	20.0	-0009	9
38.5	35.0	-0015	15	21.0	17.5	-0008	8
36.0	32.5	-0014	14	18.5	15.0	-0007	7
33.5	30.0	-0013	13	16.0	12.5	-0006	6
31.0	27.5	-0012	12	13.5	10.0	-0005	5
28.5	25.0	-0011	11	11.0	7.5	-0004	4
26.0	22.5	-0010	10	8.5	5.0	-0003	3
				6.0	2.5	35022-0002	2

				MATERIAL NYLON 66 UL94V-0		molex MOLEX-KOREA CO.,LTD.	
				GENERAL TOLERANCE DIMENSION : 0.3		DRAWN BY HSSHIN	
				ANGLE : 1°		CHK'D BY	
G	REVISED	96-019	96-2/14	DIMENSION CLASSIFICATION ▽ : CRITICAL ▼ : MAJOR ( ) : REFERENCE		APP'D BY	
F	REDRAWING	93-021	93-10/26	ASS'Y PART		SCALE 7-1	
LTR	REVISION RECORD	ECN	DATE	DESCRIPTION/ENG. NO.		TITLE: 2.5MM PITCH R/A B-IN CONNECTOR HOUSING	
REVISE ONLY ON CAD SYSTEM						SHEET 10F1	
						ENG. NO. SD 35022-00**	
						REV G	