

PLEASE CHECK WWW.MOLEX.COM FOR LATEST PART INFORMATION

Part Number: [0399300319](#)
Status: **Active**
Description: 3.81mm (.150") Pitch Beau™ EuroMate™ Pluggable PCB Terminal Block, Dual Level, 270° Wire Entry, 19 Circuits

Documents:

[Drawing \(PDF\)](#) [RoHS Certificate of Compliance \(PDF\)](#)

Agency Certification

UL E48521

General

Product Family	Terminal Blocks
Series	39930
Application	Wire-to-Board
Component Type	Plug
Product Literature Order No	USA-264
Product Name	EuroMate™ Pluggable
Type	Euro Block

Physical

Circuits (Loaded)	19
Color - Resin	Black
Entry Angle	Horizontal
Flammability	94V-0
Lock to Mating Part	None
Material - Plating Mating	Tin
Material - Plating Termination	Tin
Material - Resin	Nylon
Number of Rows	2
Orientation	Vertical
Panel Mount	No
Pitch - Mating Interface (in)	0.150 In
Pitch - Mating Interface (mm)	3.81 mm
Polarized to Mating Part	Yes
Stackable	No
Temperature Range - Operating	130°C
Termination Interface: Style	Screw or Lug
Wire Size AWG	14, 16, 18, 20, 22
Wire Size mm²	0.50 - 1.50

Electrical

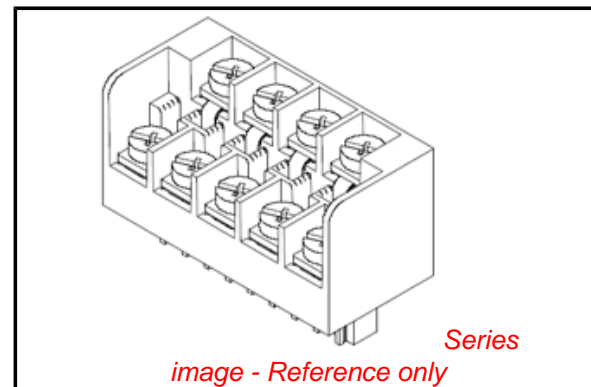
Current - Maximum per Contact	12A
Voltage - Maximum	300V

Material Info

Old Part Number 930919

Reference - Drawing Numbers

Sales Drawing SD-39930-004



EU RoHS

ELV and RoHS Compliant
REACH SVHC
 Not Reviewed
Halogen-Free Status
 Not Reviewed

China RoHS



Need more information on product environmental compliance?

Email productcompliance@molex.com
 For a multiple part number RoHS Certificate of Compliance, [click here](#)

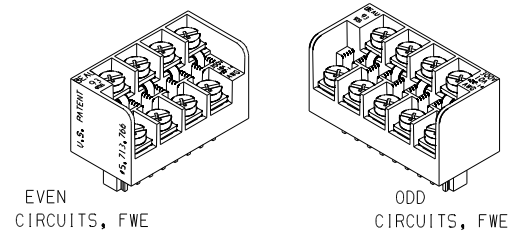
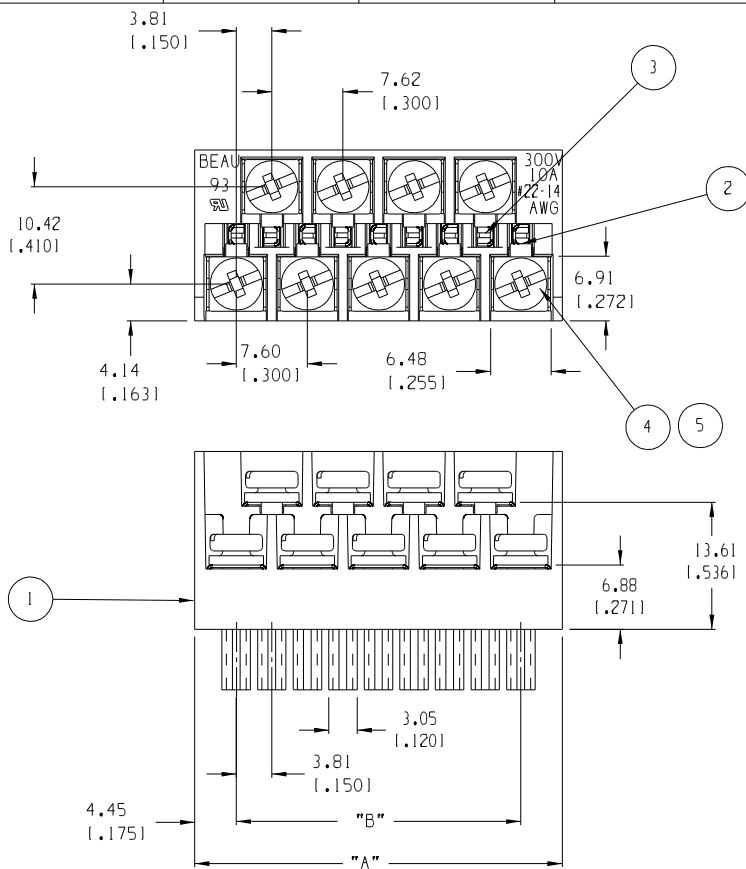
Please visit the [Contact Us](#) section for any non-product compliance questions.

Search Parts in this Series

[39930Series](#)

Mates With

[39511-1019](#) , [39512-1019](#)



ISO VIEW SCALE 1:1

NUMBER OF CIRCUITS	"A" DIM.	"B" DIM.	MATERIAL NUMBER
03	16.51 (1.6501)	7.62 (1.300)	399300303
04	20.32 (1.8001)	11.43 (1.4501)	399300304
05	24.13 (1.9501)	15.24 (1.6001)	399300305
06	27.94 (1.1001)	19.05 (1.7501)	399300306
07	31.75 (1.2501)	22.86 (1.9001)	399300307
08	35.56 (1.4001)	26.67 (1.0501)	399300308
09	39.37 (1.5501)	30.48 (1.2001)	399300309
10	43.18 (1.7001)	34.29 (1.3501)	399300310
11	46.99 (1.8501)	38.10 (1.5001)	399300311
12	50.80 (2.0001)	41.91 (1.6501)	399300312
13	54.61 (2.1501)	45.72 (1.8001)	399300313
14	58.42 (2.3001)	49.53 (1.9501)	399300314
15	62.23 (2.4501)	53.34 (2.1001)	399300315
16	66.04 (2.6001)	57.15 (2.2501)	399300316
17	69.85 (2.7501)	60.96 (2.4001)	399300317
18	73.66 (2.9001)	64.77 (2.5501)	399300318
19	77.47 (3.0501)	68.58 (2.7001)	399300319
20	81.28 (3.2001)	72.39 (2.8501)	399300320
21	85.09 (3.3501)	76.20 (3.0001)	399300321

NOTES:

1. MATERIAL: SEE TABLE
2. FINISHES: SEE TABLE
3. PRODUCT SPECIFICATION: NOT REQUIRED
4. INCH DIMS ARE SHOWN IN PARENTHESIS (XXX)
5. "XX" REFERS TO THE NUMBER OF CIRCUITS
6. MATES WITH 3.81MM HEADERS

ITEM	QTY. (EVEN NO. OF CIRCUITS)	QTY. (ODD NO. OF CIRCUITS)	DESCRIPTION	MATERIAL	FINISH
5	"XX"	"XX"	SCREW M3 SQUARE WASHER	STEEL	ZINC CHROMATE
4	"XX"	"XX"	NUT HEX M3	STEEL	ZINC CHROMATE
3	XX/2	(XX-1)/2	TERMINAL LONG	COPPER	TIN
2	XX/2	(XX+1)/2	TERMINAL SHORT	COPPER	TIN
1	1	1	BODY FWE 3.81	THERMOPLASTIC	BLACK

EC NO. 11648	DRWN: RK 8-23-05
CH'K:	APPR:
DESCRIPTION	REV

QUALITY SYMBOLS	GENERAL TOLERANCES: (UNLESS SPECIFIED)
MAJOR	mm INCH
CRITICAL	4 PLACES ±.0015 ±.0015
C	3 PLACES ±.038 ±.005
SPC	2 PLACES ±.13 ±.01
S	1 PLACE ±.3
	ANGULAR: ±2°
	DRAFT WHERE APPLICABLE MUST REMAIN WITHIN DIMENSIONS

SCALE 2:1	DESIGN UNITS
<input checked="" type="checkbox"/> mm <input type="checkbox"/> INCH	<input type="checkbox"/> mm <input checked="" type="checkbox"/> INCH
DRAWN BY & DATE	CHECKED BY & DATE
J. FARMER 12-02-04	R. KEMP 12-02-04
APPROVED BY & DATE	GHR 12-02-04
CAD FILENAME	9309XX.PRT

PROJECT NO. -	-	-
DIMENSIONS:	SHT	REV
<input checked="" type="checkbox"/> mm INCH <input type="checkbox"/> INCH mm <input type="checkbox"/> mm ONLY	REVISE ON CAD ONLY	
TITLE: PLUG, FWE, 3.81MM EUROMATE ASY -C		
MOLEX INCORPORATED		
MATERIAL NO. SEE CHART	DRAWING NO. SD-39930-004	SHEET NO. 1 OF 1
THIS DRAWING CONTAINS INFORMATION THAT IS PROPRIETARY TO MOLEX INCORPORATED AND SHOULD NOT BE USED WITHOUT WRITTEN PERMISSION.		
		SIZE B