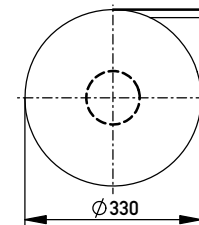
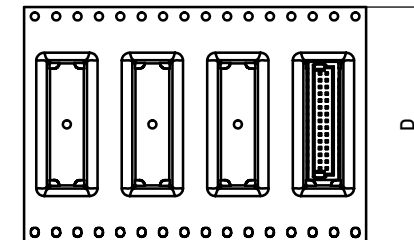


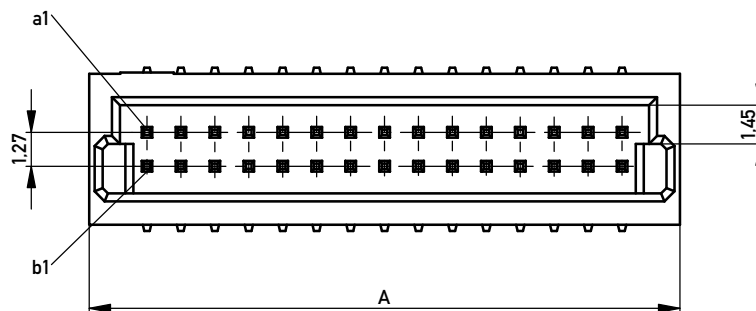
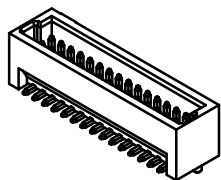
Verpackt in Gurtverpackung
Tape on Reel Packaging
Verpackungseinheit: 600 Stück
Packaging unit: 600pcs



Abspulrichtung - Reel off Direction →



M 2 : 1



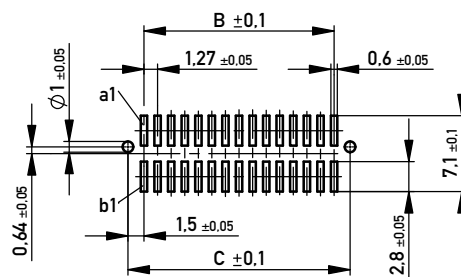
Verpackung Stange / Stange & Ansaughaube
packaging tube / tube&cap

100	9
80	11
70	12
60	14
50	17
40	21
30	27
20	38
10	64
Polzahl No. of positions	Stück / pieces

Masse und Toleranzen in Übereinstimmung mit ANSI Y15.5M-1994 /
Interpret dimensions according to ANSI Y15.5M-1994

109054	109045	109036	109027	109018	109009	100	66.56	62.23	65.23	88
109053	109044	109035	109026	109017	109008	80	53.86	49.53	52.53	72
109052	109043	109034	109025	109016	109007	70	47.51	43.18	46.18	72
109051	109042	109033	109024	109015	109006	60	41.16	36.83	39.83	56
109050	109041	109032	109023	109014	109005	50	34.81	30.48	33.48	56
109049	109040	109031	109022	109013	109004	40	28.46	24.13	27.13	44
109048	109039	109030	109021	109012	109003	30	22.11	17.78	20.78	44
109047	109038	109029	109020	109011	109002	20	15.76	11.43	14.43	32
109046	109037	109028	109019	109010	109001	10	9.41	5.08	8.08	24
Id-Nr. tape&reel 100 mating- cycles	Id-Nr. tape&reel 10 mating- cycles	Id-Nr. tube&cap 100 mating- cycles	Id-Nr. tube&cap 10 mating- cycles	Id-Nr. tube 100 mating- cycles	Id-Nr. tube 10 mating- cycles	Polzahl no of positions	Mass A	Mass B	Mass C	Mass D

Layout
M 2 : 1



Bei Gurtverpackung ist Ansaughaube immer montiert.
Tape & reel packaging is always with assembly cap.

Copyright by ERNI GmbH
Proprietary notice pursuant to ISO 9006 to be observed.

Information:	Tolerances	Scale 5:1
All rights reserved. Only for Information. To ensure that this is the latest version of this drawing, please contact one of the ERNI companies before using.	Subject to modification without prior notice. Drawing will not be updated.	Designation MiniMez Vertical Male SMT with locating pegs 1.9mm
Index	Date	www.ERNI.com
		109000
		Class MINIMEZ
		I A3