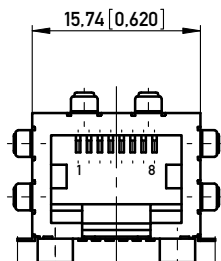


1.27 [0.050]

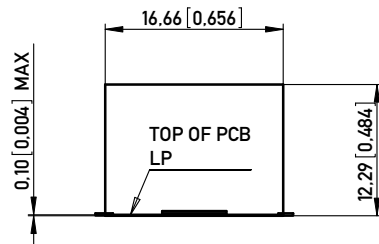


15.74 [0.620]

11.43 ±0.13 [0.450 ±0.005]

18.50 ±0.25 [0.728 ±0.010]

RECOMMENDED PANEL CUTOUT
EMPFOHLENER FRONTPLATTEN-AUSSCHNITT

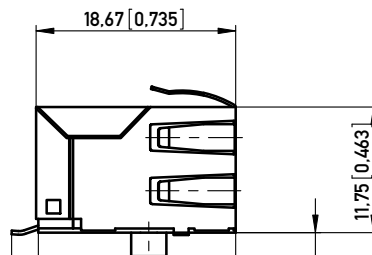


0.10 [0.004] MAX

16.66 [0.656]

12.29 [0.484]

TOP OF PCB
LP



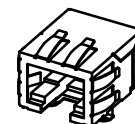
18.67 [0.735]

11.75 [0.463]

2.50 ^{+0.30}/_{0.00} [0.098 ^{+0.012}/_{0.000}]

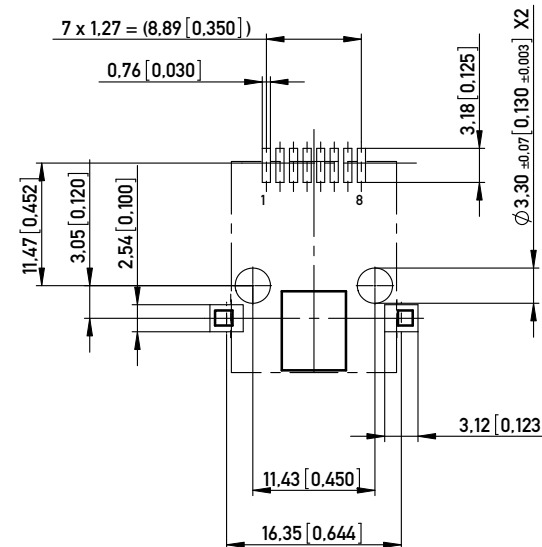
8.13 [0.320]

2.50 [0.098]



1:1

RECOMMENDED PCB LAYOUT (COMPONENT SIDE VIEW)
EMPFOHLENES LEITERPLATTEN-LAYOUT (BESTUECKUNGSSEITE)
TOL. ±0.05 [0.002] UNLESS NOTED



7 x 1.27 = (8.89 [0.350])

0.76 [0.030]

3.18 [0.125]

11.47 [0.452]

3.05 [0.120]

2.54 [0.100]

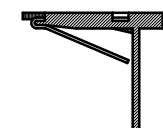
Ø 3.30 ^{+0.07}/_{-0.003} [X2]

3.12 [0.123]

11.43 [0.450]

16.35 [0.644]

IMPROVED CONTACT DESIGN
(PRE BEND)



- NOTE 1: WITH PEGS, SMT SIDE SHIELD TABS AND SMT TERMINALS (STP)
NOTE 2: UL APPROVED E145613 AND MEETS FCC REQUIREMENTS
NOTE 3: PANEL GROUND FLANGES BOTH SIDES AND TOP (GF5)
NOTE 4: RoHS COMPLIANT

Technical specifications

Materials & Finish	Standard applic.	Value
Insulation body	Standard description	PA6T/66 FR52 30%
Contact material	Standard description	C5210 (acc. JIS)
Contact finish, mating zone	Thickness of plating	30 µin Au over 50 µin Ni
Contact finish termination zone	Thickness of plating	80 µin matte Sn over 50 µin Ni
Shell/shield material	Standard description	C2680 (acc. JIS)
Shell/shield plating	Thickness of plating	50 µin Ni

Assembly process	Value
Packaging	see chart
Solder temperature	260°C at 3-5s
Suitable assembly process	reflow

Approvals	UL 94	Value
UL insulation body	UL 94	V0
UL File No.		E145613
RoHS compliant		Yes

Part Marking	required
date of manufacturing and RC	required
RoHS compliant	required
part number	required
Company Logo	optional

Test Data	Standard applic.	Value
Mechanical properties		
Insertion/withdrawal force	IEC 603-7	max. 20 N
Mechanical operations	IEC 512-5, 9a	min. 1.000
Effectiveness of connector coupling device	IEC 512-8, 15f	50 N

Electrical properties		
Creepage / clearance distances		
a) Contact - contact	IEC 807-3	0.52 mm
b) Contact - shell	IEC 807-3	min. 1.0 mm
Voltage proof (Dielectric Withstand Voltage)		
a) Contact - contact	IEC 512-2, 4a	min. 1.000 V AC/DC
b) Contact - shell/testpanel	IEC 512-2, 4a	min. 1.500 V AC/DC
Current carrying capacity	IEC 512-3, 5b	1.5 A @ 25° C
Contact resistance	IEC 512-2, 2a	max. 30 mOhm
Insulation resistance	IEC 512-2, 3a	min. 500 MOhm

Environmental properties		
Operation temperature		0 - 70° C
Dry heat	IEC 512 . 11i	70° C/16h
Damp heat, steady	IEC 512 . 11c	55° C
Damp heat	IEC 512 . 11m	55° C/21 days
Cold	IEC 512 . 11j	-40° C/2h
Rapid change of temp.	IEC 512 . 11d	25 cycles -40° C /70° C
Vibration	IEC 512 . 6d	10 sweeps/6h
Shock	IEC 512 . 6c	halbsinus 15g/11ms

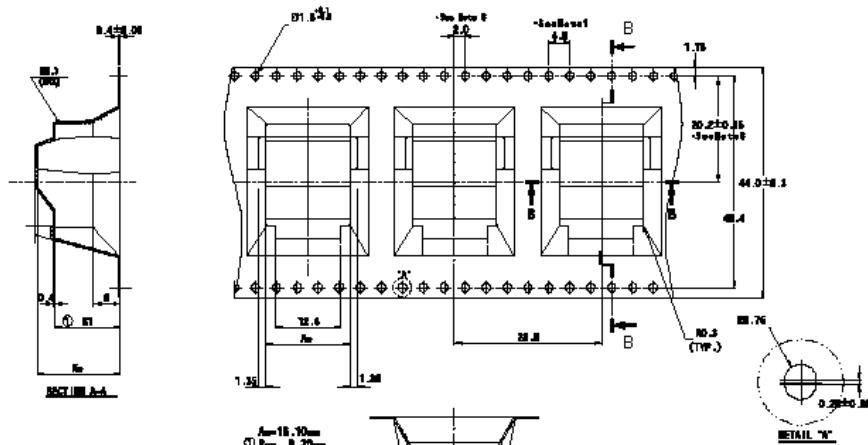
PART NO. IDENT. NR.	PACKING VERPACKUNG	MAXCONN NO. IDENT. NR.
133489	TRAY	MJS-S-88-STP-GF5-30
133936	TAPE & REEL 120 PIECES PER REEL	MJS-S-88-STP-GF5-30-TR

QUALITY INSPECTION / WE-PRÜFUNG:

- Gauging procedure / Lehrenprüfung
- mating zone / Steckgesicht
- termination zone / Anschlussseite
- Contact finish / Oberflächenbeschaffenheit
- mating zone / Steckkontakte
- termination zone / Anschlusspins

Dimension Nr.	Tolerances ISO 2768-m DIN 7167	Scale 2:1	Tool-Nr.
Drawn 10.08.2007 Checked 10.08.2007 Approved	Date 10.08.2007	Name Krammer	Designation MOD JACK - MJLS 8P8C, 1X1, SMT 133939
	Name Blind		
	Electronics GmbH D-73099 ADELBERG		
	Class MJ	(1/2) A3	

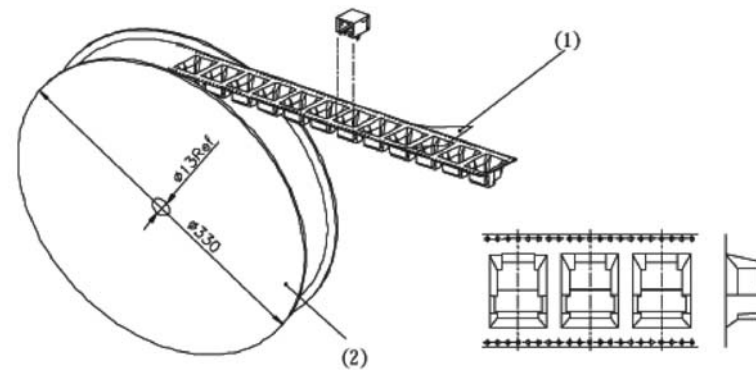
Copyright by ERNI GmbH
Proprietary notice pursuant to ISO 16018 to be observed.



Notes:

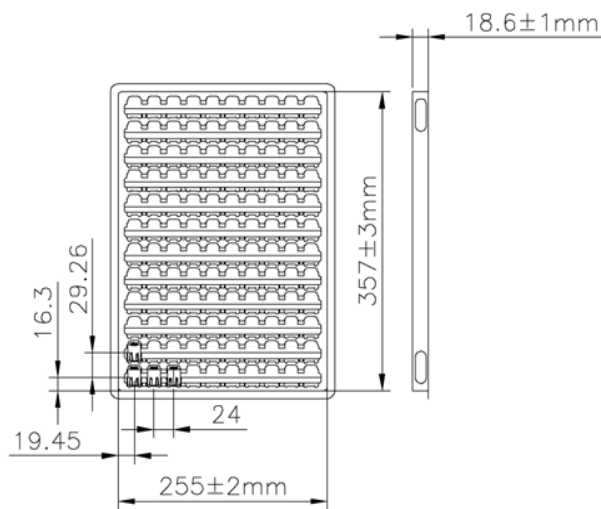
1. 10 sprockets to pitch cumulative tolerance ± 0.2
2. Carrier thickness to 100mm.
3. Material: 1:1C low deformation polyester.
4. As and dimensions are to 0.2mm tolerance unless otherwise specified.
5. To measure from a plane which is identical to the position of the sprocket in the carrier.
6. Photoresistive layer shall be applied in accordance with the position of pocket, not pockets to.

- ① ± 0.15 mm
- ② ± 0.20 mm
- ③ ± 0.12 mm
- ④ ± 0.15 mm



THE FINISHED PART SHALL BE PUT INTO CARRIER (1) ONE BY ONE, KEEP EMPTY FOR BEGINNING 5PCS & LAST 5 PCS, SEAL WITH TAPE (2) ONE REEL CONTAINS 120PCS

133936 TAPE & REEL PACKAGE



133489 TRAY PACKAGE

Dimension Nr.	Tolerances	 All Dimensions in mm [in]	Scale	2:1	Tool-Nr.:	
	ISO 2768-m DIN 7167		Material			
Drawn Checked Approved	Date	Name	Designation MOD JACK - MJLS 8P8C, 1x1, SMT			
	10.08.2007	Krammer				
	10.08.2007	Blind				
		Electronics GmbH D-73099 ADELBERG	133939		(2/2)	
b	14.05.2010	Krammer	Class		MJ	A3
Index	Modification Nr.	Date	Name			

Copyright by ERNI GmbH. Proprietary notice pursuant to ISO 16018 to be observed.