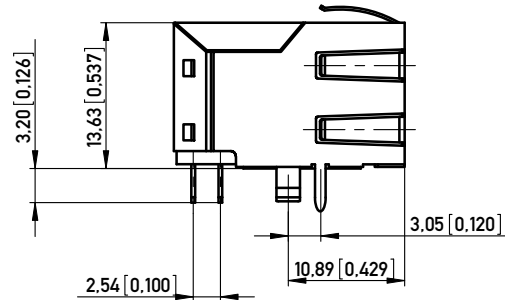
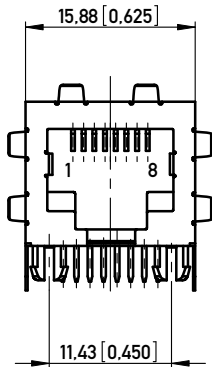
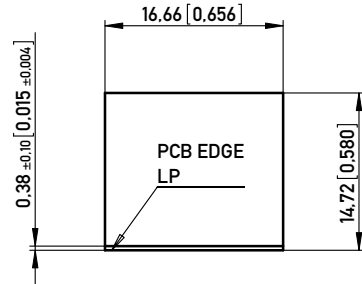
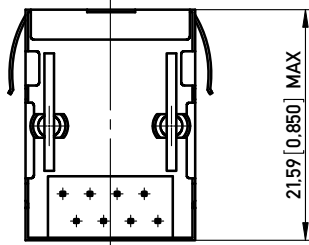
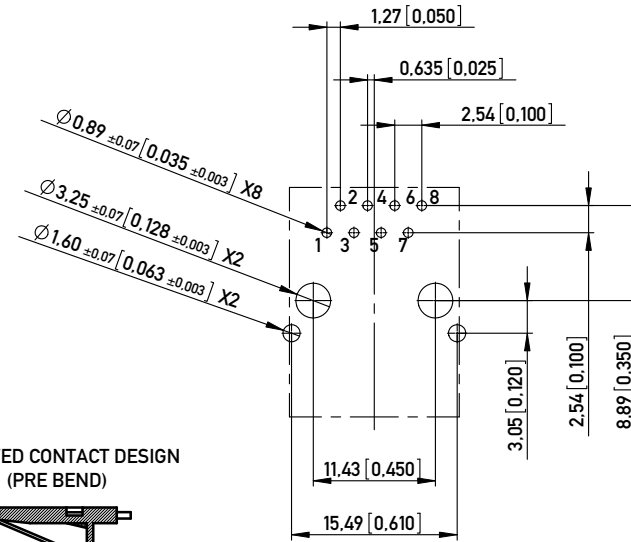


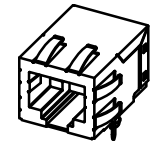
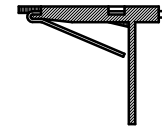
RECOMMENDED PANEL CUTOUT
EMPFOHLENER FRONTPLATTEN-AUSSCHNITT



RECOMMENDED PCB LAYOUT (COMPONENT SIDE VIEW)
EMPFOHLENES LEITERPLATTEN-LAYOUT (BESTUECKUNGSSEITE)
TOL. ±0.05 [0.002] UNLESS NOTED



IMPROVED CONTACT DESIGN
(PRE BEND)



1:1

- NOTE 1: SIDE SHIELD PINS IN Front 3.05 mm (F)
NOTE 2: PANEL GROUND FLANGES BOTH SIDES AND TOP (GF5)
NOTE 3: RoHS COMPLIANT

Technical specifications

Materials & Finish	Standard applic.	Value
Contact material	Standard description	C5210 (acc. JIS)
Contact finish, mating zone	Thickness of plating	30 µm Au over 50 µm Ni
Contact finish termination zone	Thickness of plating	80 µm matte Sn over 50 µm Ni
Shell/shield material	Standard description	C2680 (acc. JIS)
Shell/shield plating	Thickness of plating	50 µm Ni

Assembly process

Assembly process	Standard applic.	Value
Packaging	Tray	

Approvals

Approvals	Standard applic.	Value
UL insulation body	UL 94	V0
UL File No.	E145613	
RoHS compliant	Yes	

Test Data

Test Data	Standard applic.	Value
Mechanical properties		
Insertion/withdrawal force	IEC 603-7	max. 20 N
Mechanical operations	IEC 512-5, 9a	min. 1.000
Effectiveness of connector coupling device	IEC 512-8, 15f	50 N
Electrical properties		
Creepage / clearance distances		
a) Contact - contact	IEC 807-3	0.52 mm
b) Contact - shell	IEC 807-3	min. 1.0 mm
Voltage proof (Dielectric Withstand Voltage)		
a) Contact - contact	IEC 512-2, 4a	min. 1.000 V AC/DC
b) Contact - shell/testpanel	IEC 512-2, 4a	min. 1.500 V AC/DC
Current carrying capacity	IEC 512-3, 5b	1.5 A @ 25° C
Contact resistance	IEC 512-2, 2a	max. 30 mOhm
Insulation resistance	IEC 512-2, 3a	min. 500 MOhm
Environmental properties		
Operation temperature		0 - 70° C

PART NO. ART.- NR.	TRANSMISSION CATEGORY	INSULATION BODY	SUITABLE ASSEMBLY PROCESS (LEADFREE)	SOLDER TEMPERATURE (MAX)
203513	CAT 5	PA6T/66 FR52 30%	reflow	260°C at 10s (acc. to IEC 60068-2-20)
133172	CAT 5	PBT 30%	wave	235°C at 3-5s
Information:		Tolerances x.xx ±0.25	Scale 2:1	
All rights reserved. Only for Information. To insure that this is the latest version of this drawing, please contact one of the ERNI companies before using.		Subject to modification without prior notice. Drawing will not be updated.	Designation MOD JACK - MJR 8P8C, 1X1	
D		13.08.2009	www.ERNI.com	
Index		Date	133943	
			1 (1/1) A3	
			Class MJ	

Copyright by ERNI GmbH
Proprietary notice pursuant to ISO 9016 to be observed.