

PLEASE CHECK WWW.MOLEX.COM FOR LATEST PART INFORMATION

Part Number: [0039000302](#)
Status: **Active**
Overview: [standard_093](#)
Description: 2.36mm (.093") Diameter, Standard .093" Pin and Socket Crimp Terminal, Series 1380, Male, with Tin (Sn) over Copper Plated Brass Contact, 18-24 AWG, Bag

Documents:

[Drawing \(PDF\)](#) [Product Specification PS-1380-003 \(PDF\)](#)
[Product Specification PS-1380-002 \(PDF\)](#) [RoHS Certificate of Compliance \(PDF\)](#)

General

Product Family Crimp Terminals
 Series [1380](#)
 Crimp Quality Equipment Yes
 Overview [standard_093](#)
 Product Name Standard .093"

Physical

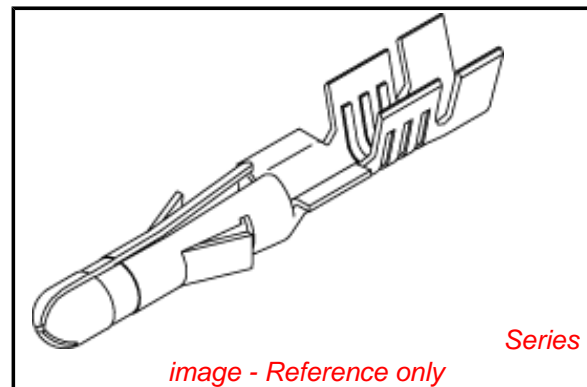
Durability (mating cycles max) 25
 Gender Male
 Material - Metal Brass
 Material - Plating Mating Tin
 Material - Plating Termination Tin
 Packaging Type Bag
 Plating min: Mating (µin) 35
 Plating min: Mating (µm) 0.88
 Plating min: Termination (µin) 35
 Plating min: Termination (µm) 0.88
 Termination Interface: Style Crimp or Compression
 Wire Insulation Diameter 1.50-3.10mm (.059-.122")
 Wire Size AWG 18, 20, 22, 24
 Wire Size mm² N/A

Material Info

Old Part Number 1380TL

Reference - Drawing Numbers

Product Specification PS-1380-002, PS-1380-003, RPS-1380-002
 Sales Drawing SD-1380*



EU RoHS

ELV and RoHS Compliant
REACH SVHC Contains SVHC: No
Halogen-Free Status

China RoHS



Need more information on product environmental compliance?

Email productcompliance@molex.com
 For a multiple part number RoHS Certificate of Compliance, [click here](#)

Please visit the [Contact Us](#) section for any non-product compliance questions.

Search Parts in this Series

1380Series

Application Tooling | [FAQ](#)

Tooling specifications and manuals are found by selecting the products below. Crimp Height Specifications are then contained in the Application Tooling Specification document.

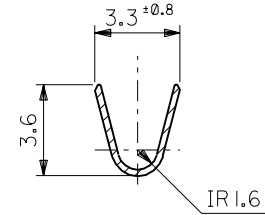
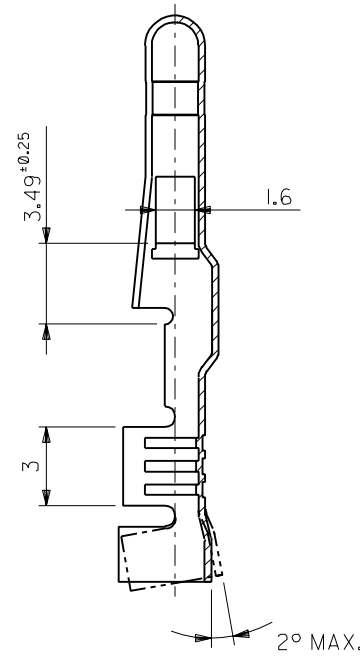
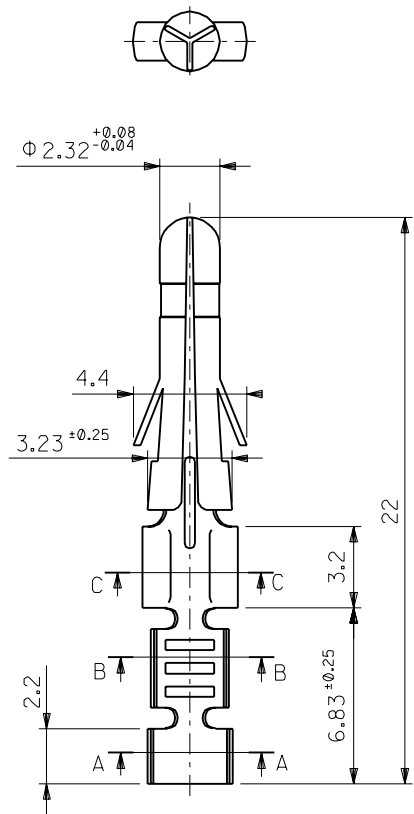
Global

Description	Product #
Hand Crimp Tool	0638191200
Extraction Tool	0011030006

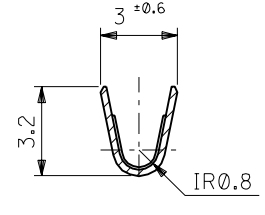
Japan

Description	Product #
Hand Crimp Tool	0011260006
JHTR1031C	

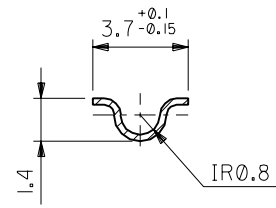
DWG. NO. SD-1380*



SECT. A-A



SECT. B-B



SECT. C-C

ニッケル (2 μm MIN.) 下地 金 (0.35 μm MIN.) OVER	39-00-0306	I380GL	バラ端子 LOOSE
GOLD (0.35 μm MIN.) OVER NICKEL (2 μm MIN.)	39-00-0305	I380G	連鎖状端子 CHAIN
銅 (3 μm MIN.) 下地 錫 (0.5 μm MIN.)	39-00-0304	I380T2L	バラ端子 LOOSE
TIN (0.5 μm MIN.) OVER COPPER (3 μm MIN.)	39-00-0303	I380T2	連鎖状端子 CHAIN
銅 (0.5 μm MIN.) 下地 錫 (0.9 μm MIN.)	39-00-0302	I380TL	バラ端子 LOOSE
TIN (0.9 μm MIN.) OVER COPPER (0.5 μm MIN.)	39-00-0283	I380T	連鎖状端子 CHAIN
メッキ PLATING	EDP.NO.	ENG.NO.	形状 FORM

注記 NOTES:
1. 一般公差 : ±0.4
GENERAL TOLERANCES : ±0.4

材料 MATERIAL		黄銅 BRASS 0.264 t		MOLEX-JAPAN CO.,LTD. 日本モレックス株式会社	
仕上げ FINISH		—		REVISE ONLY ON CAD SYSTEM	
適用電線範囲 WIRE RANGE		AWG#18-#24		TITLE 名称	
被覆外径 INS. RANGE		Φ1.5 ~ 3.1		.093 DIA. MALE TERM.	
DRAWN BY '93/06/18 H.HASEGAWA		CHK'D BY '93/06/18 H.HIRAMOTO		DWG. NO.	
APP'D BY '93/06/18 M.FUKUSHIMA		尺 度 SCALE 5 : 1		REV	
一般公差 GENERAL TOLERANCES		記号 LTR		H	
REVISION RECORD		変更内容 (J30539)		DR. H.H. 日付 '93/06/18	
DR. H.H. 日付 '93/06/18		M.FUKUSHIMA		SD-1380*	