

June 2006 - This drawing became the property of Winchester Electronics Corporation, Wallingford, CT.

1 Terminal Power ——— Copper-Nickel-Pure Tin, CA72500
Finish: See Chart for Plating

NOTES:

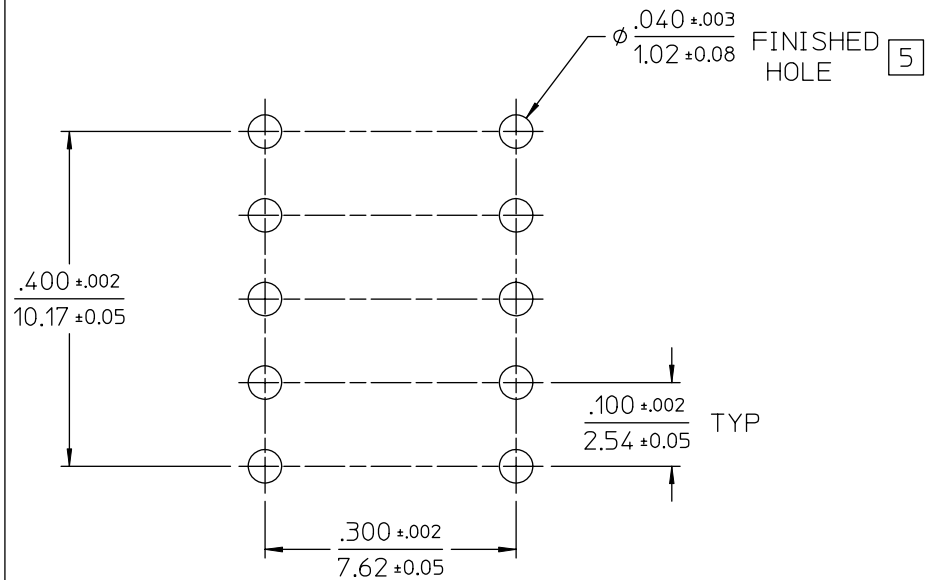
1. DIMENSIONS IN MILLIMETERS ARE FOR REF. ONLY.

2. THREAD TO WITHSTAND 8 IN.-LBS. MIN. TORQUE WITHOUT DAMAGE.

3. NO PLATING ON EDGES SHOWN.

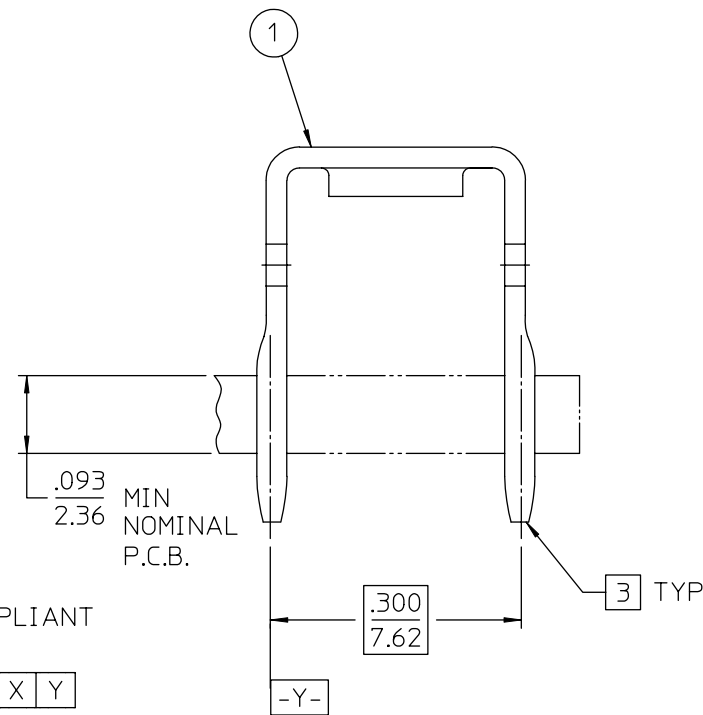
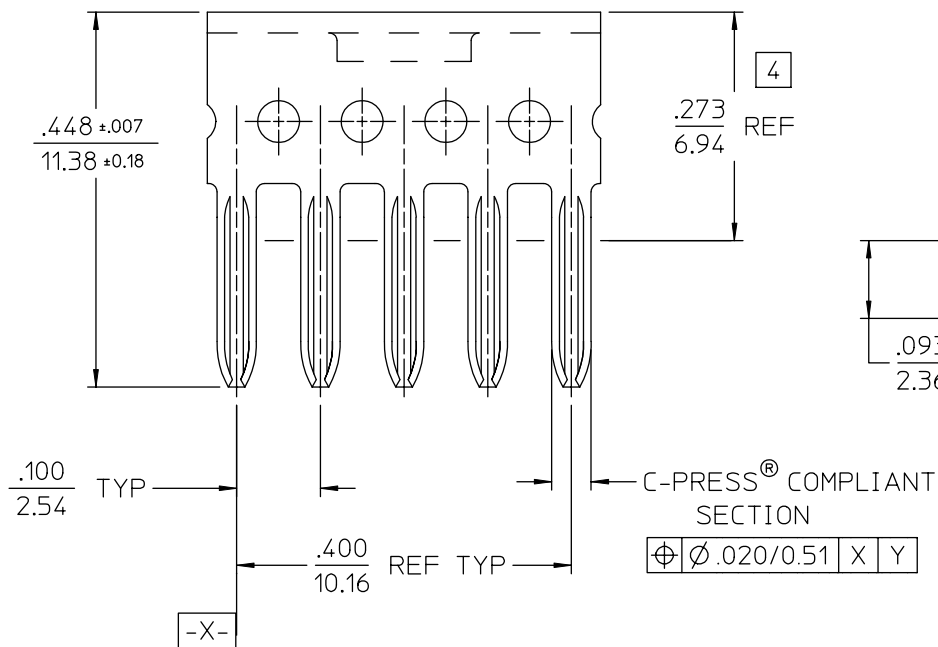
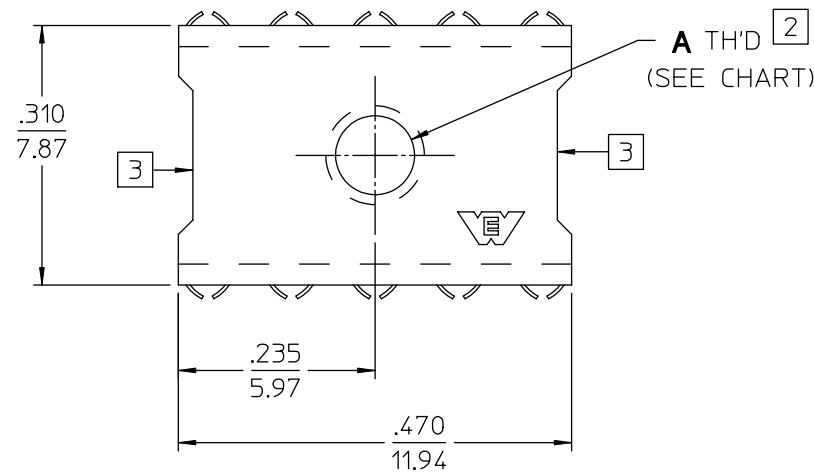
4. SEATING HEIGHT TO P.C. BOARD SURFACE.

5. PLATED THROUGH HOLE REQUIREMENTS PER DRAWING No. 27331.

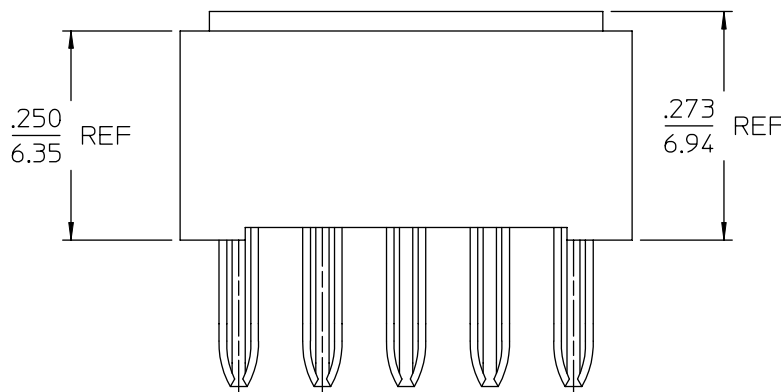


P.C. BOARD
HOLE PATTERN
SCALE 6:1

121-14202-01-260	M4	NO	PURE TIN (RoHS)
121-14202-00-260	M3	NO	
121-27394-01-260	M4	YES	
121-27394-00-260	M3	YES	
121-27394-1	M4	YES	TIN LEAD
121-27394	M3	YES	
121-14202-1	M4	NO	
121-14202	M3	NO	
CATALOG No.	A TH'D.	INSULATOR	PLATING 3



CAT. No. 121-14202 SHOWN



CAT. No. 121-27394-* SHOWN

121 SERIES

PER ANSI Y14.5M-1982 UNLESS OTHERWISE SPECIFIED: DIMENSIONS ARE IN INCHES OR INCHES/MM TOLERANCES: DECIMALS: .XX ± .02/0.5 .XXX ± .005/0.13 ANGLES: ± SCALE: 6:1				Litton Winchester Retconn 400 PARK ROAD WATERTOWN, CONNECTICUT 06795			
CUSTOMER DRAWING		DRAWN DATE J.M.G. 01/17/91		APPROVED DATE R.S. 01/23/91		TITLE POWER TERMINAL, 10-PIN, METRIC THREAD, .100 X .300 GRID WITH & WITHOUT INSULATOR	
APPROVED DATE L. BARONE 02/25/91		APPROVED DATE FRAN DANCE 02/26/91		C 14202		SHT. 1 OF 1	REV. F