

NOTES:

1. DELETED.
- 2 ALL TORQUE TESTING MUST BE PERFORMED WITH A .038 / 0.97 MINIMUM THICK SPACER BETWEEN THE SCREW HEAD AND TERMINAL BODY.
- 3 TORQUE REQUIREMENTS: THE THREADS OF BOTH THE POWER TERMINAL AND THE BRASS OR STEEL SCREW SUPPLIED WILL WITHSTAND 8 IN.-LBS. MINIMUM OF TIGHTENING TORQUE WITHOUT DAMAGE, WHEN A WASHER WITH A MINIMUM THICKNESS OF .038 / 0.97 (AS SUPPLIED) IS INSTALLED BETWEEN THE SCREW HEAD AND THE POWER TERMINAL BODY.
- 4 NO PLATING ON EDGES SHOWN.
- 5 SCREW AND WASHER TO BE SHIPPED UNASSEMBLED IN A SEPARATE POLY BAG.
- 6 C-Press® CONTACT PLATED THRU HOLE REQUIREMENTS PER DRAWING 27331.
7. WHEN NO WASHER / SPACER OR TERMINAL LUG IS INSTALLED, THE THREADS OF THE POWER TERMINAL WILL WITHSTAND A MAXIMUM TIGHTENING TORQUE OF 6 IN.-LBS.

SPECIFICATIONS

MATERIALS

Insulator ————— Nylon, UL 94V-0 Rated,
Color: Natural

Power Terminal ————— Copper-Nickel-Tin Alloy, CDA 72500
Finish: SEE CHART 4

3 5 Screw (Not Shown) ————— (SEE CHART)

3 5 Belleville Washer (Not Shown) — Spring Steel (.31 / 7.9 O.D. X .025 / 0.64 Thk.)

3 5 Plain Washer (Not Shown) ————— Brass, Cad Plated (.21 / 5.3 Min. O.D. X .038 / 0.97 Min. Thk.)

PERFORMANCE CHARACTERISTICS

Insulation resistance ————— 5000 megohms min.

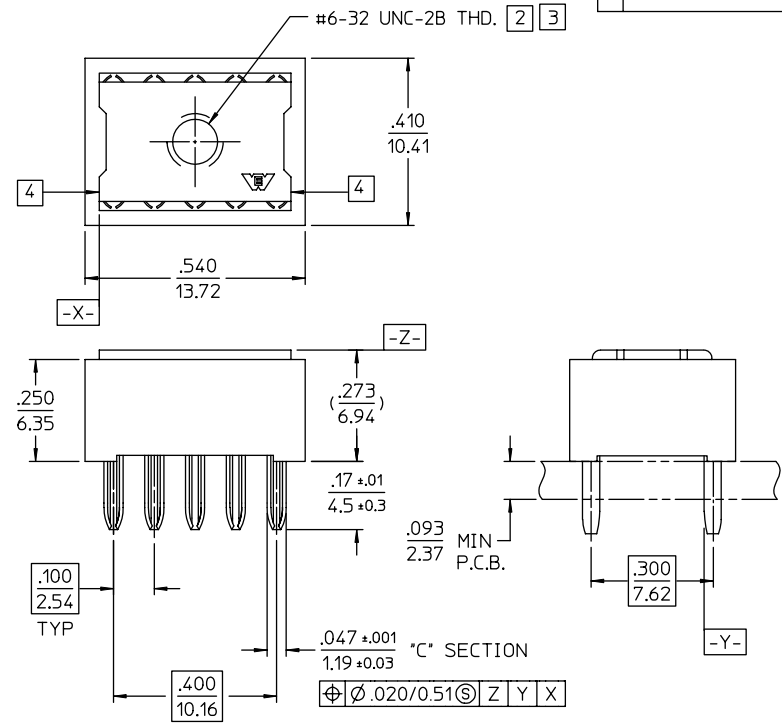
Current rating, 10 Pin ————— 36 amp. @ 30°C rise

Operating temperature range ————— -55°C to +105°C

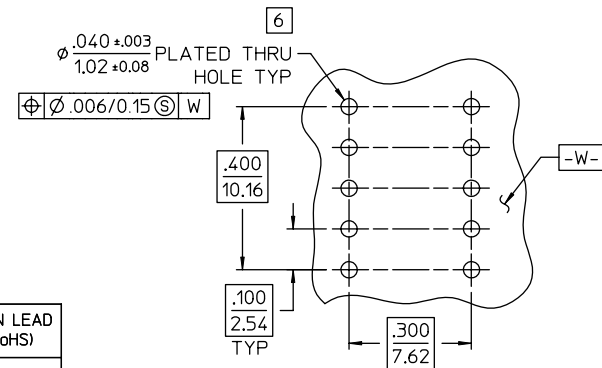
C-Press® Performance:

- Maximum insertion force, 10 Pin ————— 400 lbs. max.
- Minimum retention force, 10 Pin ————— 80 lbs. min.
- Number of repair cycles without hole deformation or performance loss ————— 3
- Contact to PTH electrical resistance — 2 milliohms max.

REV	DESCRIPTION	BY DATE	APPD
R	REVISED PER ECR-ER1962	CMB 11/30/06	CMB



121-14204-1 SHOWN 5



P.C. BOARD HOLE PATTERN 121 SERIES

CATALOG NO	DESCRIPTION	INSERTION TOOL	REMOVAL TOOL	IMPACT HANDLE	PLATING
121-14204-07	WITH #6-32 UNC-2A BRASS SCREW & NICKEL PLATED BRASS WASHER	107-42488 (DRACON)			TIN LEAD (RoHS)
121-14204-4	WITH #6-32 THREAD, T-15 TORX (R)1/4" HEX HEAD AND INTEGRAL WASHER. SOLDER PLATE.	107-42486 (PRESS)			TIN LEAD
121-14204-3	WITH #6-32 UNC-2A BRASS SCREW & BELLVILLE WASHER				PURE TIN (LEAD FREE RoHS)
121-14204-2	WITH #6-32 UNC-2A STEEL, NICKEL PLATED SCREW & PLAIN WASHER				TIN LEAD
121-14204-01-260	WITH #6-32 UNC-2A BRASS SCREW & CAD PLATED BRASS WASHER				PURE TIN (LEAD FREE RoHS)
121-14204-1		107-42488 (DRACON)			TIN LEAD
121-14204-00-260	WITHOUT SCREW				PURE TIN (LEAD FREE RoHS)
121-14204					TIN LEAD

UNLESS OTHERWISE SPECIFIED: DIMENSIONS ARE IN INCHES. .001 OR INCHES / MM		<p>62 Barnes Industrial Road North Wallingford, Connecticut 06492</p>
TOLERANCES	DECIMALS xx ±.02 / 0.5 xxx ±.005 / 0.13	
ANGLES ±		SCALE: 4:1
CUSTOMER DRAWING		TITLE
DRAWN: J.GATZURAS 08/20/83		POWER TERMINAL WITH INSULATOR .100 X .300 GRID - 10 PIN
DATE CHECKED: JAD 12/13/83		
APPROVED: JAD 12/14/83	DATE APPROVED:	
C	14204	SHT. 1 OF 1 REV. R

June 2006 - This drawing became the property of Winchester Electronics Corporation, Wallingford, CT.