

NOTES:

- 1

SCREW(S) AND WASHER(S) TO BE BAGGED SEPARATELY AND PLACED IN A BAG WITH POWER TERMINAL(S). SEAL BAG AND LABEL.
- 2

SCREW AND WASHER TO BE HAND TIGHT ASSEMBLED FOR -2 ONLY
- 3

ALL TORQUE TESTING MUST BE PERFORMED WITH A .038 / 0.97 MINIMUM THICK SPACER BETWEEN THE SCREW HEAD AND TERMINAL BODY.
- 4

TORQUE REQUIREMENTS. THE THREADS OF BOTH THE POWER TERMINAL AND THE BRASS SCREW SUPPLIED WILL WITHSTAND 8 IN.-LBS. MINIMUM OF TIGHTENING TORQUE WITHOUT DAMAGE, WHEN A WASHER WITH A MINIMUM THICKNESS OF .038 / 0.97 (AS SUPPLIED) IS INSTALLED BETWEEN THE SCREW HEAD AND THE POWER TERMINAL BODY.
- 5

NO PLATING ON EDGES SHOWN
- 6

C-Press® CONTACT PLATED THRU HOLE REQUIREMENTS PER DRAWING 27331.
- 7

WHEN NO WASHER / SPACER OR TERMINAL LUG IS INSTALLED, THE THREADS OF THE POWER TERMINAL WILL WITHSTAND A MAXIMUM TIGHTENING TORQUE OF 6 IN.-LBS.

SPECIFICATIONS

MATERIALS

Power Terminal ————— Copper-Nickel-Tin Alloy, CDA 72500
Finish. Solder Plate 60/40, 30min. to 70min.
except per note 4

1 2 3 Screw ————— Brass, Pan Head (SEE CHART)

1 3 Washer ————— Brass, Cad Plated
(.21 / 5.3 Min. O.D. X .038 / 0.97 Min. Thk.)

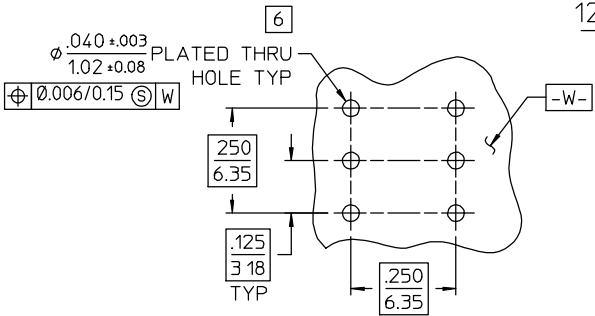
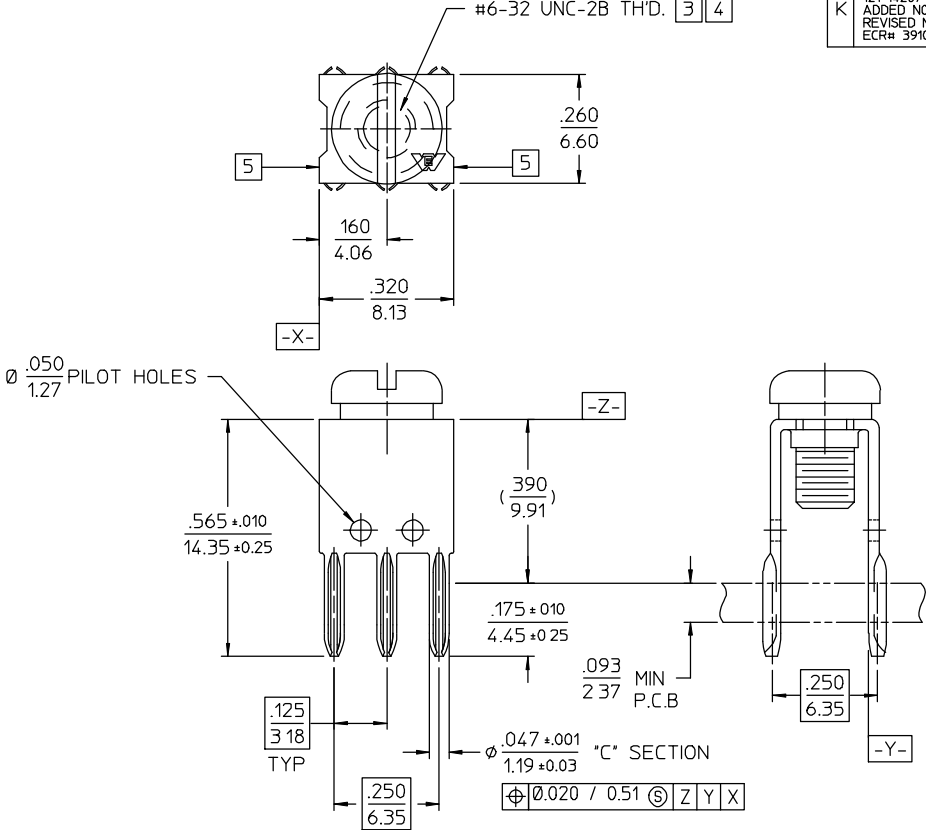
PERFORMANCE CHARACTERISTICS

Current rating, 6 Pin ————— 18 amp. @ 30°C rise

Operating temperature range ————— -55°C to +105°C

C-Press® Performance.

- Maximum insertion force, 6 Pin ————— 240 lbs. max.
- Minimum retention force, 6 Pin ————— 48 lbs min
- Number of repair cycles without hole deformation or performance loss ——— 3
- Contact to PTH electrical resistance — 2 milliohms max.



P.C. BOARD HOLE PATTERN

| | | | | |
|------------|-------------|---|----------------|--------------|
| 1 | 121-14207-3 | WITH #6-32 UNC-2A X 1/4 LONG SCREW & WASHER, CAD. PLATE | 107-42229 | 107-42503 |
| 2 | 121-14207-2 | WITH #6-32 UNC-2A X 1/4 LONG SCREW & WASHER ASSEMBLED | | |
| 1 | 121-14207-1 | WITH #6-32 UNC-2A X 1/4 LONG SCREW & WASHER | | |
| | 121-14207 | WITHOUT SCREW | | |
| CATALOG No | | DESCRIPTION | INSERTION TOOL | REMOVAL TOOL |

| | | |
|--|--|--|
| UNLESS OTHERWISE SPECIFIED, DIMENSIONS ARE IN INCHES. TOLERANCES DECIMALS ANGLES | | OR INCHES / MM XX ± .02 / 0.5 XXX ± .005 / 0.13 SCALE: 4:1 |
| CUSTOMER DRAWING | | Litton Winchester Electronics 400 PARK ROAD WATERTOWN, CONNECTICUT 06795 |
| DRAWN Danna DATE 03/19/85 APPROVED JAD DATE 03/22/85 | | DATE 03/20/85 DATE 03/20/85 TITLE POWER TERMINAL, C-PRESS® 6 PIN, #6-32 TH'D. .125 X .250 GRID 14207 SHT. 1 OF 1 REV. K |