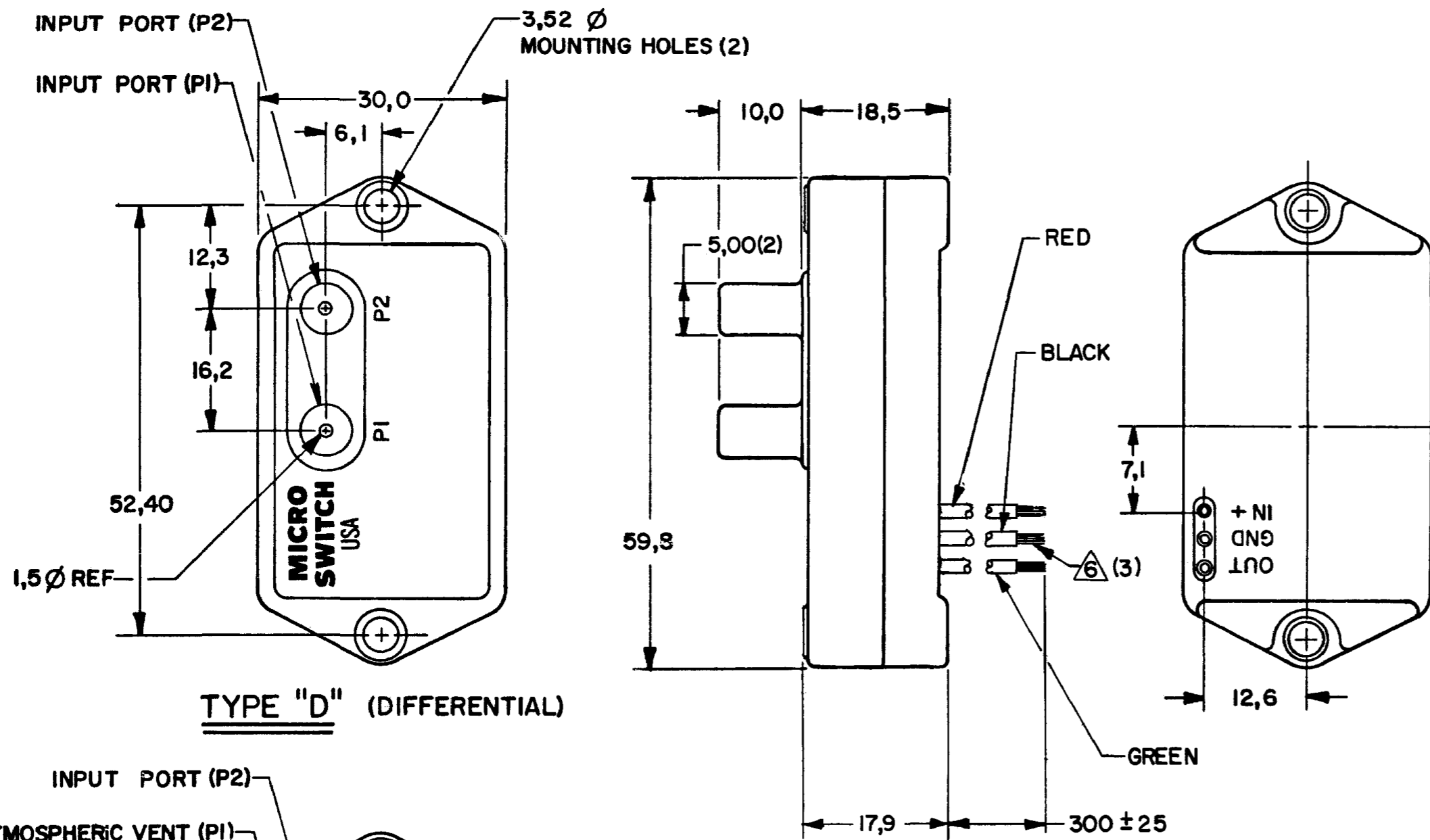


METRIC	INCH
1,5	.04
3,52	.139
5,00	.197
6,1	.240
7,1	.280
10,0	.39
12,3	.484
12,6	.496
16,2	.64
18,5	.73
30,0	1.18
52,40	2.063
59,8	2.35
300±25	11,8±1.0

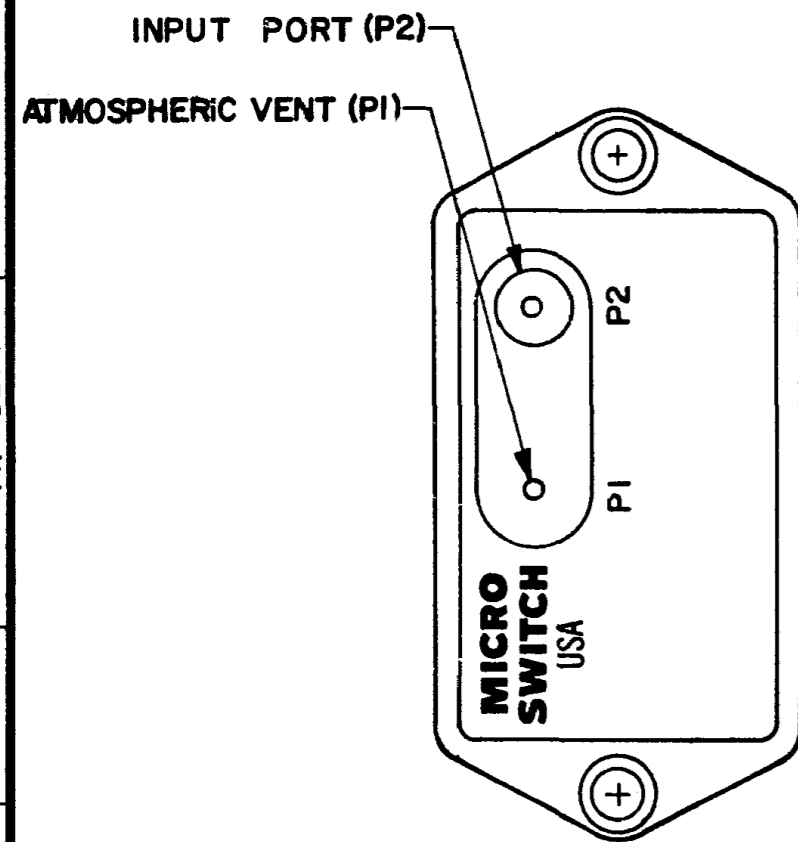
CATALOG LISTING	TYPE	OPERATING PRESSURE RANGE
(K)	D	0 TO -1.0 PSID
141PC01GW	G	0 TO -1.0 PSIG
142PC01DW	D	0 TO 1.0 PSID
142PC01GW	G	0 TO 1.0 PSIG



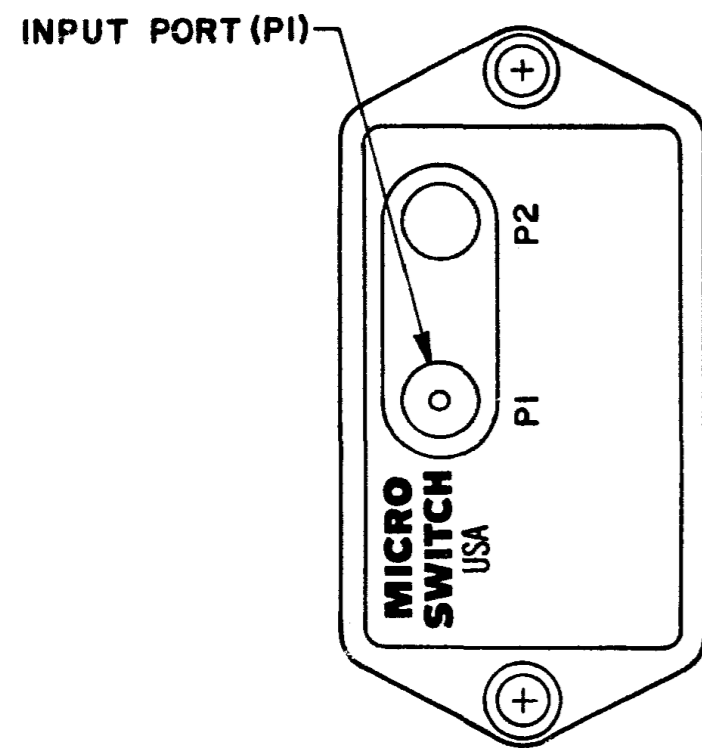
GENERAL OPERATING CHARACTERISTICS	
PRESSURE RANGE	0 TO 51.7 mmHg (0 TO 1 PSI)
OVERPRESSURE	1035 mmHg (20 PSI)
TEMPERATURE RANGES	STORAGE -55 TO +125°C OPERATE -40 TO +85°C COMPENSATED -18 TO +63°C
SUPPLY VOLTAGE	7 TO 16 VDC
SUPPLY CURRENT	20 mA MAX WITH 10K LOAD
SHORT CIRCUIT LIMIT	MAY BE SHORTED INDEFINITELY
OUTPUT RIPPLE	NONE
GROUND REFERENCE	SUPPLY AND OUTPUT ARE COMMON

ELECTRICAL PERFORMANCE AT 25°C AND 8.00 ± 0.01 VDC SUPPLY	
OUTPUT VOLTAGE	
141PC01DW OR GW	
NULL (0 PSIG)	1.00 ± 0.05 VDC
FULL SCALE (1.0 PSIG [51.7 mmHg])	6.00 ± 0.10 VDC (P2 < P1)
F.S.O. Δ	5.00 ± 0.05 VDC (P2 < P1)
142PC01DW OR GW	
NULL (0 PSIG)	1.00 ± 0.05 VDC
FULL SCALE (1.0 PSIG [51.7 mmHg])	6.00 ± 0.10 VDC (P2 > P1)
F.S.O. Δ	5.00 ± 0.05 VDC (P2 > P1)
SENSITIVITY	96.7 mV/mmHg (5.0 V/PSI)
LINEARITY (% F.S.O.) Δ 5 (BFSL)	± 0.75 MAX (P2 < P1) ± 1.50 MAX (P2 > P1)
HYSTERESIS & REPEATABILITY (% F.S.O.) Δ 5	± 0.3 TYPICAL
TEMPERATURE ERROR (% F.S.O.) Δ 5	± 1.5% MAX
5° < 25° > 45°C	
RESPONSE TIME	1 m SEC MAX TYP

TYPE "D" (DIFFERENTIAL)



TYPE "G" (GAGE)



TYPE "A" (ABSOLUTE)

NOTES

- INPUT MEDIA:
P1 - DRY GASES ONLY; CONNECTION SIDE OF SENSOR
P2 - LIMITED ONLY TO THOSE MEDIA THAT WILL NOT ATTACK POLYESTER, SILICON, OR SILICONE BASED ADHESIVE
- TERMINALS ARE PLATED FOR SOLDERING
- LIMIT SOLDERING TO 315°C MAX FOR 10 SECONDS MAX
- UNITS ARE OF PLASTIC CONSTRUCTION
- F.S.O. IS THE ALGEBRAIC DIFFERENCE BETWEEN THE OUTPUT END POINTS (NULL AND FULL PRESSURE)
- STRIPPED & TINNED LEAD ENDS TO BE 5.0 MAX

TOLERANCES			
APPLY TO DESIGN UNITS. CONVERSIONS ARE ONLY FOR REFERENCE. UNLESS NOTED, TOLERANCES ARE ±			
DIM.	TOL.	DIM.	TOL.
mm	mm/in	in	mm/in
NO PLACES	X	1/04	
ONE PLACE	X,X	0.47/016	X,X 0.87/03
TWO PLACES	X,XX	0.15/006	X,XX 0.38/015
THREE PLACES	X,XXX		X,XXX 0.13/005
ANGLES			

DESIGN UNITS	SI METRIC	US CUSTOMARY
<input checked="" type="checkbox"/>	<input type="checkbox"/>	<input type="checkbox"/>

RAW MATERIAL—COMMERCIAL STANDARD
MICRO SWITCH STANDARDS APPLY
DIMENSIONS ARE TO BE MET BEFORE PROTECTIVE COATINGS ARE APPLIED

TOLERANCES			
APPLY TO DESIGN UNITS. CONVERSIONS ARE ONLY FOR REFERENCE. UNLESS NOTED, TOLERANCES ARE ±			
DIM.	TOL.	DIM.	TOL.
mm	mm/in	in	mm/in
NO PLACES	X	1/04	
ONE PLACE	X,X	0.47/016	X,X 0.87/03
TWO PLACES	X,XX	0.15/006	X,XX 0.38/015
THREE PLACES	X,XXX		X,XXX 0.13/005
ANGLES			

THIS DRAWING COVERS A PROPRIETARY ITEM AND IS THE PROPERTY OF MICRO SWITCH, A DIVISION OF HONEYWELL. THIS DRAWING IS NOT TO BE COPIED OR USED WITHOUT THE APPROVAL OF MICRO SWITCH.

MICRO SWITCH FREEPORT ILLINOIS U.S.A. A DIVISION OF HONEYWELL FED. MFG. CODE 91929	PRESSURE TRANSDUCER	CATALOG LISTING 140PC01 SERIES CHART 2	WEIGHT 31 GRAMS
--	----------------------------	--	------------------------

CATALOG LISTING
M140PC01 SERIES CHART 2
PAGE 1 OF 1
ISSUE 12
REPLACES PR-8274
REVISIONS
A CO-50816 KAG 28 JAN 82
B CO-51435 DJS MS 82
C CO-53275 R J H 13 JUN 83
D CO-54442 C J H 13 JAN 84
E CO-54602 T R F 9 APR 84
F CO-54752 G J W 29 MAY 84
G PRI-3773 T S K 28 MAR 85
H CO-54986 T S K 21 MAY 86
J CO-62854 T L B 19 JAN 88
K 201727 S S L 1 MAR 01
L 0038813 AD 24 JAN 08
DRAWN G J W 128 NOV 75
CHECK DJW
RELEASE NO. PR-8274