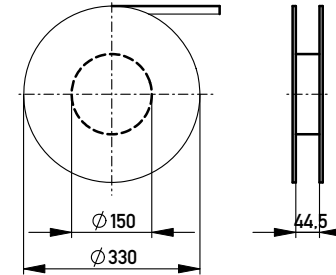
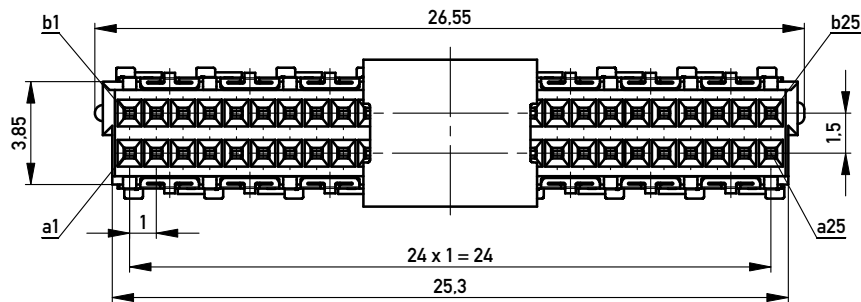
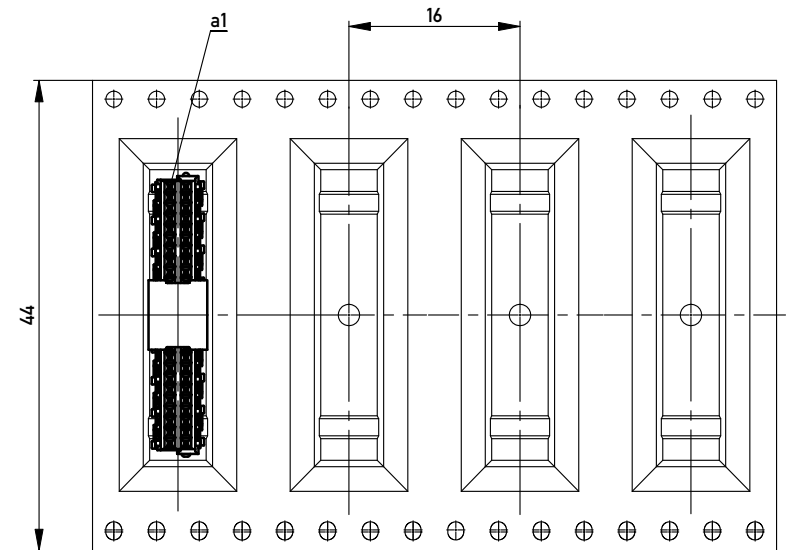


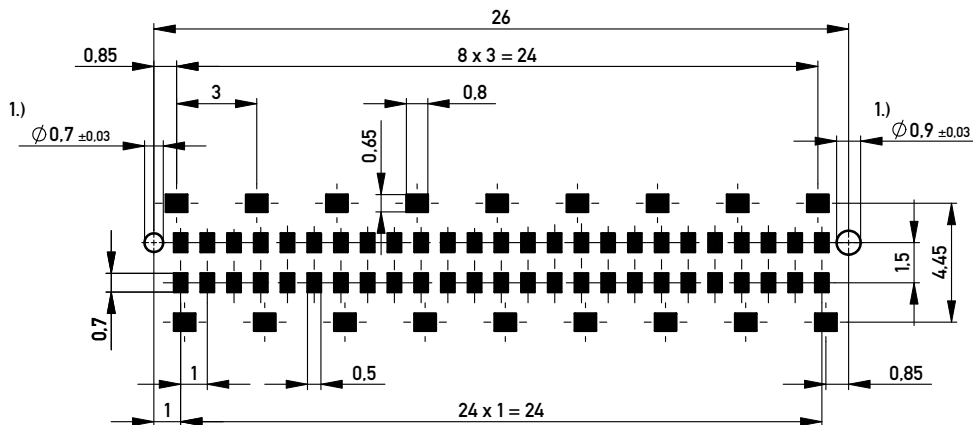
Verpackt in Gurtverpackung - Tape on Reel Packaging  
 Verpackungseinheit: 400 Stück - Packaging unit: 400 pcs



Abspulrichtung - Reel off Direction →



Leiterplatten-Layout Vorschlag / PCB-Layout Proposal



Anforderungsstufe 1  
 Performance Level 1

Kontaktbereich vergoldet  
 Mating Area gold plating

Anschlussbereich verzinkt 4-6µm  
 Terminal Area 4-6µm tin plating

Koplanarität der Anschlüsse ≤ 0,1mm  
 Coplanarity Area of Termination ≤ 0,1mm

1.) Durchmesser des Bohrers / Drill tool

Information:	Tolerances	 All Dimensions in mm	Scale	5:1
	All rights reserved. Only for Information. To ensure that this is the latest version of this drawing, please contact one of the ERNI companies before using.		Designation <b>Federleiste 4mm SMD, 50 polig</b> <b>Female 4mm SMD, 50 contacts</b>	
Subject to modification without prior notice. Drawing will not be updated.		 www.ERNI.com	<b>144662</b>	
h	21.09.2010		Class	MSPEED
Index	Date			A3

Copyright by ERNI GmbH. Proprietary notice pursuant to ISO 16106 to be observed.