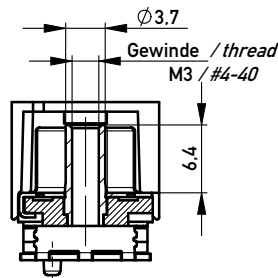
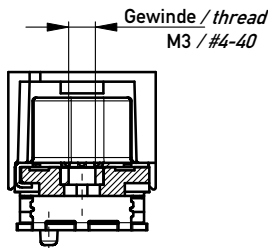
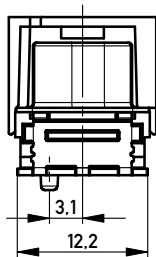


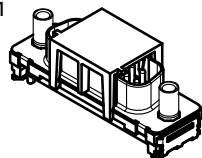
ohne / without

Mutter / nut

Bolzen / bolt



M 1:1

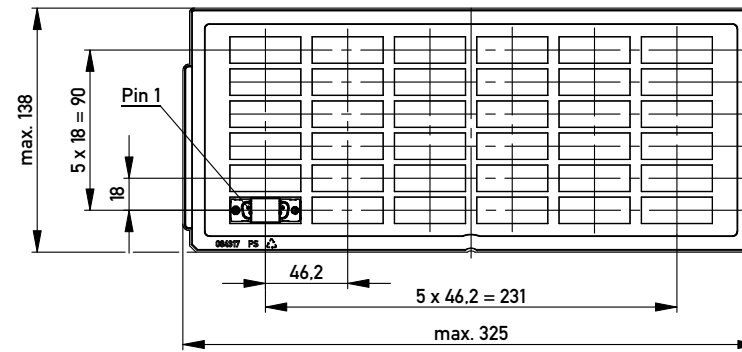


Anschlussbereich verzinkt
terminal area tin plating

Koplanarität der Anschlüsse ≤ 0.1 mm
coplanarity area of termination ≤ 0.1 mm

Anforderungsstufe: 2
class: 2

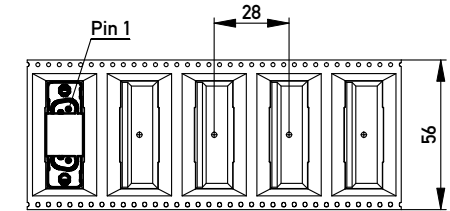
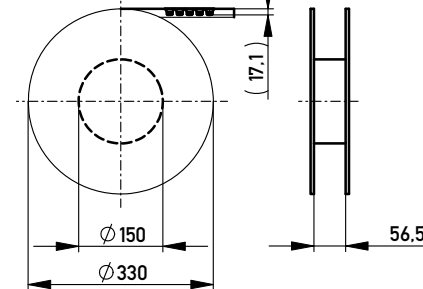
194255	174386	X			
194256	164014			#4-40	
194257	164010			M3	
194258	164005		#4-40		
194259	164002		M3		
Ident-Nr. part-no. tape & reel	Ident-Nr. part-no. tray	ohne without	Mutter thread	Bolzen bolt	Bemerkung remark



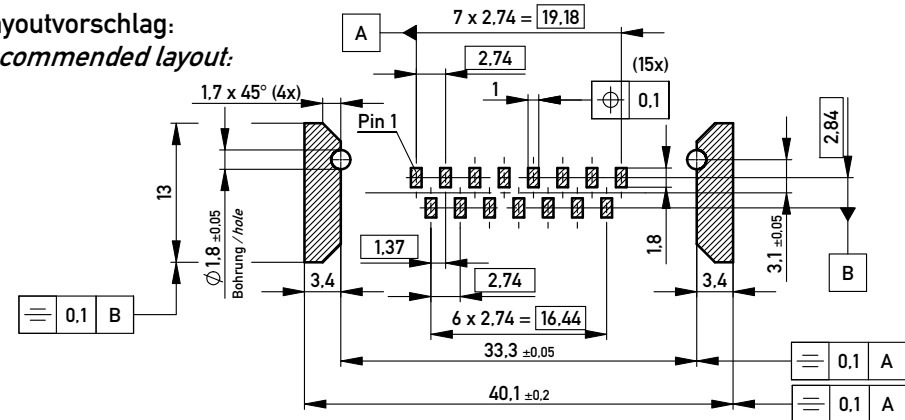
Verpackt in Tray
Verpackungseinheit 36 St.
tray packaging
packaging unit 36 pcs

Verpackt in Gurtverpackung - Tape on Reel Packaging
Verpackungseinheit: 120 Stück - Packaging unit: 120 pcs

Abspulrichtung - Reel off Direction



Layoutvorschlag:
recommended layout:



Fehlende Masse und Angaben siehe DIN 41652 / Missing information and dimensions according to DIN 41652
Sonstige Angaben siehe Fertigungsunterlagen / Additional indications please see the production documentation

Information:	Tolerances	Scale 2:1
All rights reserved. Only for Information. To ensure that this is the latest version of this drawing, please contact one of the ERNI companies before using.	 All Dimensions in mm	Designation
		TMC-P 15-SMD-6.3-BA8 TMC-P 15-SMD-6.3-type 8
www.ERNI.com	144890	1 A3
D 27.10.2009	Date	Class TMCP

Copyright by ERNI GmbH
Proprietary notice pursuant to ISO 16016 to be observed.