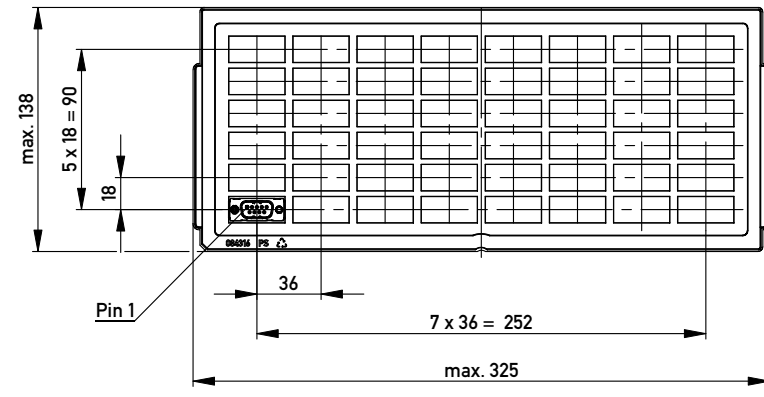
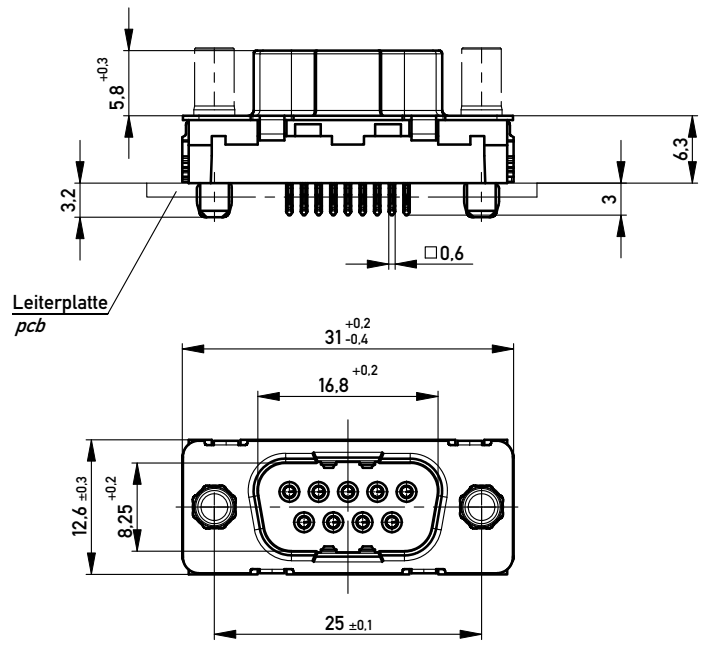


Verpackt in Tray  
Verpackungseinheit 48 St.  
tray packaging  
packaging unit 48 pcs

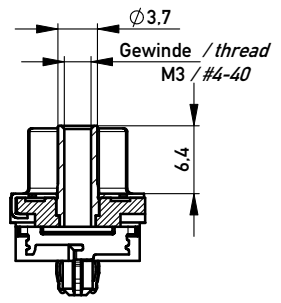
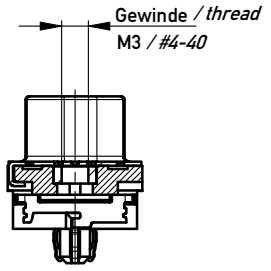
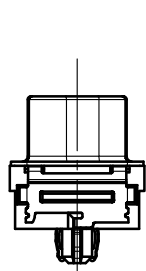


Sonstige Angaben siehe Zeichnung 204628 / Additional indications according to drawing 204628

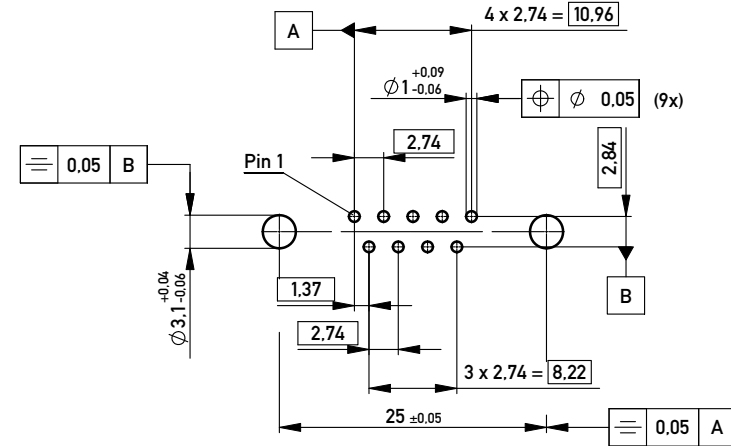
ohne / without

Mutter / nut  
max. Einschraubtiefe 3.7 mm  
thread depth max. 3.7 mm

Bolzen / bolt  
max. Einschraubtiefe 5.5 mm  
thread depth max. 5.5 mm



Layoutvorschlag:  
recommended layout:



Lochaufbau siehe ERNI-Spezifikation 164062 / hole design according to ERNI-specification 164062

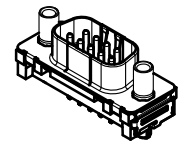
Fehlende Masse und Angaben siehe DIN 41652 / Missing information and dimensions according to DIN 41652  
Sonstige Angaben siehe Fertigungsunterlagen / Additional indications according to the production documentation

Beschriftung nach Bedruckungsvorschrift 174538  
Part marking according to specification 174538

194057	X			
194036			#4-40	
194056			M3	
194055		#4-40		
194054		M3		
Ident.-Nr. part-no.	ohne without	Mutter thread	Bolzen bolt	Bemerkung remark

Anschlussbereich verzinkt  
terminal area tin plating

Anforderungsstufe: 2  
class: 2



Copyright by ERNI GmbH  
Proprietary notice pursuant to ISO 16016 to be observed.

Information:	Tolerances	Scale 2:1
All rights reserved. Only for Information. To ensure that this is the latest version of this drawing, please contact one of the ERNI companies before using.	Subject to modification without prior notice. Drawing will not be updated.	Designation
		<b>TMC-P 09-EE-3.0-6.3-BA8</b> <b>TMC-P 09-EE-3.0-6.3-type 8</b>
www.ERNI.com	<b>144899</b>	I
A	02.03.2010	A3
Index	Date	Class TMCP