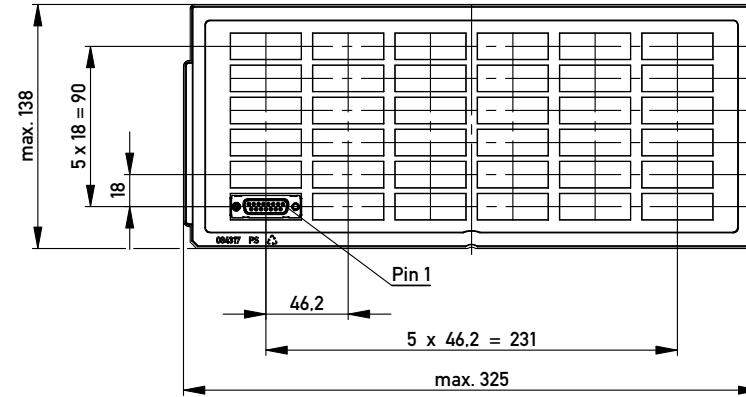
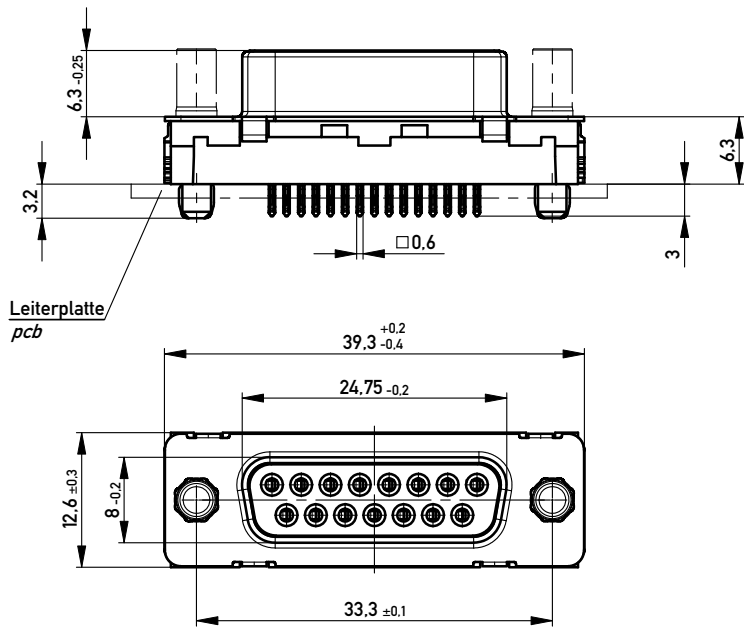
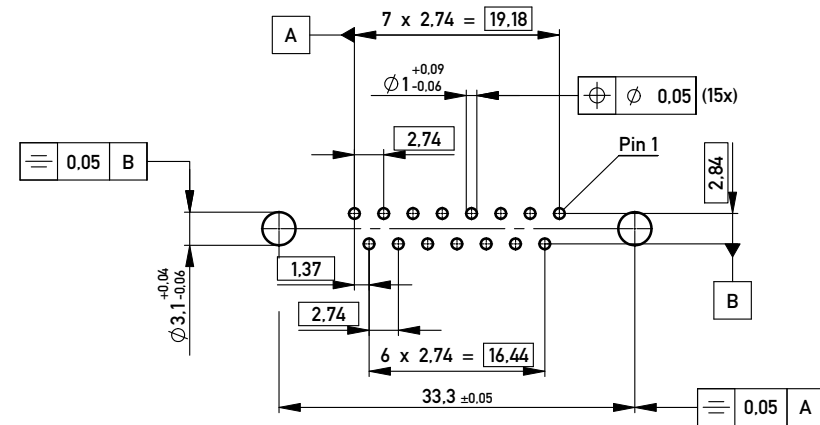


Verpackt in Tray
Verpackungseinheit 36 St.
tray packaging
packaging unit 36 pcs



Sonstige Angaben siehe Zeichnung 204628 / Additional indications according to drawing 204628

Layoutvorschlag:
recommended layout:



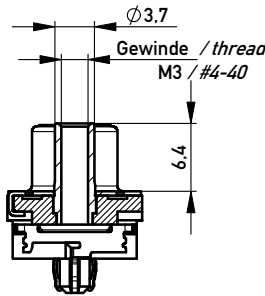
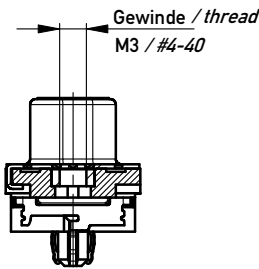
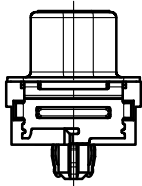
Lochaufbau siehe ERNI-Spezifikation 164062 / hole design according to ERNI-specification 164062

Fehlende Masse und Angaben siehe DIN 41652 / Missing information and dimensions according to DIN 41652
Sonstige Angaben siehe Fertigungsunterlagen / Additional indications according to the production documentation

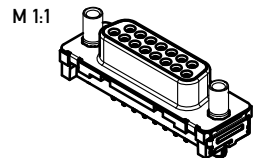
ohne / without

Mutter / nut
max. Einschraubtiefe 3.7 mm
thread depth max. 3.7 mm

Bolzen / bolt
max. Einschraubtiefe 5.5 mm
thread depth max. 5.5 mm



Beschriftung nach Bedruckungsvorschrift 174538
Part marking according to specification 174538



Anschlussbereich verzinnt
terminal area tin plating

Anforderungsstufe: 2
class: 2

194380	X				
194381			#4-40		
194382			M3		
194383		#4-40			
194384		M3			
Ident.-Nr. part-no.	ohne without	Mutter thread	Bolzen bolt	Bemerkung remark	

Copyright by ERNI GmbH
Proprietary notice pursuant to ISO 16106 to be observed.

Information:		Tolerances	Scale 2:1
All rights reserved. Only for Information. To ensure that this is the latest version of this drawing, please contact one of the ERNI companies before using.		All Dimensions in mm	Designation TMC-S 15-EE-3.0-6.3-BA8 TMC-S 15-EE-3.0-6.3-type 8
Subject to modification without prior notice. Drawing will not be updated.		All Dimensions in mm	
B	25.02.2010	Class TMCS	
Index	Date	I A3	