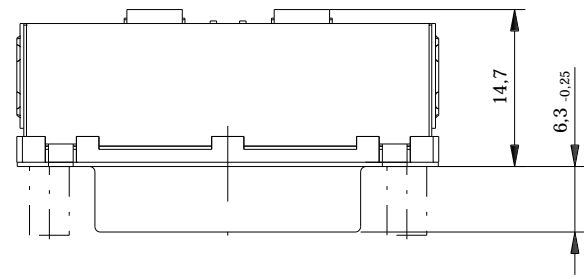
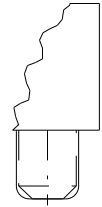
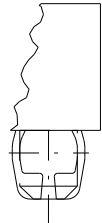


**Variante 1**  
version 1  
Bestückung kraftlos  
without assembly force



**Variante 2**  
version 2  
Bestückung mit Kraft  
with assembly force

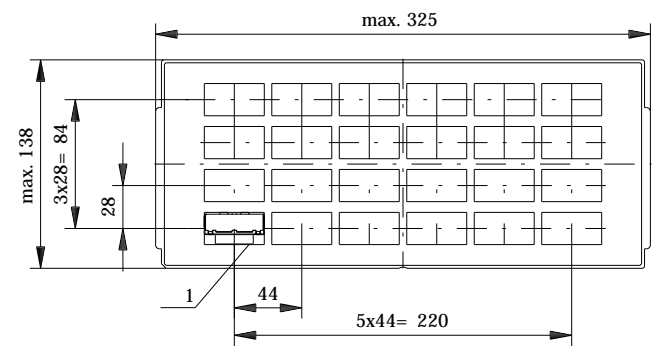
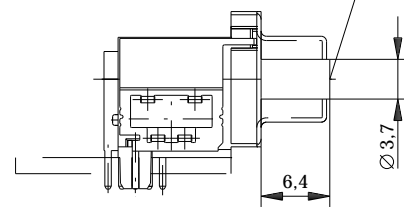
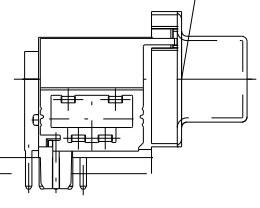
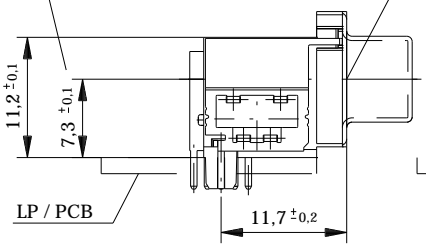


Einbauhöhe / mounting height

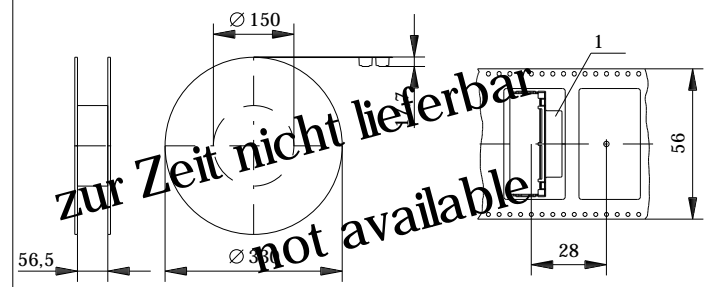
ohne / without  
Durchgangsloch ø3,2  
through hole ø 3,2

Mutter / nut  
Gewinde / thread  
M3 / #4-40

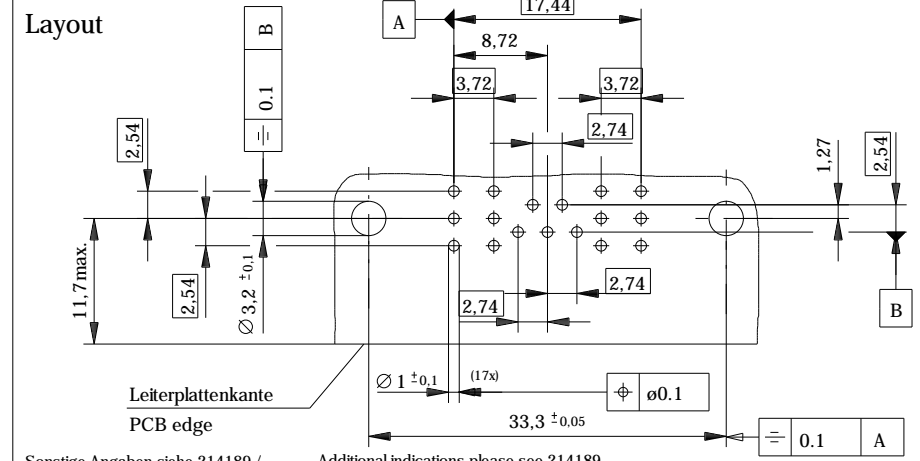
Bolzen / bolt  
Gewinde / thread  
M3 / #4-40



Verpackt in Tray  
Verpackungseinheit 24 St.  
tray packaging  
packaging unit 24 pcs



Verpackt in Gurt  
Verpackungseinheit 75 St.  
tape & reel packaging  
packaging unit 75 pcs  
Abspulrichtung  
reel off direction



Sonstige Angaben siehe 214189 / Additional indications please see 214189

Fehlende Masse und Angaben siehe DIN 41652/ und CECC 75301-802  
Missing information and dimensions according to DIN 41652 and CECC 75301-802  
Sonstige Angaben siehe Fertigungsunterlagen / Additional indications please see the production documentation

Anschlussbereich verzinkt  
terminal area tin plating

Anforderungsstufe: 2  
class: 2

		214184	ø3,2				
		214185			#4-40		
		214186			M 3		
		214187		#4-40			
		214188	M 3				
Ident-Nr part-no. tape & reel Variante 1 version 1	Ident-Nr part-no. tray Variante 1 version 1	Ident-Nr part-no. tray Variante 2 version 2	ohne without	Mutter thread	Bolzen bolt	Bemerkung comment	

Consider protection memo from DIN 54

Information:	Tolerances 	Scale 2:1
All rights reserved. Only for information. To insure that this is the latest version of this drawing, please contact one of the ERNI companies before using.	Subject to modification without prior notice. Drawing will not be updated.	Designation TMC S 7W2 THR/TL Standard TMC S 7W2 THR/TL Standard
	www.ERNI.com	144986
a Index	15.03.2006 Date	H:00056562.SZA TMC