

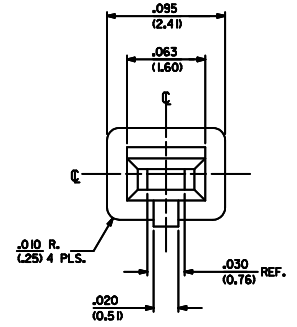
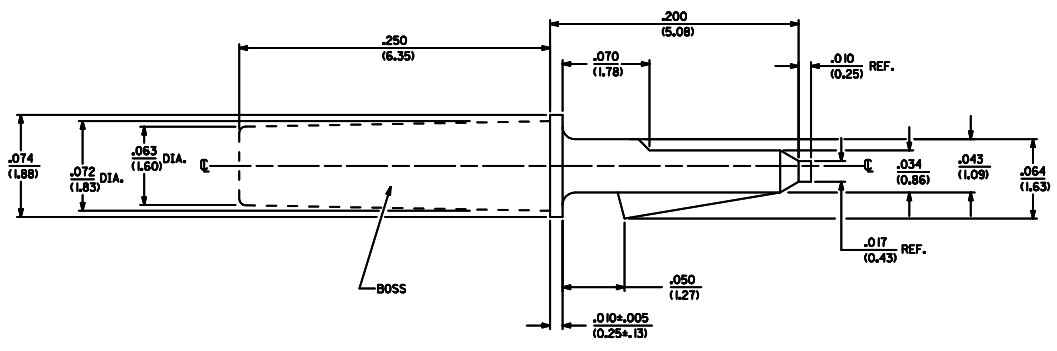
7580-A***		7580-B***	
89-00-3001	7580-A1L	NOT TOOLED	7580-B1B
89-00-3002	7580-A2L	I5-04-9224	7580-B1B-BU
NOT TOOLED	7580-A2A	I5-04-0288	7580-B1C
		I5-04-9222	7580-B1C-BU

7580-***

VERSION: _____ COLOR: _____
 BLANK=NATURAL
 BU=BLUE

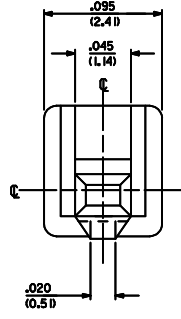
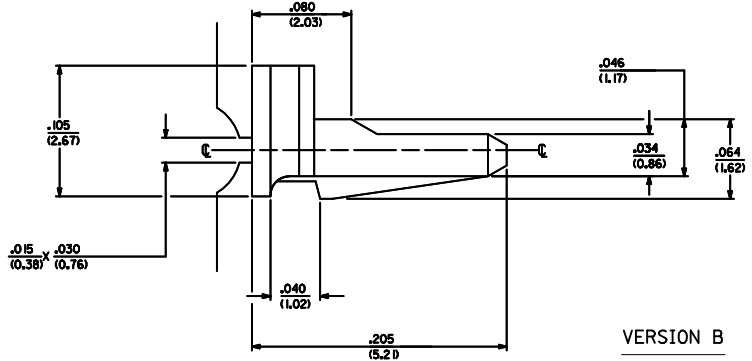
BOSS OPTIONS: _____ FORM OF SHIPMENT: _____
 1-WITHOUT BOSS A=RUNNER TYPE 1
 2-WITH BOSS B=RUNNER TYPE 2
 C=RUNNER TYPE 3
 L=LOOSE

NOTES:
 1. MATERIAL: NYLON, TYPE 6/6, UL94V-2. COLOR: SEE LEGEND
 2. FINISH: N/A
 3. THIS PART CONFORMS TO CLASS B REQUIREMENTS OF COSMETIC SPECIFICATION PS-45499-002.



VERSION A

USES RUNNER TYPE 1 ONLY AND AVAILABLE WITH OR WITHOUT BOSS (FITS CONNECTOR HOUSING 6442)



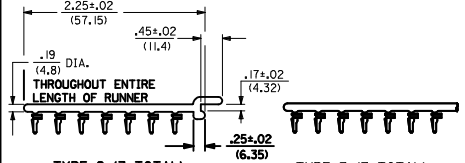
VERSION B

USES RUNNER TYPES 2 & 3 ONLY AND HAS NO BOSS (USED WITH CONNECTORS: 7793, 7935)

CHAIN FORM



TYPE 1 (10 TOTAL)



TYPE 2 (7 TOTAL)

TYPE 3 (7 TOTAL)

PARTS MUST BE ORIENTED ON RUNNER AS SHOWN ABOVE

REMOVE TYPE 4 EEC NO: UCP2012-3918 DRAWN BY: DRW:WIMSTROH 2012/06/01 CHECKED BY: CHY:CHKIPPER 2012/06/01 APPROVED BY: APP:RFS:SMITH 2012/06/07 REV: N1	QUALITY SYMBOLS	GENERAL TOLERANCES (UNLESS SPECIFIED)	DIMENSION STYLE	SCALE	DESIGN UNITS	THIRD ANGLE PROJECTION	
	∇=0 ∇=0 ∇=0	mm INCH 4 PLACES ±.010 3 PLACES ±.025 2 PLACES ±.050 1 PLACE ±.100 0 PLACE ±.150	IN/MM	20:1	INCH	POLARIZING KEY, PEG .156 SPACING FOR 6442, 7793, 7935	
	DRAFT WHERE APPLICABLE MUST REMAIN WITHIN DIMENSIONS	ANGULAR ±1/2°	MATERIAL NO.	DATE	DATE	DATE	molex SD-7580-*
			SEE CHART				SHEET NO. 1 OF 1