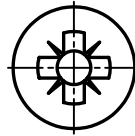
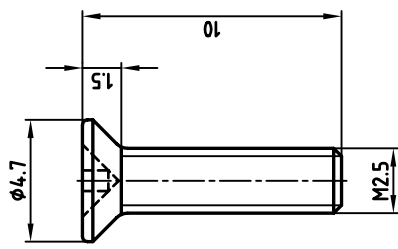
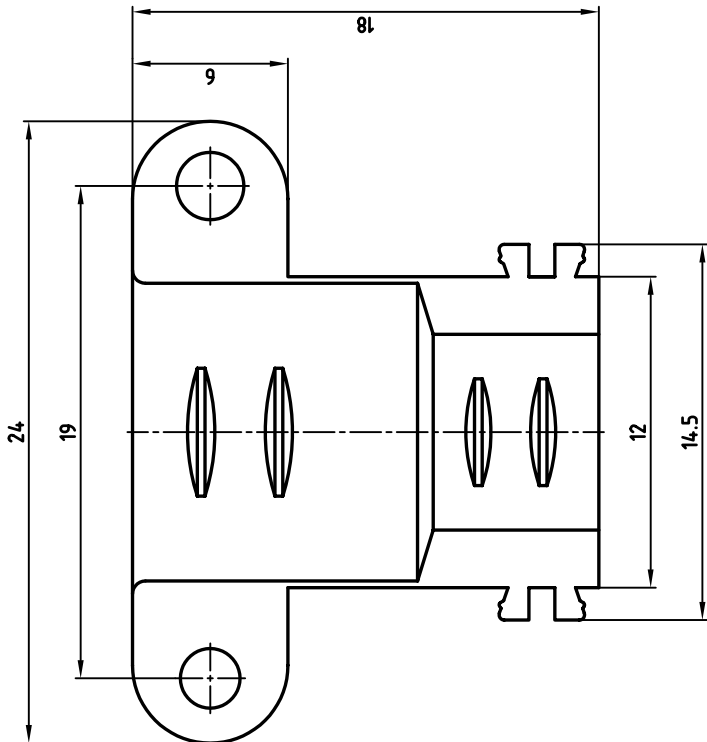


used for: D-SUB HOOD



Directive 2002/95/EC
RoHS
Compliant

1 SET CONSISTS OF:
2 CABLE CLAMPS
2 SCREWS

tolerance		scale: 5:1	
2001	date	material: CABLE CLAMP: DIE-CAST ZINC	
drawn	25.04.	title: CABLE CLAMP SET	
appd.	25.04.	FOR HOOD 9-37pos.	
norm		dwg no: AutoCAD 2000 DIN-A	
e-old		16K1A183A 3	
		sh: 1/1	
		part no: 160X11189X	

THIS DRAWING MAY NOT BE COPIED OR REPRODUCED IN ANY WAY, AND MAY NOT BE PASSED ON TO A THIRD PARTY WITHOUT WRITTEN PERMISSION.
OWNERSHIP AND COPYRIGHT OF CONEC GMBH
DO NOT ALTER CAD DRAWING BY HAND

