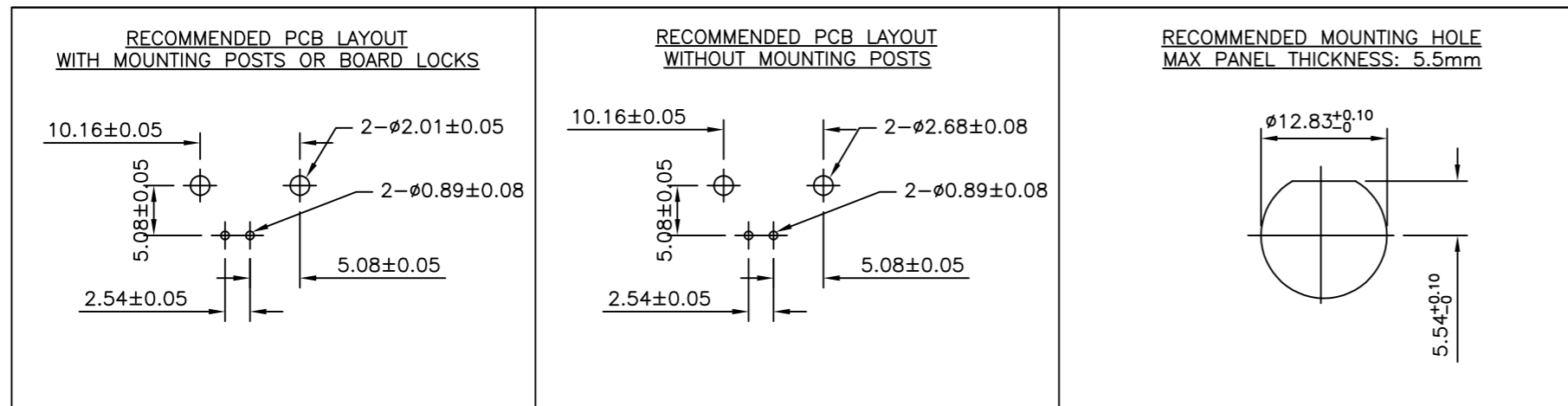
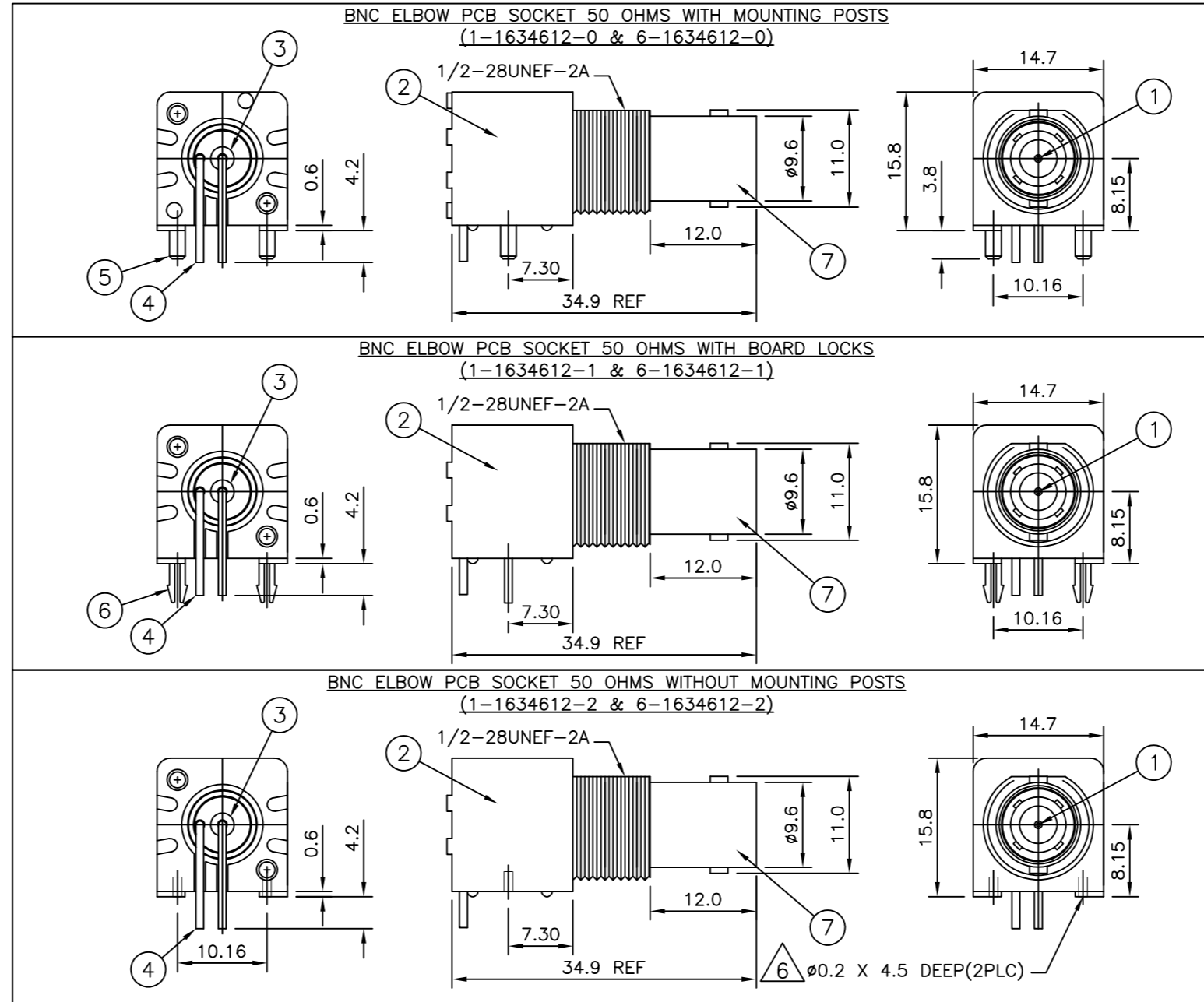


THIS DRAWING IS UNPUBLISHED. RELEASED FOR PUBLICATION AUGUST, 2005.
 © COPYRIGHT 2005 By - ALL RIGHTS RESERVED.

| LOC | DIST | REVISIONS | | | | | |
|-----|------|-----------|-----|---------------------------|-----------|-------|--------|
| | | P | LTR | DESCRIPTION | DATE | DWN | APVD |
| E | B | | C1 | REVISED PER ECO-11-005033 | 31MAR11 | RK | HMR |
| | | | D | ECO-12-014680 | 20Aug2012 | TITAN | MARTIN |
| | | | E | ECO-12-018113 | 27DEC2012 | TITAN | MARTIN |

NOTES:

- 1. SINGLE PACK IN ACCORDANCE WITH AMP SPEC 107-3275
- 2. 50 TRAY PACK IN ACCORDANCE WITH AMP SPEC 107-3275
- 3. Au PLATING OVER Ni PLATING OVER Cu PLATING
- 4. Ni PLATING OVER Cu PLATING
- 5. TIN PLATING
- 6. RECOMMENDED SELF-TAPPING SCREW 221108-4
- 7. RECOMMENDED MOUNT NUT 1-1634816-0
- 8. RECOMMENDED LOCKWASHER 1-1634817-0
- 9. FOR TECHNICAL DATA REFER TO YOUR LOCAL TE CONNECTIVITY SALES OFFICE
- 10. ALL DIMENSIONS ARE NOMINAL FOR REFERENCE ONLY UNLESS OTHERWISE STATED



| Obsolete | Obsolete | Obsolete | Obsolete | Obsolete | Quantity | Material | Description | Item |
|----------|----------|----------|----------|----------|----------|--------------|---------------|------|
| 1 | 1 | 1 | 1 | 1 | 1 | ZINC DIECAST | BOARD LOCK | 7 |
| - | - | 2 | 2 | - | - | BRASS | MOUNTING POST | 6 |
| - | - | - | - | 2 | 2 | BRASS | SOLDER TAIL | 5 |
| 1 | 1 | 1 | 1 | 1 | 1 | BRASS | INSULATOR | 4 |
| 1 | 1 | 1 | 1 | 1 | 1 | PE-606 | HOUSING | 3 |
| 1 | 1 | 1 | 1 | 1 | 1 | PBT BLACK | CONTACT | 2 |
| 1 | 1 | 1 | 1 | 1 | 1 | BRASS | HOUSING | 1 |
| 6--2 | 1--2 | 6--1 | 1--1 | 6--0 | 1--0 | MATERIAL | DESCRIPTION | ITEM |

THIS DRAWING IS A CONTROLLED DOCUMENT.

DWN: RITA ZUO 14 Feb 09
 CHK: ANSON MA 14 Feb 09
 APVD: BOB ZHAO 14 Feb 09

TE Connectivity

BNC HIGH PROFILE R/A INSULATED PCB SOCKET 50 OHM BLACK

108-112000

SCALE: NTS SHEET: 1 of 1 REV: E