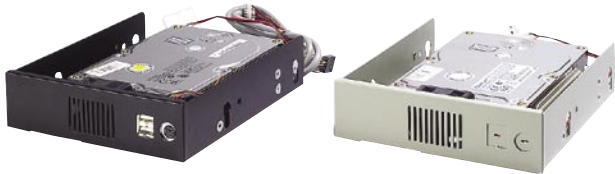


# Accessories

## 5.25 Industrial Disk Tray

### IDT-5101

Shockproof Industrial Hard Disk Drive Tray with Cooling Fan and Optional Front USB and PS/2 Interfaces



- Accepted HDD: 1 x 3.5"
- Cooling Fan: 1 x 7 CFM
- Material: Heavy duty steel plate with coating
- Color Codes: 414U (Gray), 4C2X (Black)
- Dimensions (W x H x D): 148.5 x 42.6 x 171 mm (5.85" x 1.68" x 6.73")
- Net Weight: 400 g (0.88 lb)
- P/N: IDT-5101, IDT-5101-BLK  
IDT-5121, IDT-5121-BLK with dual USB & PS/2

## Connectors and Cables



### P/N 170000719

USB cable with four ports, 30.5 cm

- The key is in pin #10

### P/N 1700002314

USB cable with four ports, 30.5cm

- For AIMB-764, 762, 760, 750, 744, 742, 562, 560, 556, 554, 542, PCA-6189, PCE-5120, PCE-7210
- The key is in pin #9



### P/N 1700100170

USB cable with dual ports, 17.5 cm

- The key is in pin #10

### P/N 1700003195

USB cable with dual ports, 17.5 cm

- For AIMB-764, 762, 760, 750, 744, 742, 562, 560, 556, 554, 542, PCA-6189, PCE-5120, PCE-7210
- The key is in pin #9



### P/N 1700100301

USB cable with dual ports, 30 cm

- The key is in pin #10

### P/N 1700002204

USB cable with dual ports, 27cm

- For AIMB-764, 762, 760, 750, 744, 742, 562, 560, 556, 554, 542, PCA-6189, PCE-5120, PCE-7210
- The key is in pin #9



### P/N 1700060202

Y-cable for PS/2 mouse & keyboard for CPU card



### P/N 1700060201

Y-cable for PS/2 mouse & AT keyboard for CPU card



### P/N 1700000259

15-pin to 9-pin D-sub VGA cable, 20 cm



### P/N 1701260305

Serial and parallel ports with cables and bracket