

PLEASE CHECK WWW.MOLEX.COM FOR LATEST PART INFORMATION

Part Number: [1705401026](#)
Status: **Active**
Overview: [Impact™ Backplane Connector and Cable Assembly System](#)
Description: [Impact™ 85 Ohm Plus 6 Pair Right Angle Daughtercard, Unguided, 16 Columns, 288 Circuits, Plated Through Hole Dimension 0.39mm, Lead Free](#)

Documents:

3D Model	Application Specification AS-76060-990-001 (PDF)
Drawing (PDF)	Packaging Specification PK-70873-589 (PDF)
Product Specification PS-170540-999-001 (PDF)	RoHS Certificate of Compliance (PDF)

Agency Certification

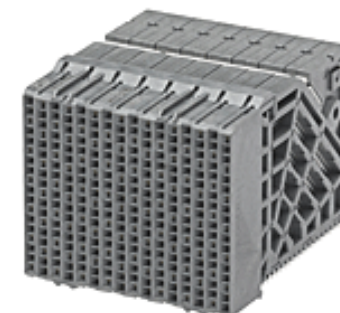
UL E29179

General

Product Family	Backplane Connectors
Series	170540
Application	Conventional, Daughtercard
Application Tooling Documents	TM-622018799
Component Type	PCB Receptacle
Overview	Impact™ Backplane Connector and Cable Assembly System
Product Name	Impact™
UPC	884982613508

Physical

Circuits (Loaded)	288
Circuits (maximum)	288
Color - Resin	Gray
Durability (mating cycles max)	200
First Mate / Last Break	No
Flammability	94V-0
Guide to Mating Part	No
Keying to Mating Part	None
Material - Metal	High Performance Alloy (HPA)
Material - Plating Mating	Gold
Material - Plating Termination	Tin
Material - Resin	High Temperature Thermoplastic
Net Weight	38.457/g
Number of Columns	16
Number of Pairs	6
Number of Rows	18
Orientation	Right Angle
PC Tail Length	1.20mm
PCB Locator	No
PCB Retention	None
PCB Thickness - Recommended	1.00mm
Packaging Type	Tray
Pitch - Mating Interface	1.35mm, 1.90mm
Pitch - Termination Interface	1.35mm, 1.90mm
Plating min - Mating	0.762µm
Polarized to PCB	No
Stackable	No
Surface Mount Compatible (SMC)	No
Temperature Range - Operating	-55°C to +85°C
Termination Interface: Style	Through Hole - Compliant Pin



Series image - Reference only

EU ELV

Not Relevant

EU RoHS

Compliant

REACH SVHC

Not Contained Per - ED/21/2016 (20 June 2016)

Halogen-Free

Status

Low-Halogen

Need more information on product environmental compliance?

Email productcompliance@molex.com
Please visit the [Contact Us](#) section for any non-product compliance questions.

China ROHS

ELV

RoHS Phthalates

Green Image

Not Relevant

Not Contained

Search Parts in this Series

[170540 Series](#)

Mates With

[170535 Impact™ 85 Ohm Plus Vertical Header](#)

Electrical

Current - Maximum per Contact	0.75A
Data Rate	25.0 Gbps
Impedance	85Ω
Shield Type	N/A
Shielded	No
Voltage - Maximum	30V AC (RMS)/DC

Solder Process Data

Lead-free Process Capability	N/A
------------------------------	-----

Material Info**Reference - Drawing Numbers**

Application Specification	AS-76060-990-001
Electrical Model Document	EE-170540-001, EE-170540-001_25G
Packaging Specification	PK-70873-589
Product Specification	PS-170540-999-001
S-Parameter Model	SP-170540-0001_25G, SP-170540-0001_40G20
Sales Drawing	SD-170540-0001, SD-173120-0001
Symbol/Footprint Data	SYM-170540-1026

This document was generated on 12/08/2016

PLEASE CHECK WWW.MOLEX.COM FOR LATEST PART INFORMATION