

Plug-In Frequency Mixer

SRA-1WH+

Level 17 (LO Power +17 dBm) 1 to 750 MHz



Generic photo used for illustration purposes only

CASE STYLE: A01

+RoHS Compliant
The +Suffix identifies RoHS Compliance. See our web site for RoHS Compliance methodologies and qualifications

Maximum Ratings

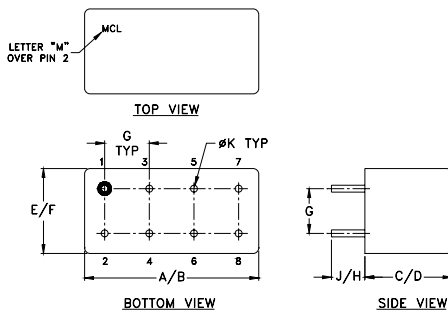
Operating Temperature	-55°C to 100°C
Storage Temperature	-55°C to 100°C
RF Power	200mW
IF Current	40mA
Permanent damage may occur if any of these limits are exceeded.	

Pin Connections

LO	8
RF	1
IF	3,4 [^]
GROUND	2,5,6,7
CASE GROUND	2,5,6,7

[^] pins must be connected together externally

Outline Drawing



Outline Dimensions (inch/mm)

A	B	C	D	E	F
.770	.800	.385	.400	.370	.400
19.56	20.32	9.78	10.16	9.40	10.16
G	H	J	K	wt	
.200	.20	.14	.031	grams	
5.08	5.08	3.56	0.79	5.2	

Features

- excellent conversion loss, 5.85 dB typ.
- high L-R isolation, 45 dB typ. L-I isolation, 40 dB typ.
- rugged welded construction
- hermetic

Applications

- VHF/UHF
- defense & federal communications
- instrumentation

Electrical Specifications

FREQUENCY (MHz)		CONVERSION LOSS (dB)				LO-RF ISOLATION (dB)						LO-IF ISOLATION (dB)					
LO/RF f_L - f_U	IF	Mid-Band m		Total Range Max.	Total Range Max.	L		M		U		L		M		U	
		\bar{X}	σ			Typ.	Min.	Typ.	Min.	Typ.	Min.	Typ.	Min.	Typ.	Min.	Typ.	Min.
1-750	DC-750	5.85	.11	7.5	8.5	50	40	45	25	35	25	45	35	40	30	30	20

1 dB COMP.: +10 dBm typ.

L = low range [f_L to $10 f_L$]

m = mid band [$2f_L$ to $f_U/2$]

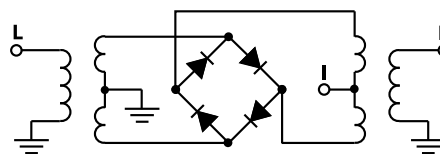
M = mid range [$10 f_L$ to $f_U/2$]

U = upper range [$f_U/2$ to f_U]

Typical Performance Data

Frequency (MHz)		Conversion Loss (dB)	Isolation L-R (dB)	Isolation L-I (dB)	VSWR RF Port (:1)	VSWR LO Port (:1)
RF	LO	LO +17dBm	LO +17dBm	LO +17dBm	LO +17dBm	LO +17dBm
1.00	31.00	6.91	59.17	55.91	1.21	2.46
5.00	35.00	6.06	55.98	51.59	1.10	2.36
20.00	50.00	5.98	56.29	51.86	1.05	2.36
50.00	80.00	5.98	56.10	51.57	1.04	2.38
75.90	45.90	5.94	55.67	51.09	1.05	2.39
100.87	70.87	5.88	54.02	49.21	1.07	2.27
150.80	120.80	5.94	48.90	45.61	1.08	2.23
225.70	195.70	6.05	44.92	42.84	1.10	2.29
250.67	220.67	5.93	43.34	41.39	1.13	2.30
275.64	245.64	5.92	41.46	40.34	1.17	2.32
350.54	320.54	6.22	40.96	39.92	1.21	2.29
400.47	370.47	6.34	38.85	39.12	1.22	2.23
450.41	420.41	6.25	35.90	35.56	1.24	2.34
500.00	470.00	6.34	35.92	33.02	1.23	2.35
525.31	495.31	6.71	36.74	33.42	1.23	2.37
575.24	545.24	7.06	37.19	34.02	1.23	2.38
625.18	595.18	6.59	37.15	33.53	1.27	2.33
675.11	645.11	6.45	35.08	31.94	1.37	2.38
725.04	695.04	6.86	34.11	30.41	1.54	2.36
750.00	720.00	6.96	34.12	26.97	1.78	2.28

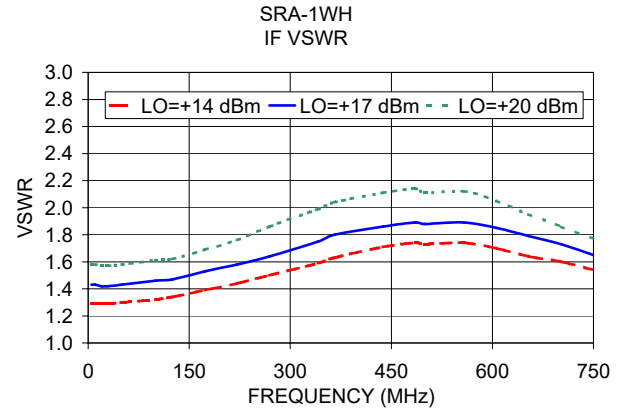
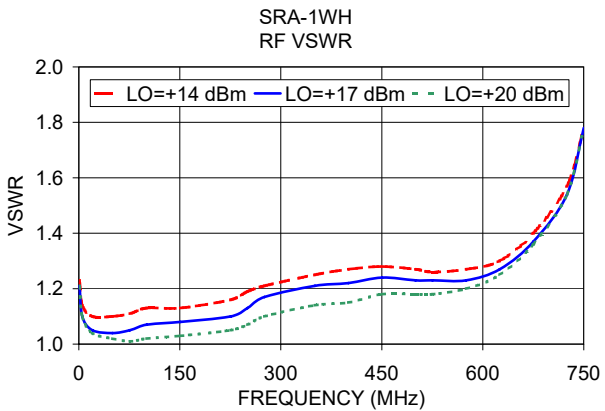
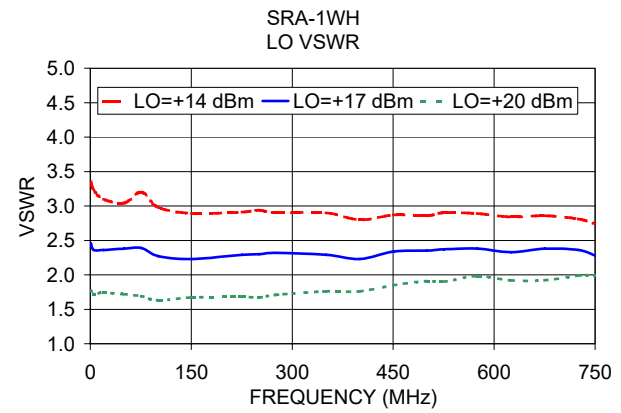
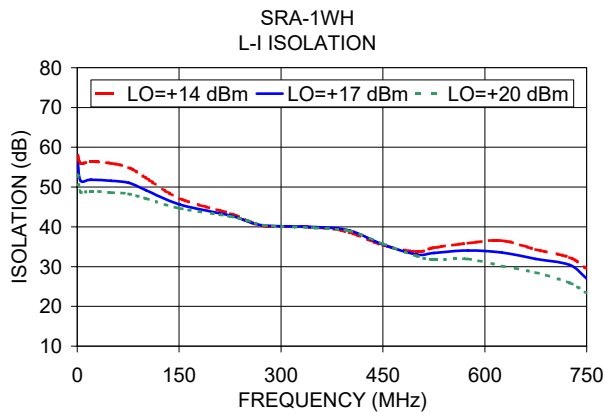
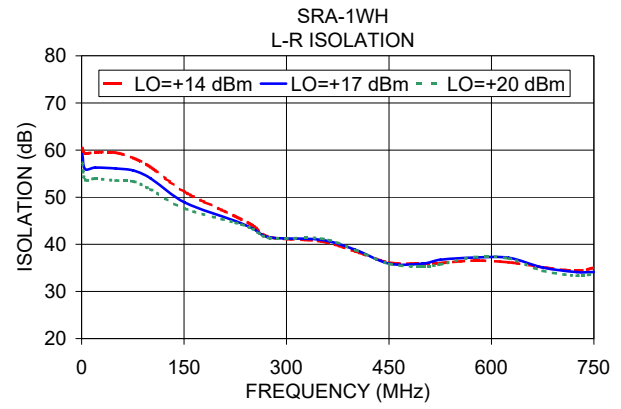
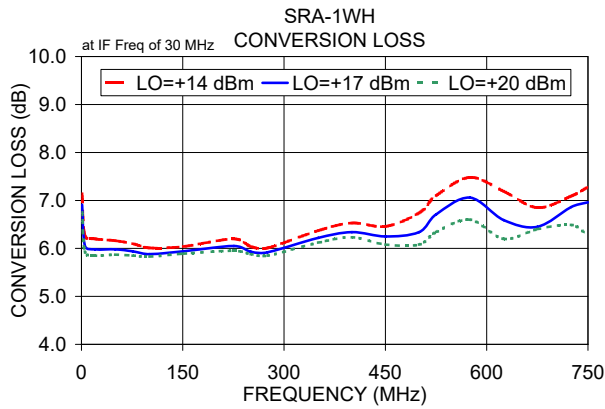
Electrical Schematic



Notes

- Performance and quality attributes and conditions not expressly stated in this specification document are intended to be excluded and do not form a part of this specification document.
- Electrical specifications and performance data contained in this specification document are based on Mini-Circuit's applicable established test performance criteria and measurement instructions.
- The parts covered by this specification document are subject to Mini-Circuits standard limited warranty and terms and conditions (collectively, "Standard Terms"); Purchasers of this part are entitled to the rights and benefits contained therein. For a full statement of the Standard Terms and the exclusive rights and remedies thereunder, please visit Mini-Circuits' website at www.minicircuits.com/MCLStore/terms.jsp





Notes

- A. Performance and quality attributes and conditions not expressly stated in this specification document are intended to be excluded and do not form a part of this specification document.
- B. Electrical specifications and performance data contained in this specification document are based on Mini-Circuit's applicable established test performance criteria and measurement instructions.
- C. The parts covered by this specification document are subject to Mini-Circuits standard limited warranty and terms and conditions (collectively, "Standard Terms"); Purchasers of this part are entitled to the rights and benefits contained therein. For a full statement of the Standard Terms and the exclusive rights and remedies thereunder, please visit Mini-Circuits' website at www.minicircuits.com/MCLStore/terms.jsp

