

MPB19 Series

19mm Metal Pushbutton Switches



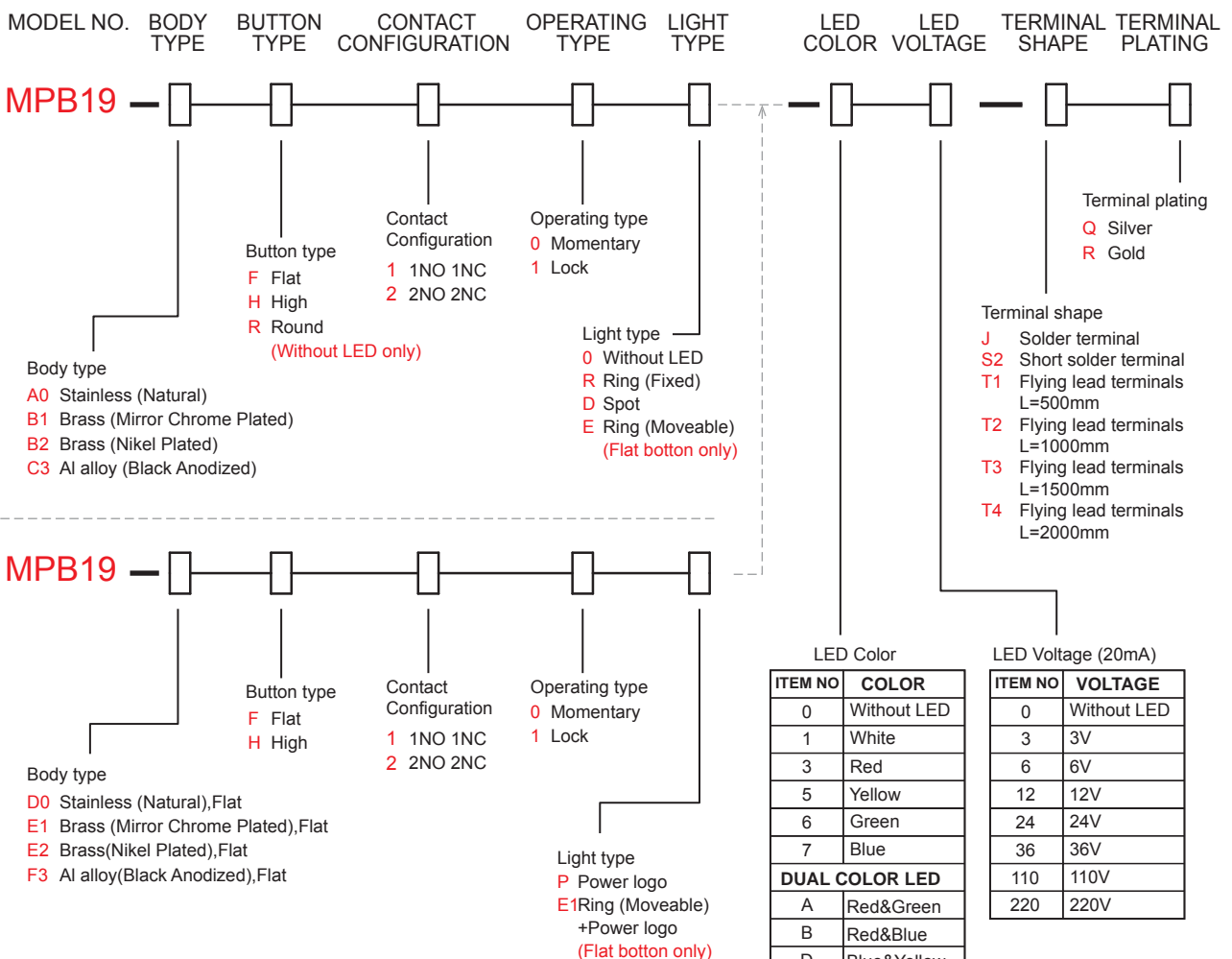
SPECIFICATIONS

RATING : 1th 5A/250VAC resistive load 3A/250VAC
CONTACT RESISTANCE : 50 mΩ max. @ 1A 12VDC (initial value)
INSULATION RESISTANCE : 1,000 MΩ min. at 500VDC
DIELECTRIC STRENGTH : 2,000V RMS @ sea level
OPERATION TEMPERATURE : -20°C to 55°C
MECHANICAL LIFE : Momentary 1,000,000 cycles
 Self-lock 500,000 cycles
ELECTRICAL LIFE : 50,000 make-and-break cycles at full load
TORQUE : 5~14Nm
PANEL THICKNESS : 10mm (Ø19.20mm)
OPERATION PRESSURE : 1Pole 2.5±1N / 2Poles 3.5±1N
TRAVEL : About 3.2mm
INGRESS PROTECTION : IP67, IK10(Stainless)

MATERIALS

BUSHING : Stainless Steel / Nickel plated brass
 / Aluminum alloy
BASE : PBT(UL 94-V0) , PC(UL 94-V2)
ACTUATOR : PC(UL 94-V2) ; Stainless Steel
 / Nickel plated brass / Aluminum alloy
INNER ASSEMBLY : POM / PA66.
SPRING : Spring steel.
SEALING : Silicone.
O-Ring : Silicone.
TERMINAL / CONTACT : Copper ,Silver plated.
HEX NUT : Nickel plated brass.

HOW TO ORDER



EXAMPLE:
 MPB19-A0F100-JQ (Without LED)
 MPB19-A0F10R-□□-JQ
 LED color □ □ LED voltage

MPB19 Series

19mm Metal Pushbutton Switches

CIRCUIT

POSITION 1

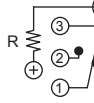


Without LED (1 Pole)

POSITION 2

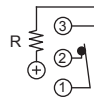


POSITION 1

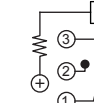


Single Color Led (1 Pole)

POSITION 2

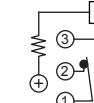


POSITION 1

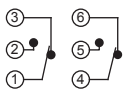


Dua Color Led (1 Pole)

POSITION 2

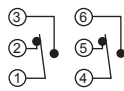


POSITION 1



Without LED (2 Poles)

POSITION 2



POSITION 1



Single Color Led (2 Poles)

POSITION 2



POSITION 1



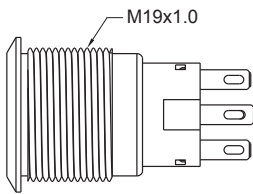
Dua Color Led (2 Poles)

POSITION 2

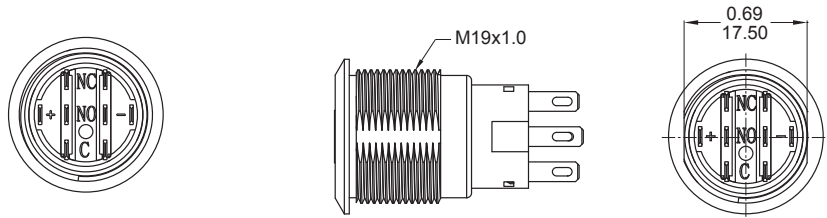


BODY TYPE

A0/B1/B2/C3 Body

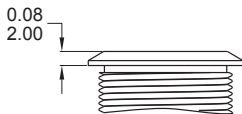


D0/E1/E2/F3 Body (Flat)

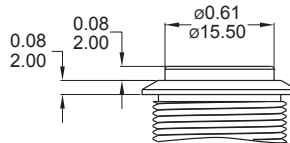


BUTTON TYPE

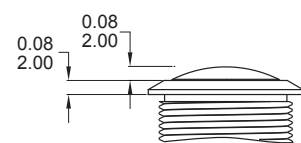
F Flat Button



H High Button

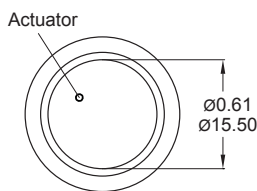


R Round Button

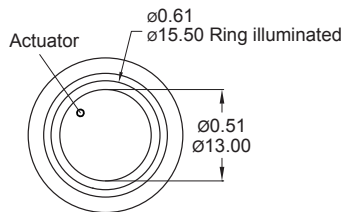


LIGHT TYPE

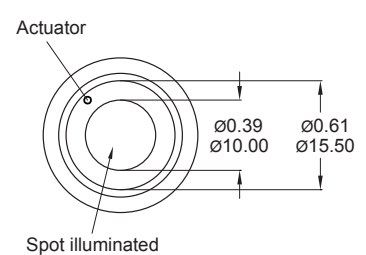
0 Without LED



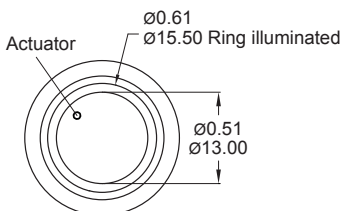
R Ring (Fixed)



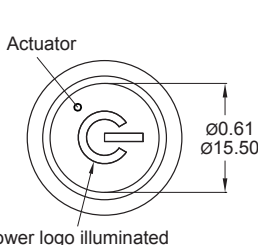
D Spot



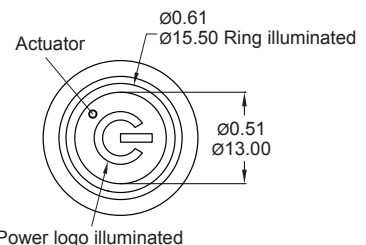
E Ring (Moveable)



P Power logo



E1 Ring (Moveable)+Power logo



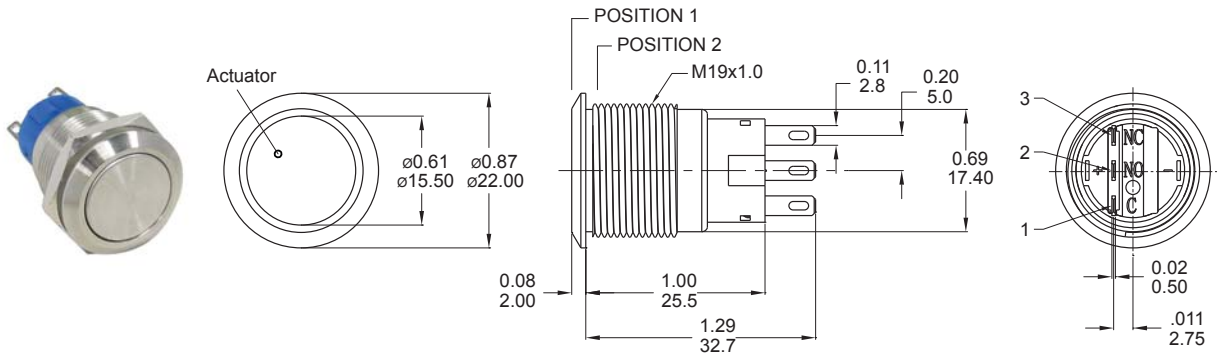
* Only for A0,B1,B2,C3 body.

* Only for D0,E1,E2,F3 body.

* E1 light type only for D0,E1,E2,F3 body.

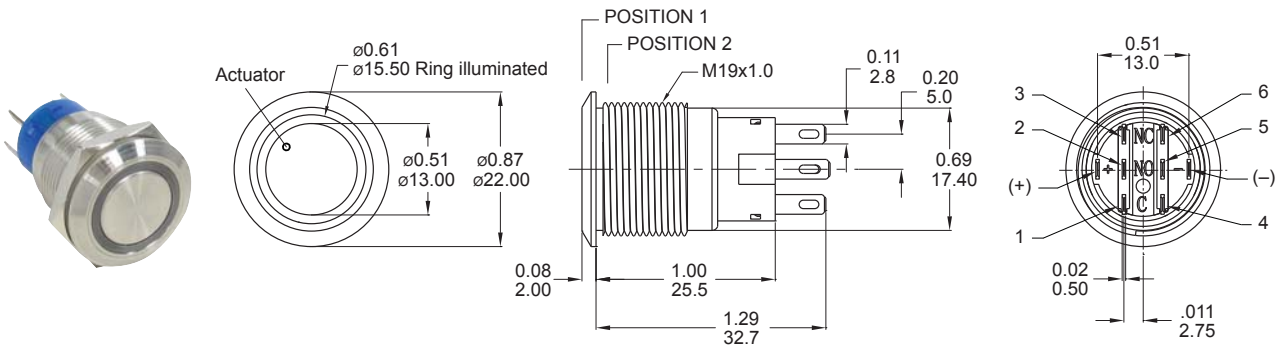
FLAT BUTTON TYPE

0 Without LED



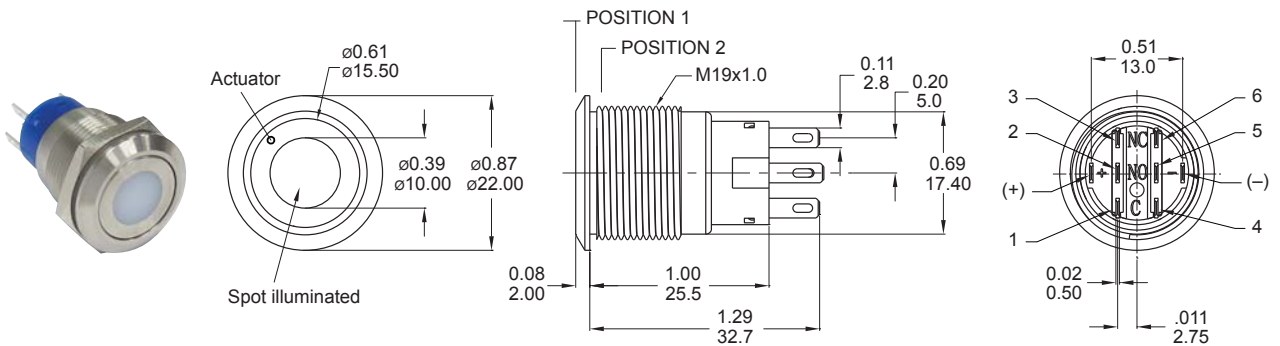
Part No. Shown : MPB19-A0F1□0-JQ

R Ring (Fixed)



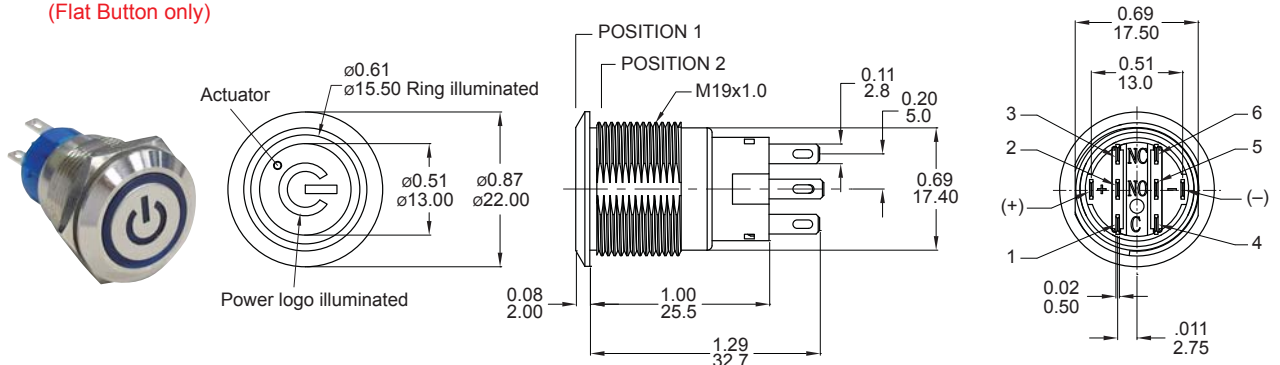
Part No. Shown : MPB19-A0F2□R-□□-JQ

D Spot



Part No. Shown : MPB19-A0F2□D-□□-JQ

E1 Ring (Moveable)+Power logo
(Flat Button only)



Part No. Shown : MPB19-D0F2□E1-□□-JQ

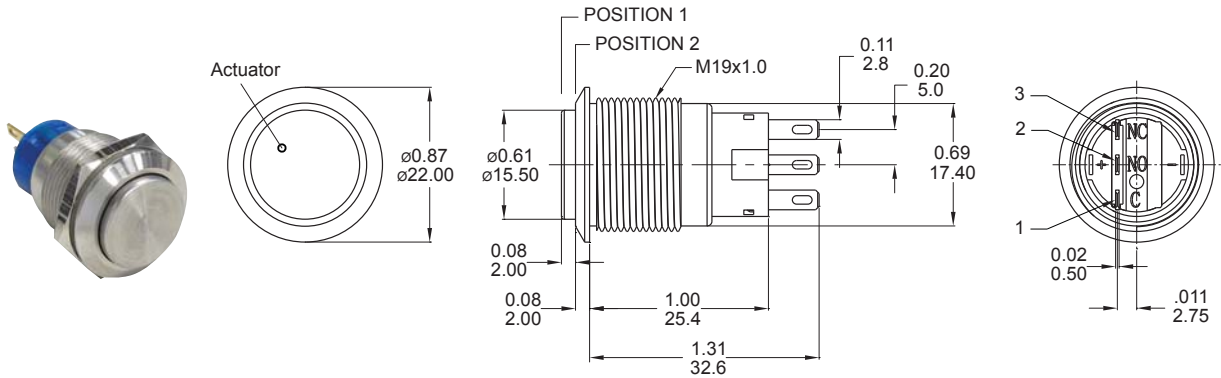


MPB19 Series

19mm Metal Pushbutton Switches

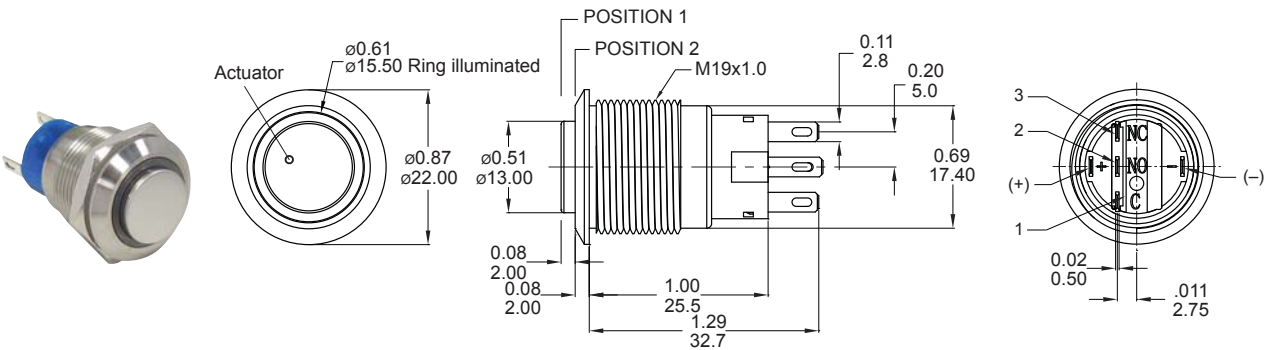
HIGH BUTTON TYPE

0 Without LED



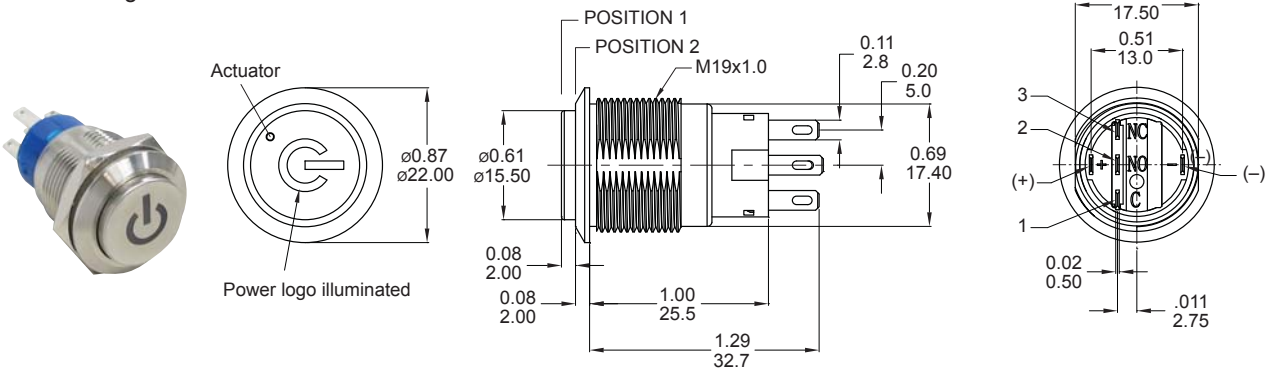
Part No. Shown : MPB19-A0H1□0-JQ

R Ring (Fixed)



Part No. Shown : MPB19-A0H1□R-□□-JQ

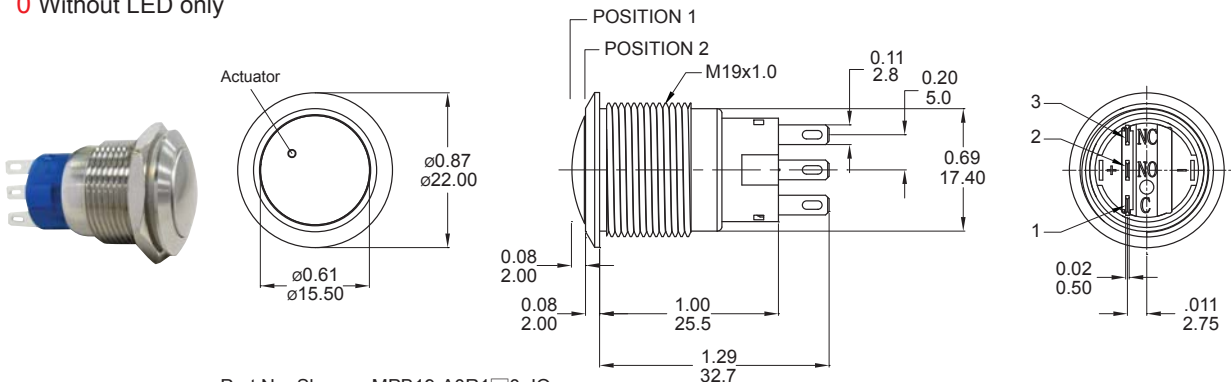
P Power logo



Part No. Shown : MPB19-D0H1□P-□□-JQ

ROUND BUTTON TYPE

0 Without LED only

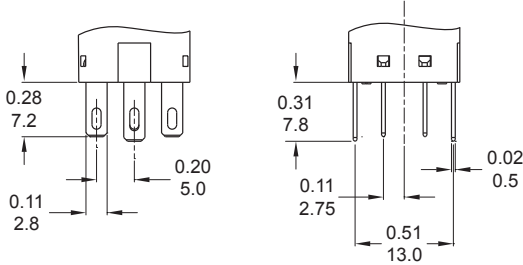


Part No. Shown : MPB19-A0R1□0-JQ

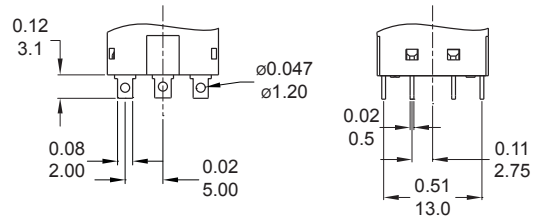
MPB19 Pushbutton Switches

TERMINAL TYPE

J Solder terminal (std)

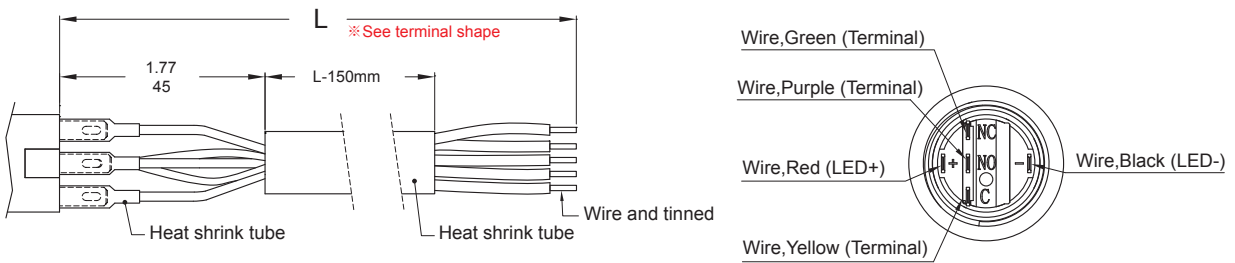


S2 Short solder terminal



Wire (Flying lead Terminals)

※ Wire=UL 3385, 18AWG, 300V (Black/Yellow/Green/Red/Purple)

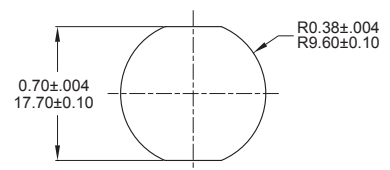
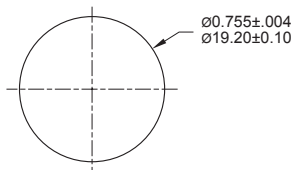


O/R/D/E Light Type

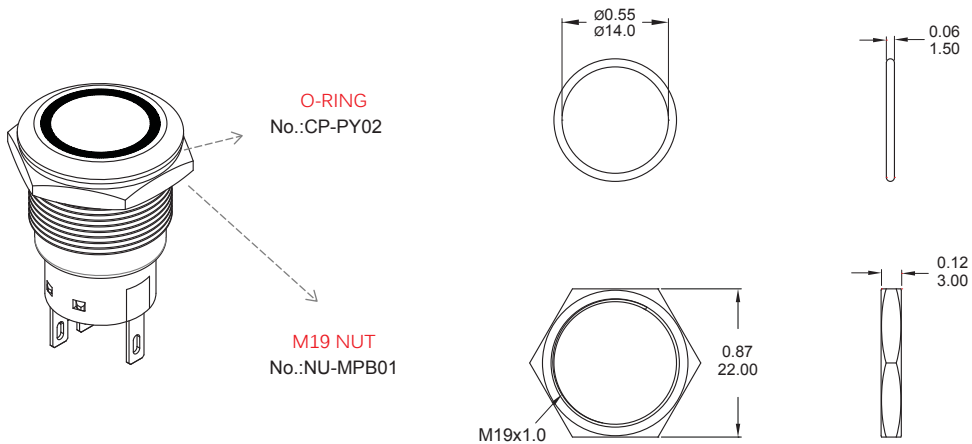
P Light Type

PANEL MOUNTING

Max. Panel thickness: 10.0mm[0.39]



ASSEMBLED VIEW



O-RING INSTALLATION

Proposal	In front of the panel	Behind the panel
Installation Diagram		



MPB19
Pushbutton Switches