



## SPECIFICATIONS

**RATING** : 2A/36VDC  
**ELECTRICAL LIFE** : 200,000 make-and-break cycles at full load  
**MECHANICAL LIFE** : 1,000,000 cycles  
**INSULATION RESISTANCE** : 1,000 MΩ min. at 500VDC  
**DIELECTRIC STRENGTH** : 2,000V RMS @ sea level  
**CONTACT RESISTANCE** : 50 mΩ max.  
**OPERATION TEMPERATURE** : -20°C~+70°C  
**TRAVEL**: About 2.0±0.20mm  
**OPERATION PRESSURE** : 4.5N±1.5N  
**INGRESS PROTECTION** : IP67  
**TORQUE** : 11.5 kgf · cm  
**THICKNESS** : 8.0mm (Max.)  
**Current limiting resistor is required to limit LED forward current to 20mA.**

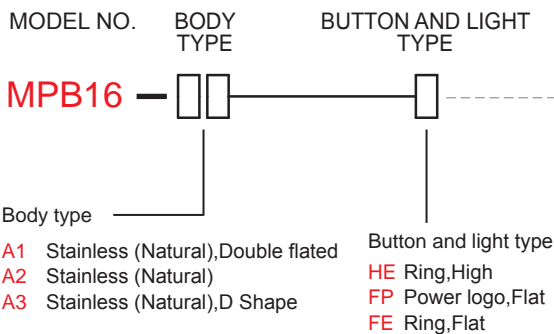
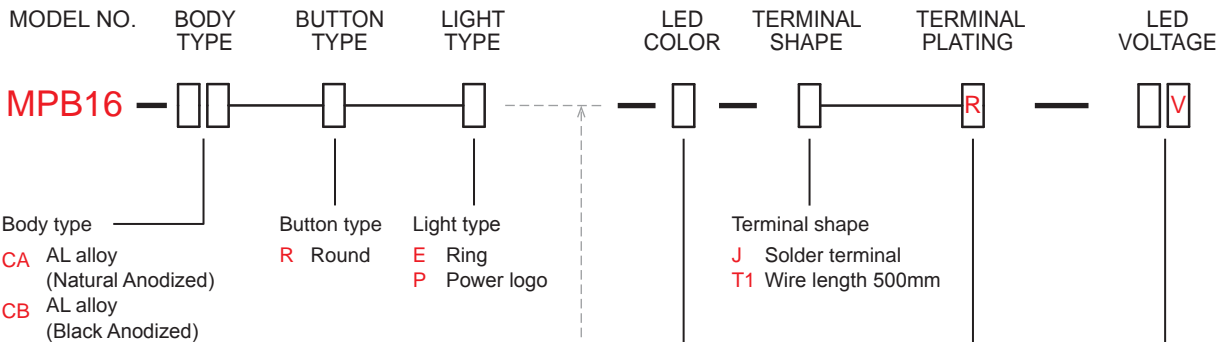
## MATERIALS

**BUSHING** : Aluminum alloy / Stainless Steel  
**BASE** : PBT (UL 94-V0)  
**ACTUATOR** : PC (Translucent UL 94-V2)  
**CAP** : Aluminum alloy / Stainless Steel  
**SPRING** : Steel.  
**SEALING** : Silicone (Translucent).  
**O-Ring** : Silicone (Translucent).  
**TERMINAL** : Brass ,Gold plated.  
**CONTACT** : Silver alloy.  
**HEX NUT** : Brass (Nickel plated).

MPB16 Pushbutton Switches

## HOW TO ORDER

IP 67  
 ACCORDING TO  
 EN 60529:1991+A1:2001  
 IEC 60529:2001



ITEM NO	COLOR
0	Without LED
1	White
3	Red
5	Yellow
6	Green
7	Blue
DUAL COLOR LED	
A	Red&Green
RGB COLOR LED	
RGB	RGB

Resistance (About LED Voltage)	
0	Without Resistance
3V	LED input 3 VDC, 47Ω * Red/Yellow led type only
6V	LED input 6 VD, 180Ω
12V	LED input 12 VDC, 470Ω
24V	LED input 24 VDC, 1000Ω

※ ohms value of resistance tolerance: ±5%

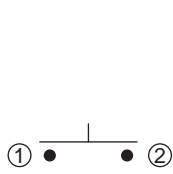
EXAMPLE:  
 MPB16-CARE-0-JR-0 (Without LED)  
 MPB16-CARE- [ ] -JR- [ ] V  
 LED color LED voltage

# MPB16 Series

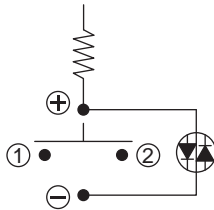
16mm Metal Pushbutton Switches

## CIRCUIT

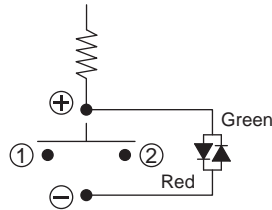
※ According to the input voltage adjustment resistance



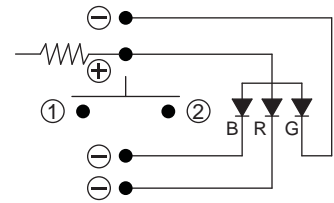
Without Led



Single Color Led



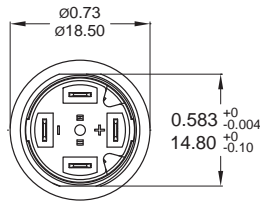
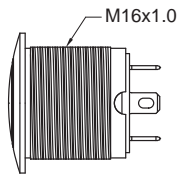
Dual Color Led



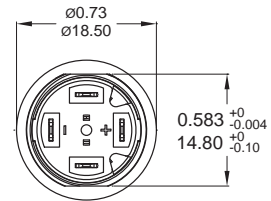
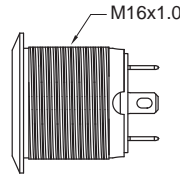
RGB Color Led

## BODY TYPE

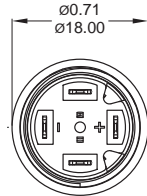
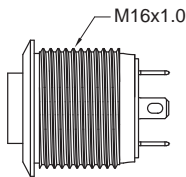
CA/CB Aluminum alloy



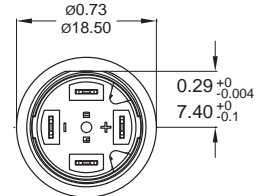
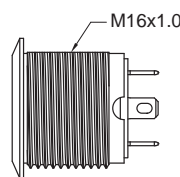
A1 Stainless Steel



A2 Stainless Steel

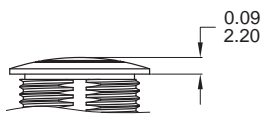


A3 Stainless Steel (D Shape)

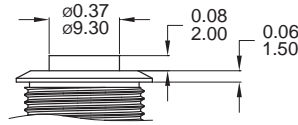


## BUTTON TYPE

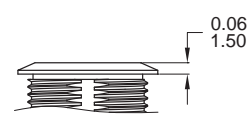
R Round Button



H High Button

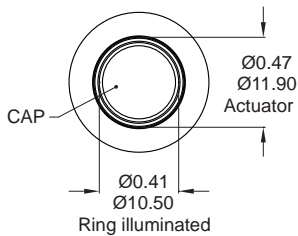


F Flat Button

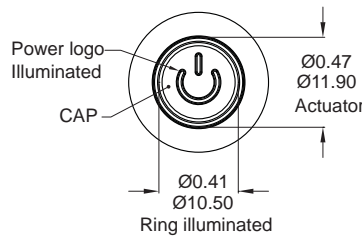


## LIGHT TYPE

E Ring, Round



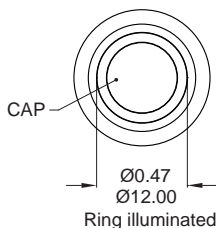
P Power logo, Round



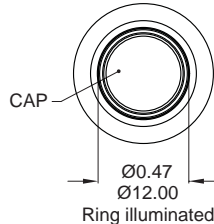
\* E,P light type only for CA,CB body.

\* HE,FE,FP light type only for A1,A2,A3 body.

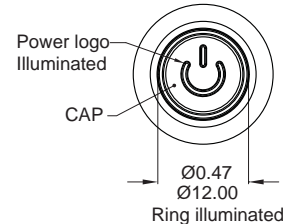
HE Ring, High



FE Ring, Flat

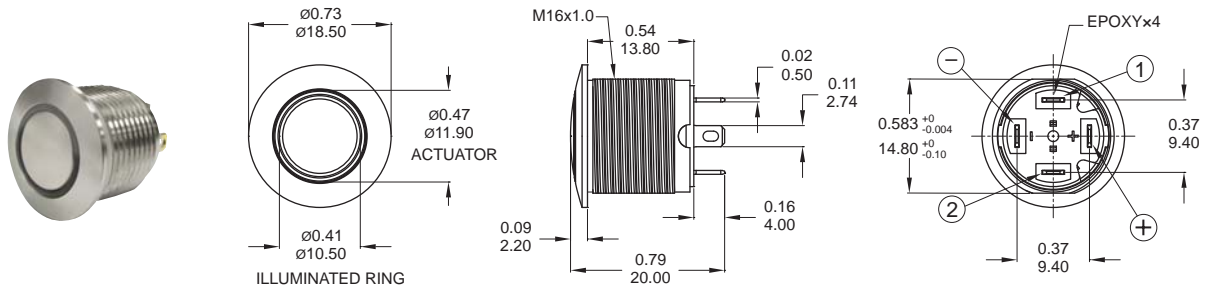


FP Power logo, Flat



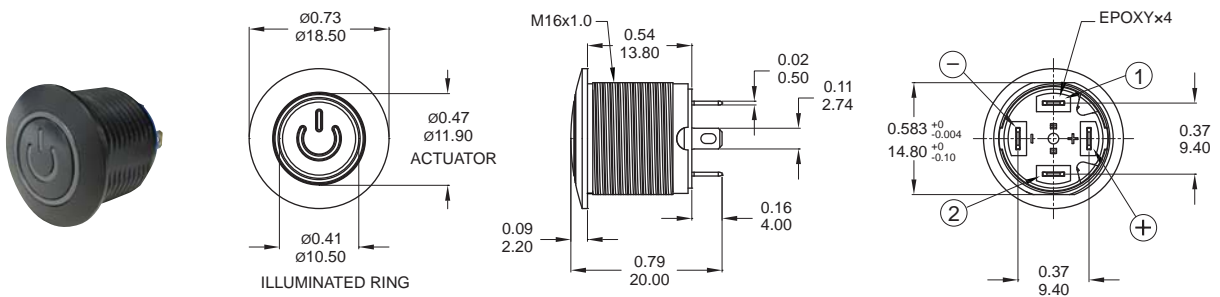
## DIMENSION

### E Ring



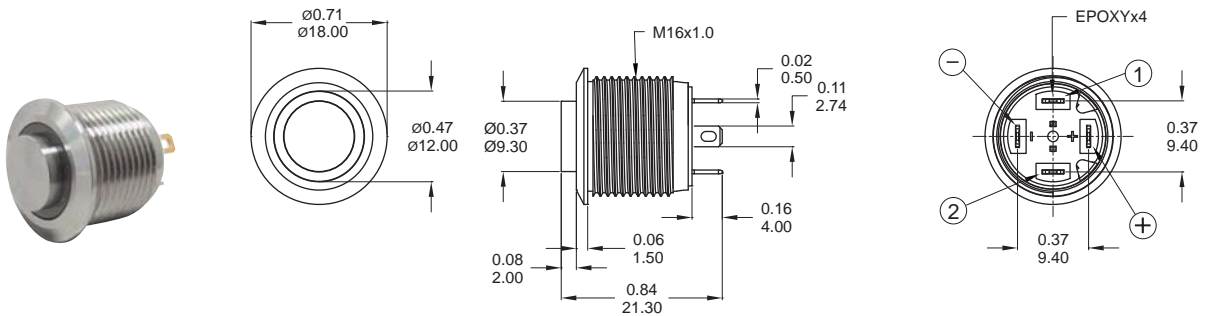
Part No. Shown : MPB16-CARE-□-JR-0V

### P Power logo



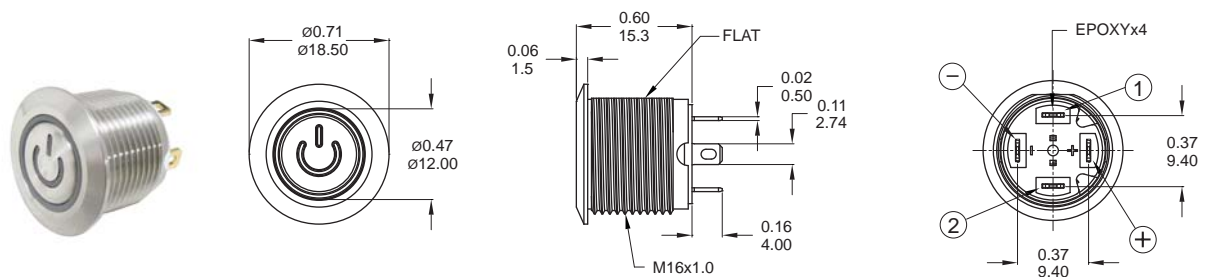
Part No. Shown : MPB16-CBRP-□-JR-0V

### HE Ring



Part No. Shown : MPB16-A2HE-□-JR-0V

### FP Power logo



Part No. Shown : MPB16-A3FP-□-JR-0V

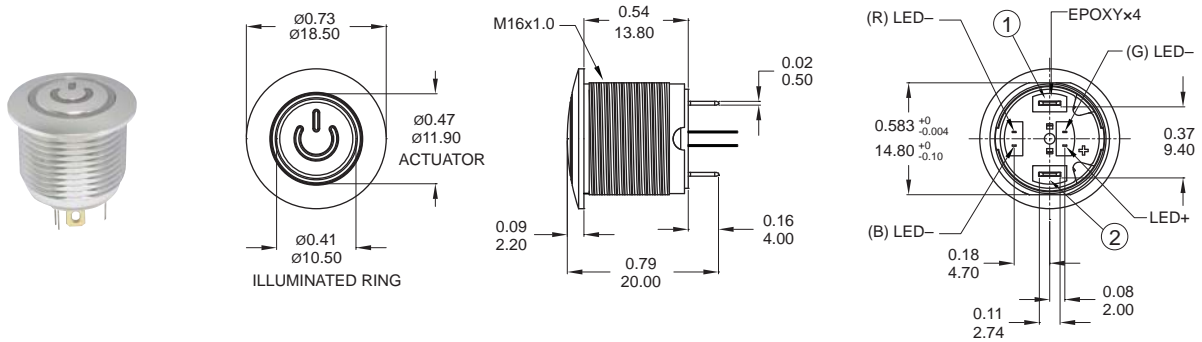


# MPB16 Series

16mm Metal Pushbutton Switches

## DIMENSION

### E Ring

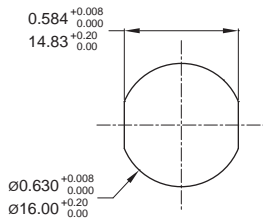


Part No. Shown : MPB16-CARE-RGB-JR-0V

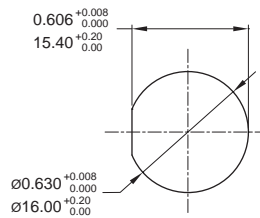
## PANEL CUTOUT / HARDWARE

### PANEL CUTOUT

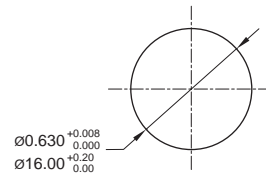
CA/CB/A1 Type



A3 Type

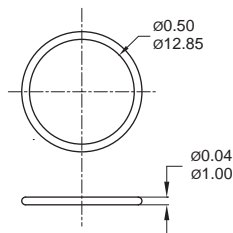


A2 Type

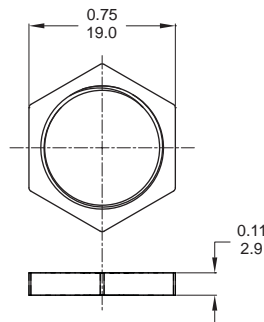


### HARDWARE

O-RING



M16 NUT



T1 ※ Wire=Multi-wire lead AWG20, section 0.6mm<sup>2</sup>, UL approved (Black / Red / Green)

